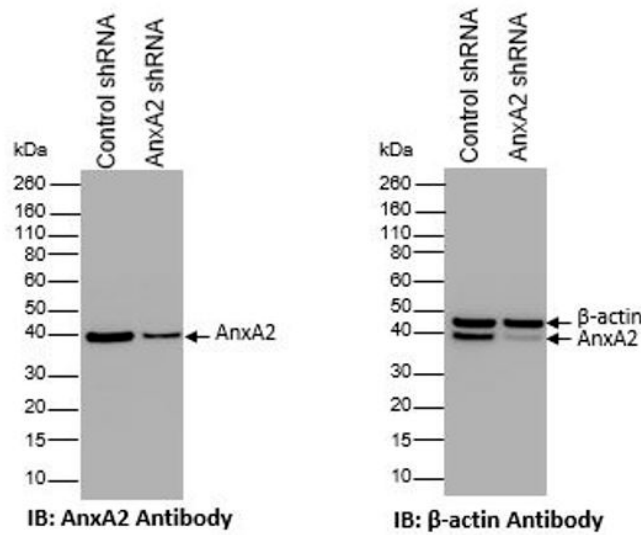
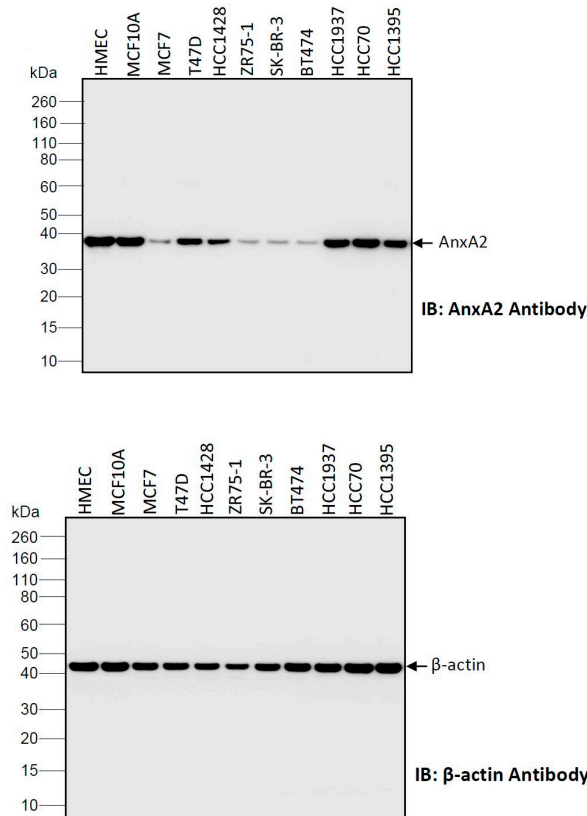


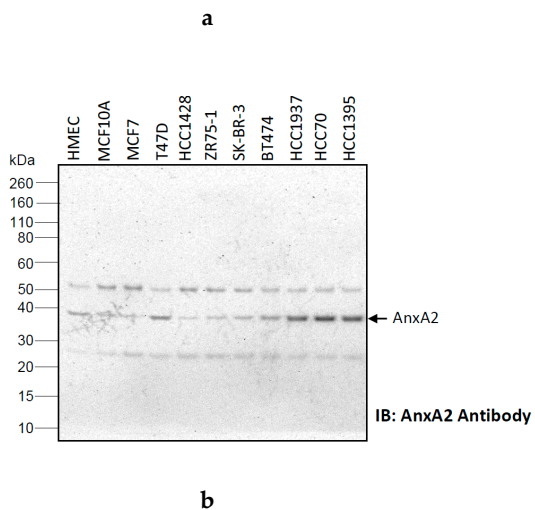
# Supplementary Material: Clinical Significance of Annexin A2 Expression in Breast Cancer Patients

Lee D. Gibbs, Kelsey Mansheim, Sayantan Maji, Rajesh Nandy, Cheryl M. Lewis, Jamboor K. Vishwanatha and Pankaj Chaudhary

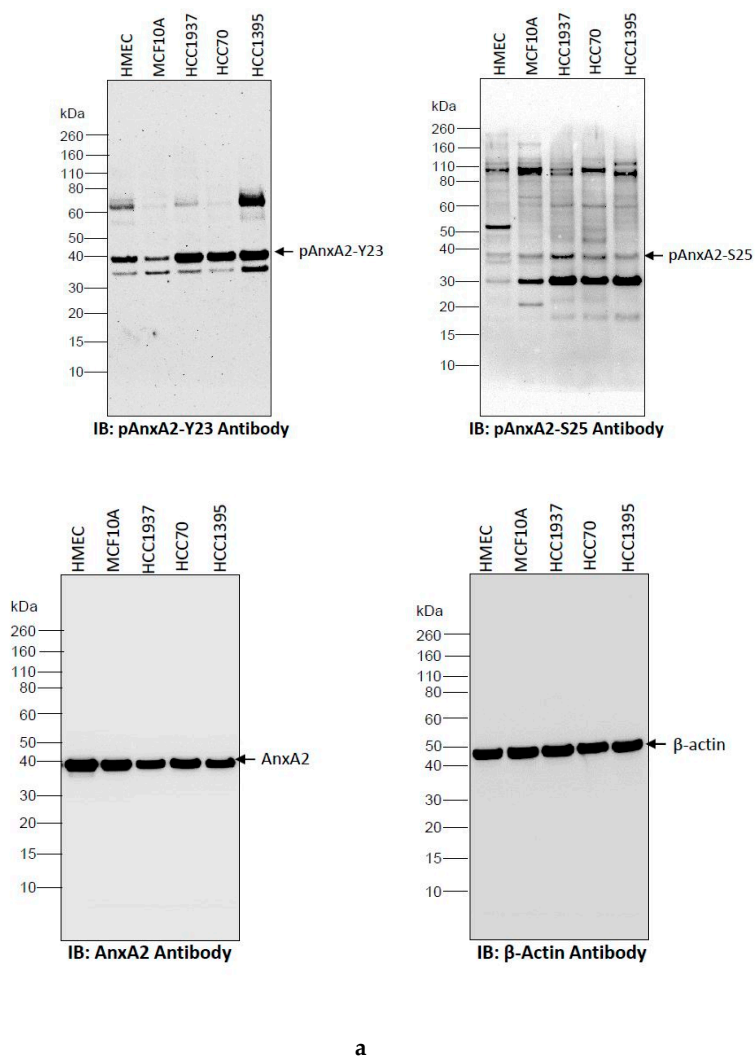


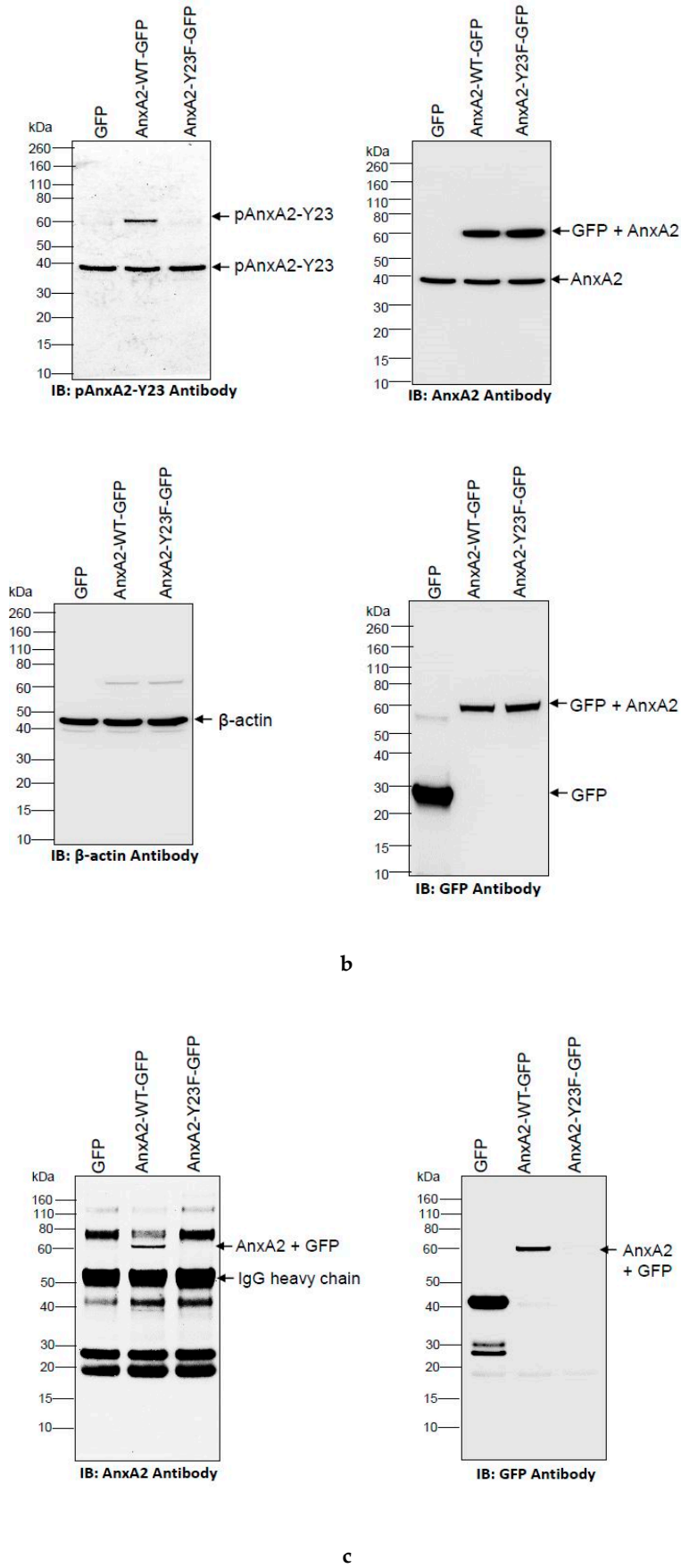
**Figure S1.** MDA-MB-231 cells were transfected with ANXA2 shRNA or control shRNA (Horizon Discovery, Cambridge, UK). After transfection, the expression of AnxA2 was determined by immunoblot analysis.





**Figure S2.** Uncropped Western Blots of Figure 4 (A) and (C). (a) immunoblot of Subfigure (A) and (b) immunoblot of subfigure (C).





**Figure S3.** Uncropped Western Blots of Figure 5 (A), (C) and (D). (a) immunoblot of Subfigure (A). (b) immunoblot of Subfigure (C) and (c) immunoblot of Subfigure (D).

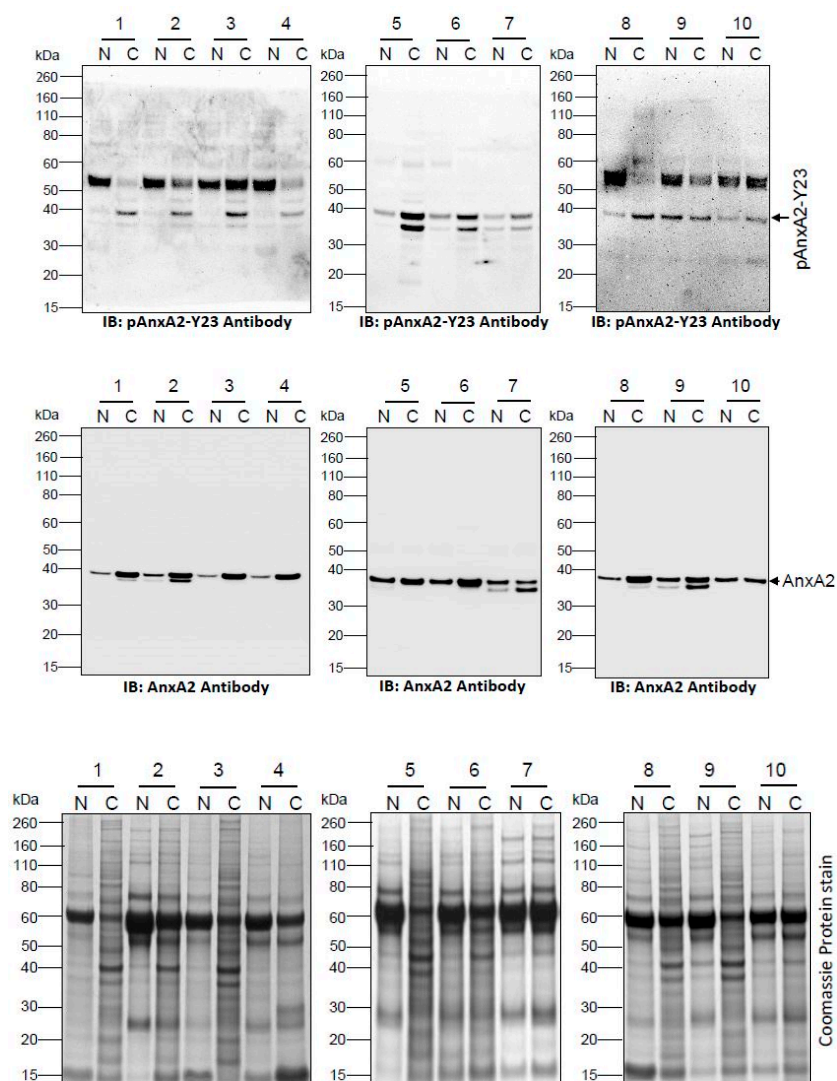


Figure S4. Uncropped Western Blots of Figure 6 (A).

**Publisher’s Note:** MDPI stays neutral with regard to jurisdictional claims in published maps and institutional affiliations.



© 2020 by the authors. Licensee MDPI, Basel, Switzerland. This article is an open access article distributed under the terms and conditions of the Creative Commons Attribution (CC BY) license (<http://creativecommons.org/licenses/by/4.0/>).