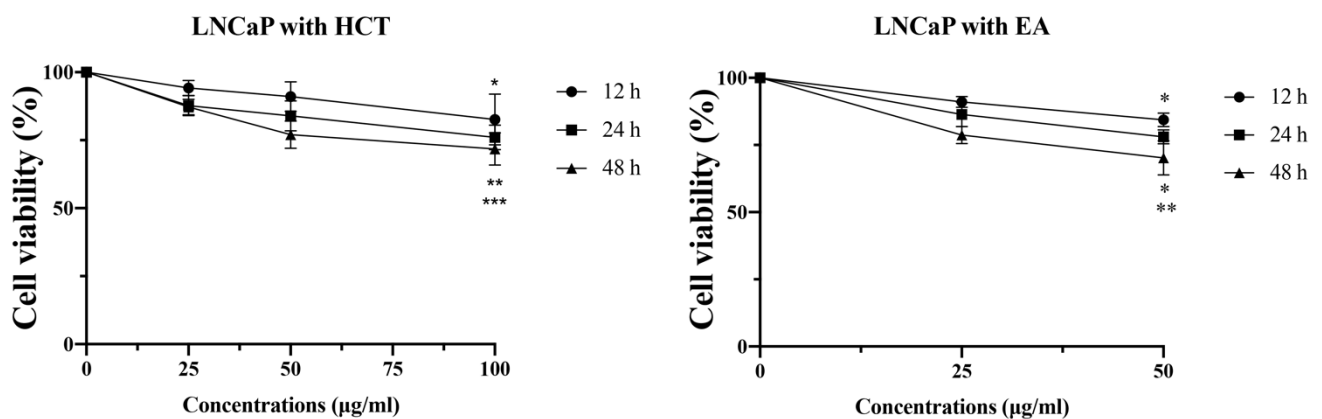
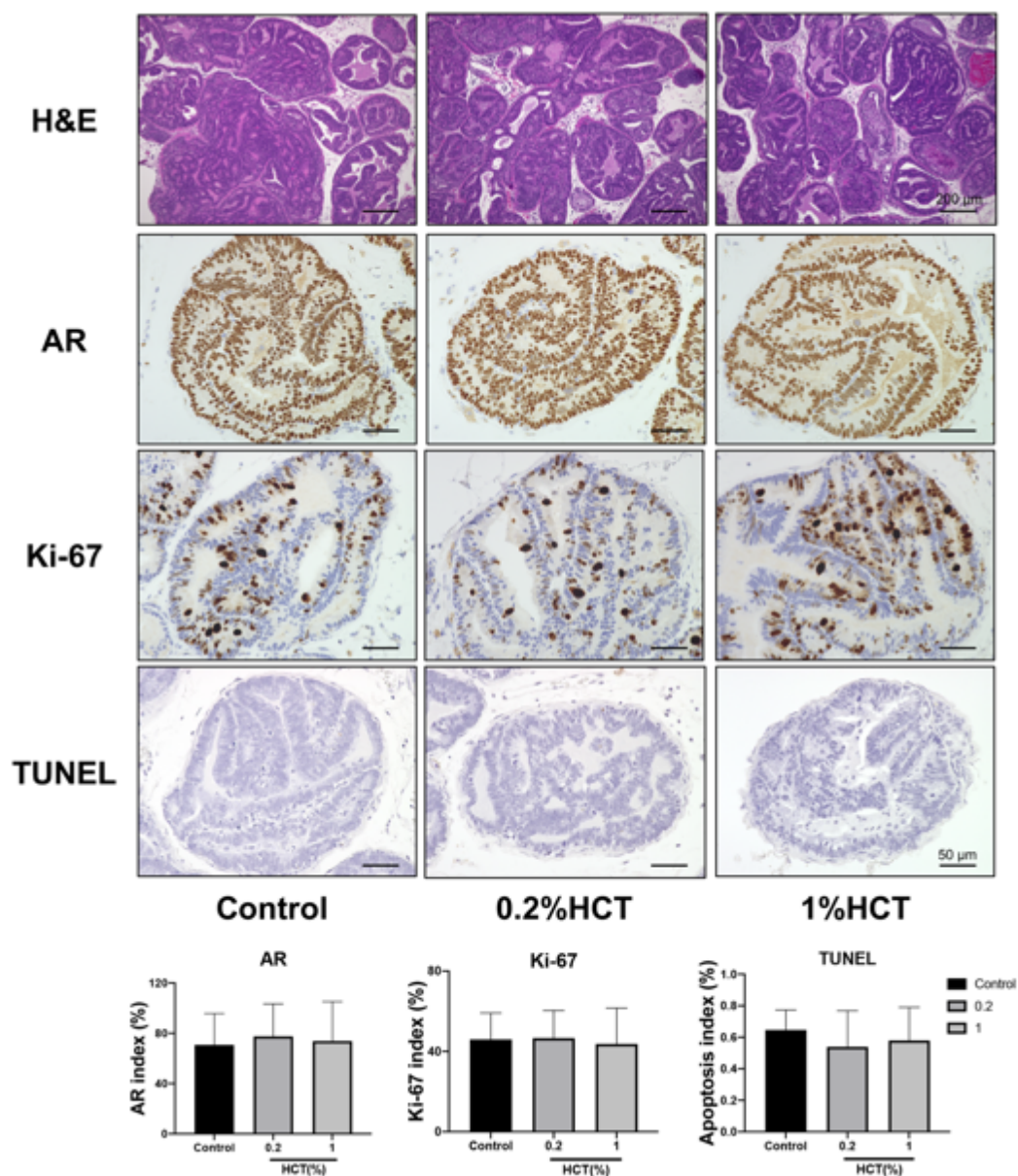


Supplementary Materials

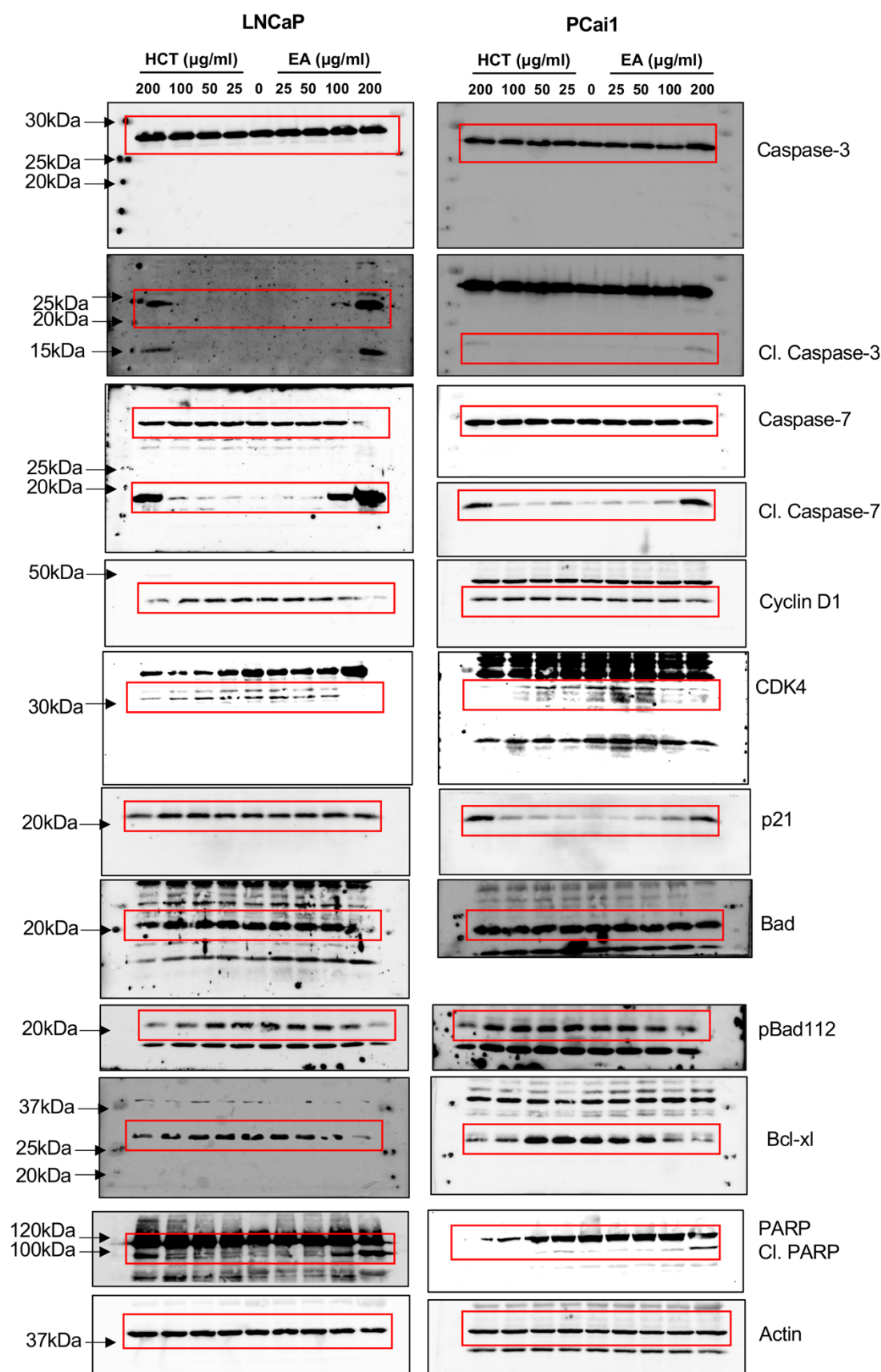
# Suppressive effect and molecular mechanism of *Houttuynia cordata* Thunb. extract against prostate carcinogenesis and castration-resistant prostate cancer



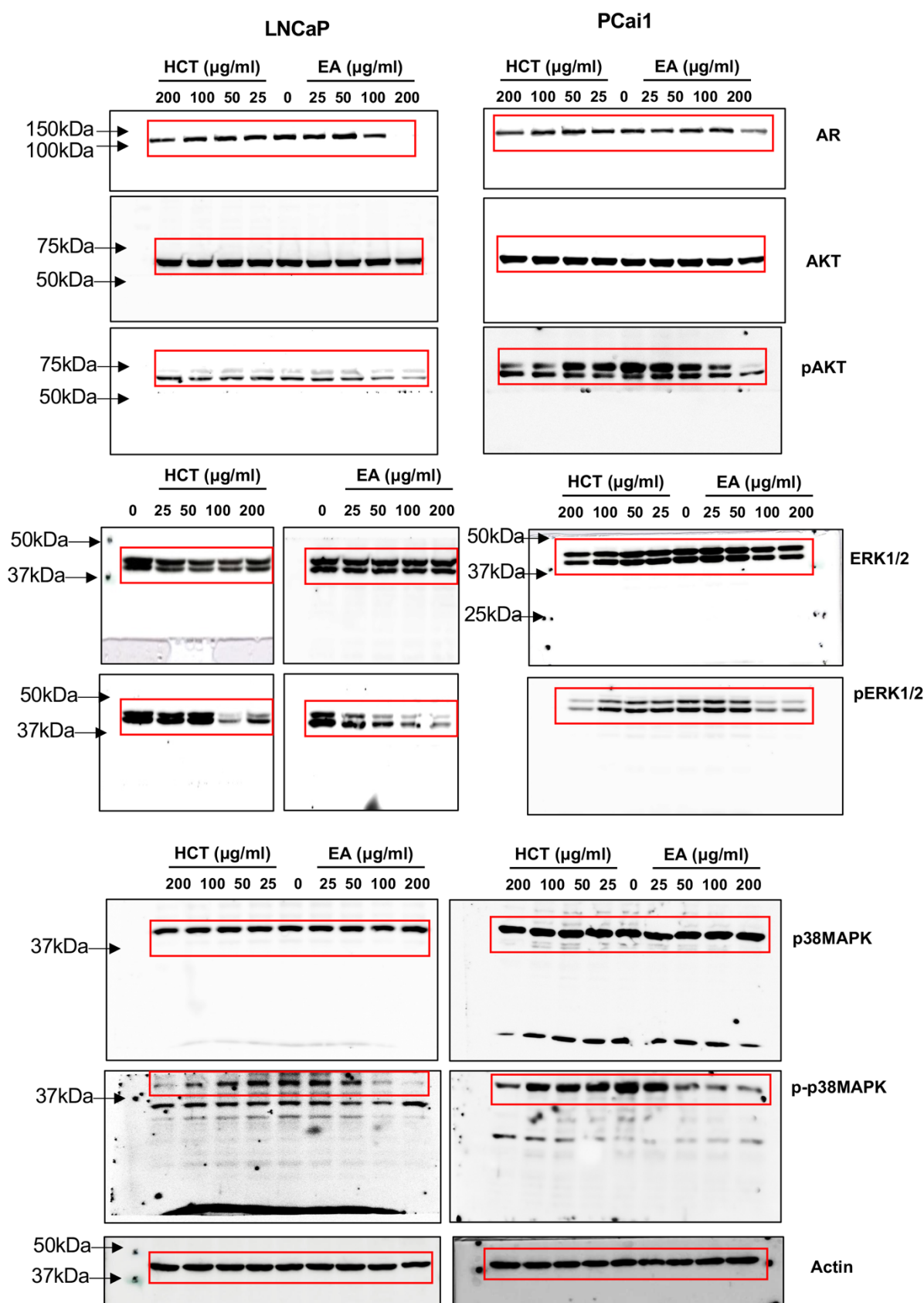
**Supplementary Figure S1.** Cytotoxic effects of HCT and EA in LNCaP cells in serum-free condition. LNCaP were treated with HCT (25–100 µg/mL) or EA (25–50 µg/mL) in incomplete media at 12, 24 and 48 h. The data represent 3 independent experiments. \* $p < 0.05$ ; \*\* $p < 0.01$ ; \*\*\* $p < 0.001$  vs. control (one-way ANOVA with Tukey's post hoc test)



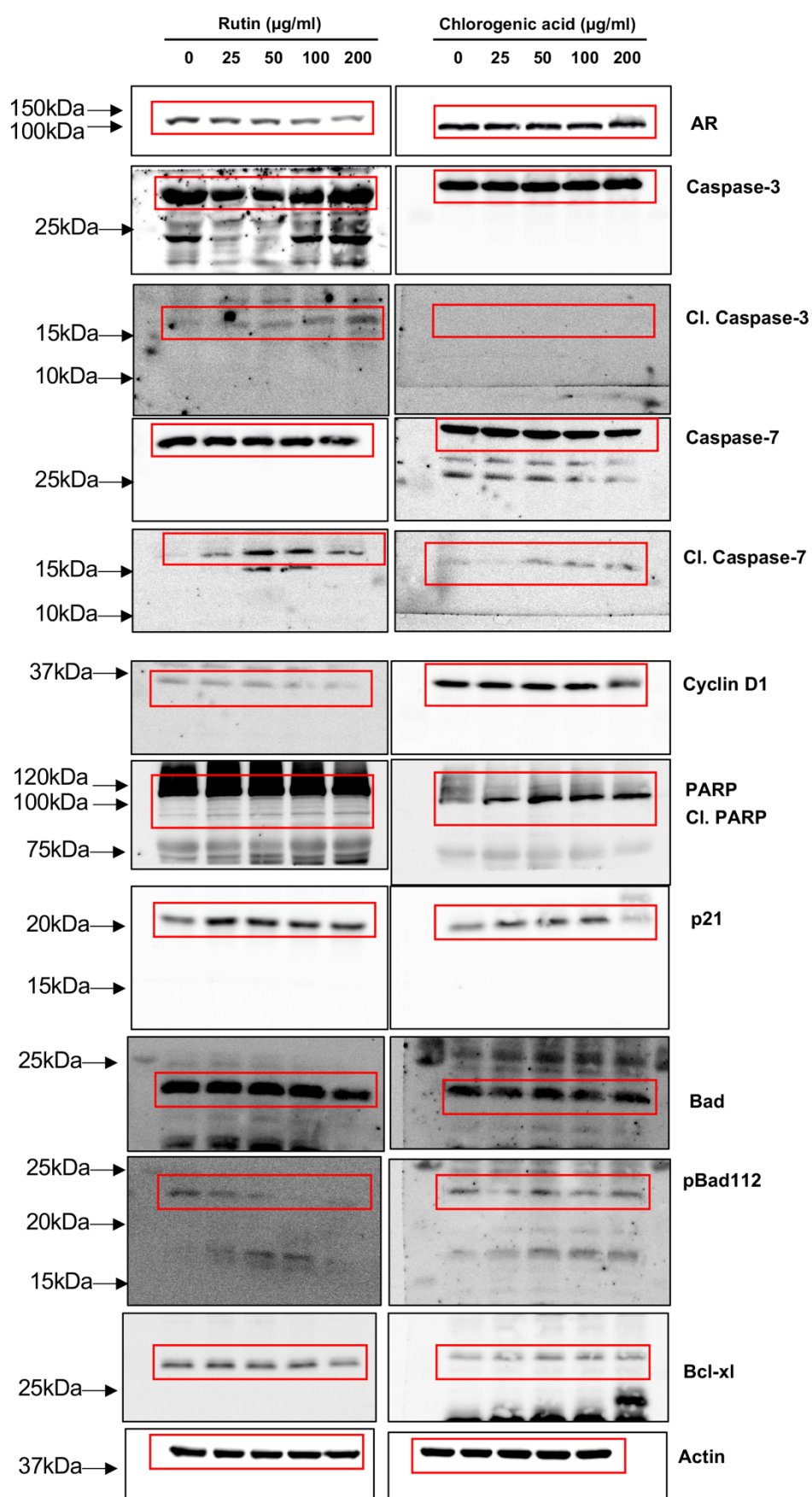
**Supplementary Figure S2.** Representative images of H&E staining, immunohistochemistry of androgen receptor (AR), Ki-67 and terminal deoxynucleotidyl transferase dUTP nick end labeling (TUNEL) assay in high grade prostatic intraepithelial neoplasia in prostates ventral lobe.



**Supplementary Figure S3.** Whole un-cropped images of the original western blots showing all bands with molecular weight markers. These gels correspond to those shown in Figure 3D

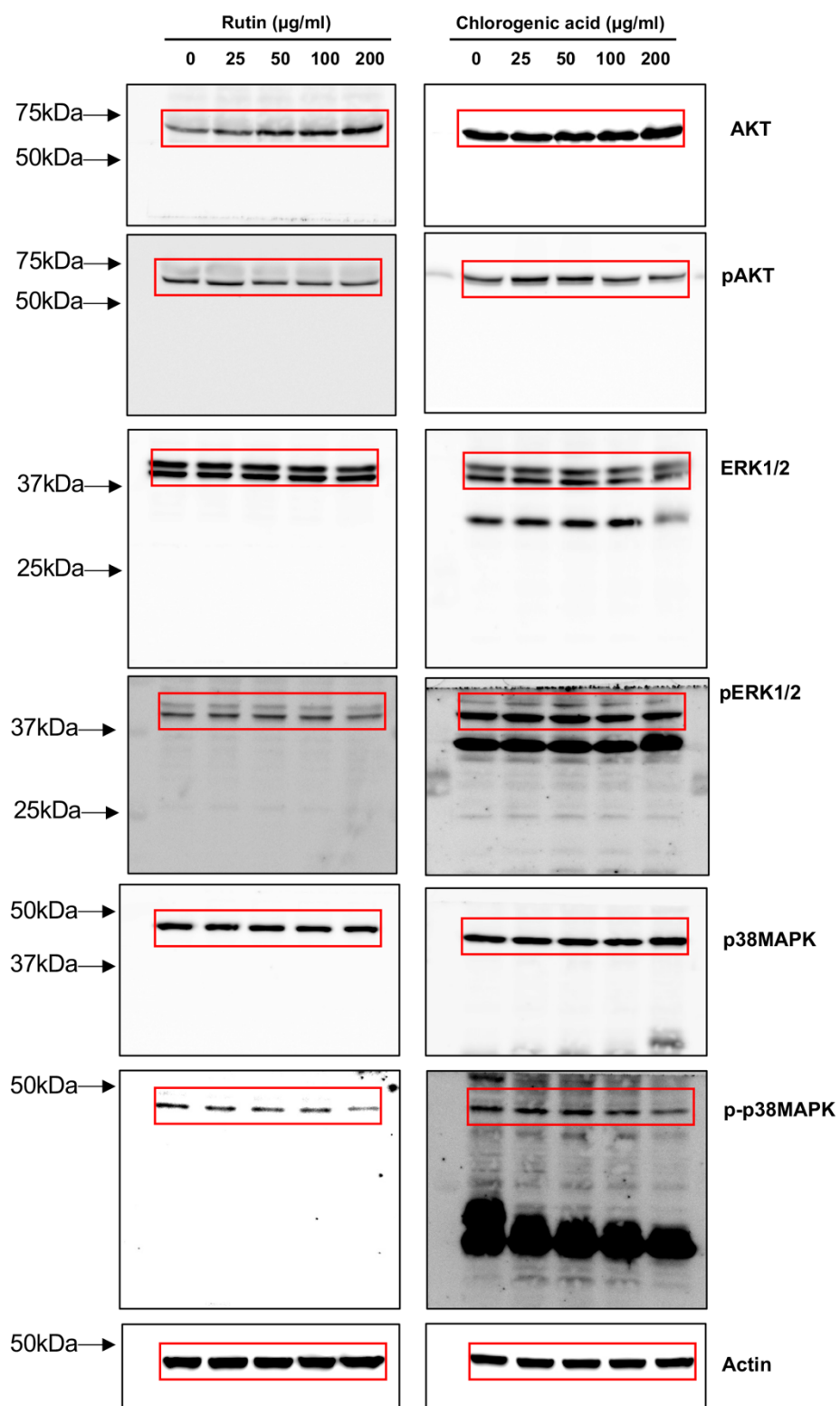


**Supplementary Figure S4.** Whole un-cropped images of the original western blots showing all bands with molecular weight markers. These gels correspond to those shown in Figure 4

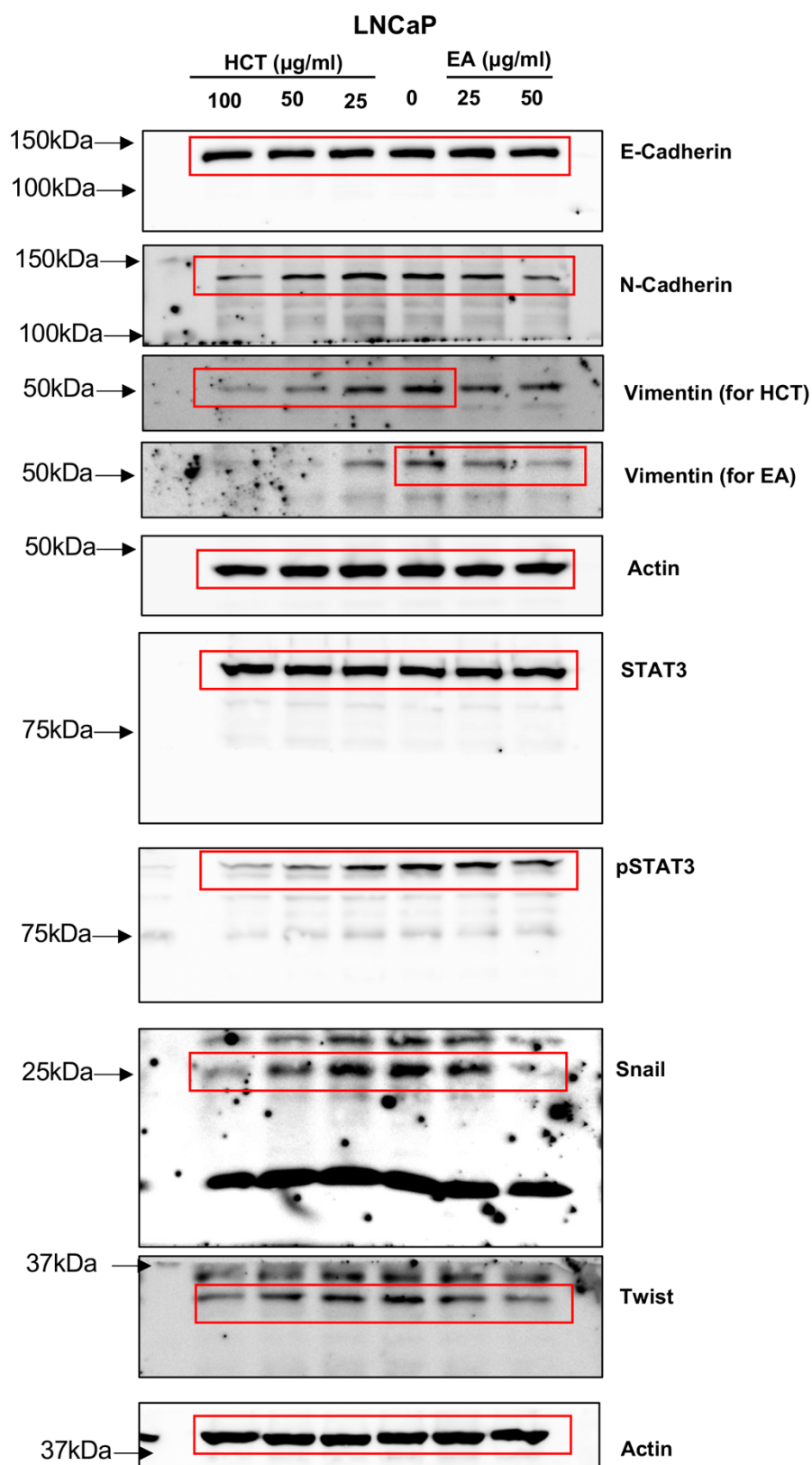


Supplementary Figure S5. Cont.

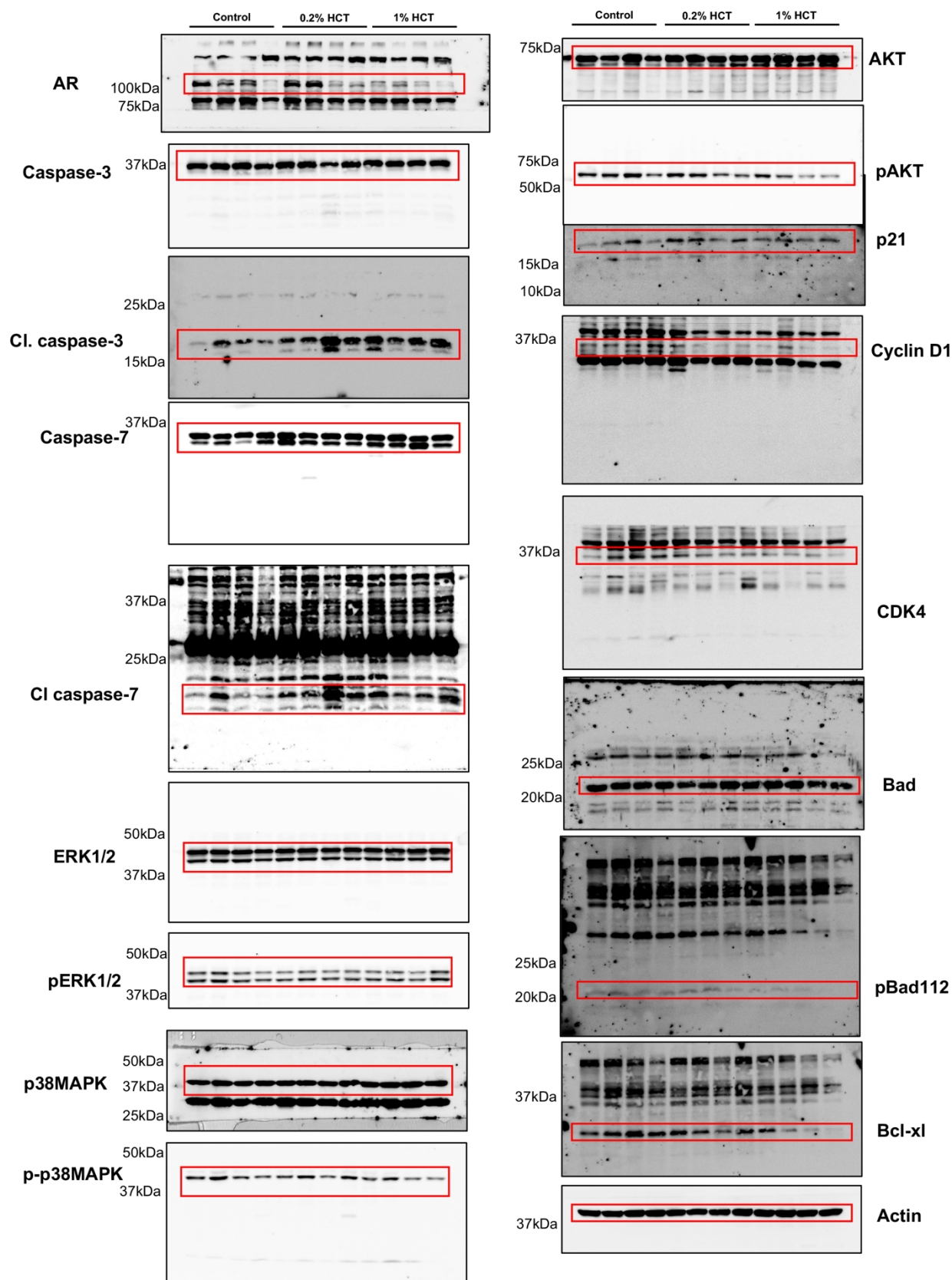




**Supplementary Figure S5.** Whole un-cropped images of the original western blots showing all bands with molecular weight markers. These gels correspond to those shown in Figure 5E

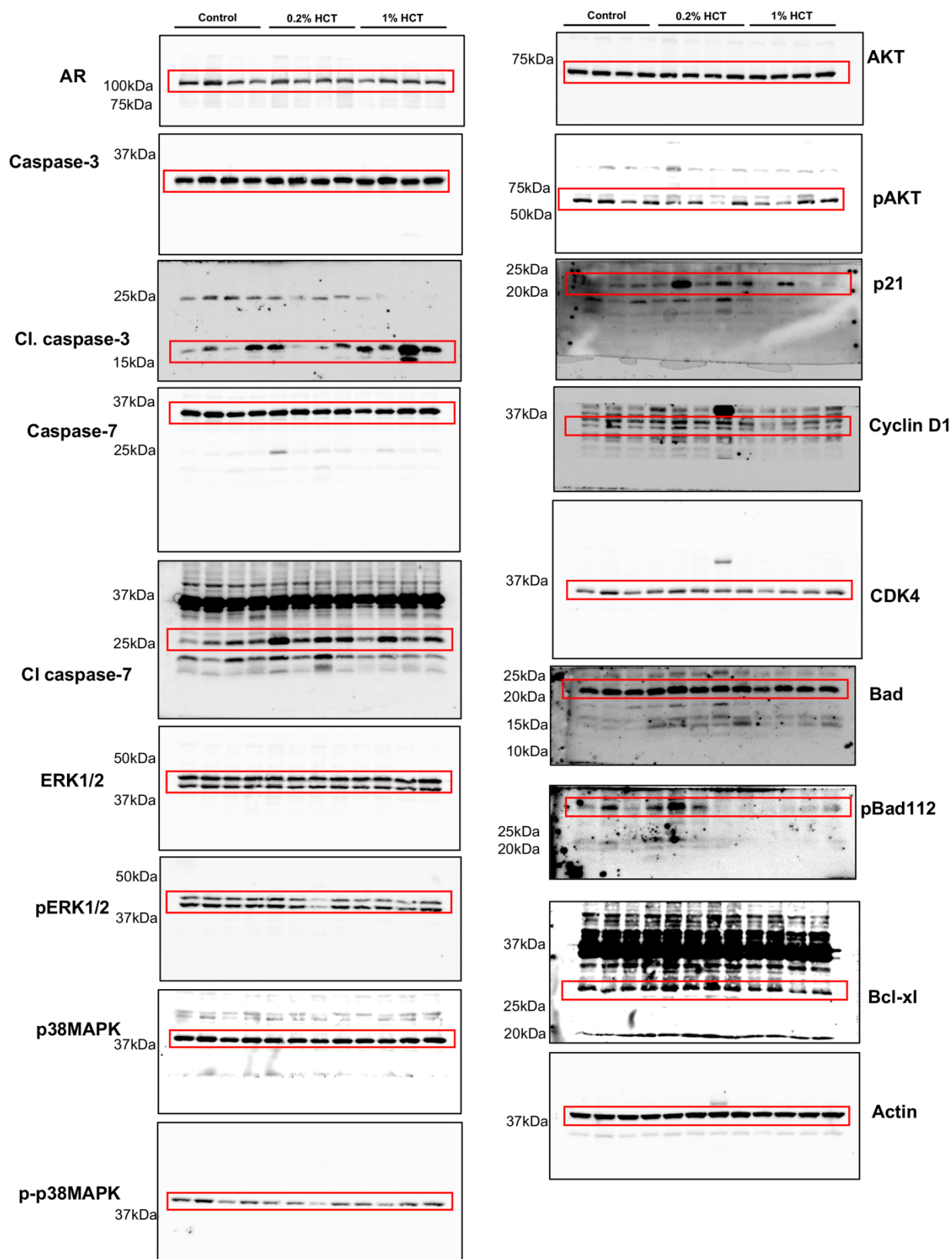


**Supplementary Figure S6.** Whole un-cropped images of the original western blots showing all bands with molecular weight markers. These gels correspond to those shown in Figure 6B



**Supplementary Figure S7.** Whole un-cropped images of the original western blots showing all bands with molecular weight markers. These gels correspond to those shown in Figure 8





**Supplementary Figure S8.** Whole un-cropped images of the original western blots showing all bands with molecular weight markers. These gels correspond to those shown in Figure 10