

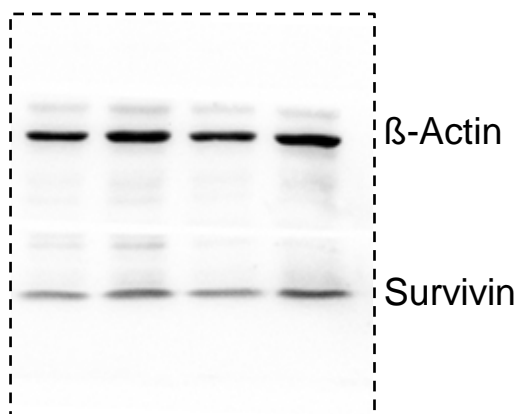
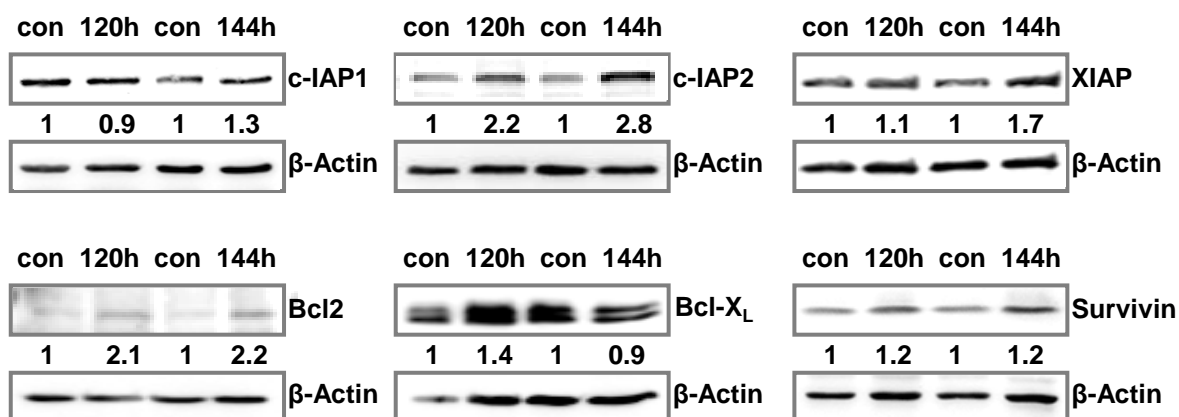
If not stated otherwise immunodetection was performed using the iBright CL1000 (Invitrogen) system, directly scanning the area of interest.

Presented scans were not processed by additional software.

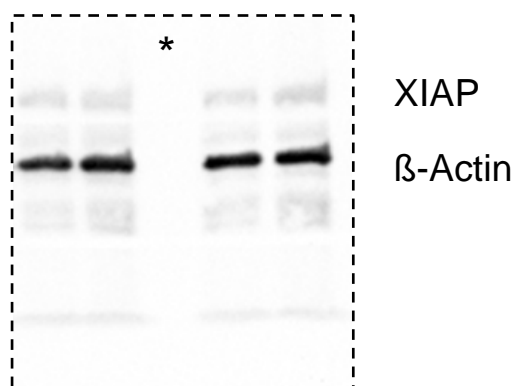
Dotted lines show the size of the scanned area.

Detection of the protein of interest and loading controls (HSP90/ β -Actin) were performed on the same membrane.

In some cases, the membrane was cut, to perform detection of two different proteins at the same time.

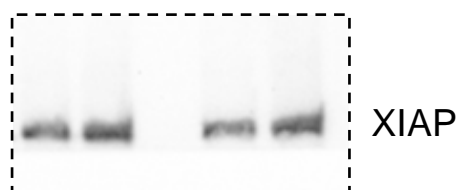


Membran cut
Immunodetection
performend in parallel



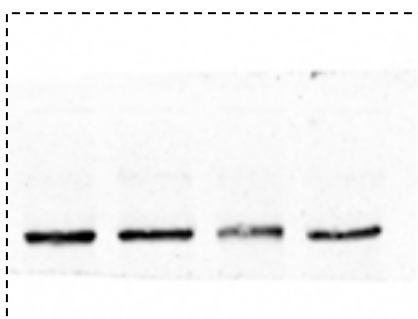
* Lane empty (air bubble in gel)

Membran cut
Immunodetection
performend in parallel



Higher exposure
membrane part with XIAP

c-IAP1



β -Actin
GAPDH

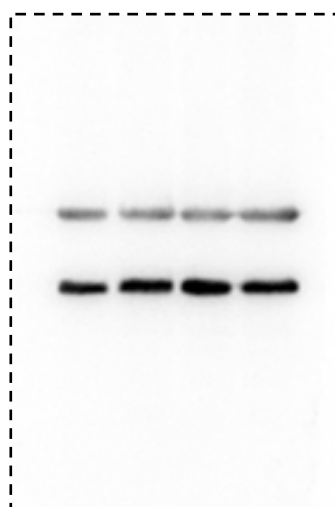


Membran cut and immunodetection performend in parallel

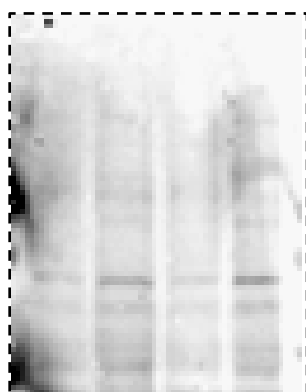
c-IAP2



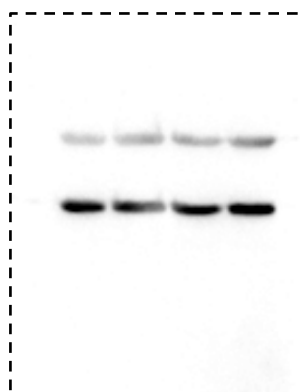
HSP90
 β -Actin



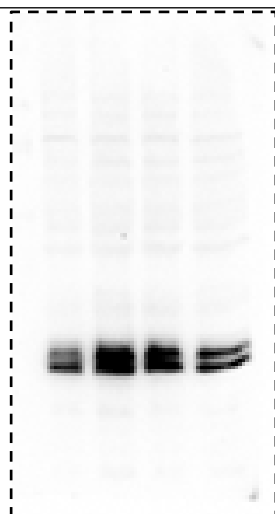
Bcl2



HSP90
 β -Actin



Bcl_{XL}



HSP90
 β -Actin

