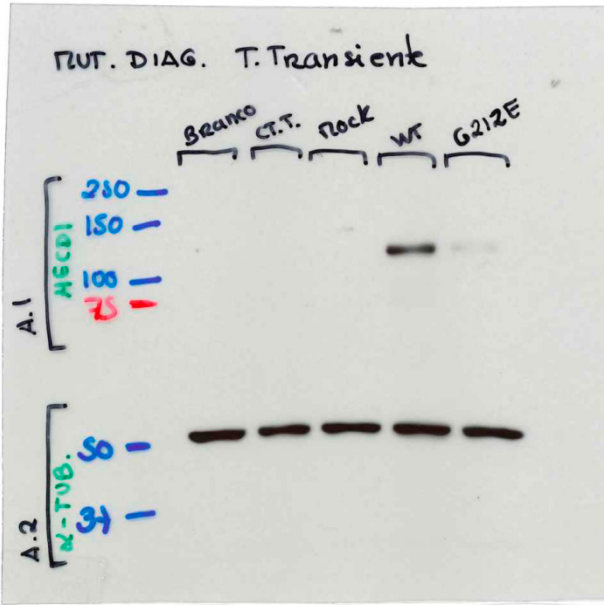


Supplementary Material

Western Blot analysis of E-cadherin and Tubulin. Original blot from Figure 3A and corresponding densitometry readings. Antibodies are indicated in green. Molecular weight markers are labeled in blue and red.



Band	E-cadherin density (INT/mm2)	E-cadherin without background	Tubulin density (INT/mm2)	Tubulin without background	E-cadherin / Tubulin
Parental	5217.51	106.07	10108.78	4736.35	0.02
Mock	5249.96	138.51	10275.98	4903.55	0.02
WT	10317.05	5205.61	10598.41	5225.98	0.99
G212E	5893.10	781.65	10223.34	4850.91	0.16
Background	5111.44	0.00	5372.43	0.00	0.00