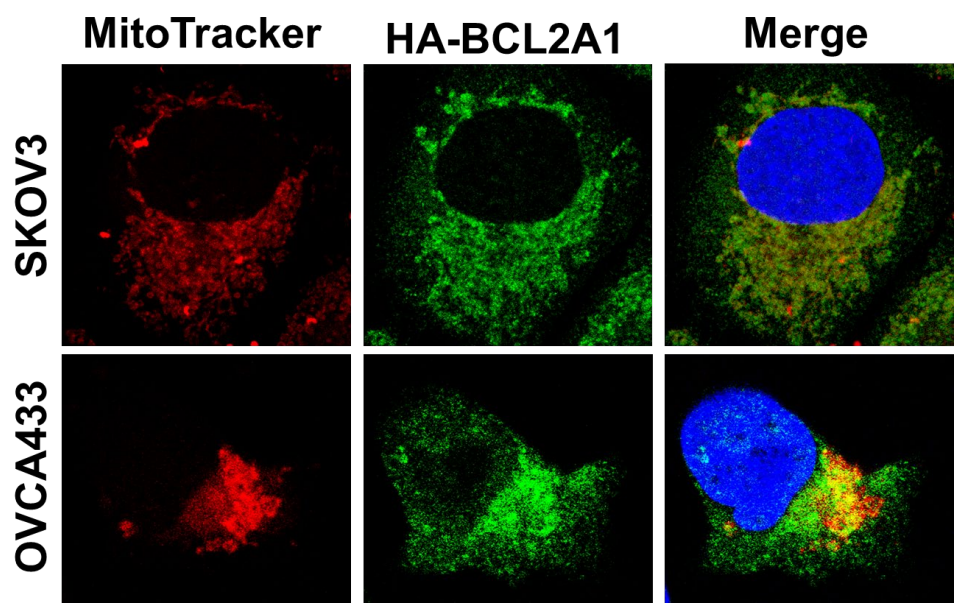


Supplementary Fig. S6



Representative images showing BCL2A1 is localized on mitochondria of ovarian cancer cells. The HA-BCL2A1 plasmid was transient transfection into SKOV3 and OVCA433 cells. After 24 h, ovarian cancer cells were fixed and stained with MitoTracker® (Invitrogen) (Red), anti-HA (Green) and Dapi (Blue). The immunofluorescent images were captured by using confocal microscopy (Nikon).