

	Low	Intermediate	High	p value
GEIS cohort, n=37	n=20	n=8	n=9	
Recurrence/progression				
No (%)	0 (0)	0 (0)	0 (0)	
Yes (%)	20 (54.1)	8 (21.6)	9 (24.3)	
Outcome				
Alive (%)	15 (60)	4 (16)	6 (24)	0.4417
Died of disease (%)	5 (41.7)	4 (33.3)	3 (25)	
Local cohort, n=18	n=11	n=5	n=2	
Recurrence/progression				0.0022
No (%)	11 (73.3)	4 (26.7)	0 (0)	
Yes (%)	0 (0)	1 (33.3)	2 (66.7)	
Outcome				0.0145
Alive (%)	11 (64.7)	5 (29.4)	1 (5.9)	
Died of disease (%)	0 (0)	0 (0)	1 (100)	

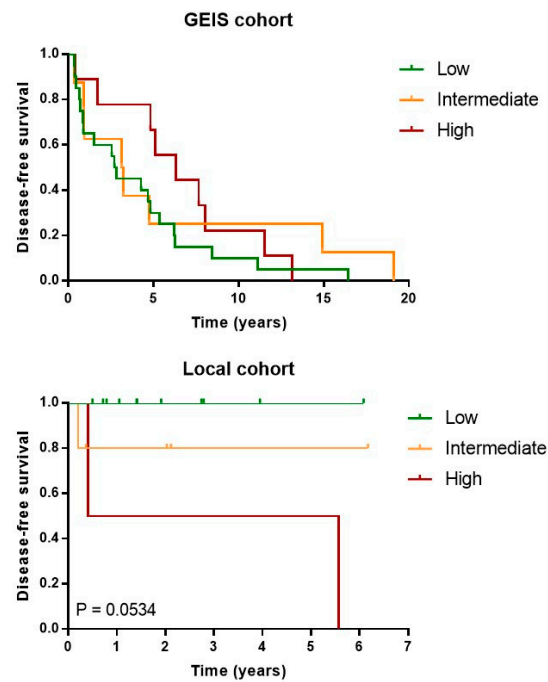


Figure S1. Patient risk stratification in GEIS and local cohorts attending to the *mDemicco* system. Patients with age, tumor size, mitotic count and necrosis available data were classified into three risk groups (low, intermediate and high) according to *mDemicco* risk stratification model. Kaplan-Meier survival curves of disease-free survival of GEIS (top) and local (bottom) cohorts, stratified based on risk groups.