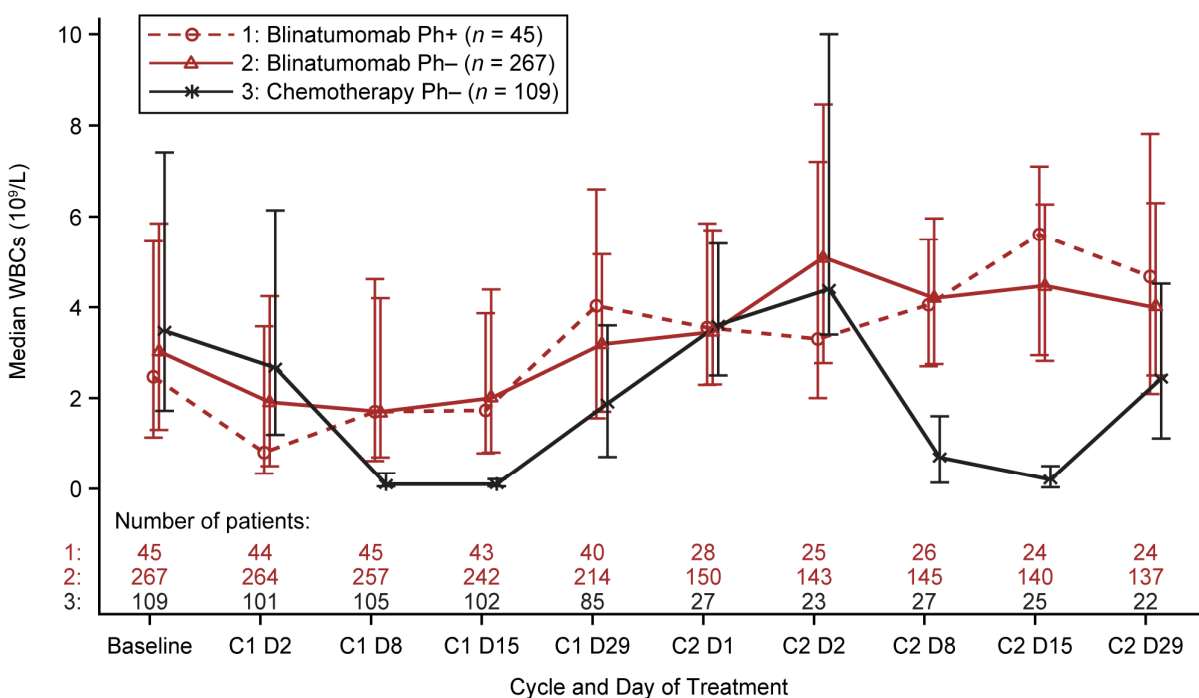


Supplementary materials:

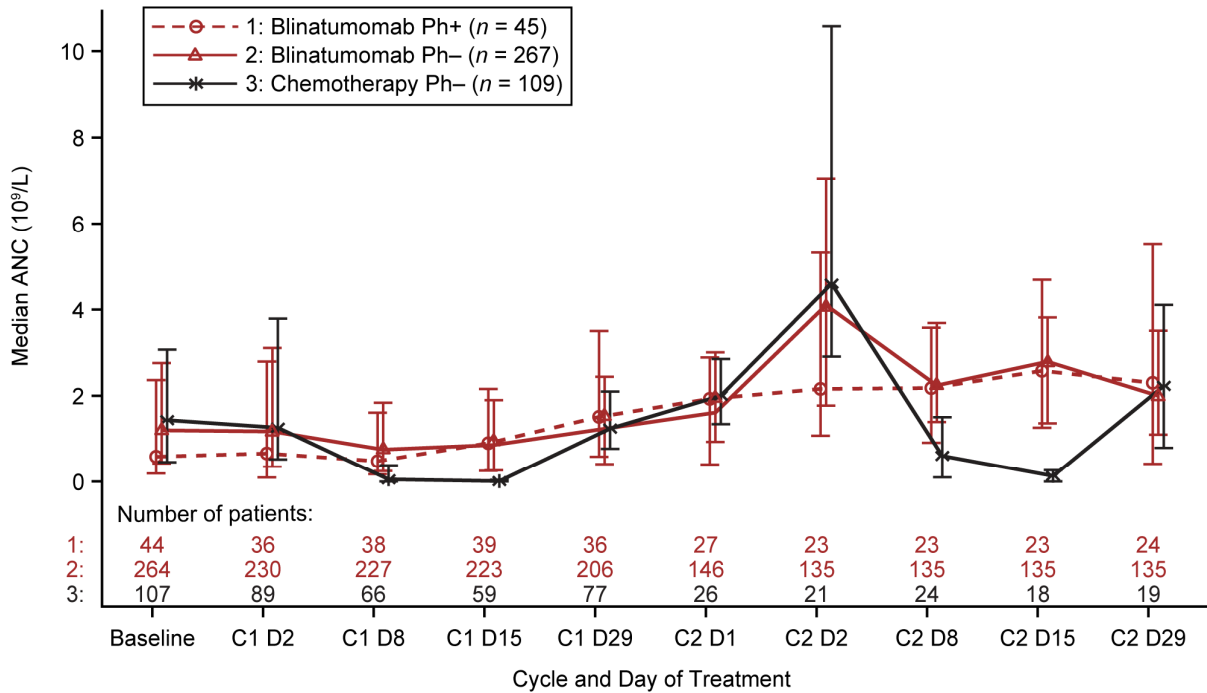
# Impact of Blinatumomab Treatment on Bone Marrow Function in Patients with Relapsed/Refractory B Cell Precursor Acute Lymphoblastic Leukemia

Hagop M. Kantarjian <sup>1</sup>, Gerhard Zugmaier <sup>2\*,†</sup>, Monika Brüggemann <sup>3</sup>, Brent L. Wood <sup>4</sup>, Heinz A. Horst <sup>5</sup>, Yi Zeng <sup>6</sup> and Giovanni Martinelli <sup>7</sup>

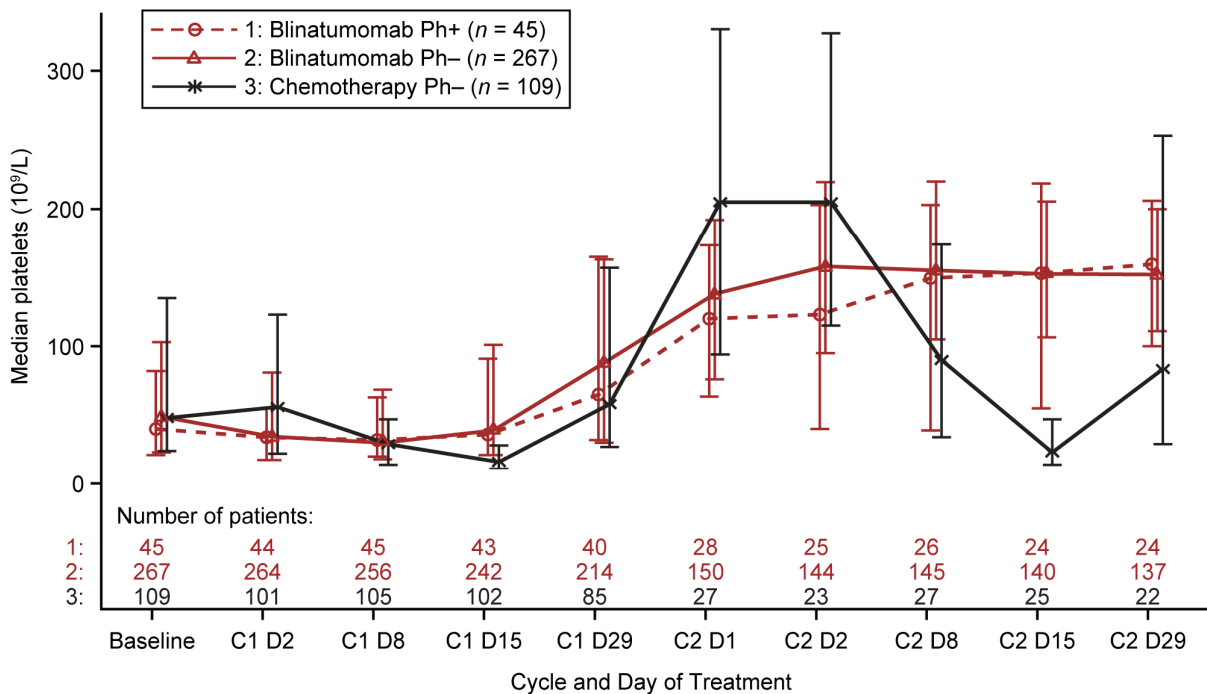
## A. Median WBC



## B. Median ANC



## C. Median platelet count



**Figure S1.** Peripheral blood counts of patients with R/R BCP ALL at baseline and during two treatment cycles with blinatumomab or chemotherapy. Peripheral blood counts were assessed at baseline, during and after treatment of all patients with R/R BCP ALL with blinatumomab ( $N = 312$ ;  $n = 267$  Ph- patients from the TOWER trial [12],  $n = 45$  Ph+ patients from the ALCANTARA trial [27]) or chemotherapy ( $N = 109$  from the TOWER trial). The median WBC (A), ANC (B), and platelet count (C) were plotted at baseline and on the cycle and day of treatment assessed. Vertical lines represent the first and third quartiles around the median. ALL, acute lymphoblastic leukemia; ANC, absolute neutrophil count; BCP, B-cell

precursor; C, cycle; D, day; Ph+, Philadelphia chromosome–positive; Ph-, Philadelphia chromosome–negative; R/R, relapsed/refractory; WBC, white blood cell.

**Table S1.** EFS analyzed according to response within 12 weeks of treatment with blinatumomab.

Heading	Achieved CR (N = 91)	Achieved CRh/CRi (N = 28)
Patient status		
Number of patients	91	28
Events – <i>n</i> (%)	49 (53.8)	19 (67.9)
Relapse	27 (29.7)	6 (21.4)
Progressive disease	4 (4.4)	3 (10.7)
Extramedullary relapse	0 (0.0)	2 (7.1)
Death from any cause	18 (19.8)	8 (28.6)
Time-to-event (KM) (months) <sup>a</sup>		
Median	8.9	6.7
95% CI (median)	(6.0–10.7)	(2.5–11.2)
Q1, Q3	4.2, 22.7	2.3, 14.5
Min, max	0.8, 22.7	0.8, 20.1

CI, confidence interval; CR, complete remission; CRh, CR with partial recovery of peripheral blood counts; CRi, CR with incomplete recovery of peripheral blood counts; EFS, event-free survival; KM, Kaplan-Meier; Q, quartile. <sup>a</sup> Months are calculated as days from first response date to event/censor date, divided by 30.5.

**Table S2.** EFS analyzed according to response within 12 weeks of treatment with chemotherapy.

Heading	Achieved CR (N = 21)	Achieved CRh/CRi (N = 12)
Patient status		
Number of patients	21	12
Events – n (%)	9 (42.9)	10 (83.3)
Relapse	5 (23.8)	3 (25.0)
Progressive disease	0 (0.0)	1 (8.3)
Extramedullary relapse	0 (0.0)	1 (8.3)
Death from any cause	4 (19.0)	5 (41.7)
Time-to-event (KM) (months) <sup>a</sup>		
Median	7.8	1.7
95% CI (median)	(2.2–19.0)	(0.9–5.4)
Q1, Q3	3.8, 19.0	1.1, 5.4
Min, max	1.6, 19.0	0.9, 12.2

CI, confidence interval; CR, complete remission; CRh, CR with partial recovery of peripheral blood counts; CRi, CR with incomplete recovery of peripheral blood counts; EFS, event-free survival; KM, Kaplan-Meier; Q, quartile.

<sup>a</sup> Months are calculated as days from first response date to event/censor date, divided by 30.5.

**Table S3.** OS analyzed according to response within 12 weeks of treatment with blinatumomab.

Heading	Achieved CR (N = 91)	Achieved CRh/CRi (N = 28)
Patient status		
Number of patients	91	28
Events – n (%)	40 (44.0)	16 (57.1)
Death from any cause	40 (44.0)	16 (57.1)
Time-to-event (KM) (months) <sup>a</sup>		
Median	15.0	11.9
95% CI (median)	(10.4–NE)	(3.9–NE)
Q1, Q3	8.4, NE	3.3, NE
Min, max	2.3, 15.4	2.0, 14.5

CI, confidence interval; CR, complete remission; CRh, CR with partial recovery of peripheral blood counts; CRi, CR with incomplete recovery of peripheral blood counts; KM, Kaplan-Meier; NE, not estimable; OS, overall survival; Q, quartile. <sup>a</sup>

Months are calculated as days from first response date to event/censor date, divided by 30.5.

**Table S4.** OS analyzed according to response within 12 weeks of treatment with chemotherapy.

Heading	Achieved CR (N = 21)	Achieved CRh/CRi (N = 12)
Patient status		
Number of patients	21	12
Events – n (%)	7 (33.3)	8 (66.7)
Death from any cause	7 (33.3)	8 (66.7)
Time-to-event (KM) (months) <sup>a</sup>		
Median	18.9	5.2
95% CI (median)	(9.3–NE)	(1.6–NE)
Q1, Q3	9.3, NE	2.7, NE
Min, max	1.7, 18.9	0.9, 5.4

CI, confidence interval; CR, complete remission; CRh, CR with partial recovery of peripheral blood counts; CRi, CR with incomplete recovery of peripheral blood counts; KM, Kaplan-Meier; NE, not estimable; OS, overall survival; Q, quartile. <sup>a</sup>

Months are calculated as days from first response date to event/censor date, divided by 30.5.