

Figure S1

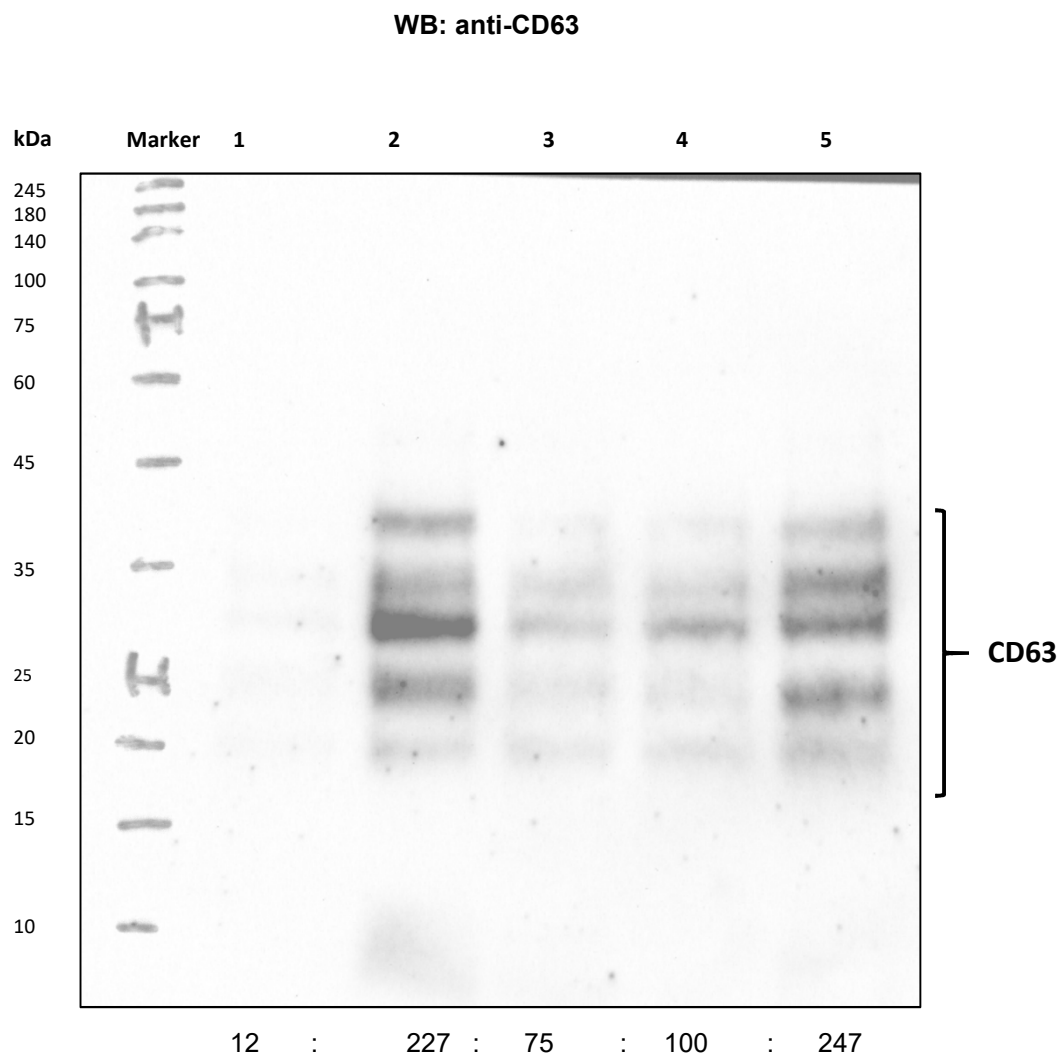


Figure S2

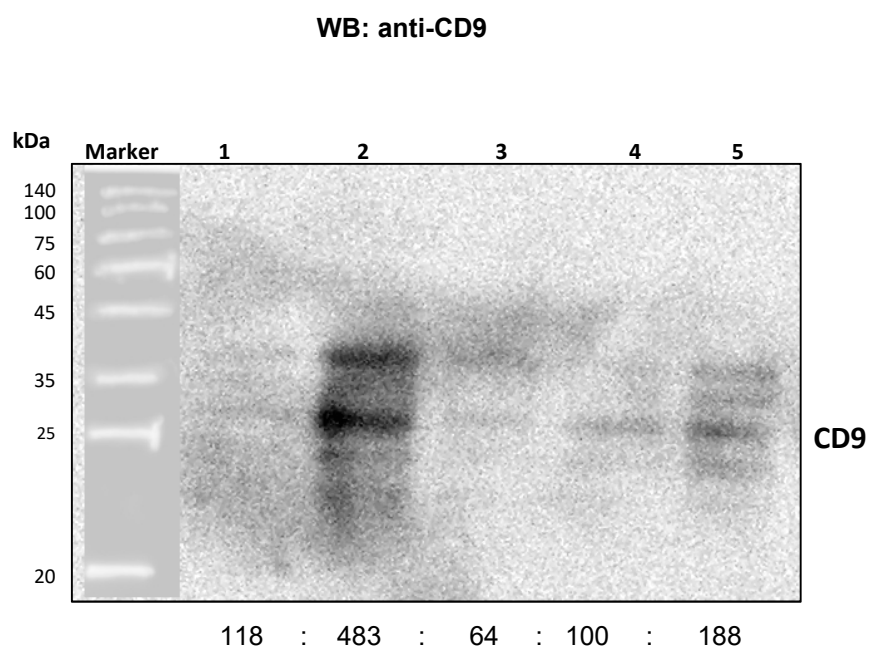


Figure S3

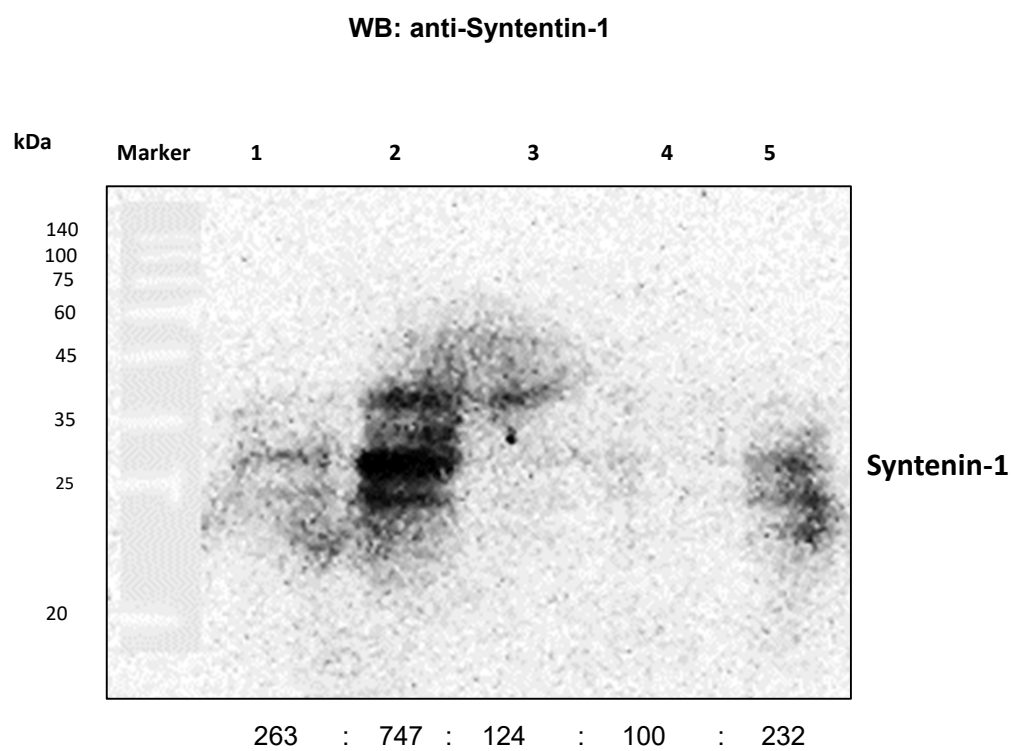


Figure S4

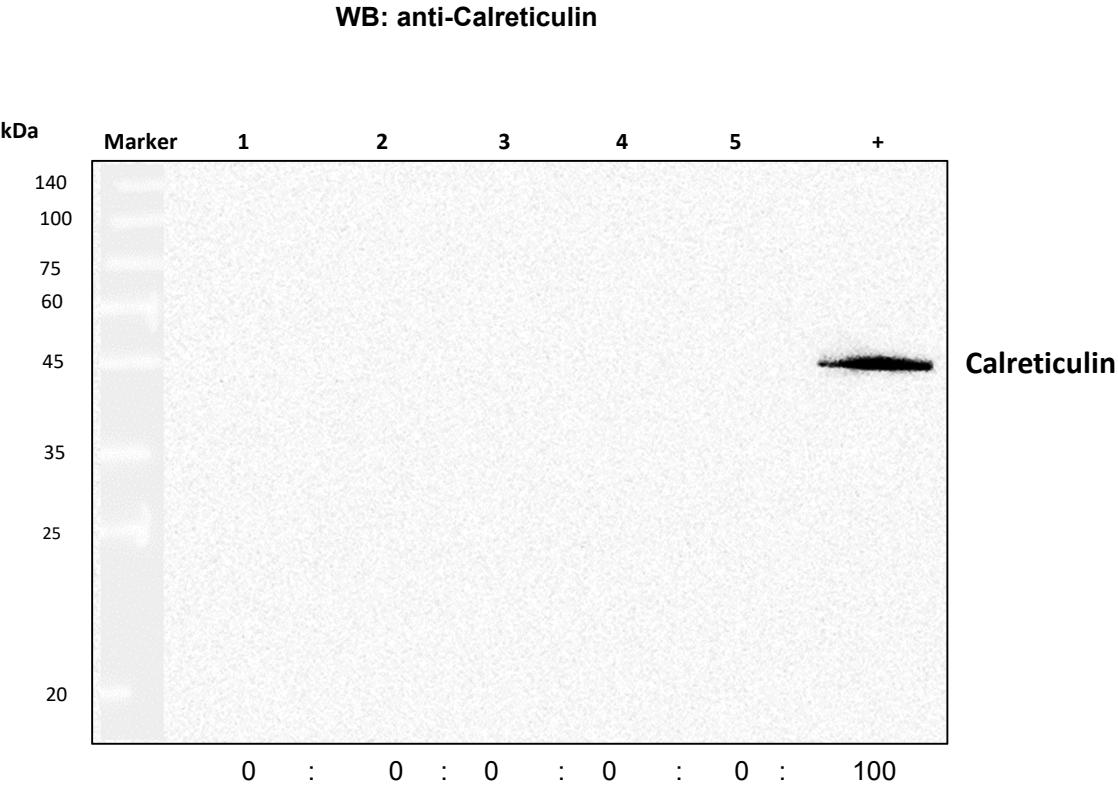
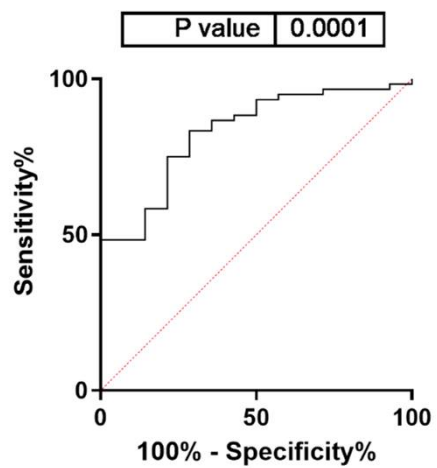


Figure S5



AUC: 0.8286 (standard error: 0.05598; 95% CI: 0.7189 to 0.9383; $p < 0.001$); Sensitivity: 75.0% (95% CI: 62.8% to 84.2%); Specificity: 78.8% (95% CI: 52.4% to 92.4%)

Figure S6

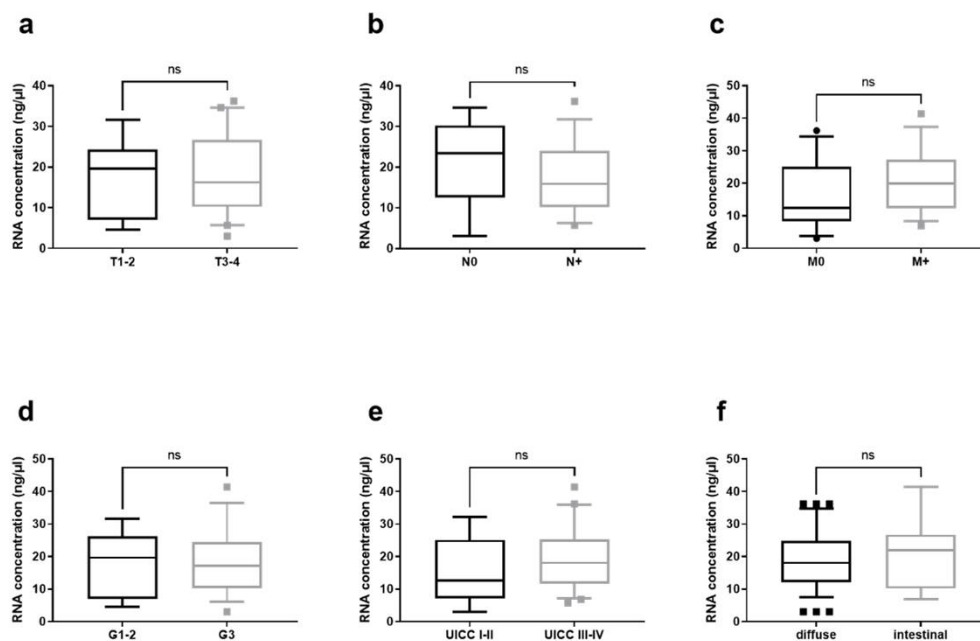


Figure S6. Total RNA levels in EVs from GC patients and their clinico-pathological stratification. Total RNA levels in (a) T1-2 and T3-4 gastric cancers, (b) nodal negative (N0), and nodal positive (N+), (c) non-metastasized (M0) and metastasized (M+), (d) grade 1-2 (G1-2) and grade 3-4 (G3-4), (e) UICC-stage I-II and III-IV, and (f) according to the Laurén's classification. Mann Whitney-test was used to analyze the differences between the two groups (G – grading; M – metastasis; n – nodal; ns – not significant; T – tumor; UICC - Union Internationale Contre le Cancer).

Figure S7

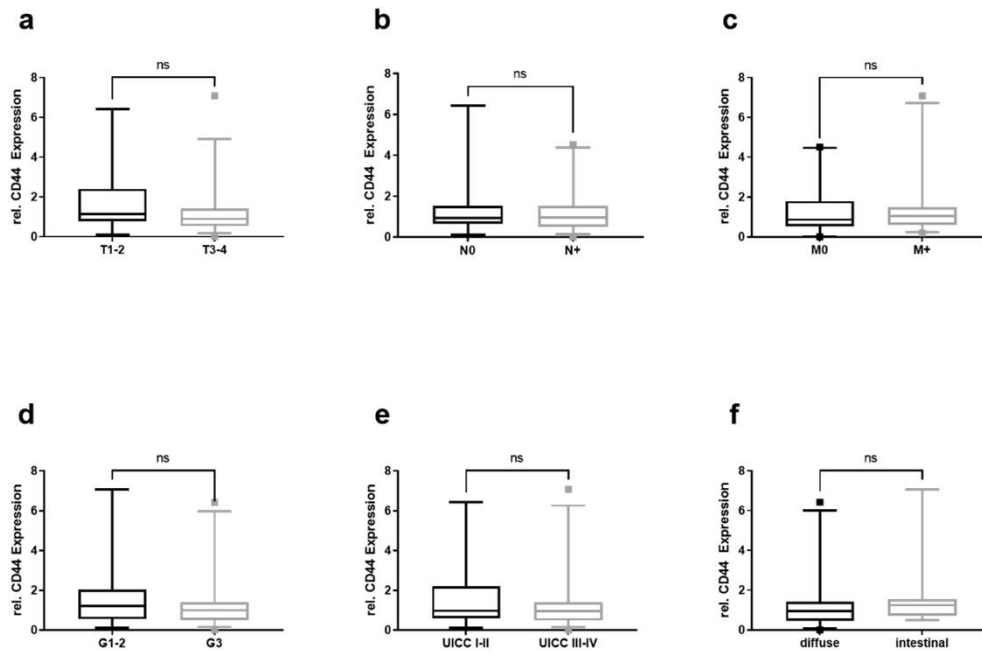


Figure S7. Relative CD44 mRNA levels in EVs from GC patients and their clinico-pathological stratification. Relative mRNA levels of CD44 in (a) T1-2 and T3-4 gastric cancers, (b) nodal negative (N0), and nodal positive (N+), (c) non-metastasized (M0) and metastasized (M+), (d) grade 1-2 (G1-2) and grade 3-4 (G3-4), (e) UICC-stage I-II and III-IV, and (f) according to the Lauren's classification. Mann Whitney-test was used to analyze the differences between the two groups (G – grading; M – metastasis; n – nodal; ns – not significant; T – tumor; UICC - Union Internationale Contre le Cancer).