

Prognostic Value of Plasma hPG₈₀ (Circulating Progastrin) in Metastatic Renal Cell Carcinoma

Manish Kohli, Winston Tan, Bérengère Vire, Pierre Liaud, Méлина Blairvacq, Frederic Berthier, Daniel Rouison, George Garnier, Léa Payen, Thierry Cousin, Dominique Joubert, Alexandre Prieur

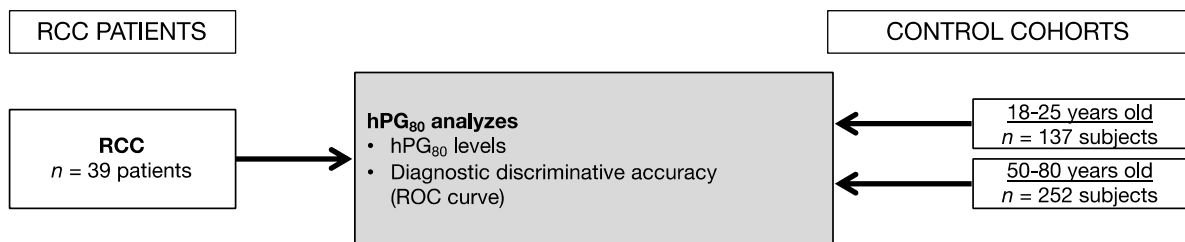


Figure S1. Flowchart of the study with RCC patients.

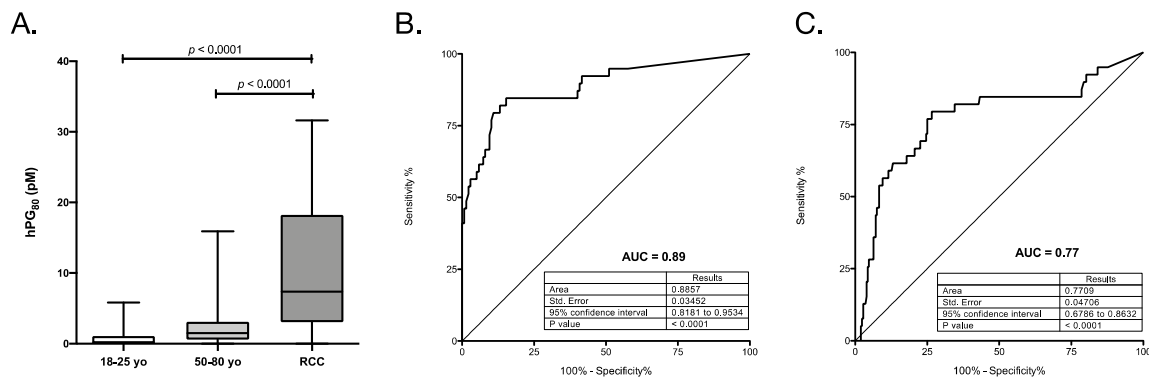


Figure S2. Levels and performances of plasma hPG₈₀ in patients with RCC patients. A. hPG₈₀ concentrations in RCC patients (*n* = 39) compared to 18-25 (*n* = 137) and 50-80 (*n* = 252) years old control groups. One-tailed Mann-Whitney test. B to C. Diagnostic discriminative accuracies of hPG₈₀ in RCC patients compared to control groups aged 18-25 year old (B) or 50-80 year old (C) using Receiver Operating Characteristics (ROC) curve analysis.

Table S1. Clinical and pathological characteristics for RCC patients.

		RCC
		N (%)
		<i>n</i> = 39
Age, years	Median (range)	67 (25–83)
Gender	Male	25 (64.1%)
	Female	14 (35.9%)
Histology	Clear cell	21
	Chromophobe	3
	Papillary	10
	Other	5
Fuhrman Grade (G)	G1	2
	G2	15
	G3	7
	G4	9
	Not applicable	5

	Unspecified	1
Sarcomatoid differentiation	Present	NA
	Absent	NA
Necrosis	Present	NA
	Absent	NA
Clinical stage	I	23
	II	4
	III	11
	IV	0
	Unspecified	1

NA: non available

Table S2. hPG₈₀ levels in RCC patients.

		N	hPG ₈₀	
			Median (IQR), pM	Mean (SE), pM
Patients	RCC	39	7.36 (3.05-18.23)	10.73 (1.61)



Copyright: © 2021 by the authors. Licensee MDPI, Basel, Switzerland. This article is an open access article distributed under the terms and conditions of the Creative Commons Attribution (CC BY) license (<http://creativecommons.org/licenses/by/4.0/>).