

Supplementary Materials: Exosomal HMGB1 Promoted Cancer Malignancy

Jiaan-Der Wang, Ya-Yu Wang, Shih-Yi Lin, Cheng-Yi Chang, Jian-Ri Li, Shi-Wei Huang, Wen-Ying Chen, Su-Lan Liao and Chun-Jung Chen

Figure 1A

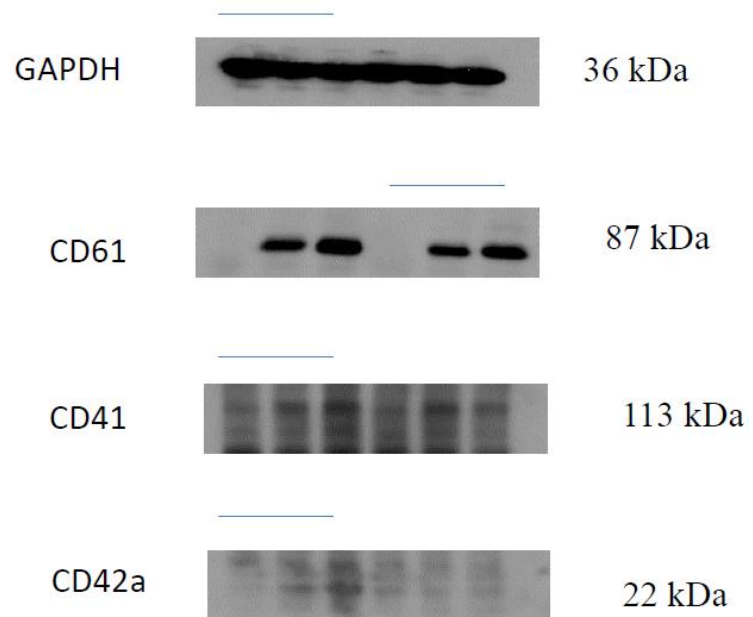


Figure 2D



8459.0000	6014.0000
	3158.0000
7124.0000	3875.0000
	4963.0000
6695.0000	5519.0000
	5201.0000
9275.0000	4012.0000
	3856.0000

Figure 3C

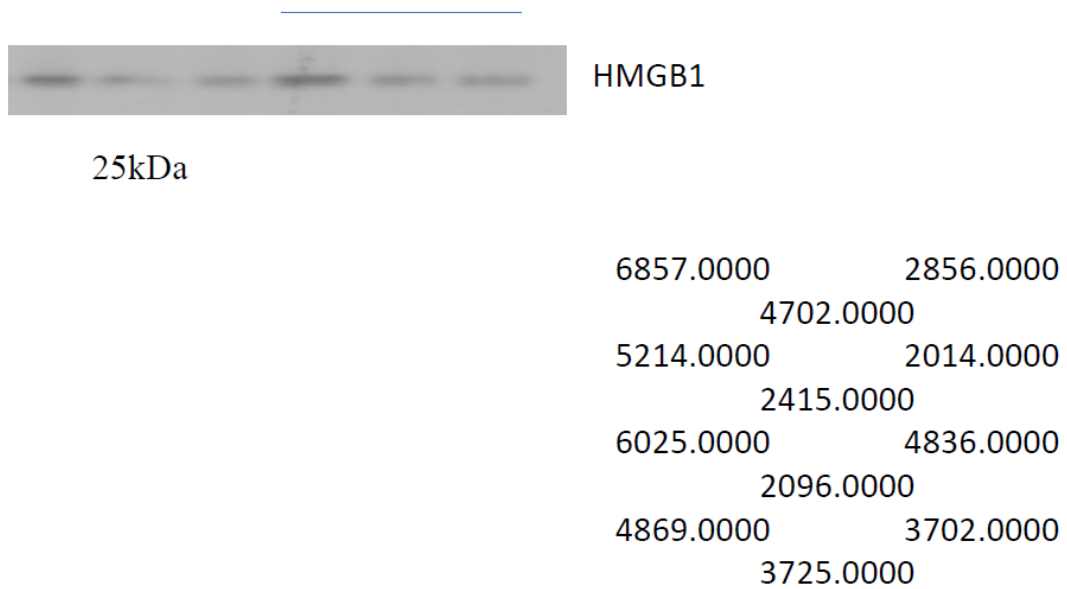
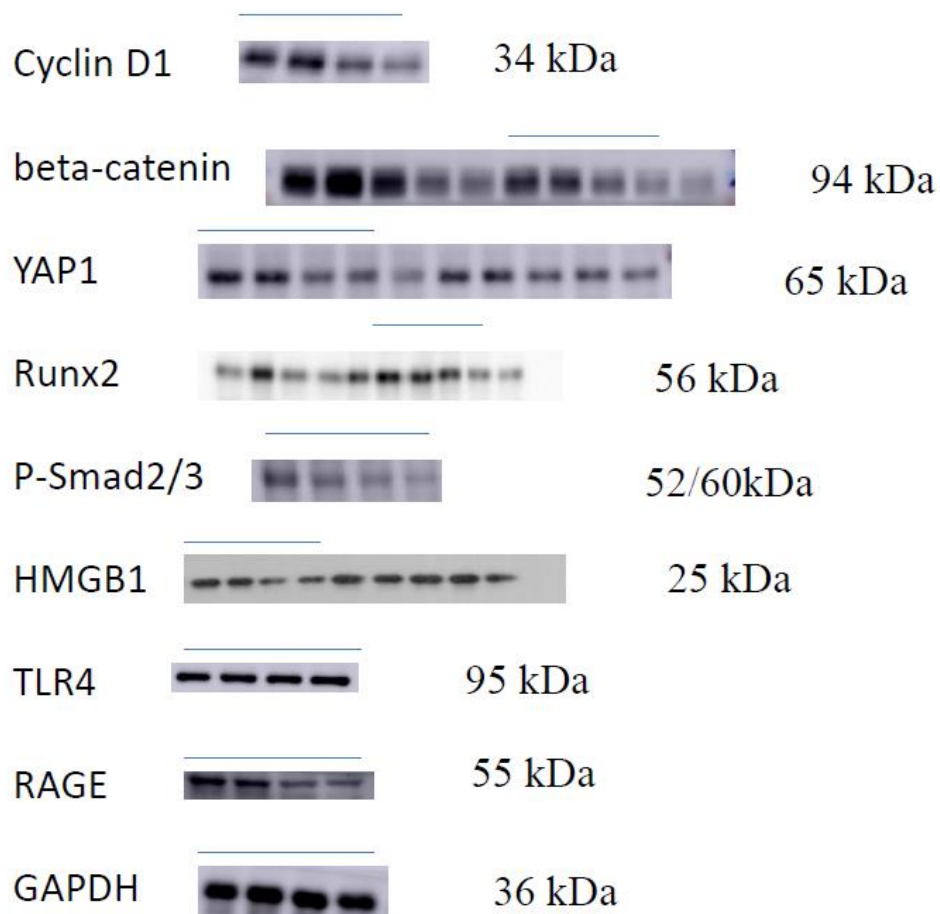


Figure 4E



	1.2300	1.0900	0.9700	0.8000
	1.0200	0.9700	0.7600	0.5900
Cyclin D1	1.1600	1.2400	0.8100	0.7900
	1.3500	1.1600	1.0300	0.6700
beta-catenin				
	1.1900	0.9600	0.9400	0.4300
YAP1	1.2700	1.1100	0.7200	0.7000
	1.0300	1.1700	0.6400	0.5900
Runx2	1.1000	1.0900	0.8500	0.7400
	1.3600	1.2800	0.8100	0.6200
Ratio/GAPDH				
	1.0200	1.0900	0.6700	0.6300
	0.8400	1.1800	0.8500	0.7400
	0.9600	1.0600	0.7400	0.4900
	1.1300	0.8600	0.6600	0.5700
	0.9400	0.7900	0.7400	0.6700
	1.0800	1.0700	0.6500	0.4700
	0.8500	1.0200	0.5900	0.5500
	0.7600	0.8600	0.8000	0.6800
	1.0600	0.7000	0.6200	0.4000
P-Smad2/3	0.9800	0.7300	0.5400	0.3800
	0.8600	0.6000	0.4300	0.4900
HMGB1	0.9000	0.6700	0.5100	0.2900
TLR4				
	0.8900	0.6900	0.5700	0.3200
	0.6700	0.7200	0.4600	0.5100
RAGE	0.8200	0.8500	0.6100	0.4600
	0.7900	0.7900	0.4200	0.3700
Ratio/GAPDH				
	0.9500	0.9000	0.8600	0.8200
	0.7600	0.7500	0.7400	0.9400
	0.8400	0.8800	0.8200	0.6700
	0.9200	0.9300	0.9400	0.8100
	1.0600	0.8000	0.6700	0.4200
	1.1400	1.1100	0.5800	0.5600
	0.9800	1.0200	0.4600	0.4900
	0.8200	0.8700	0.5100	0.2700

Figure 6B

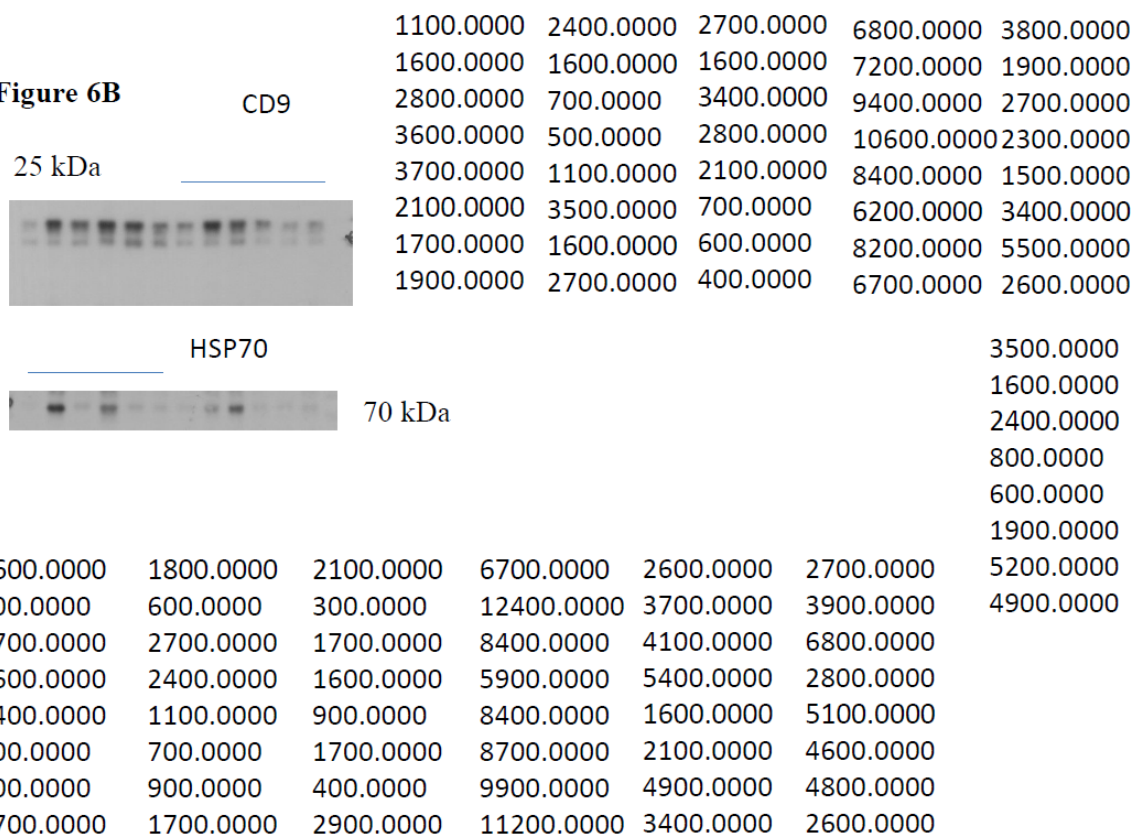


Figure 6D

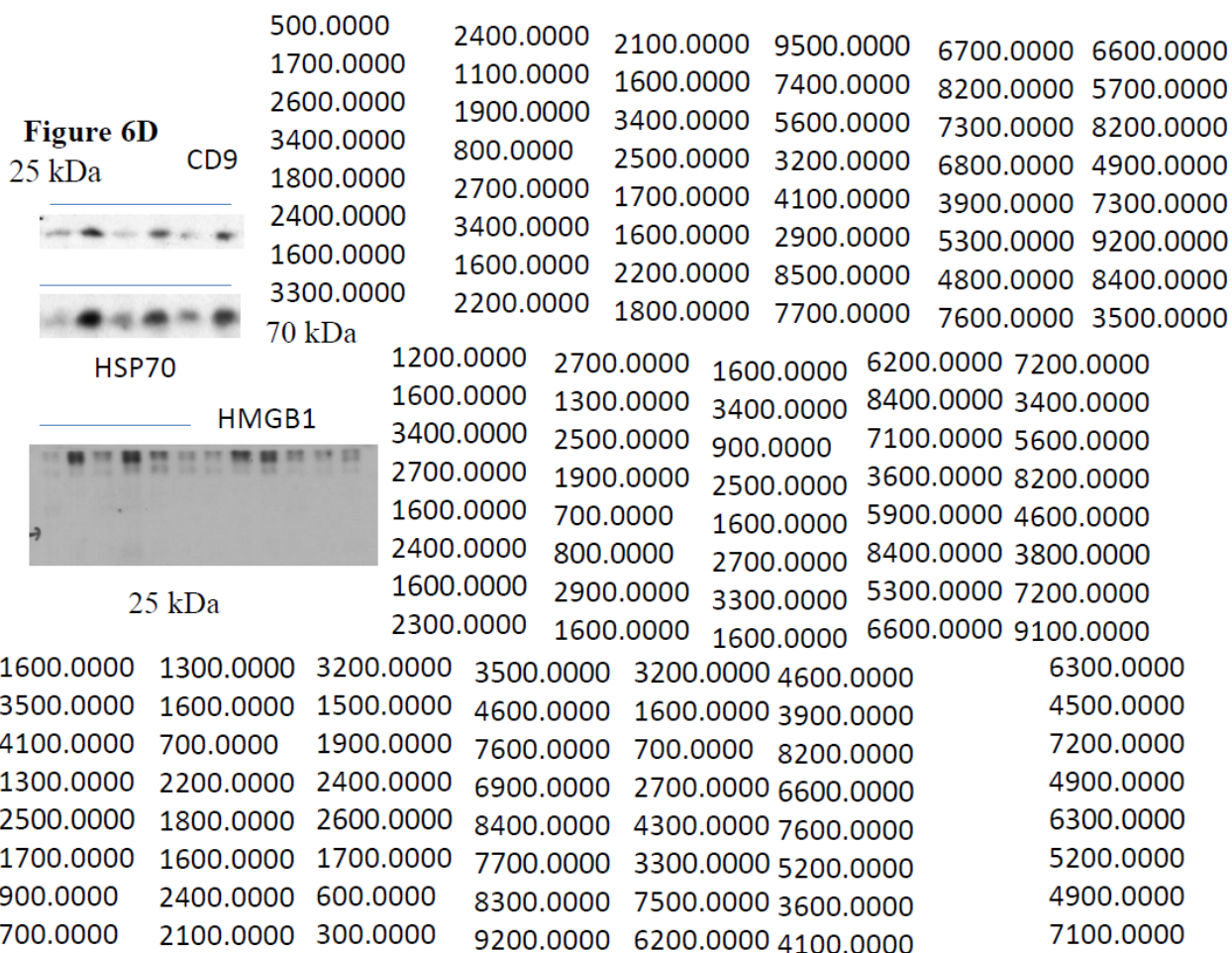
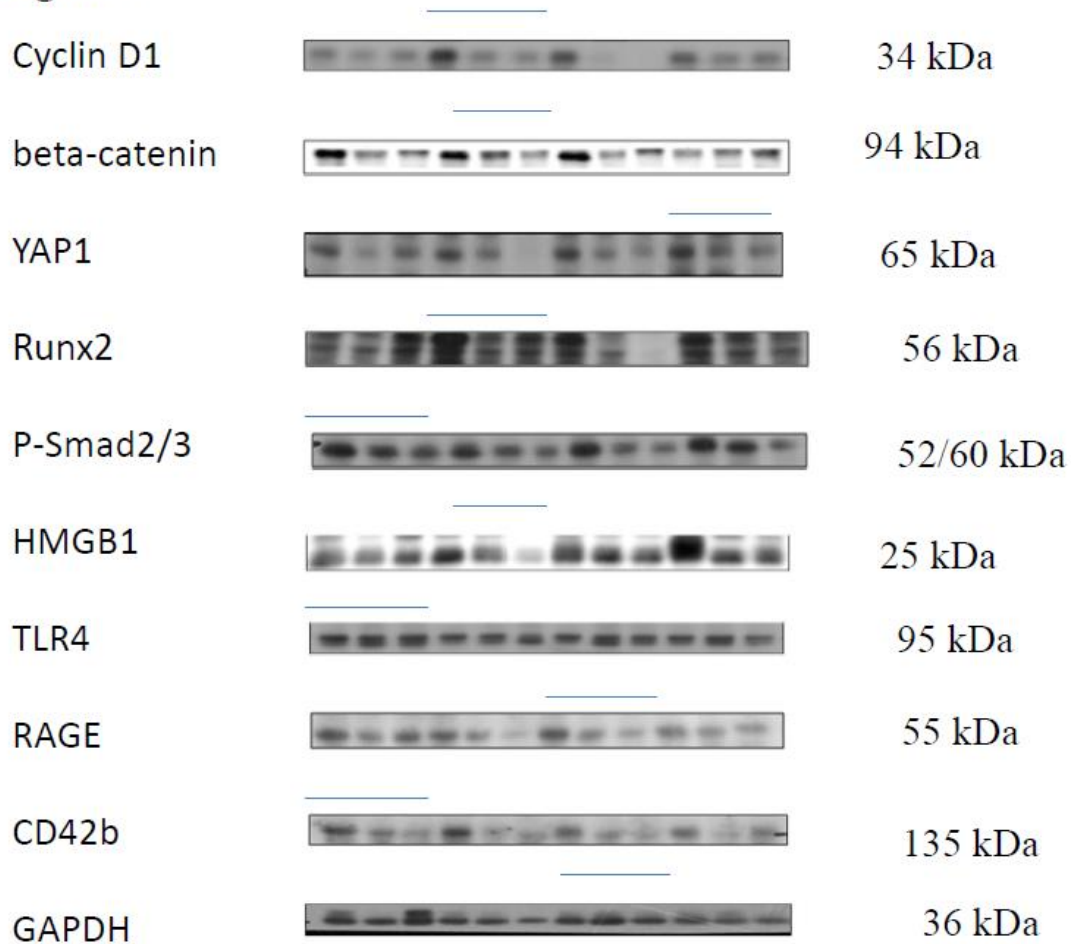


Figure 7



	1.2900	0.7200	0.7600	1.1700	0.6800	0.6900
Cyclin D1	1.1600	0.4900	0.6200	1.0500	0.7200	0.7000
	1.0800	0.6600	0.5100	1.3000	0.5400	0.6500
beta-catenin	1.1000	0.5700	0.4200	1.2900	0.6100	0.8400
	0.9500	0.8400	0.5300	1.4500	0.8200	0.5100
YAP1	0.8900	0.6500	0.6900	1.2500	0.6500	0.7300
	1.1100	0.7100	0.7200	1.0300	0.7500	0.6900
Runx2	1.0600	0.6300	0.5900	1.1600	0.8000	0.7500
Ratio/GAPDH				1.3700	0.8400	0.7000
	1.1300	0.6000	0.3700	1.2800	0.6200	0.5900
	1.0500	0.4900	0.4900	1.1900	0.9100	0.6700
	0.9400	0.7600	0.5100	1.3800	0.7200	0.8500
	0.8600	0.5200	0.6600	1.5700	0.6000	0.4900
	0.9300	0.6400	0.6700	1.2300	0.8500	0.6800
	0.9600	0.6300	0.5900	1.2700	0.7900	0.7100
	1.0800	0.5800	0.6400	1.1500	0.9300	0.6900
	1.0300	0.7100	0.3900			

	1.3800	0.6600	0.6100	1.3900	0.7100	0.6400
P-Smad2/3	1.1500	0.6400	0.5700	1.2500	0.6900	0.5400
	1.2600	0.7400	0.7900	1.1900	0.7700	0.4900
HMGB1	1.0700	0.9100	0.8500	1.2300	0.8400	0.7600
	1.1900	0.8500	0.6900	1.0500	0.6500	0.8000
TLR4	0.0900	0.8600	0.5900	1.0900	0.8500	0.6200
	1.1800	0.7200	0.6700	1.2000	0.6700	0.5800
RAGE	1.1100	0.6900	0.8400	1.1300	0.7200	0.7600

Ratio/GAPDH

	1.0900	1.0300	1.0800	1.0600	0.6200	0.7900
	1.1200	1.1900	1.1600	1.1400	0.7800	0.6200
	1.0100	0.9900	0.8500	0.9500	0.5900	0.4300
	0.8700	0.8400	0.7600	0.8700	0.4500	0.5100
	0.9200	0.9500	0.9400	0.9300	0.6700	0.5300
	0.9000	0.8500	0.9300	0.9600	0.7500	0.6300
	0.9700	0.7900	1.1600	1.0700	0.6400	0.5700
	1.0900	1.0300	1.0500	1.1900	0.5300	0.4200

CD42b

Ratio/GAPDH

	1.0600	0.5700	0.6200
	1.1400	0.6900	0.7800
	0.9500	0.7400	0.5100
	0.9000	0.6200	0.4300
	1.2100	0.8400	0.3500
	0.9600	0.6800	0.3700
	1.0500	0.7900	0.5200
	1.1100	0.8000	0.6100

Figure S1. The western blots figures.