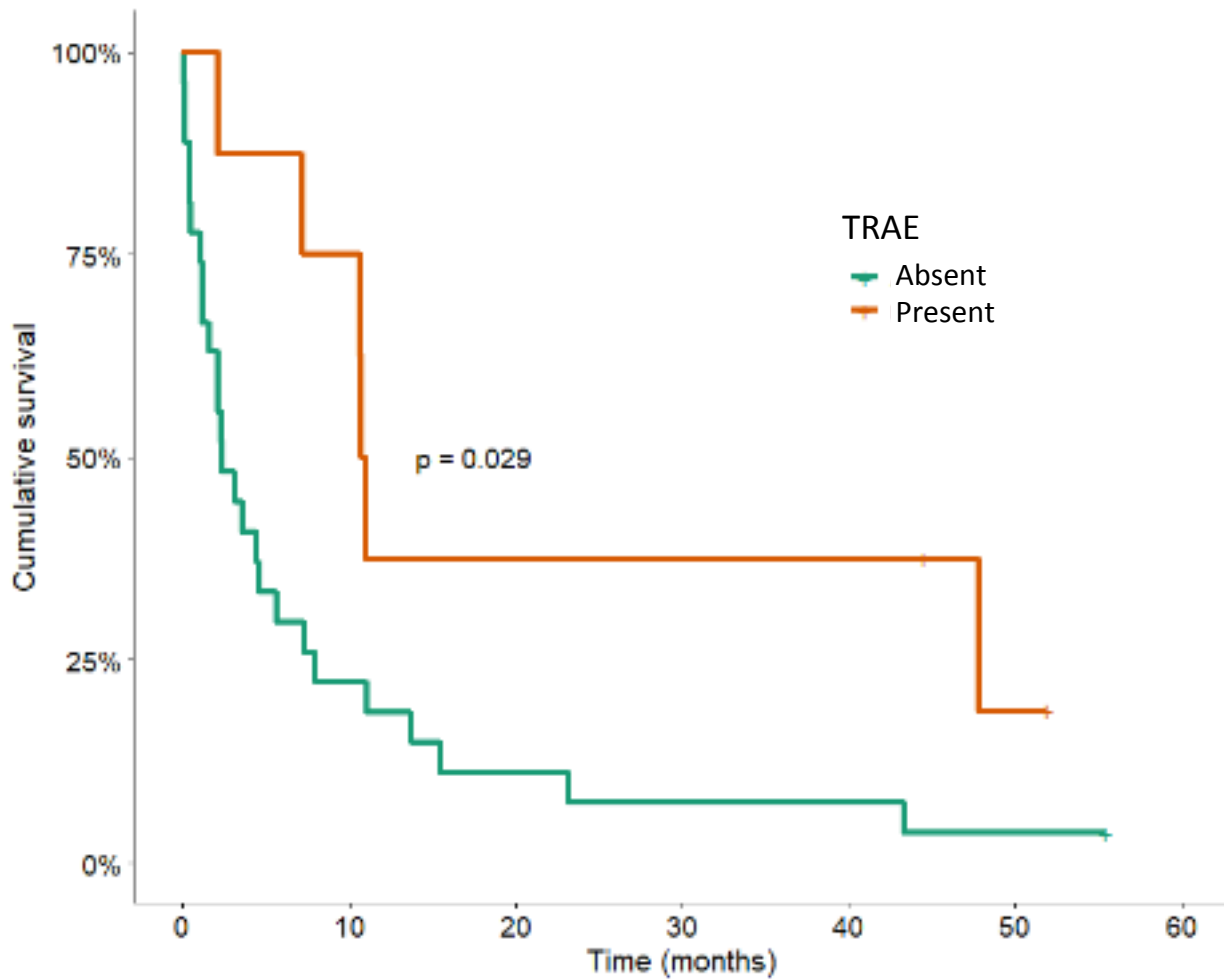


Number at risk

Response to nivolumab	0	10	20	30	40	50	60
PR	11	9	6	5	5	2	0
SD	5	2	0	0	0	0	0
PD	10	1	0	0	0	0	0

Time (months)



Number at risk

TRAE	0	10	20	30	40	50	60
Absent	27	6	3	2	2	1	0
Present	8	6	3	3	3	1	0

Time (months)

Supplementary Data Table 1. Overall Response Rate by PD-L1 Status

	Patients		PD-L1 status (TPS)				p
	N = 34*		< 1%		≥ 1%		
	n	%	n	%	N	%	
Objective response	11	32	2	18	9	39	
No objective response†	23	68	9	82	14	61	

*In one case, tumor material was insufficient, and the analysis could thus not be performed.

†In the intent-to-treat series, no objective response included stable disease and progressive disease in evaluable tumors and non-evaluable tumors regardless of the cause.

PD-L1, programmed death ligand 1; TPS, tumor proportion score.

Variables	N	Univariable analysis					Multivariable analysis			
		Median OS (mo)	95% CI	HR	95% CI	p value (Log Rank)	Wald	aHR	95% CI	p value
* Age (years)	35									
< 65	16	5.7	0.4-11.0	-		0.092				
≥ 65	19	2.1	1.4-2.9	1.8	0.9-3.7					
Gender	35									
Female	12	7.2	0-15.9	-		0.729				
Male	23	3.6	0.4-6.8	1.1	0.6-2.4					
* Smoking status (PY)	34									
≥ 20	27	5.7	0.8-10.5	-		0.014	8.6	-	-	0.003
< 20	7	1.6	0-4.6	2.9	1.2-7.0			4.8	1.7-13.8	
Number of metastatic sites	34									
< 3	22	4.4	0-13.9	-		0.120				
≥ 3	12	3.6	0-7.7	1.8	0.9-3.9					
* Liver metastasis	34									
No	25	7.3	1.7-12.9	-		0.047				
Yes	9	2.1	0.5-3.8	2.2	1.0-5.1					
* Brain metastasis	34									
No	24	8.0	0.4-15.6	-		0.003	10.4	-	-	0.001
Yes	10	2.1	0.6-3.6	3.5	1.5-8.5			5.2	1.9-14.3	
Histological type	35									
Adenocarcinoma	23	4.6	0.7-8.5	-						
Squamous cell carcinoma	7	3.6	0.4-6.9	0.9	0.4-2.1	0.947				
Other	5	0.5	0.3-0.7	1.0	0.3-2.8					
PD-L1 status (TPS)	34									
≥ 50	14	4.6	0-9.2	-						
1-49	9	7.2	0-22.1	1.3	0.5-3.1	0.673				
0	11	2.3	0.7-4.0	1.5	0.6-3.3					
KRAS mutation	32									
Yes	8	7.3	0-14.6	-		0.223				
No	24	2.3	0.5-4.1	1.7	0.7-4.0					
First-line therapy	35									
Chemotherapy (platinum doublet)	29	4.6	0.9-8.2	-		0.230				
ICI (Single anti-PD1, Nivolumab)	6	0.5	0-2.8	1.7	0.7-4.3					
PS before nivolumab initiation	35									
3	29	4.4	1.9-6.9	-		0.941				
4	6	1.1	0-9.3	1.0	0.4-2.7					
Best PS under nivolumab	35									
0	5	NR	-	-						
1	4	23.2	0-60.2	2.7	0.5-15.1					
2	5	7.3	7.1-7.5	8.3	1.3-53.4	< 10⁻⁶				
3	19	2.1	1.3-2.9	23.0	4.1-128.6					
4	2	0.1	-	201.5	17.1-2370.2					
Response to nivolumab	35									
Partial response	11	23.2	0-58.2	-						
Stable disease	5	8.0	6.2-9.8	3.8	1.1-13.6					
Progressive disease	10	2.3	0.6-4.0	8.7	2.8-26.6	< 10⁻⁷				
Not evaluable	9	0.4	0.3-0.5	60.5	13.8-264.6					
Immune-related adverse events	35									
No	27	2.3	0.6-4.1	-						
Yes	8	10.7	10.3-11.2	0.4	0.2-0.9	0.029				

Supplementary Table 2. Detailed univariable (Kaplan-Meier) and multivariable analysis (Cox proportional hazards) results.

* variable introduced in multivariable analysis

OS, overall survival

95% CI, 95% confidence interval

HR, hazard ratio

aHR, adjusted hazard ratio

NR, not reached

PY, pack-years

PD-L1, programmed death ligand 1

TPS, tumor proportion score

KRAS, Kirsten rat sarcoma oncogene

PS, Performance status

NSCLC, non-small cell lung cancer