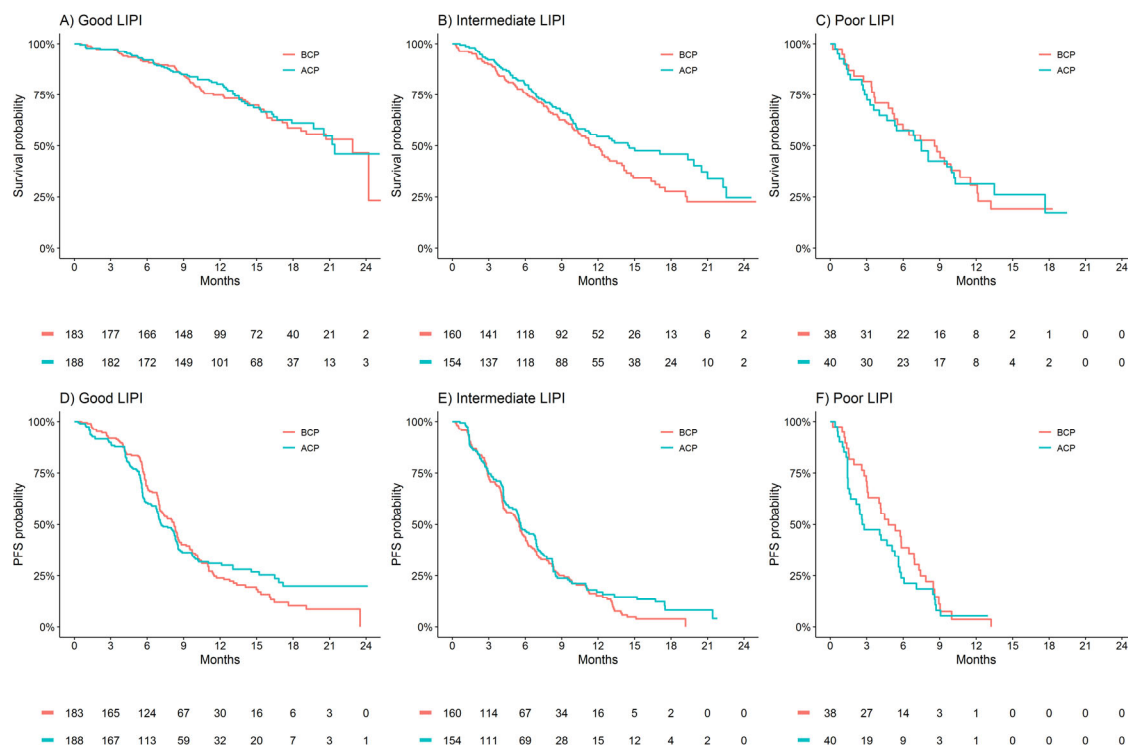


# Supplementary Material: Value of the Lung Immune Prognostic Index in Patients with Non-Small Cell Lung Cancer Initiating First-Line Atezolizumab Combination Therapy: Subgroup Analysis of the IMPOWER150 Trial

Ashley M. Hopkins, Ganessan Kichenadasse, Ahmad Y. Abuhelwa, Ross A. McKinnon, Andrew Rowland and Michael J. Sorich



**Figure S1.** Kaplan Meier estimates of overall survival and progression-free survival in the randomized arms of IM-power150 (ACP versus BCP), subgrouped by LIPI.

**Table S1.** Summary of patient characteristics by study arm.

Patient Characteristics	BCP No. 400	ACP No. 402	ABCP No. 400	<i>P</i>
Evaluable pts	381	382	385	
Age (years)	63 (57–69)	63 (57–68)	63 (57–70)	0.54
Sex				1
Male	239 (60%)	241 (60%)	240 (60%)	
Female	161 (40%)	161 (40%)	160 (40%)	
ECOG PS				0.28
0	179 (45%)	180 (45%)	159 (40%)	
1	218 (55%)	222 (55%)	238 (60%)	
Missing	3 (1%)	0 (0%)	3 (1%)	
Race				0.77
White	335 (84%)	331 (82%)	322 (80%)	

Asian	46 (12%)	48 (12%)	56 (14%)	
Other/Missing	19 (5%)	23 (6%)	22 (6%)	
Smoking history				0.96
Never	77 (19%)	77 (19%)	82 (20%)	
Previous	231 (58%)	227 (56%)	228 (57%)	
Current	92 (23%)	98 (24%)	90 (22%)	
Liver metastases	57 (14%)	53 (13%)	53 (13%)	0.89
Non-squamous histologic subtype				0.81
Adenocarcinoma	377 (94%)	383 (95%)	378 (94%)	
Other	17 (4%)	15 (4%)	19 (5%)	
Unknown or not assessed	6 (2%)	4 (1%)	3 (1%)	
PD-L1 expression #				1
TC0/1/2 and IC0/1	301 (75%)	304 (76%)	299 (75%)	
TC0/1/2 and IC2/3	50 (12%)	51 (13%)	53 (13%)	
TC3 and any IC	49 (12%)	47 (12%)	48 (12%)	
Teff $\geq -1.91$ *				0.17
Yes	148 (37%)	177 (44%)	166 (42%)	
No	231 (58%)	210 (52%)	217 (54%)	
Missing	21 (5%)	15 (4%)	17 (4%)	
EGFR mutation status				0.41
Negative	345 (86%)	347 (86%)	352 (88%)	
Positive	45 (11%)	46 (11%)	35 (9%)	
Missing	10 (2%)	9 (2%)	13 (3%)	
Derived neutrophil to lymphocyte ratio				0.097
Median (IQR)	2.2 (1.6–2.9)	2.1 (1.6–3.0)	2.3 (1.7–3.0)	
Missing	10 (2.5%)	4 (1.0%)	8 (2.0%)	
Lactate Dehydrogenase (U/L)				0.7
Median (IQR)	234 (184–318)	233 (185–346)	227 (181–327)	
Missing	17 (4%)	19 (5%)	15 (4%)	
Lung Immune Prognostic Index				0.91
Good LIPI	183 (46%)	188 (47%)	177 (44%)	
Intermediate LIPI	160 (40%)	154 (38%)	165 (41%)	
Poor LIPI	38 (10%)	40 (10%)	43 (11%)	
Missing	19 (5%)	20 (5%)	15 (4%)	

Data are median (IQR) or number of patients (%). P values per Chi-Square test for categorical data and Kruskal-Wallis test for continuous data. # Assessed by immunohistochemical analysis. Tumour cell (TC) or tumour-infiltrating immune cell (IC) group levels (TC PDL-L1 expression on <1% [TC0] or  $\geq 1\%$  to <5% [TC1] or  $\geq 5\%$  to <50% [TC2] or  $\geq 50\%$  [TC3]; IC PDL-L1 expression on <1% [IC0] or  $\geq 1\%$  to <5% [IC1] or  $\geq 5\%$  to <10% [IC2] or  $\geq 10\%$  [IC3]). \* effector T-cell gene signature score (Teff; high  $\geq -1.91$  versus low  $< -1.91$ ) derived from the average mRNA expression of PD-L1, CXCL9 and IFN $\gamma$  relative to a reference gene).

**Table S2.** Summary of patient characteristics by LIPI group.

Patient Characteristics	Good LIPI No. 548	Intermediate LIPI No. 479	Poor LIPI No. 121	P
Treatment arm				0.91
BCP	183 (33%)	160 (33%)	38 (31%)	
ACP	188 (34%)	154 (32%)	40 (33%)	
ABCP	177 (32%)	165 (34%)	43 (36%)	
Age (years)	63 (57–70)	63 (57–68)	63 (58–69)	0.7
Sex				0.65
Male	333 (61%)	288 (60%)	68 (56%)	
Female	215 (39%)	191 (40%)	53 (44%)	
ECOG PS				<0.001
0	268 (49%)	191 (40%)	40 (33%)	
1	275 (50%)	287 (60%)	81 (67%)	
Missing	5 (1%)	1 (<1%)	0 (0%)	

Race				0.67
White	448 (82%)	400 (84%)	95 (79%)	
Asian	72 (13%)	57 (12%)	17 (14%)	
Other/Missing	28 (5%)	22 (5%)	9 (7%)	
Smoking history				0.78
Never	116 (21%)	91 (19%)	22 (18%)	
Previous	310 (57%)	271 (57%)	73 (60%)	
Current	122 (22%)	117 (24%)	26 (21%)	
Liver metastases	48 (9%)	81 (17%)	24 (20%)	<0.001
Non-squamous histologic subtype				0.26
Adenocarcinoma	525 (96%)	450 (94%)	113 (93%)	
Other	19 (3%)	25 (5%)	5 (4%)	
Unknown or not assessed	4 (1%)	4 (1%)	3 (2%)	
PD-L1 expression #				0.56
TC0/1/2 and IC0/1	401 (73%)	367 (77%)	94 (78%)	
TC0/1/2 and IC2/3	79 (14%)	56 (12%)	12 (10%)	
TC3 and any IC	68 (12%)	56 (12%)	15 (12%)	
Teff $\geq -1.91$ *				0.97
Yes	225 (41%)	198 (41%)	49 (40%)	
No	297 (54%)	263 (55%)	68 (56%)	
Missing	26 (5%)	18 (4%)	4 (3%)	
EGFR mutation status				0.36
Negative	472 (86%)	421 (88%)	106 (88%)	
Positive	65 (12%)	44 (9%)	11 (9%)	
Missing	11 (2%)	14 (3%)	4 (3%)	
Derived neutrophil to lymphocyte ratio	1.9 (1.5–2.3)	2.5 (1.8–3.3)	4.0 (3.4–5.7)	<0.001
Lactate Dehydrogenase (U/L)	193 (166–227)	280 (212–412)	306 (260–445)	<0.001

Data are median (IQR) or number of patients (%). P values per Chi-Square test for categorical data and Kruskal-Wallis test for continuous data. # Assessed by immunohistochemical analysis. Tumour cell (TC) or tumour-infiltrating immune cell (IC) group levels (TC PDL-L1 expression on <1% [TC0] or  $\geq 1\%$  to <5% [TC1] or  $\geq 5\%$  to <50% [TC2] or  $\geq 50\%$  [TC3]; IC PDL-L1 expression on <1% [IC0] or  $\geq 1\%$  to <5% [IC1] or  $\geq 5\%$  to <10% [IC2] or  $\geq 10\%$  [IC3]). \* effector T-cell gene signature score (Teff; high [ $\geq -1.91$ ] versus low [ $< -1.91$ ] derived from the average mRNA expression of PD-L1, CXCL9 and IFN $\gamma$  relative to a reference gene).

**Table 3.** Association (adjusted) between LIPI and survival outcomes for patients randomized with ABCP or ACP.

Treatment Arm/Risk Group	OS		PFS	
	HR [95% CI]	P	HR [95% CI]	P
ABCP		<0.001		<0.001
Good LIPI ( <i>n</i> = 163)	1.00		1.00	
Intermediate LIPI ( <i>n</i> = 153)	2.12 [1.40–3.19]		1.34 [0.99–1.81]	
Poor LIPI ( <i>n</i> = 40)	7.11 [4.05–12.5]		3.28 [2.11–5.11]	
ACP		<0.001		<0.001
Good LIPI ( <i>n</i> = 172)	1.00		1.00	
Intermediate LIPI ( <i>n</i> = 149)	1.71 [1.18–2.48]		1.51 [1.16–1.97]	
Poor LIPI ( <i>n</i> = 39)	4.81 [2.90–7.97]		2.91 [1.95–4.35]	

CI = confidence interval, HR = hazard ratio, PFS = progression free survival, OS = overall survival; Analyses stratified by sex, PD-L1 expression, and presence of liver metastases; Regression adjusted for age, ECOG PS, race, smoking status, histology, Teff, and EGFR mutation status.