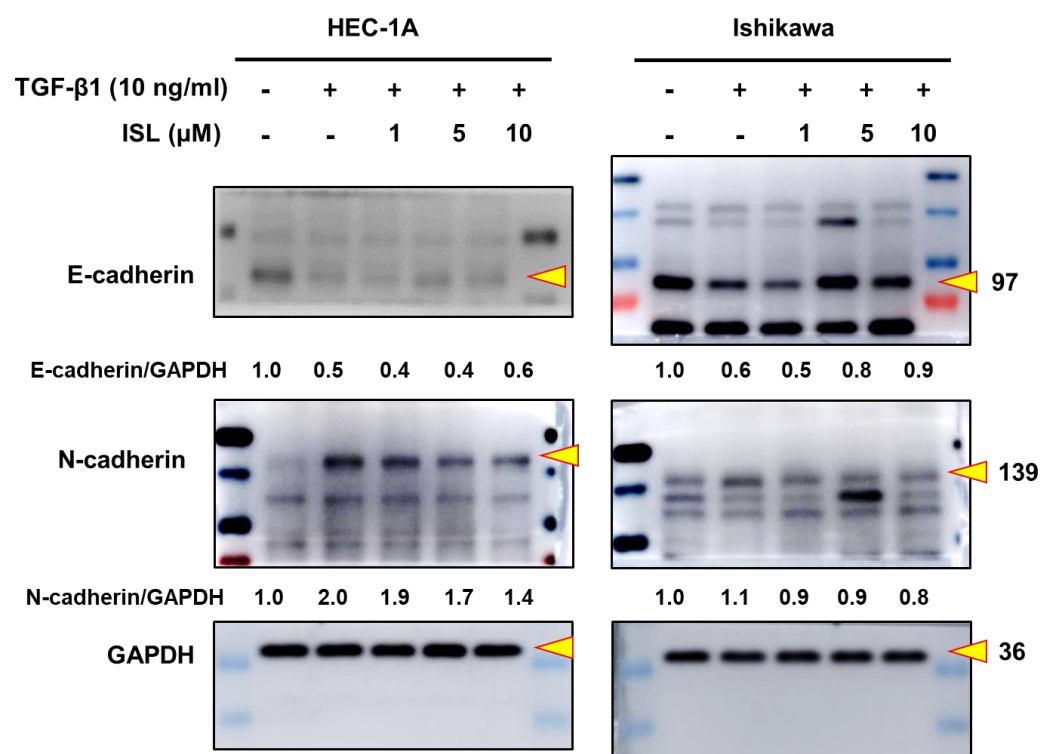
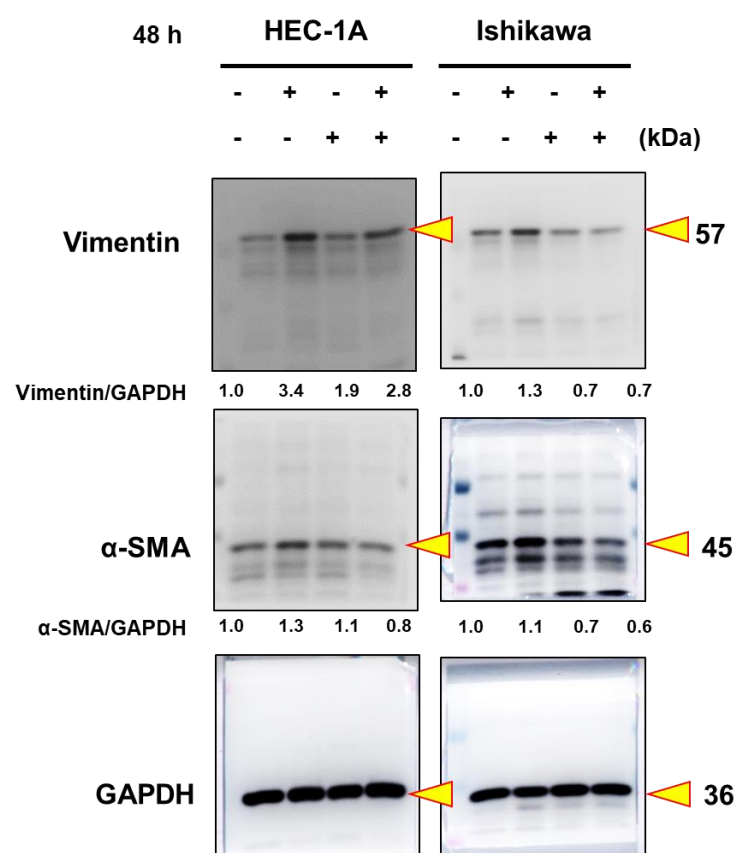


Isoliquiritigenin Restrains Epithelial-Mesenchymal Transition in Endometrial Cancer Cells via the TGF- β /Smad Signaling Pathways

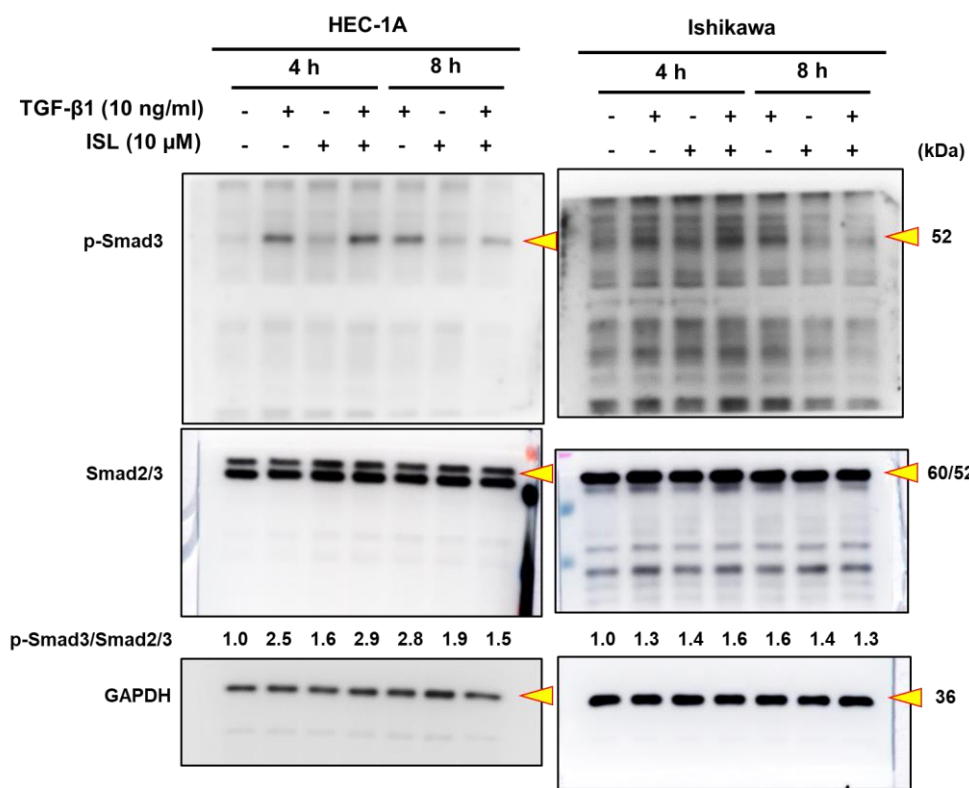
--Supplementary Figure S1 – S3



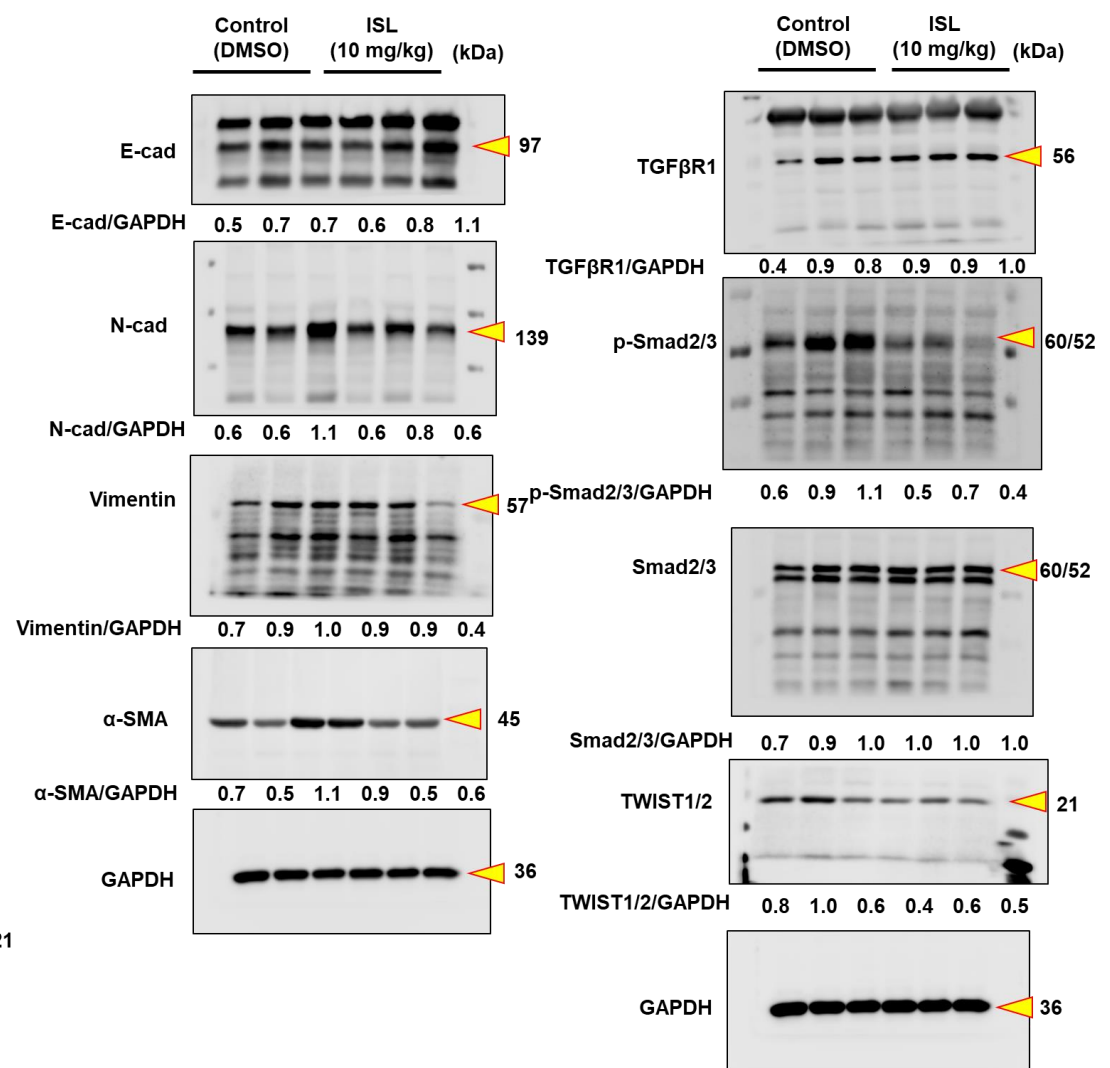
(a)



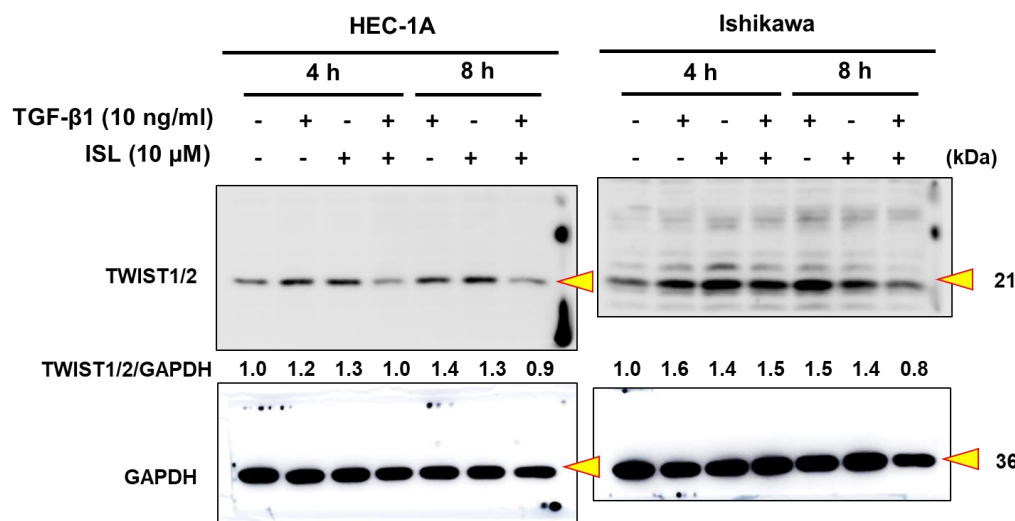
(b)



(c)

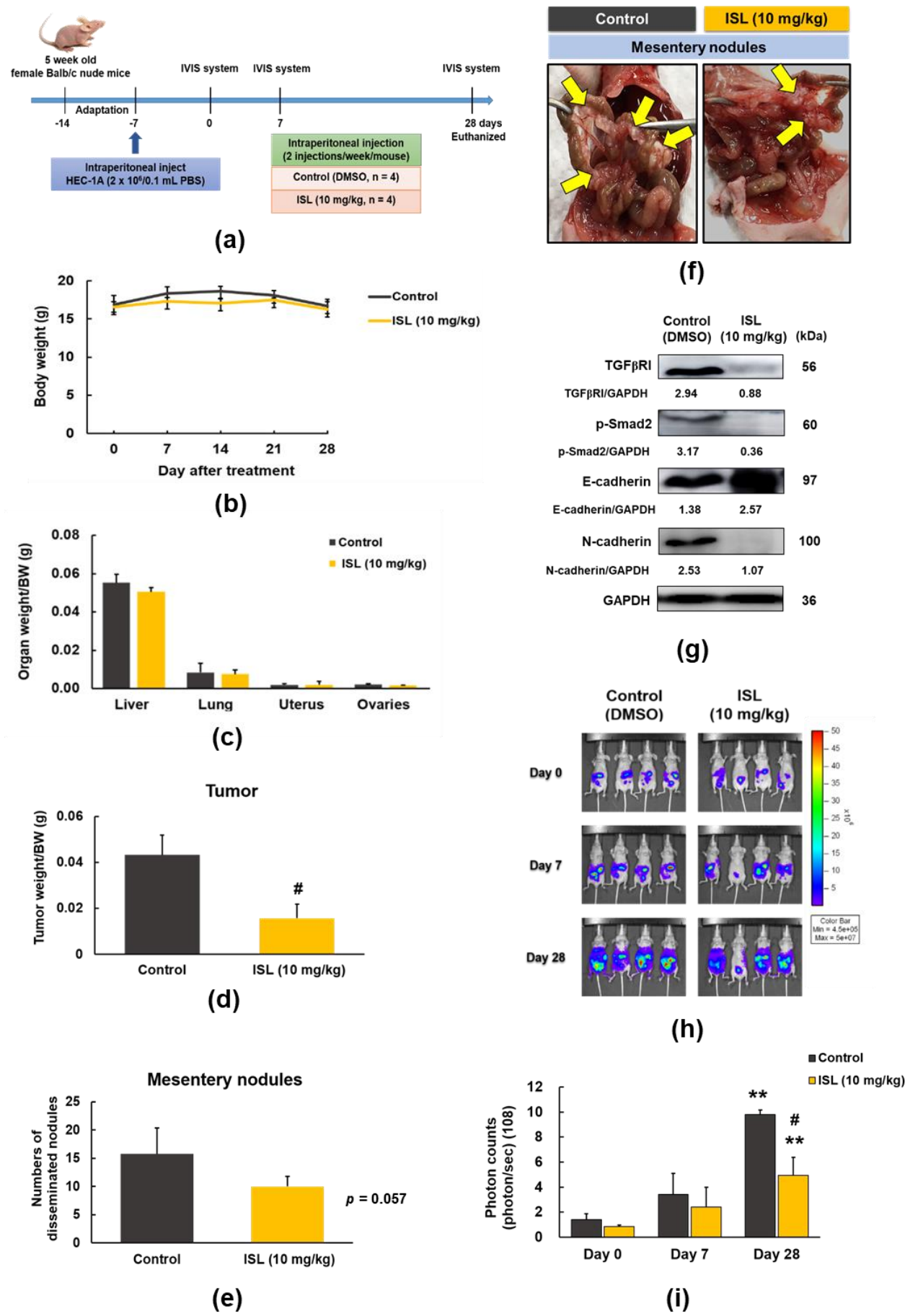


(e)

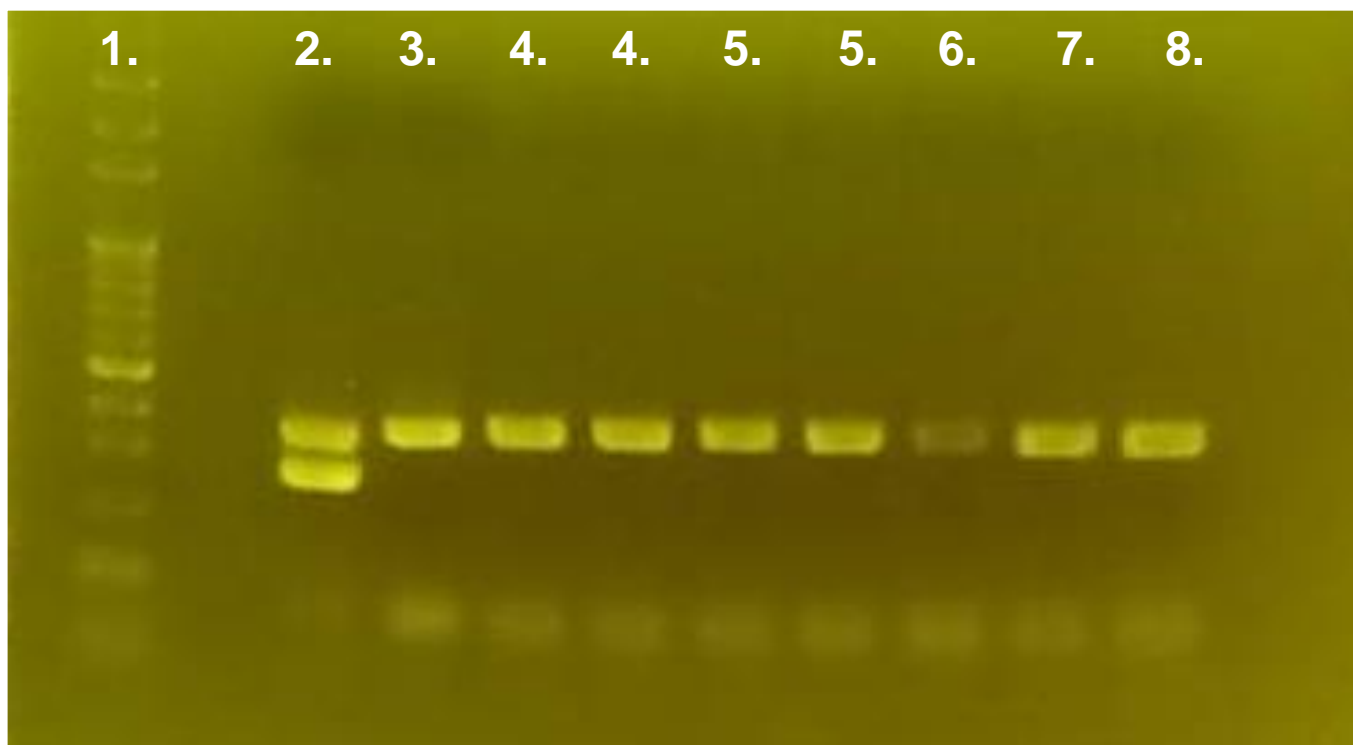


(d)

Supplementary Figure S1. The raw data of western blotting.



Supplementary Figure S2. The raw data of animal pre-experiment.



Supplementary Figure S3. The raw data of mycoplasma test. 1. Marker, 2. Positive control, 3. Negative control, 4. HEC-1A cells, 5. Ishikawa cells, 6. ELT-3 cells, 7. HaCaT cells, 8. RIN-m5F cells.