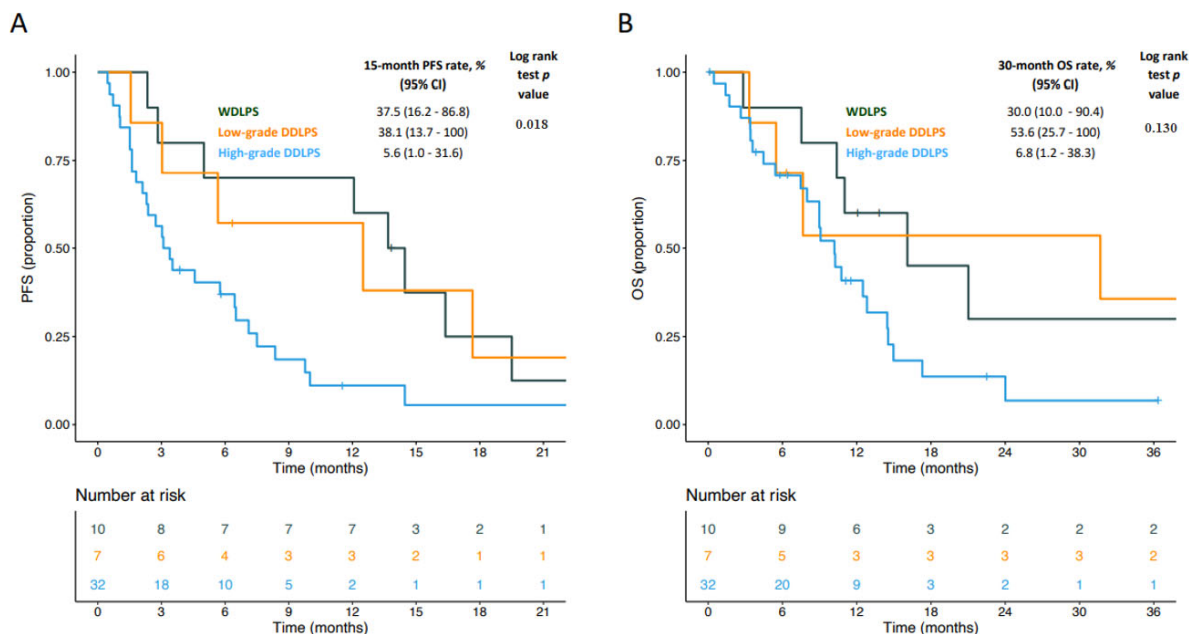
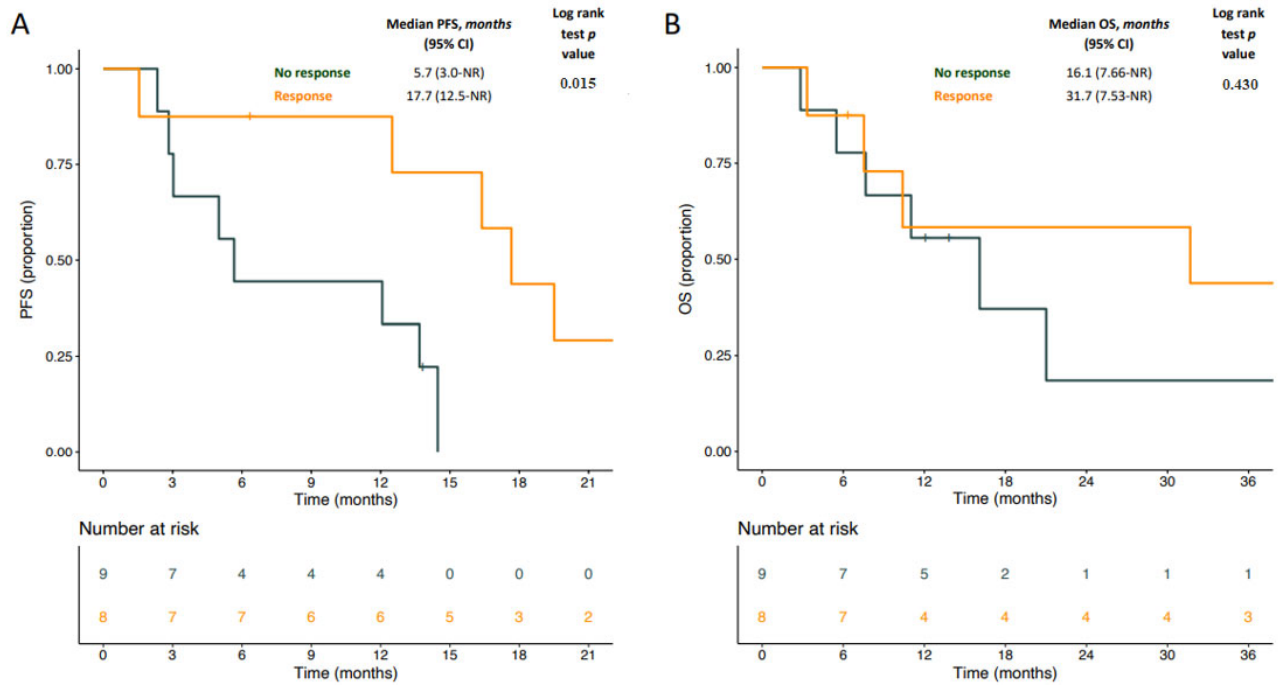


# Supplementary Materials: Impact of Pathological Stratification on the Clinical Outcomes of Advanced Well-Differentiated/Dedifferentiated Liposarcoma Treated with Trabectedin

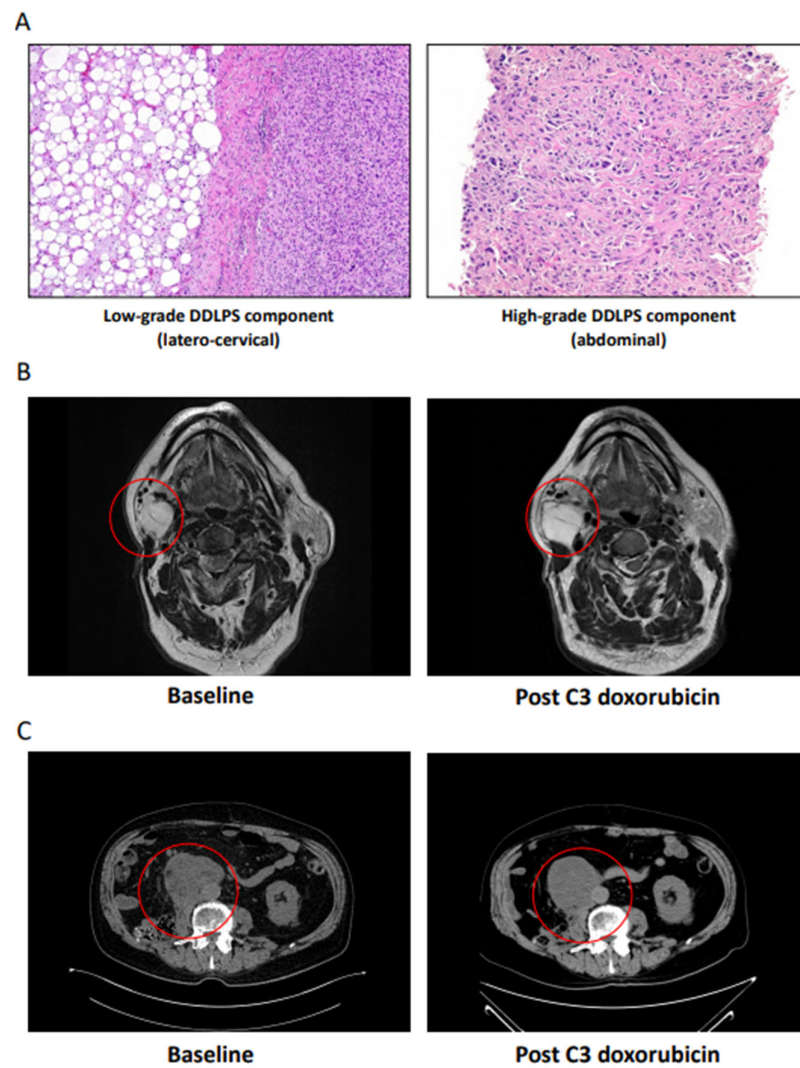
Chiara Fabbri, Giovanni Fucà, Francesca Ligorio, Elena Fumagalli, Marta Barisella, Paola Collini, Carlo Morosi, Alessandro Gronchi, Angelo Paolo Dei Tos, Paolo Giovanni Casali and Roberta Sanfilippo



**Figure S1.** Kaplan–Meier curves for progression-free survival (PFS) (A) and OS (B) for well differentiated liposarcoma (WDLPS), low-grade dedifferentiated liposarcoma (DDLPS), and high-grade DDLPS. Dark green lines indicate patients with WDLPS, orange lines indicate patients with low-grade DDLPS, and light blue lines indicate patients with high-grade DDLPS.



**Figure S2.** Kaplan–Meier curves for PFS (A) and overall survival (OS) (B) in the low-grade cohort according to overall response to trabectedin. Dark green lines indicate patients who did not achieve a tumor response, whereas orange lines indicate patients who achieved a tumor response.



**Figure S3.** Histological characterization and response to doxorubicin in a patient with double DDLPS component. (A) shows the hematoxylin and eosin stain of tumor samples from the low-grade DDLPS laterocervical localization and from the high-grade DDLPS abdominal localization. (B) (T2 weighted magnetic resonance imaging) and (C) (computerized tomography scan) show the RECIST tumor response of the low-grade, laterocervical component and of the high-grade, abdominal component, respectively.

**Table S1.** Cox proportional hazard regression models for OS.

Characteristics.	Univariate analysis		Multivariable Model	
	HR (95% CI)	<i>p</i> -Value	HR (95% CI)	<i>p</i> -Value
<b>Age, year</b>	Ref			
≤65	0.38 (0.18–0.79)	0.010	-	-
>65				
<b>Sex</b>	Ref			
Male	0.78 (0.39–1.55)	0.480	-	-
Female				
<b>ECOG PS</b>	Ref			
0	1.13 (0.56–2.29)	0.730	-	-
1–2				
<b>Disease extension</b>	Ref			
Locally advanced	0.96 (0.48–1.90)	0.889	-	-
Metastatic				
<b>Primary site</b>	Ref			
Retroperitoneal	2.71 (0.80–9.17)	0.110	-	-
Other				
<b>Previous lines of treatment, <i>n</i></b>	Ref			
≤2	1.29 (0.63–2.63)	0.493	-	-
>2				
<b>Grading</b>	Ref		Ref	
High grade cohort	0.46 (0.22–0.99)	0.048	0.55 (0.25–1.19)	0.126
Low-grade cohort				

Abbreviations. HR: hazard ratio; CI: confidence interval; Ref: reference; ECOG PS: Eastern Cooperative Oncology Group Performance Status.