

Supplementary

High-Grade B-Cell Lymphoma (HGBL) with *MYC* and *BCL2* and/or *BCL6* Rearrangements Is Predominantly *BCL6*-Rearranged and *BCL6*-Expressing in Taiwan

Cheng-Chih Tsai et al.

Citation: Tsai, C.-C.; Su, Y.-C.; Bamodu, O.A.; Chen, B.-J.; Tsai, W.-C.; Cheng, W.-H.; Lee, C.-H.; Hsieh, S.-M.; Liu, M.-L.; Fang, C.-L.; et al. High-Grade B-Cell Lymphoma (HGBL) with *MYC* and *BCL2* and/or *BCL6* Rearrangements Is Predominantly *BCL6*-Rearranged and *BCL6*-Expressing in Taiwan. *Cancers* **2021**, *13*, 1620. <https://doi.org/10.3390/cancers13071620>

Academic Editor: Alexey Ushmorov;
Chalid Assaf

Received: 15 January 2021

Accepted: 26 March 2021

Published: 31 March 2021

Publisher's Note: MDPI stays neutral with regard to jurisdictional claims in published maps and institutional affiliations.



Copyright: © 2021 by the author. Licensee MDPI, Basel, Switzerland. This article is an open access article distributed under the terms and conditions of the Creative Commons Attribution (CC BY) license (<http://creativecommons.org/licenses/by/4.0/>).

Number of cases			Variable - Outcome analysis		
BCL6-rearrangement			BCL6-rearrangement		
	n (%)		Chi-squared	5.7918	
0	6 (31.6%)		p-value	0.02	
1	13 (68.4%)		Hazard ratios with 95% Confidence Interval		
			Factor	0	1
			0	-	0.2659 (0.04496 to 1.5720)
			1	3.7613 (0.6361 to 22.2400)	-
BCL2-rearrangement			BCL2-rearrangement		
	n (%)		Chi-squared	0.4977	
0	9 (47.4%)		p-value	0.48	
1	10 (52.6%)		Hazard ratios with 95% Confidence Interval		
			Factor	0	1
			0	-	1.4605 (0.4831 to 4.4155)
			1	0.6847 (0.2265 to 2.0701)	-
BCL6*BCL2					
BCL6-rearrangement	BCL2-rearrangement	n (%)			
0	0	0 (0.0%)			
	1	6 (31.6%)			
1	0	9 (47.4%)			
	1	4 (21.0%)			

Table S1. Extranodal involvement.

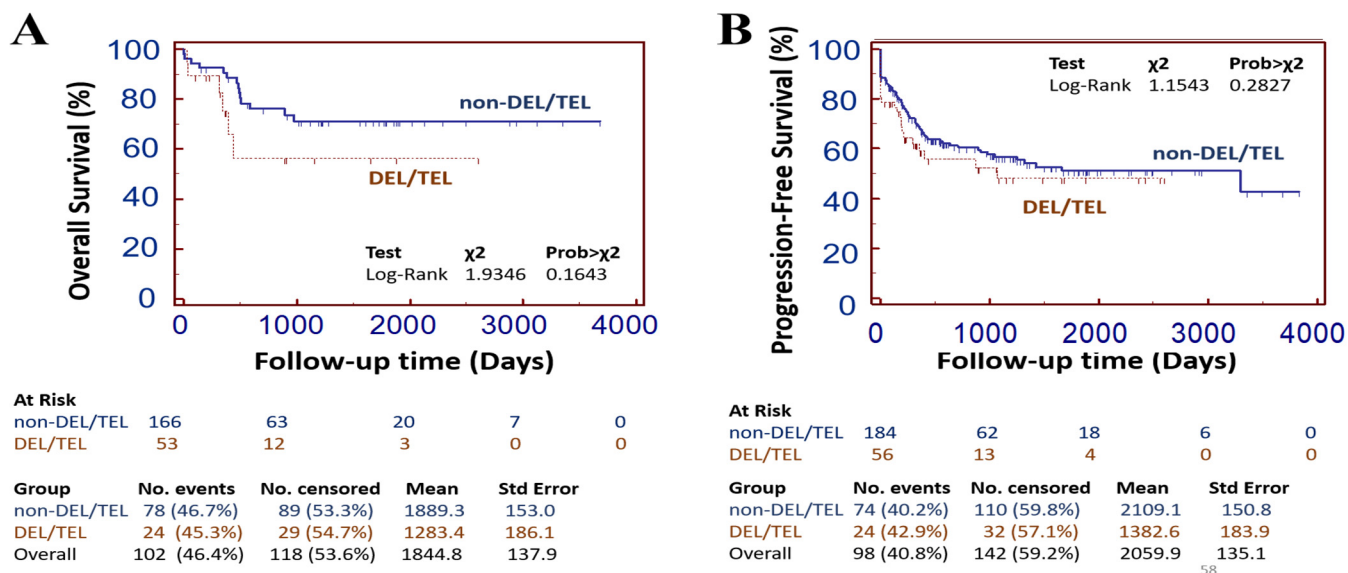


Figure S1. Multi-gene expression (DEL/TEL) confer poor prognosis. Kaplan-Meier curves showing the differential effect of DEL/TEL or non-DEL/TEL on the (A) overall or (B) progression-free survival of our DLBCL cohort ($n = 282$). DHL, double hit lymphoma; THL, triple hit lymphoma; DEL, double expressor lymphoma; TEL, triple expressor lymphoma; χ^2 , chi-square.

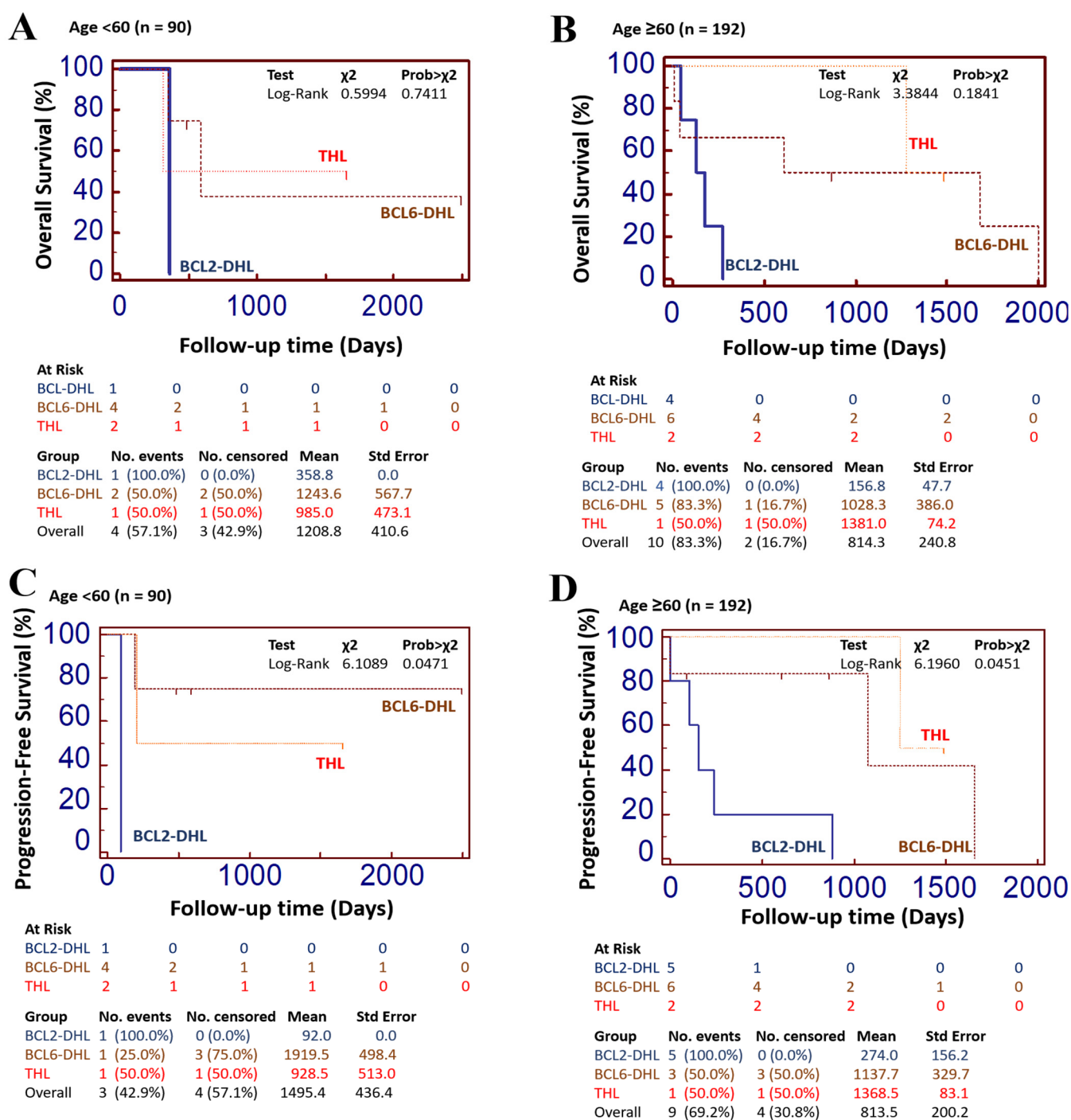


Figure S2. Age-adjusted survival analysis. Kaplan-Meier curves showing the differential effect of BCL2-DHL, BCL6-DHL or THL on the overall survival of our DLBCL cohort ($n = 282$) (A) younger than, or (B) older than 60 years. Kaplan-Meier curves showing the differential effect of BCL2-DHL, BCL6-DHL or THL on the Progression-free survival of our DLBCL cohort ($n = 282$) (C) younger than, or (D) older than 60 years. DHL, double hit lymphoma; THL, triple hit lymphoma; χ^2 , chi-square.