

# Supplementary materials: Clinical Activity of an hTERT-Specific Cancer Vaccine (Vx-001) in “Immune Desert” NSCLC

I. S. Pateras, A. Kotsakis, M. Avgeris, E. Baliou, P. Kouroupakis, E. Patsea, V. Georgoulas, J. Menez-Jamet, J. P. Kinet and Kostas Kosmatopoulos

**Table S1.** Correlation of TAIC with CD3- and CD8- TILs.

Tumor-associated immune cells (TAIC)			
Covariant	Low	High	<i>p</i> -value <sup>a</sup>
<b>CD3-TILs</b>			
Low	30 <sup>b</sup> (68.2% <sup>c</sup> )	15 (24.6%)	<0.001
High	14 (31.8%)	46 (75.4%)	
<b>CD8-TILs</b>			
Low	29 (65.9%)	13 (22.8%)	<0.001
High	15 (34.1%)	44 (77.2%)	

<sup>a</sup> Fisher’s Exact test. <sup>b</sup> Number of patients. <sup>c</sup> % percentage within TAIC.

**Table S2.** Correlation of PD-L1, TAIC, CD3- TILs, CD8-TILs and GZMB-TILs with patients’ clinicopathological data.

Covariant	Gender		<i>p</i> <sup>a</sup>	Age		<i>p</i> <sup>a</sup>	Prior treatment response			Histology		<i>p</i> <sup>a</sup>	Smoking		<i>p</i> <sup>a</sup>	
	Male	Female		<65y	≥65y		OR <sup>d</sup>	SD <sup>e</sup>	<i>p</i> <sup>a</sup>	NSQ/M H <sup>f</sup>	SQ <sup>g</sup>		No	Yes		
<b>PD-L1</b>	75 <sup>b</sup>	26	0.486	48	53	0.838	46	55	0.100	59	42	0.677	92	26	3	
Negative	(53.7% <sup>c</sup> )	(19.8%)		(36.6%)	(40.5%)		(35.1%)	(42.0%)		(45.0%)	(32.1%)		9 (6.9%)			(70.2%)
Positive	20 (15.3%)	10 (7.6%)		(11.5%)	(11.5%)		(14.5%)	11 (8.4%)		(12.2%)	(10.7%)		4 (3.1%)			(19.8%)
<b>TAIC</b>	40	20	0.176	32	28	0.296	31	29	0.727	35	25	0.861	54	64	1.000	
Low	(30.5%)	(15.3%)		(24.4%)	(21.4%)		(23.7%)	(22.1%)		(26.7%)	(19.1%)		6 (4.6%)			(41.2%)
High	55 (42.0%)	16 (12.2%)		(23.7%)	(30.5%)		(26.0%)	(28.2%)		(30.5%)	(23.7%)		7 (5.3%)			(48.9%)
<b>CD3-TILs</b>	35	10 (9.5%)	0.508	22	23	1.000	23	22	0.846	27	18	0.554	40	54	1.000	
Low	(33.3%)	(16.2%)		(21.0%)	(21.9%)		(21.9%)	(21.0%)		(25.7%)	(17.1%)		5 (4.8%)			(38.1%)
High	43 (41.0%)	17 (16.2%)		(28.6%)	(28.6%)		(30.5%)	(26.7%)		(30.5%)	(26.7%)		6 (5.7%)			(51.4%)
<b>CD8-TILs</b>	32	10 (9.9%)	0.506	21	21	0.842	22	20	0.549	23	19	0.842	37	54	0.738	
Low	(31.7%)	(17.8%)		(20.8%)	(20.8%)		(21.8%)	(19.8%)		(22.8%)	(18.8%)		5 (5.0%)			(36.6%)
High	41 (40.6%)	18 (17.8%)		(27.7%)	(30.7%)		(26.7%)	(31.7%)		(30.7%)	(27.7%)		5 (5.0%)			(53.5%)
<b>GZMB-TILs</b>	51	19	1.000	30	40	0.153	36	34	0.782	39	31	1.000	64	13	6	
Low	(60.0%)	(22.4%)		(35.3%)	(47.1%)		(42.4%)	(40.0%)		(45.9%)	(36.5%)		6 (7.1%)			(75.3%)
High	11 (12.9%)	4 (4.7%)		(11.8%)	5 (5.9%)		7 (8.2%)	8 (9.4%)		8 (9.4%)	7 (8.2%)		2 (2.4%)			(15.3%)

<sup>a</sup> Fisher’s Exact test, <sup>b</sup> Number of patients, <sup>c</sup> % percentage of total patients, <sup>d</sup> Optimal response, <sup>e</sup> Stable disease, <sup>f</sup> Non-squamous/mixed histology, <sup>g</sup> Squamous.

**Table S3.** Distribution of gender, age, response to previous treatment, tumor histology and smoking behaviour in Vx-001 and placebo-treated arms.

Covariant	Vaccination		p-value <sup>a</sup>
	Placebo	Vx-001	
<b>Gender</b>			
Male	51 <sup>b</sup> (38.9% <sup>c</sup> )	44 (33.6%)	0.560
Female	17 (13.0%)	19 (14.5%)	
<b>Age</b>			
<65y	32 (24.4%)	31 (23.7%)	0.862
≥65y	36 (27.5%)	32 (24.4%)	
<b>Response to previous treatment</b>			
OR <sup>d</sup>	38 (29.0%)	27 (20.6%)	0.163
SD <sup>e</sup>	30 (22.9%)	36 (27.5%)	
<b>Histology</b>			
NSQ/MH <sup>f</sup>	41 (31.3%)	34 (26.0%)	0.485
SQ <sup>g</sup>	27 (20.6%)	29 (22.1%)	
<b>Smoking</b>			
No	7 (5.3%)	6 (4.6%)	1.000
Yes	61 (46.6%)	57 (43.5%)	

<sup>a</sup> Fisher's Exact test, <sup>b</sup> Number of patients, <sup>c</sup> % percentage of total patients, <sup>d</sup> Optimal response, <sup>e</sup> Stable disease, <sup>f</sup> non-squamous/mixed histology, <sup>g</sup> squamous.

**Table S4.** OS in patients with PD-L1(+), TAIC high, CD3-TIL high, CD8-TIL high or GZMB-TIL high tumors.

Patients	OS (months)		HR <sup>a</sup>	95% CI <sup>b</sup>	log-rank p value
	Placebo	Vx-001			
PD-L1(+) (n=30)	24.9	7.9	1.646	0.647-4.186	0.291
TAIC high (n=71)	16.3	14.3	1.463	0.850-2.517	0.166
CD3-TIL high (n=60)	16.3	10.0	1.599	0.895-2.856	0.109
CD8-TIL high (n=59)	16.3	12.7	1.501	0.832-2.709	0.174
GZMB-TIL high (n=15)	21.0	4.6	3.751	1.022-13.77	0.034

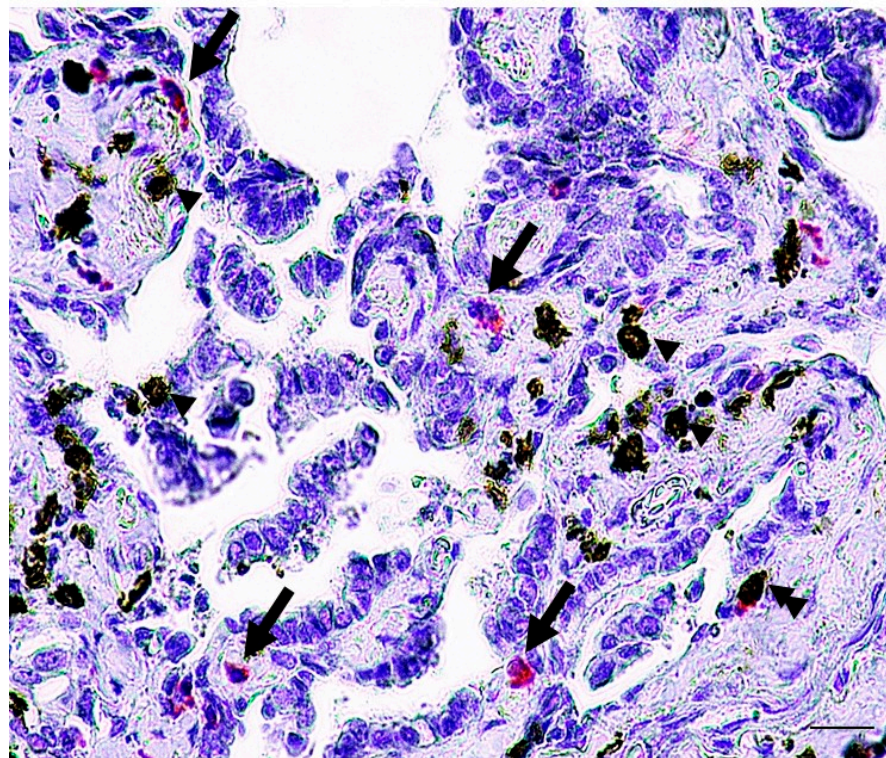
<sup>a</sup> Hazard Ratio, <sup>b</sup> 95% confidence interval of the estimated HR.

**Table S5.** TTF in patients with PD-L1(+), TAIC high, CD3-TIL high, CD8-TIL high or GZMB-TIL high tumors.

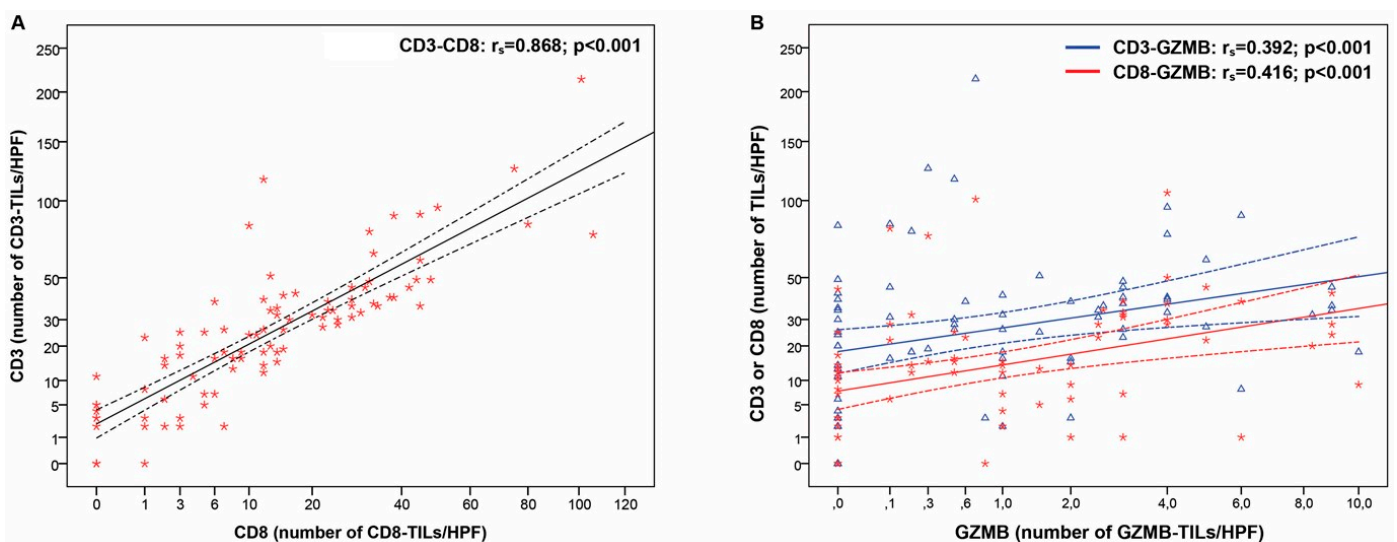
Patients	TTF (months)		HR <sup>a</sup>	95% CI <sup>b</sup>	log-rank p value
	Placebo	Vx-001			
PD-L1(+) (n=30)	3.0	3.5	1.344	0.615-2.934	0.437
TAIC high (n=71)	2.8	2.3	1.040	0.639-1.693	0.869
CD3-TIL high (n=60)	3.0	2.3	1.201	0.701-2.058	0.484
CD8-TIL high (n=59)	3.0	2.3	1.208	0.705-2.068	0.473
GZMB-TIL high (n=15)	2.8	2.0	1.043	0.362-3.005	0.936

<sup>a</sup> Hazard Ratio, <sup>b</sup> 95% confidence interval of the estimated HR.

## CD8/GZMB double staining



**Figure S1.** CD8-GZMB double staining. CD8 (brown, single arrowheads) – GZMB (red, single arrows). Double arrowhead depict CD8+GZMB+ cells. Scale bar: 20 $\mu$ m.



**Figure S2.** Correlation of CD3-TILs, CD8-TILs and GZMB-TILs. Scatter plots in power scale of (A) CD3-TILs and CD8-TILs and (B) GZMB-TILs with CD3-TILs (blue) or CD8-TILs (red). The  $p$  values are calculated by Spearman correlation analysis. The solid lines represent linear regression trendlines and dashed lines indicate 95% confidence intervals.  $r_s$ : Spearman correlation coefficient.

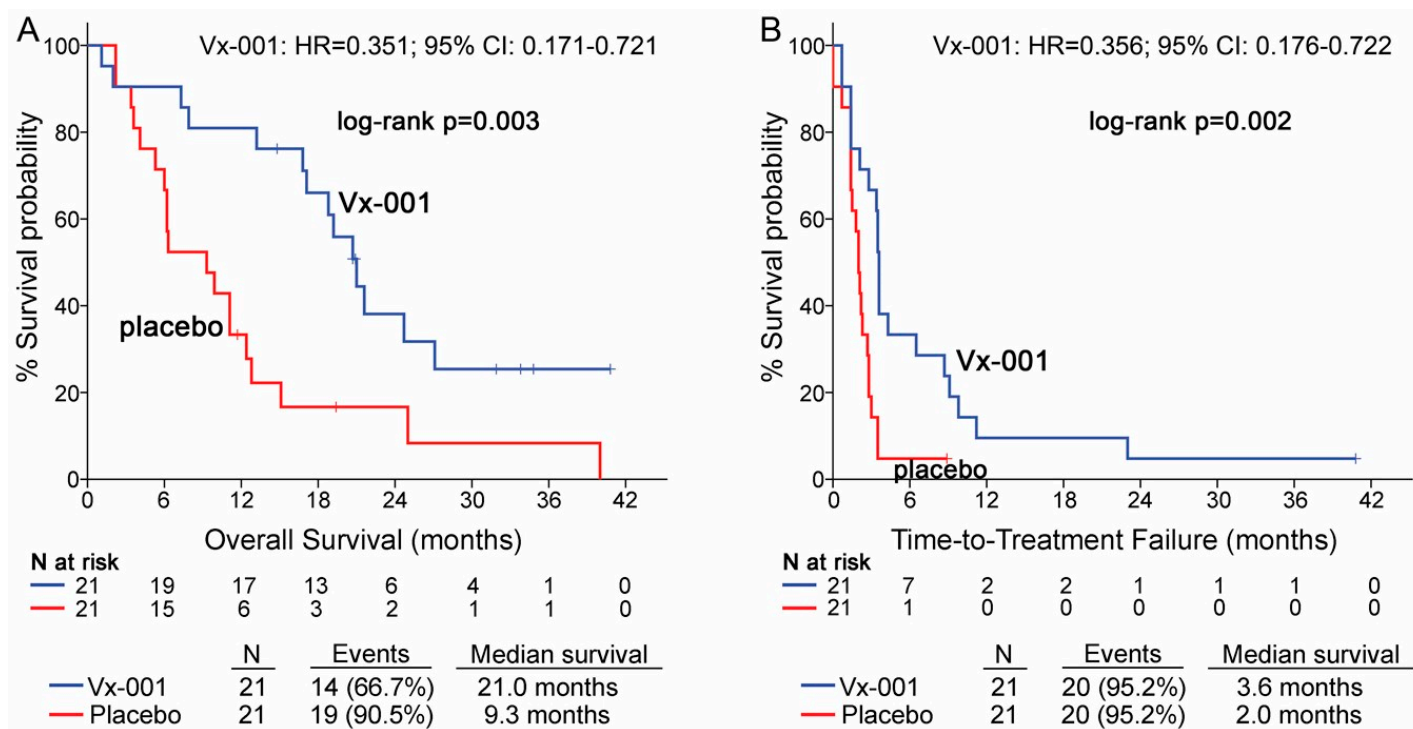


Figure S3. OS (A) and TTF (B) in patients with tumors lacking CD8-TIL/GZMB double positive cells.

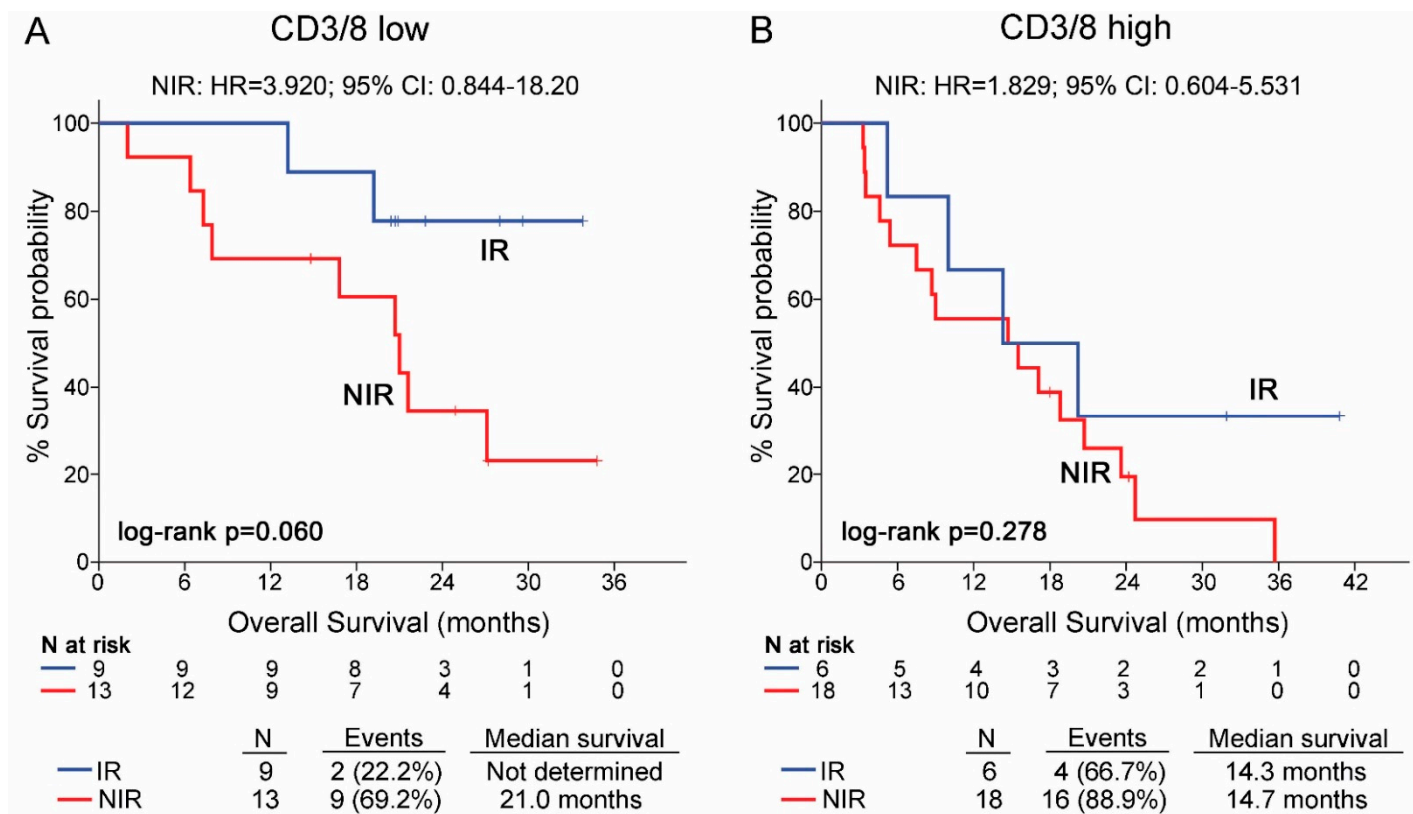


Figure S4. : Correlation of Vx-001 induced immune response and OS in patients with CD3/8-TIL low (A) and CD3/8-TIL high (B) tumors. IR: immune responders, NIR: Non immune responders.