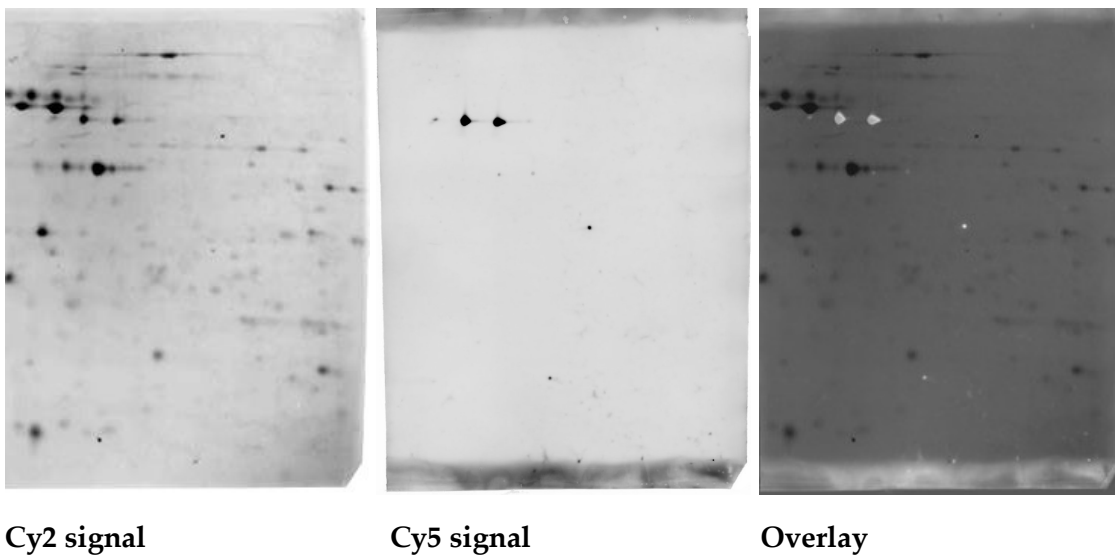


Supplementary Materials:

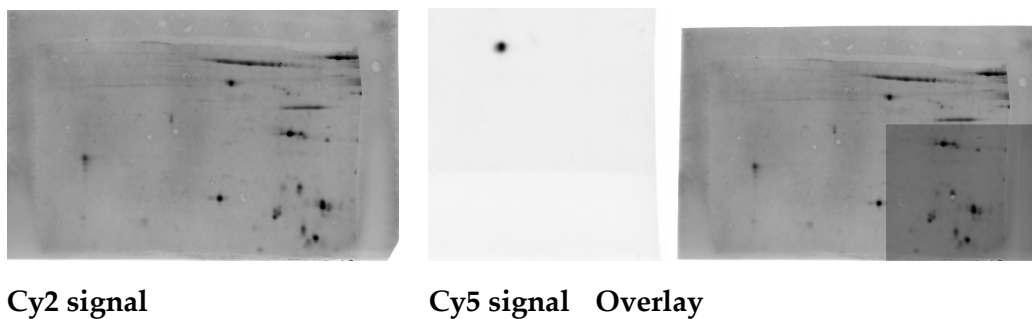
Alterations of the Platelet Proteome in Lung Cancer: Accelerated F13A1 and ER Processing As New Actors in Hypercoagulability

Huriye Ercan, Lisa-Marie Mauracher, Ella Grilz, Lena Hell, Roland Hellinger, Johannes A. Schmid, Florian Moik, Cihan Ay, Ingrid Pabinger, Maria Zellner

(a)

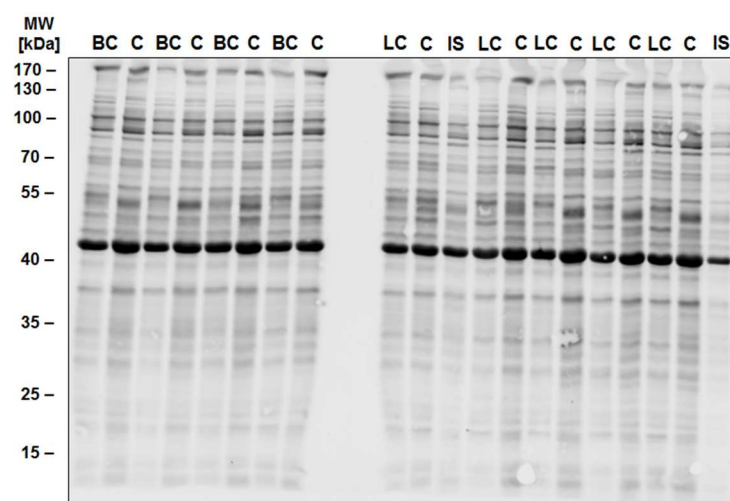


(b)

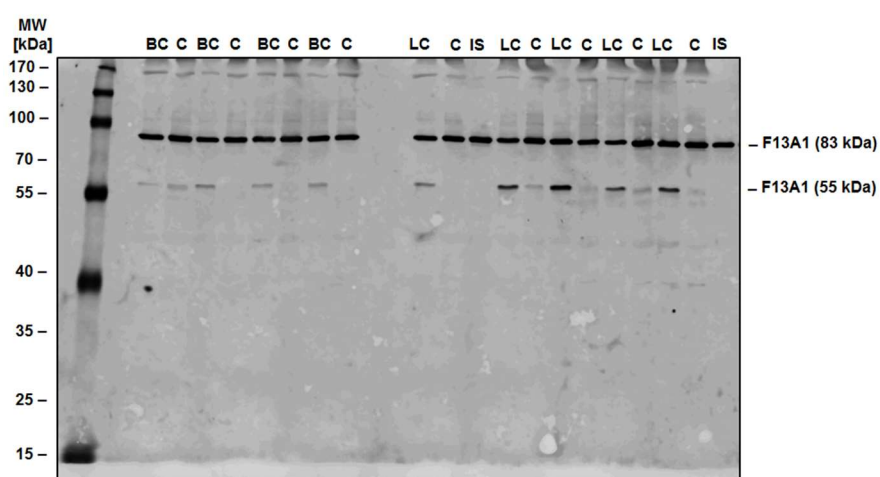


Addition to Figure S5: (a) 2D-WB of F13A1 83 kDa and (b) F13a1 55 kDa.

(a)

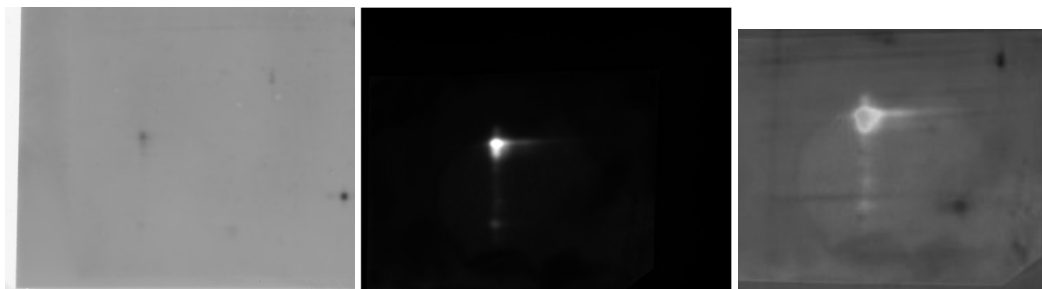


(b)



Addition to Figure S6: (a) Ruthenium-based whole-protein stain of blotted proteins and (b) F13A1 antibody signals detected by fluorescence signal (Cy5).

(a)

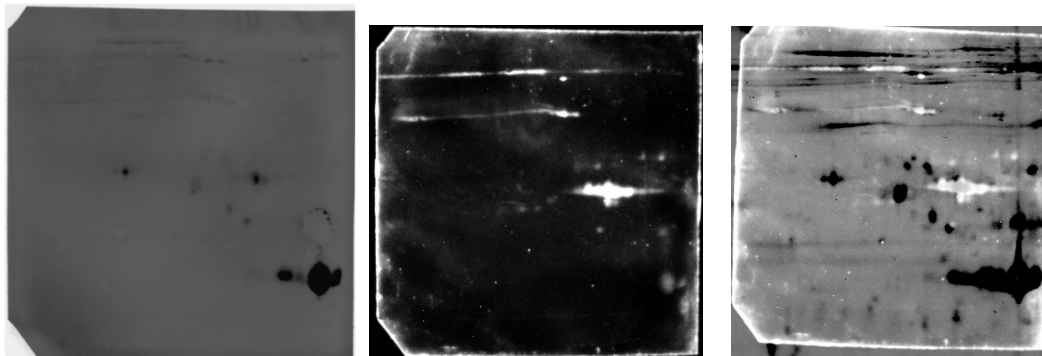


Cy2 signal

Cy5 signal

Overlay

(b)

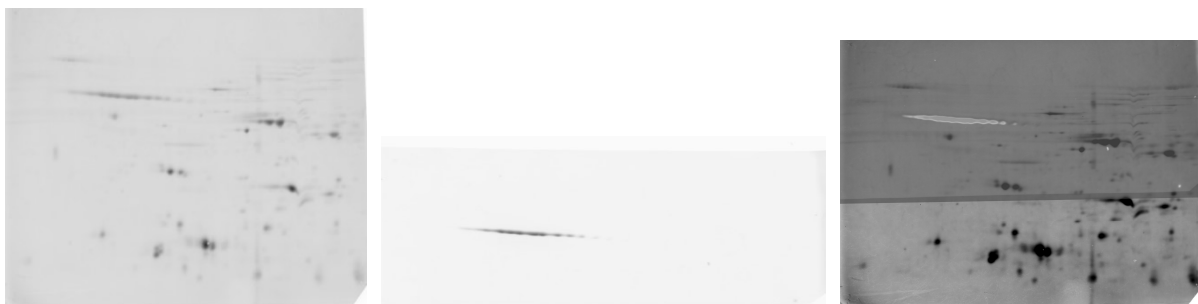


Cy2 signal

HRP signal

Overlay

(c)

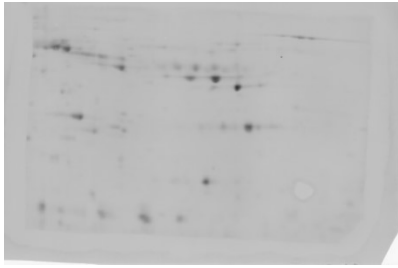


Cy2 signal

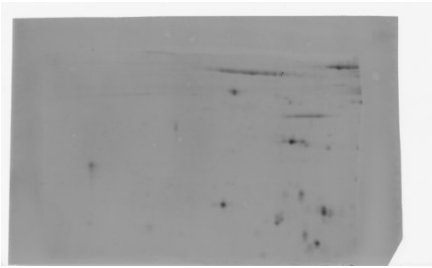
Cy5 signal

Overlay

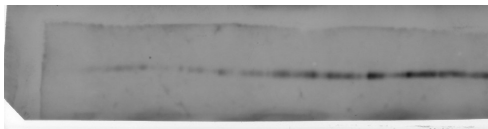
(d)



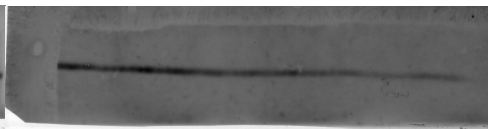
Cy2 signal



Cy2 signal



Cy5 signal

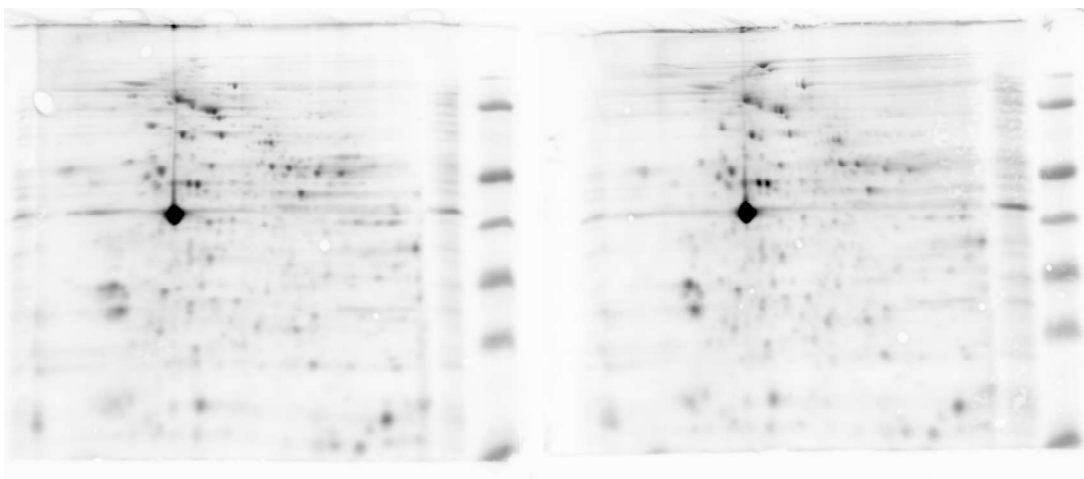


Cy5 signal

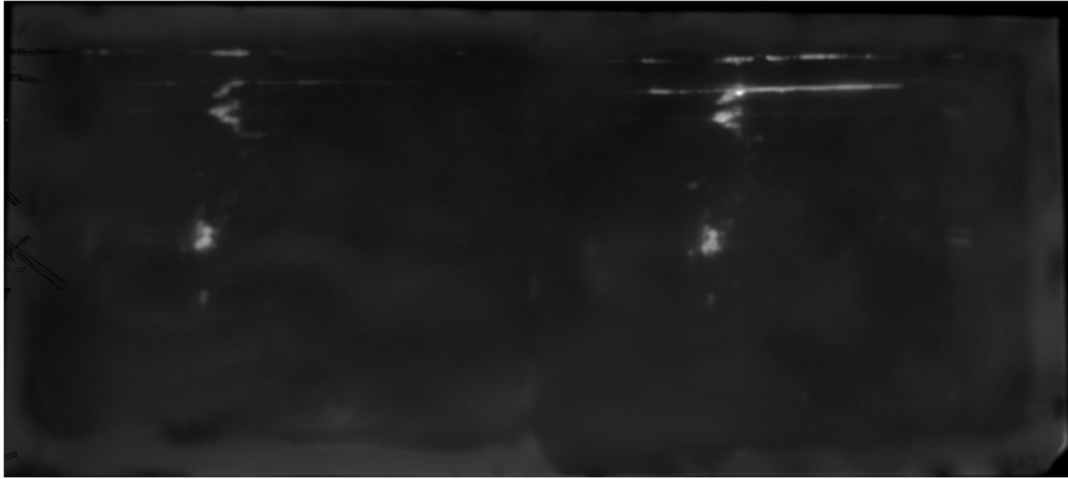


Overlay

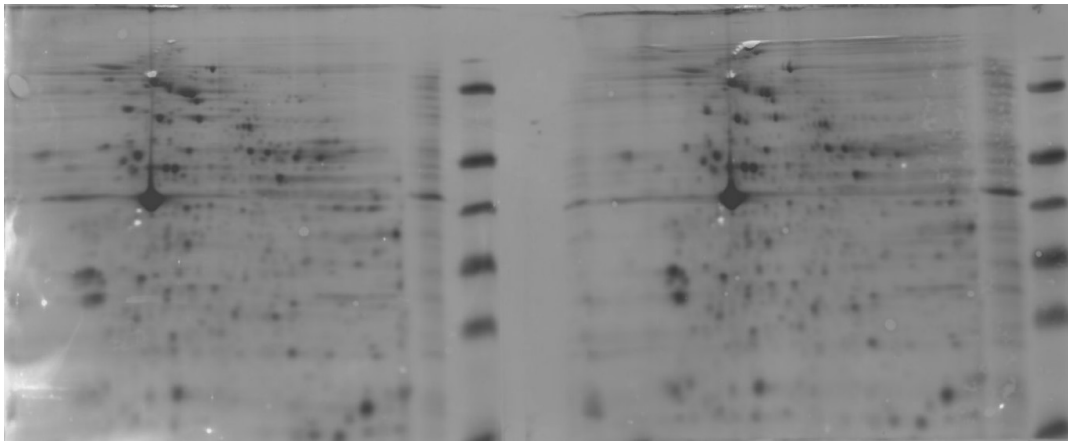
(e)



Cy5 signal



HRP signal



Overlay

Addition to Figure S7: (a) 2D-WB of CALR and HSPA5, (b) ITGA2B, (c) ITGB3, (d, e) TLN1.