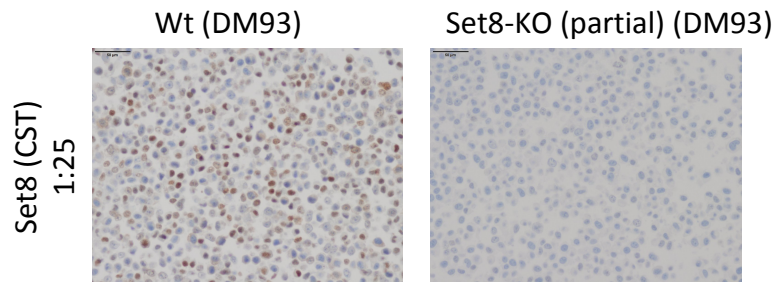
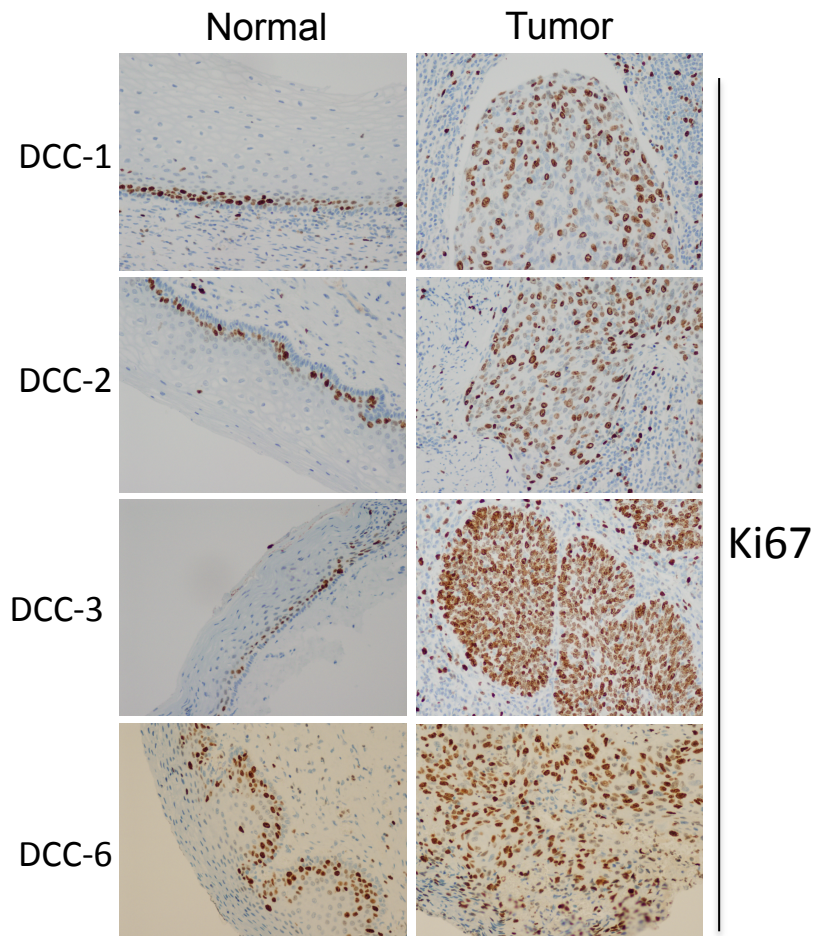


Supplementary -1

(A) Set8 antibody specificity

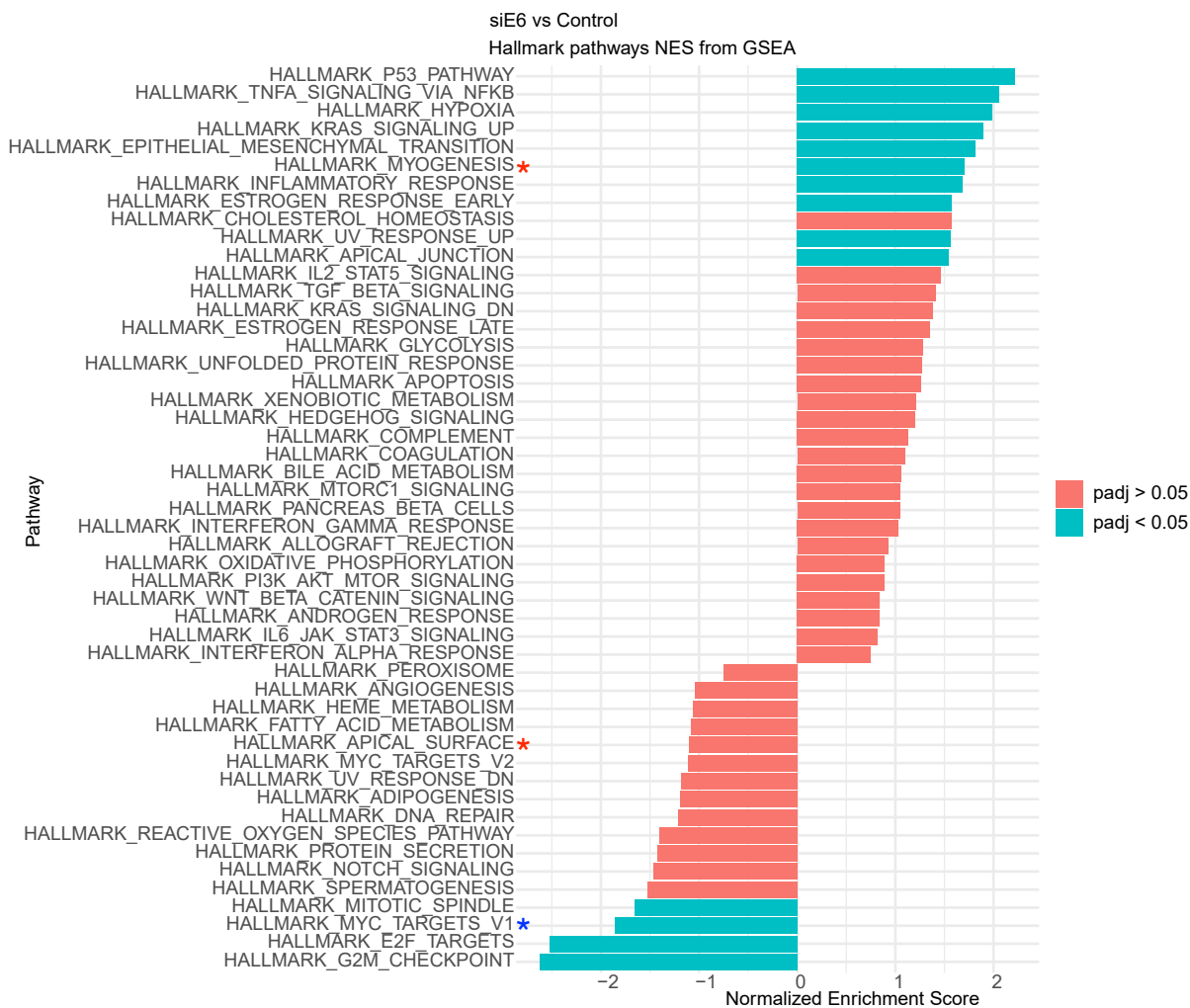


(B) Ki67 staining pattern in normal and cancerous pairs

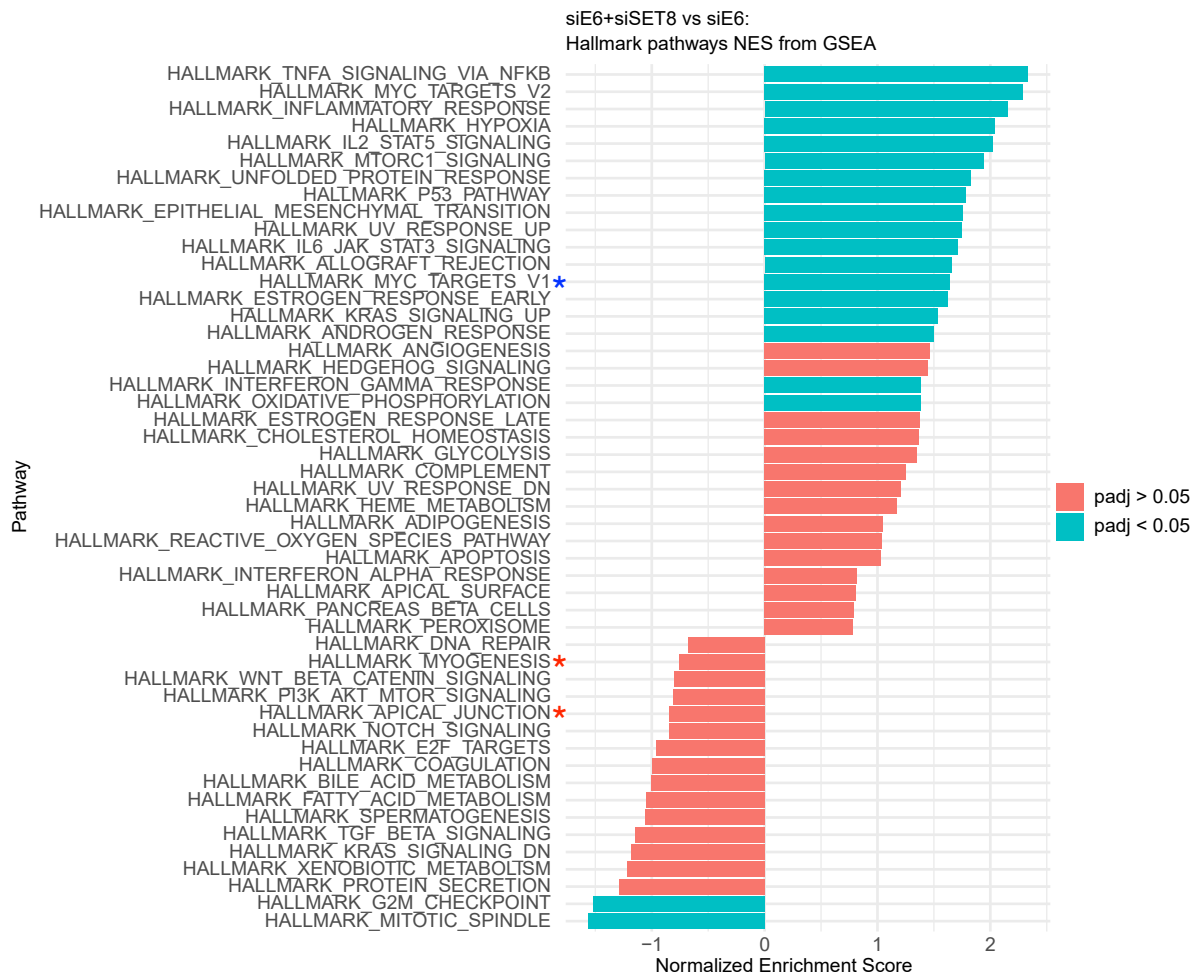


Supplementary-2

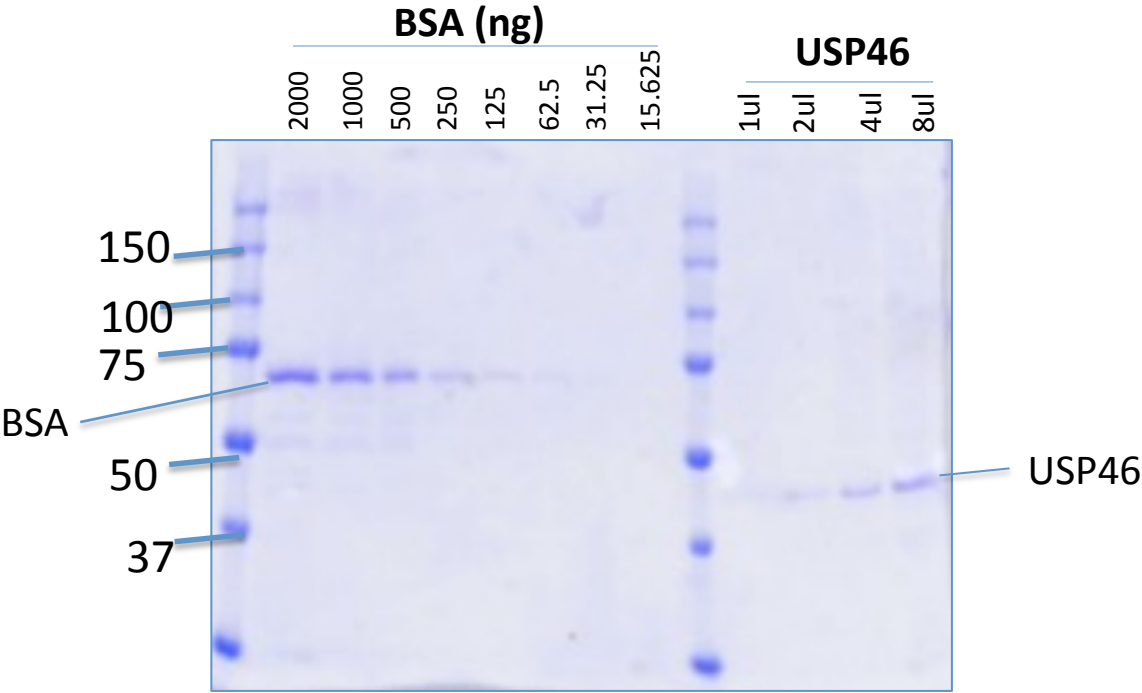
(A)



(B)



Supplementary-3



Supplementary Tables

(S1) Data table

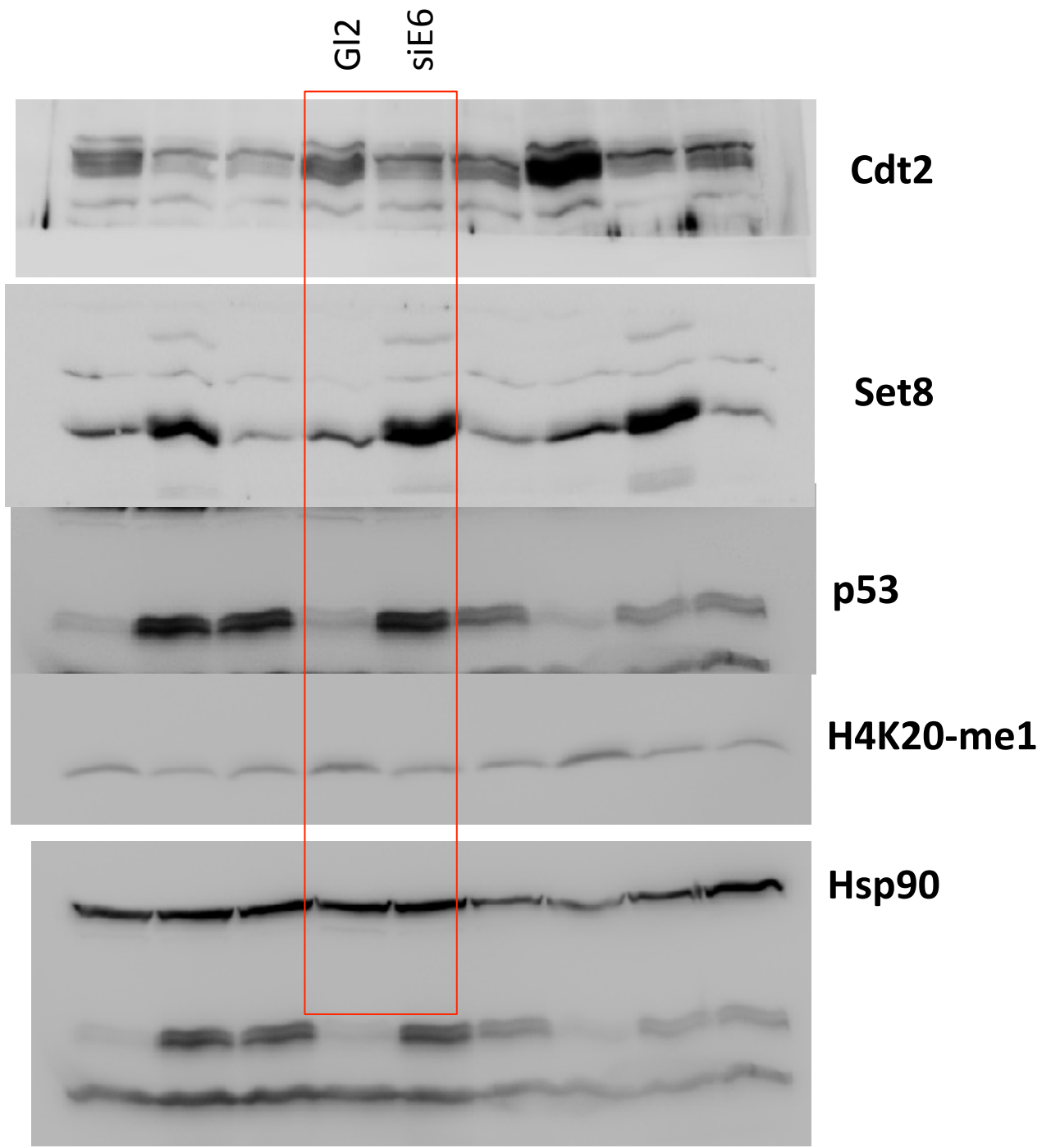
Sample name	Raw reads	Clean reads	Raw bases	Clean bases	Error rate(%)	Q20(%)	Q30(%)	GC content(%)
SK01 (GI2-Contro)	71130612	70026436	10.7G	10.5G	0.03	97.86	94.16	51.31
SK02 (siE6)	73431482	72178864	11G	10.8G	0.03	97.8	94.01	51.55
SK03 (siE6 + siSet8)	81704490	80268672	12.3G	12G	0.03	97.91	94.31	51.7
SK04 (GI2-Contro)	83973274	82477644	12.6G	12.4G	0.03	96.85	91.88	51.09
SK05 (siE6)	73744256	72293398	11.1G	10.8G	0.02	98.06	94.53	51.59
SK06 (siE6 + siSet8)	75703744	74508840	11.4G	11.2G	0.03	97.91	94.27	51.59
SK07 (GI2-Contro)	73376218	72123184	11G	10.8G	0.03	97.79	93.98	51.01
SK08 (siE6)	67527940	66287472	10.1G	9.9G	0.03	97.79	94	51.77
SK09 (siE6 + siSet8)	70788308	69651182	10.6G	10.4G	0.02	97.96	94.41	51.85

(S2) Mapped reads

Sample name	SK01	SK02	SK03	SK04	SK05	SK06	SK07	SK08	SK09
Total reads	70026436	72178864	80268672	82477644	72293398	74508840	72123184	66287472	69651182
Total mapped reads	67199286	68820950	76410802	77938064	68974080	71222798	69049858	63108728	66713024
Uniquely mapped reads	65875466	67520864	74949666	76379214	67677624	69868010	67692256	61917270	65408354
Multiple mapped reads	1323820	1300086	1461136	1558850	1296456	1354788	1357602	1191458	1304670
Total mapping rate	95.96%	95.35%	95.19%	94.50%	95.41%	95.59%	95.74%	95.21%	95.78%
Uniquely mapping rate	94.07%	93.55%	93.37%	92.61%	93.62%	93.77%	93.86%	93.41%	93.91%
Multiple mapping rate	1.89%	1.80%	1.82%	1.89%	1.79%	1.82%	1.88%	1.80%	1.87%

Supplementary - 4 : Original Western blot

Fig 1C



Quantifications
presented in the main figure

Fig 1D

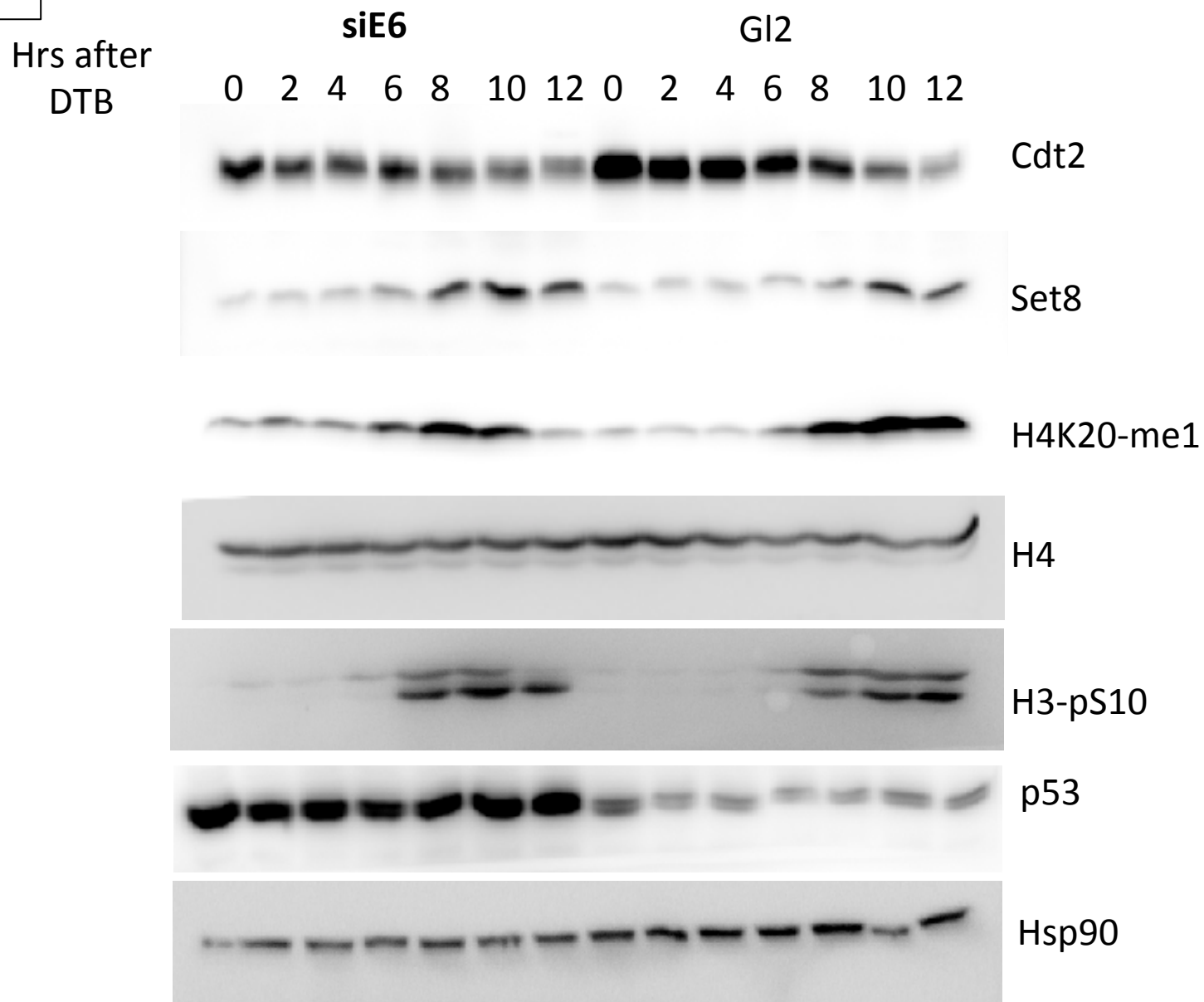
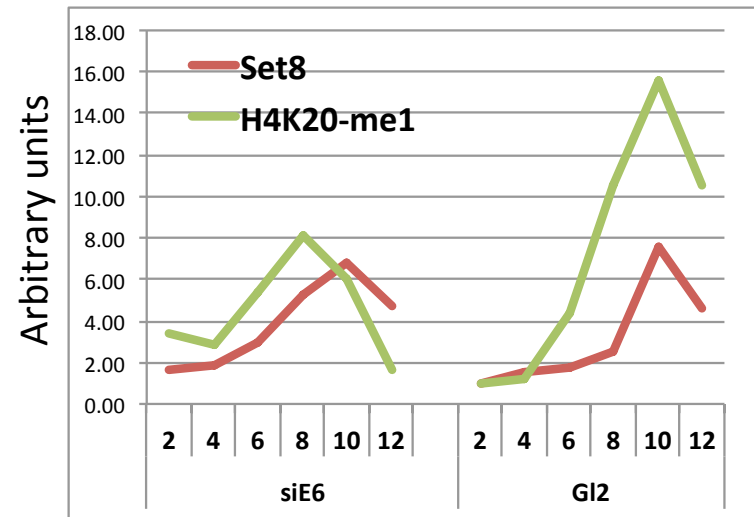
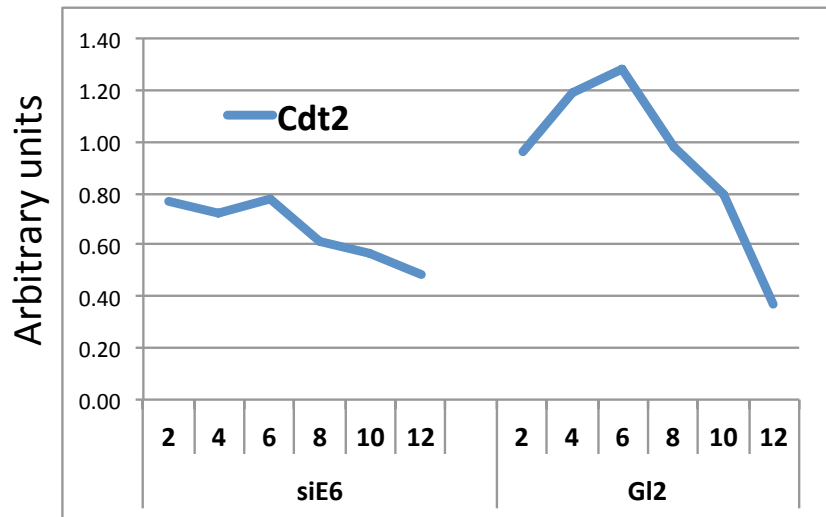


Fig- 1D – Quantification data

	siE6								GI2						
	0	2	4	6	8	10	12		0	2	4	6	8	10	12
Cdt2	1.37	0.77	0.72	0.78	0.61	0.57	0.48		1.00	0.96	1.19	1.28	0.98	0.79	0.37
Set8	1.44	1.66	1.82	2.94	5.32	6.84	4.72		1.00	0.98	1.48	1.71	2.50	7.59	4.60
H4K20-me1	2.49	3.37	2.88	5.33	8.12	6.03	1.64		1.00	0.95	1.20	4.38	10.49	15.59	10.58
H4	1.00	1.00	1.00	1.00	1.00	1.00	1.00		1.00	1.00	1.00	1.00	1.00	1.00	1.00
H3-pS-10	0.52	1.24	0.98	3.08	18.84	20.23	11.63		1.00	0.48	0.85	4.01	14.97	23.69	19.10
p53	3.87	2.31	2.27	2.05	2.00	2.11	1.85		1.00	0.55	0.74	0.54	0.57	1.05	0.73
Hsp90	0.62	0.97	0.81	0.94	0.94	0.87	0.85		1.00	1.18	1.49	1.77	2.02	1.43	1.49

Table-1: Values indicating densitometry analysis for each probed band at different time points corresponding to Fig.-1D. Each timepoint was normalised first to respective H4 measurements and then to the measurement at 0 time point of GI2



- Plots indicating the levels of Cdt2, Set8 and H4K20-me1 accumulation at different time points corresponding to Fig-1D . 0 -time point was eliminated because of aberrant values.

Fig 1E

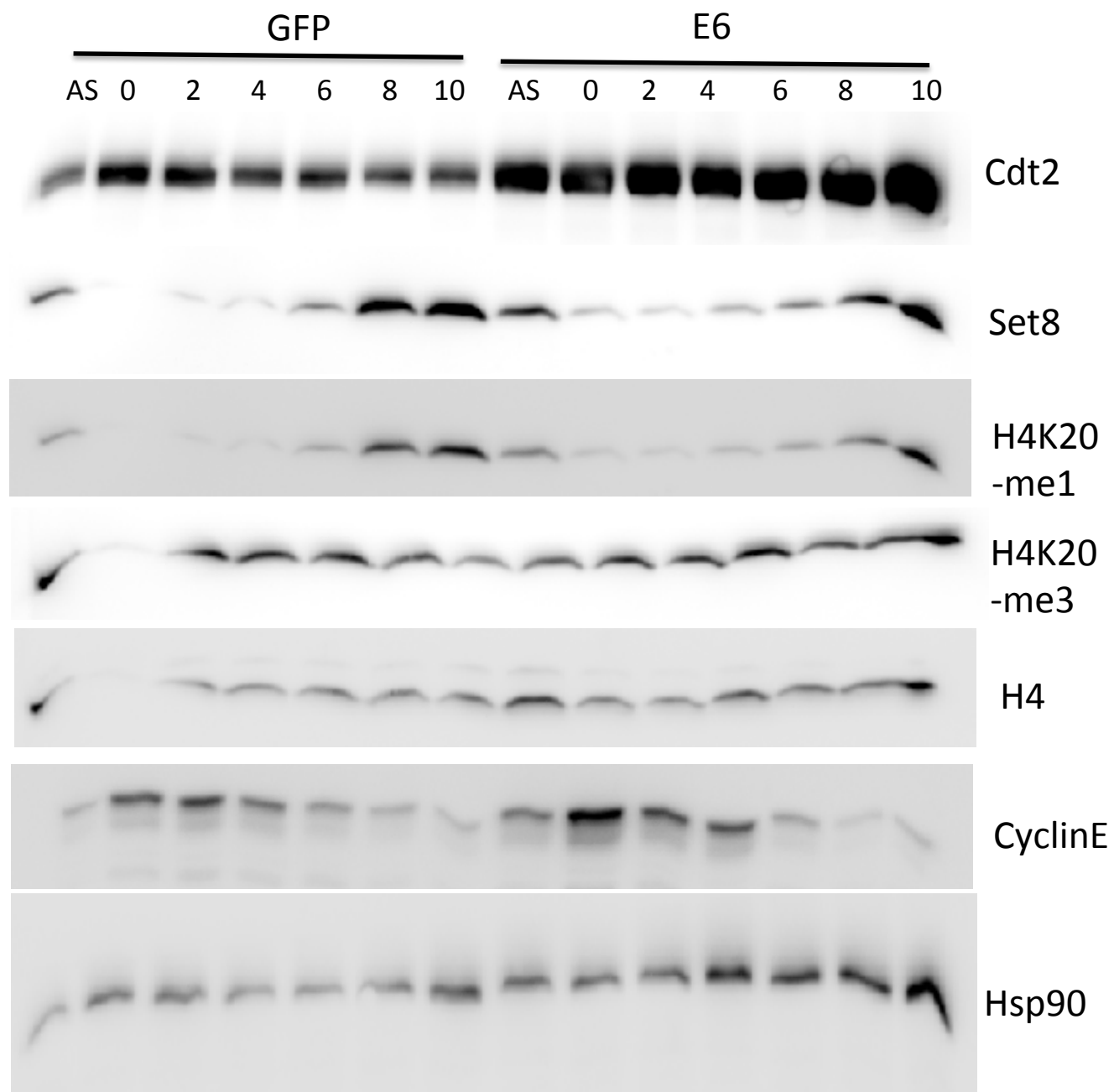
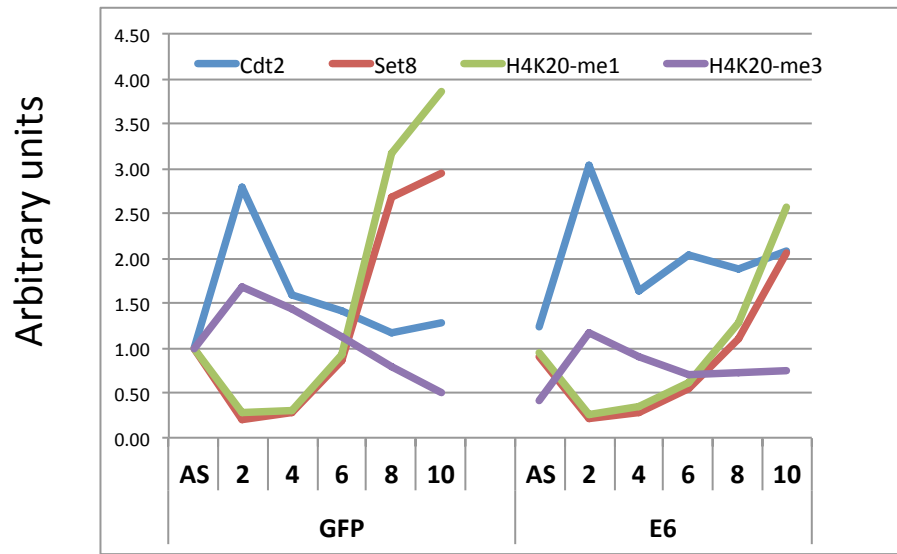


Fig- 1E – Quantification data

	GFP							E6					
	AS	2	4	6	8	10		AS	2	4	6	8	10
Cdt2	1.00	2.79	1.59	1.42	1.16	1.29		1.24	3.03	1.63	2.03	1.87	2.07
Set8	1.00	0.20	0.28	0.87	2.69	2.94		0.91	0.21	0.29	0.55	1.10	2.05
H4K20-me1	1.00	0.27	0.31	0.91	3.16	3.85		0.95	0.26	0.35	0.60	1.27	2.57
H4K20-me3	1.00	1.67	1.43	1.11	0.79	0.49		0.40	1.16	0.90	0.71	0.72	0.74
H4	1.00	1.00	1.00	1.00	1.00	1.00		1.00	1.00	1.00	1.00	1.00	1.00
Cyclin E	1.00	8.18	4.17	2.34	1.32	0.75		2.03	5.97	2.23	1.25	0.36	0.37
Hsp90	1.00	3.64	1.61	1.15	1.34	2.82		1.17	2.25	2.00	2.27	2.29	3.80

Table-2: Values indicating densitometry analysis for each probed band at different time points corresponding to Fig.-1E. Each timepoint was normalised first to respective H4 measurements and then to the measurement at Asynchronous (AS) time point of GFP transfected cells.



Plots indicating the levels of Cdt2, Set8, H4K20-me1 and H4K20-me3 accumulation at different time points corresponding to Fig-1D . 0 -time point was eliminated because of aberrant values

Fig 2A

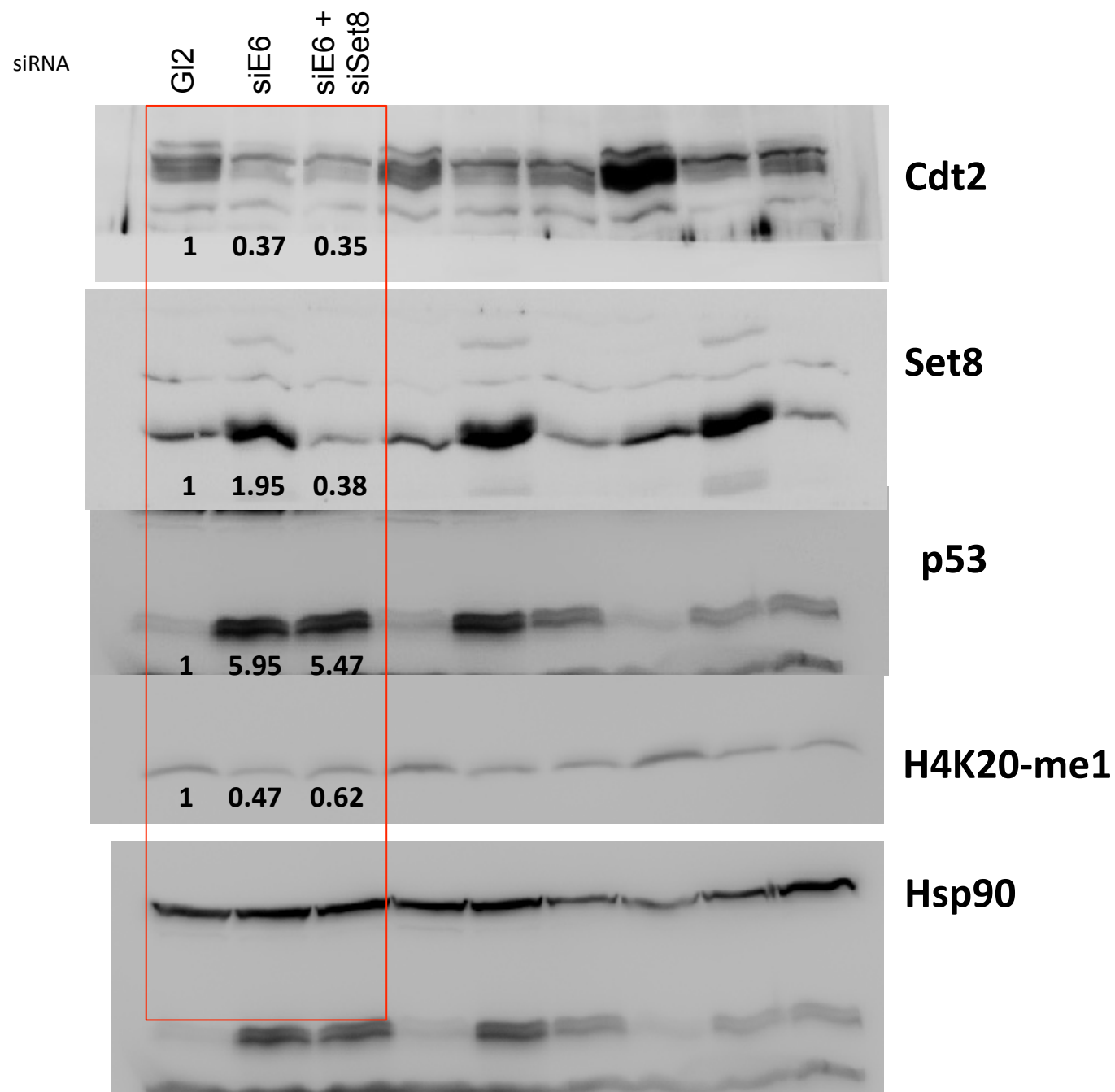
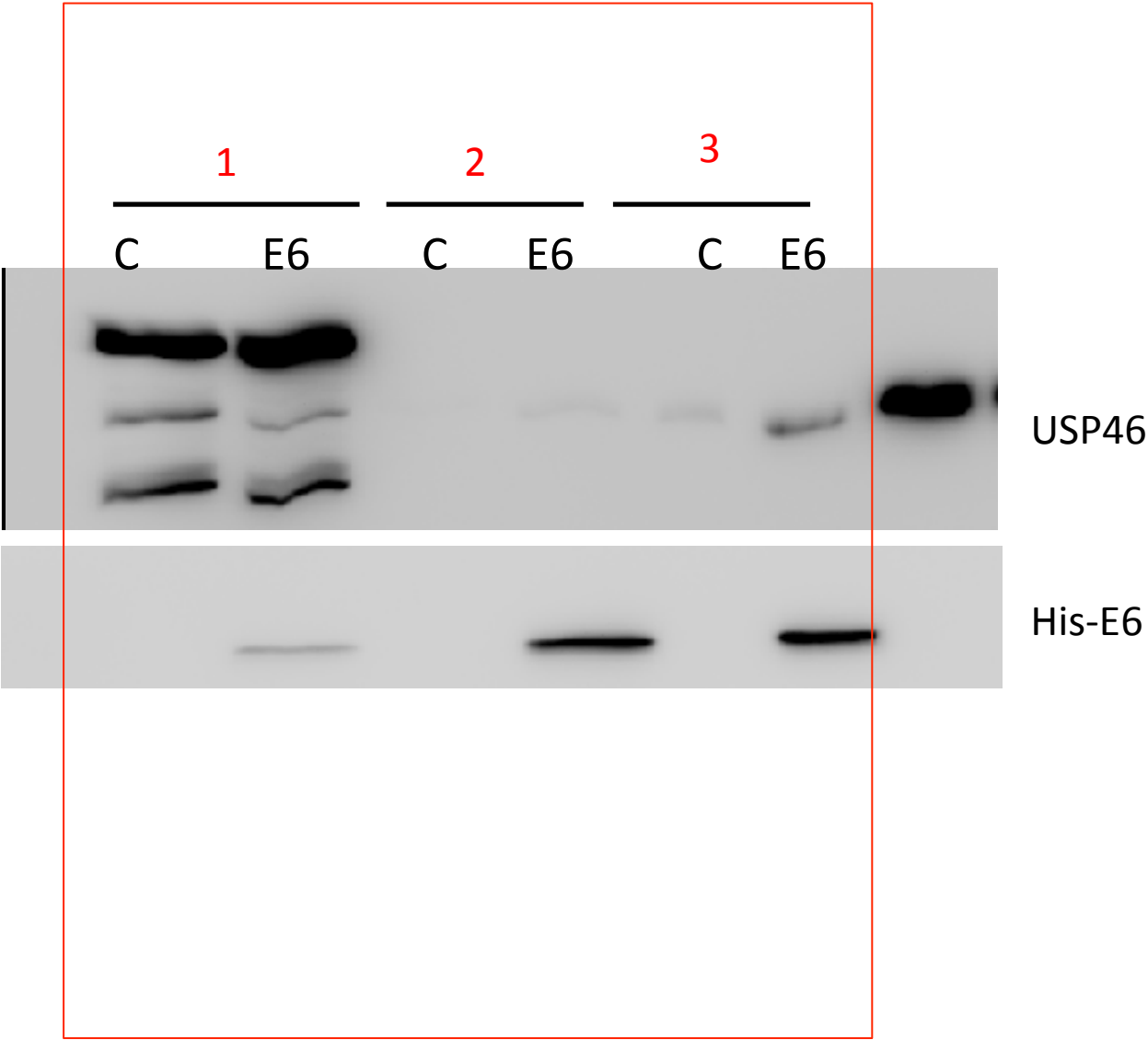


Fig- 4B



Immunoprecipitation experiment

FIG-5B

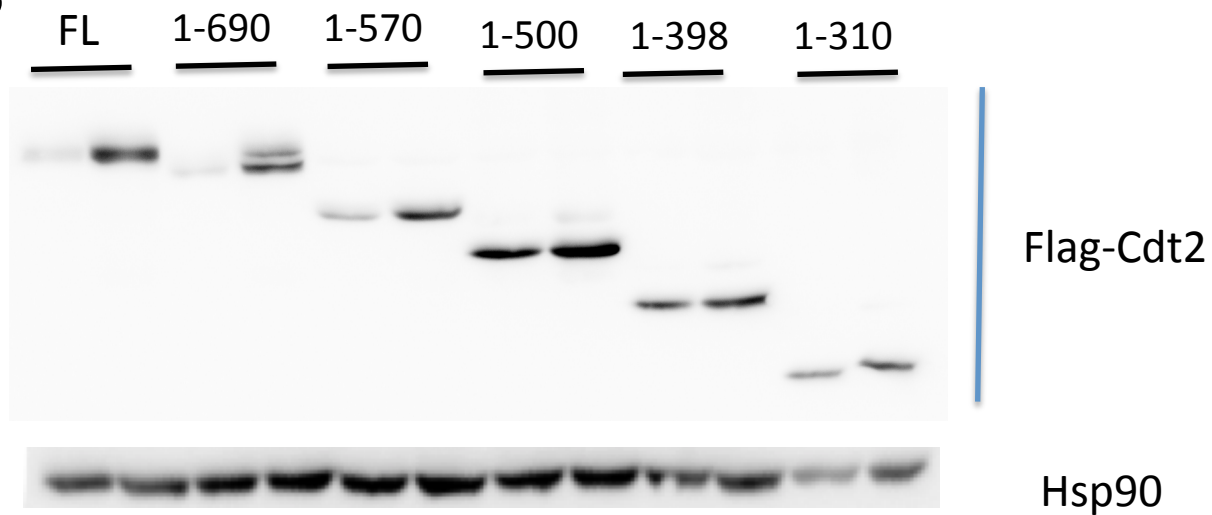


FIG-5B_inset

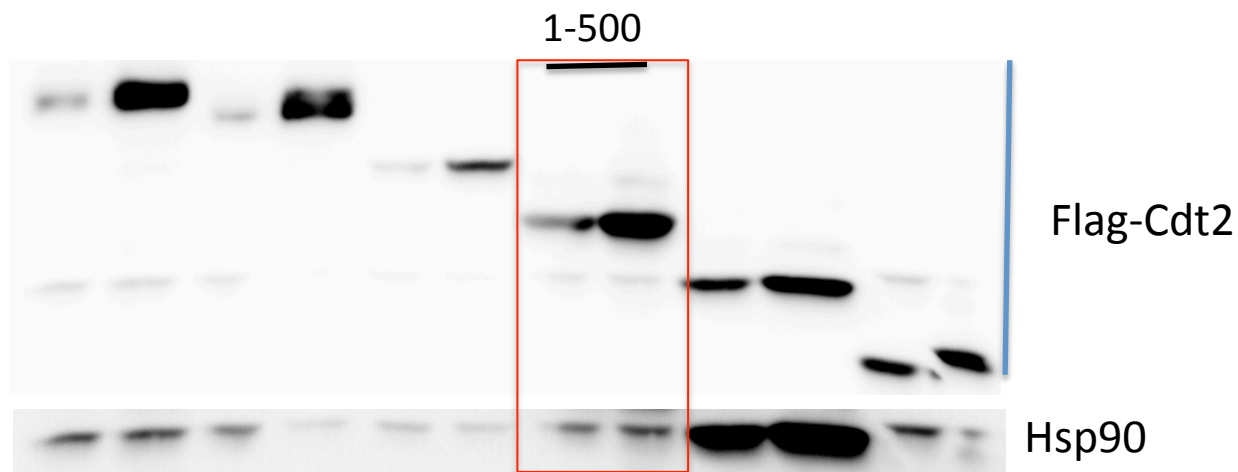


Fig- 5B – Quantification data

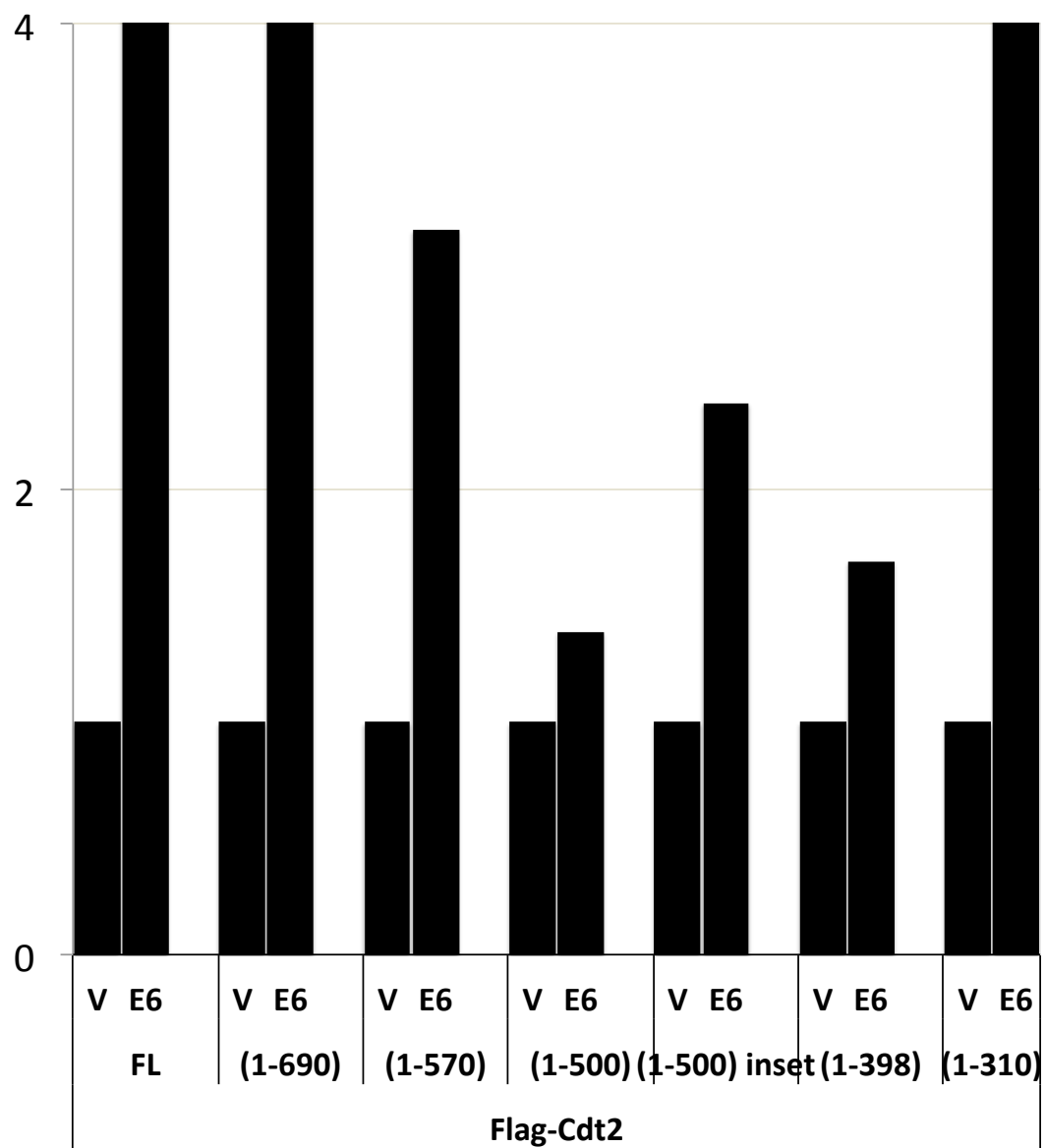


FIG-5D

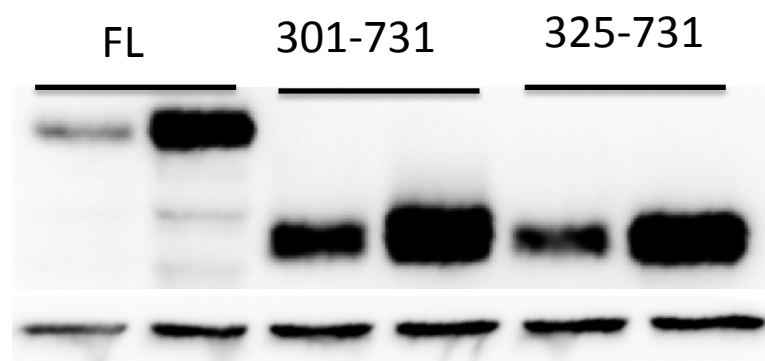
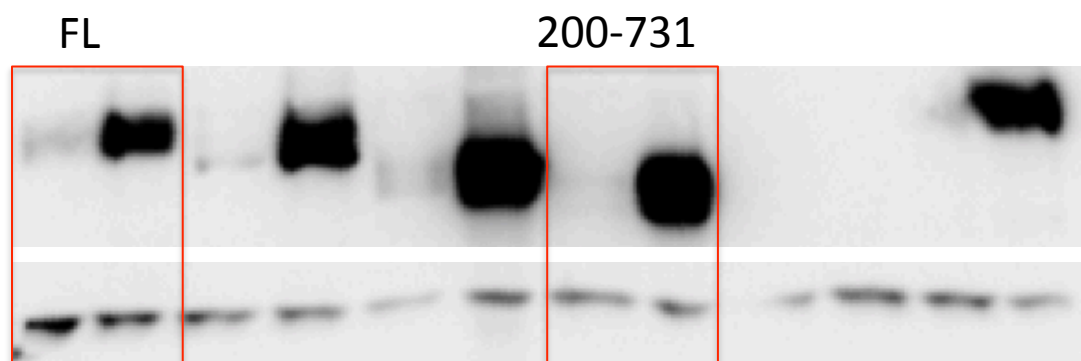


Fig- 5D – Quantification data

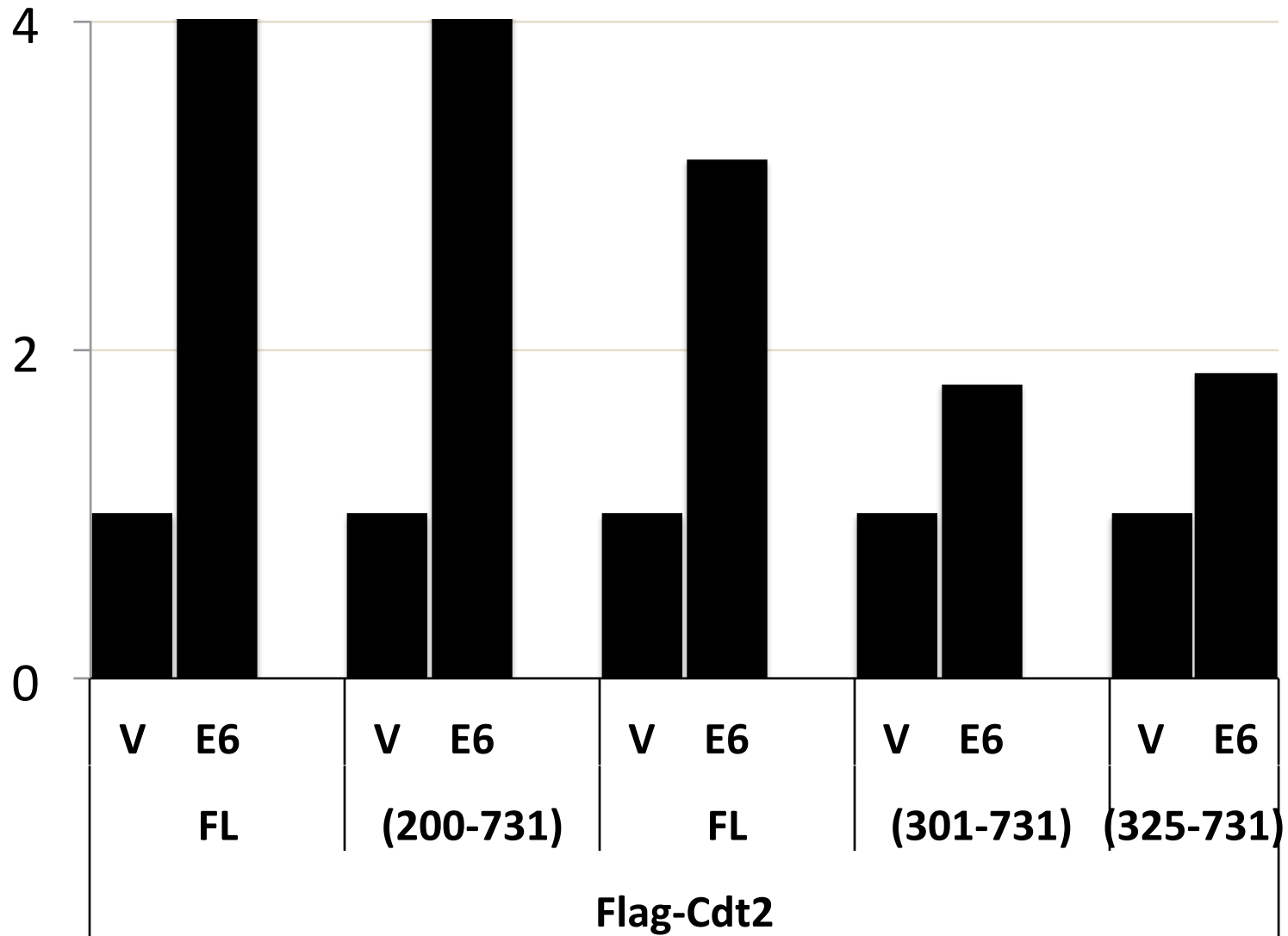
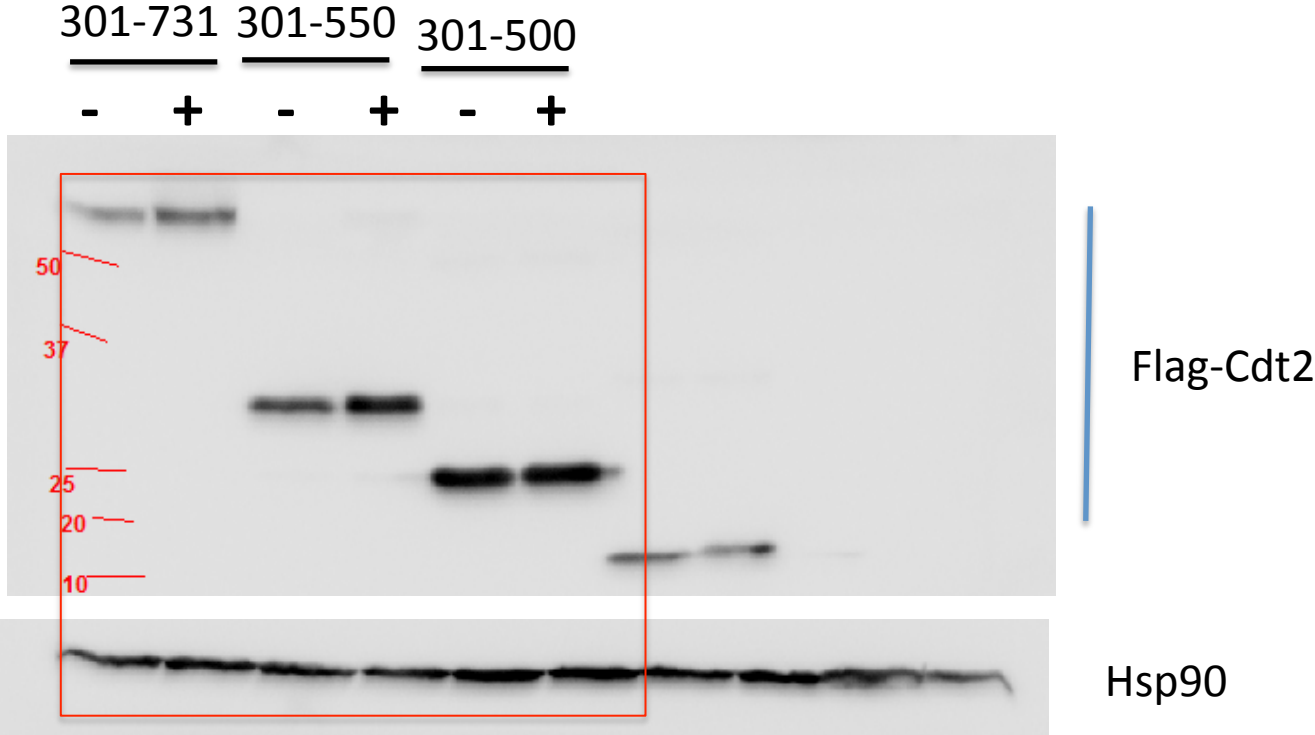
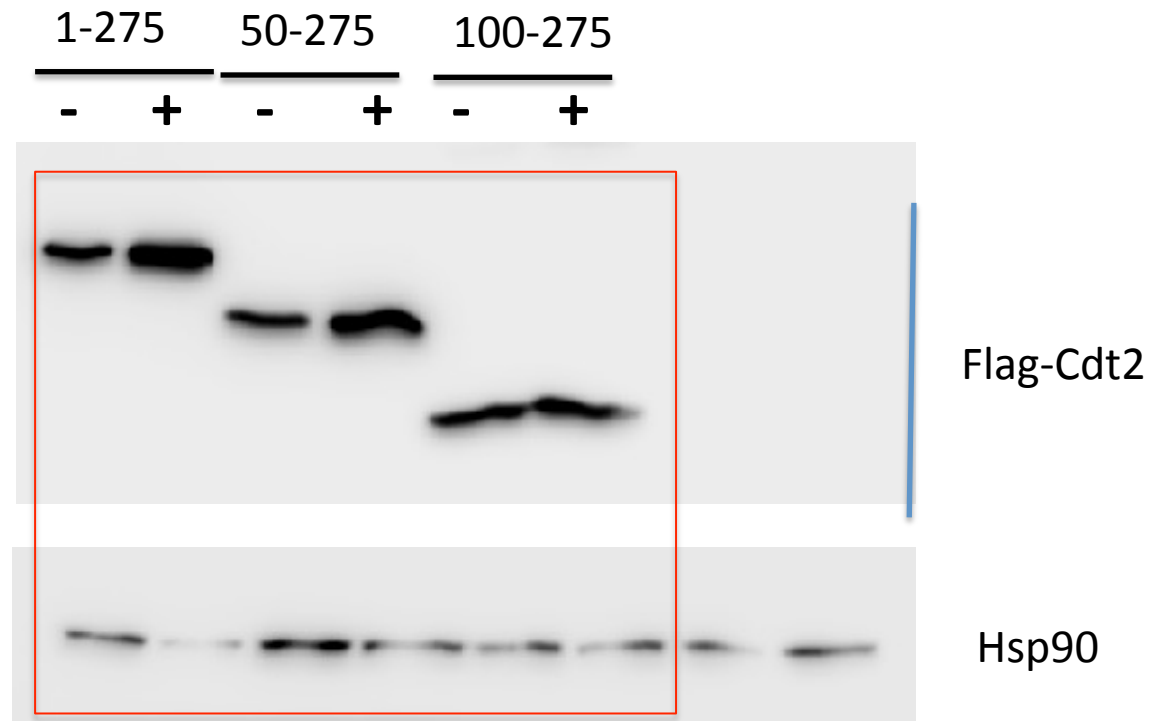


FIG-5F



Quantifications
presented in the main figure

FIG-5H



Quantifications
presented in the main figure