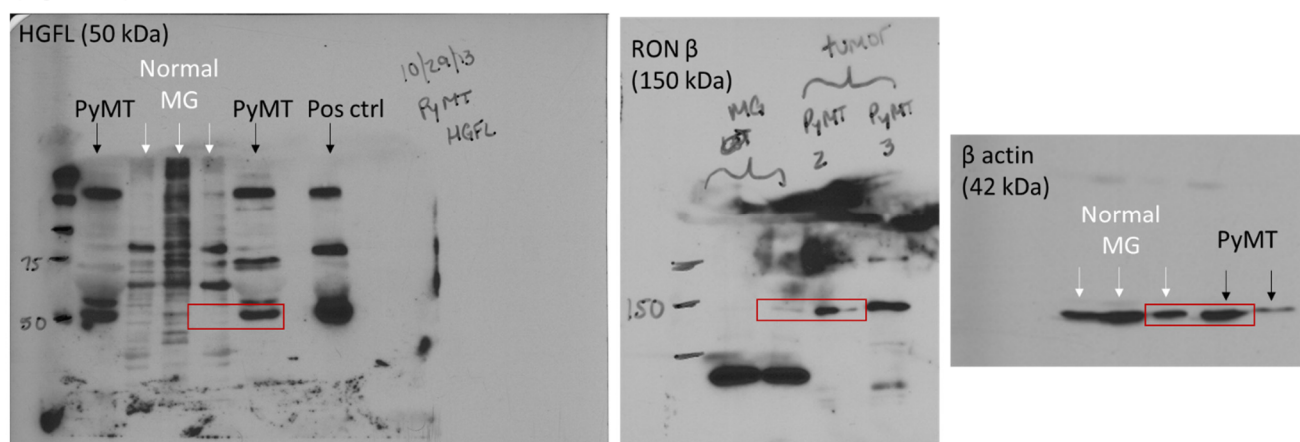


**A**

(Figure 1A)

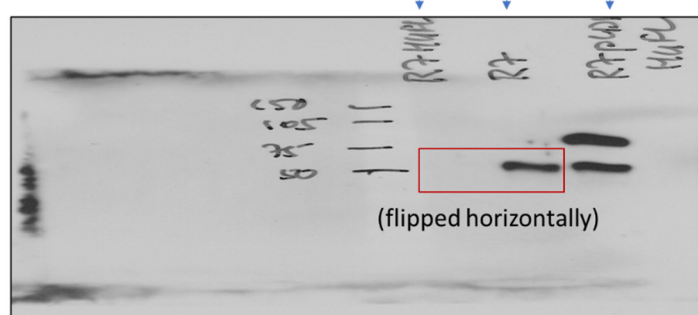


\*\*\*Sections in red box cropped for figures\*\*\*

**B**

(Figure 3A)

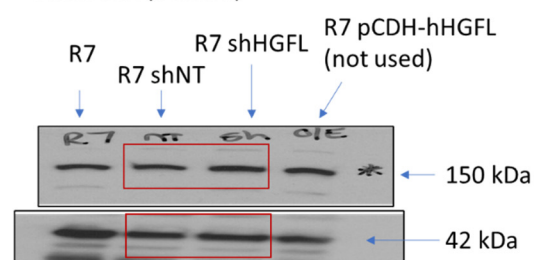
HGFL blot (cell supernatant)



(flipped horizontally)

RON blot (top)

Actin blot (bottom)



\*\*\*Sections in red box cropped for figures\*\*\*

**Figure S1.** Full western blot images. Images appearing in (A) Figure 1A and (B) Figure 3A.