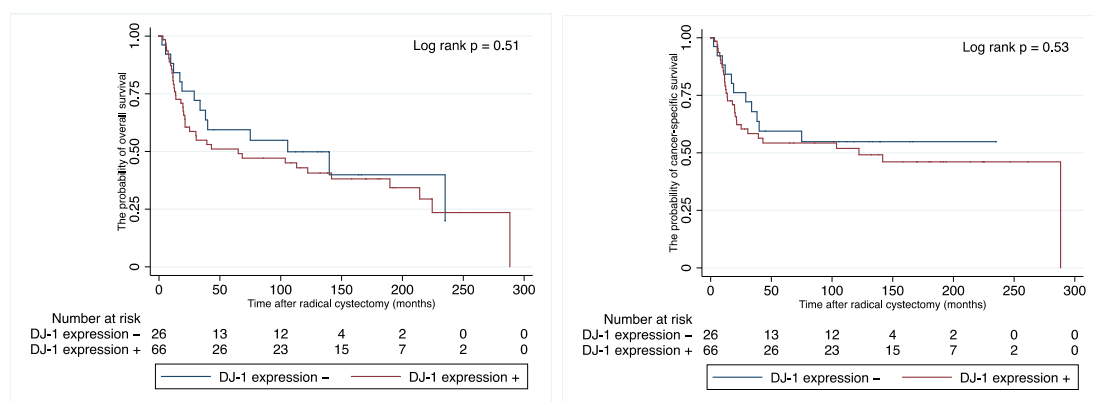
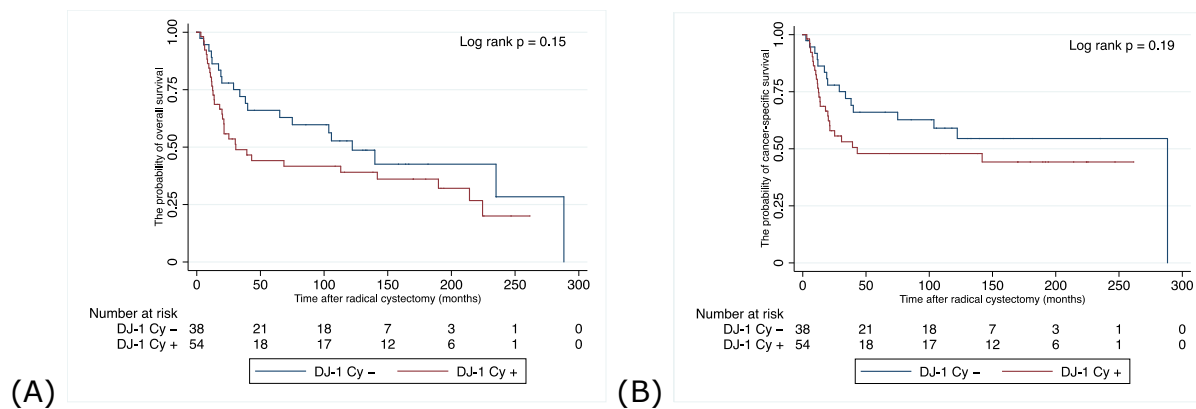


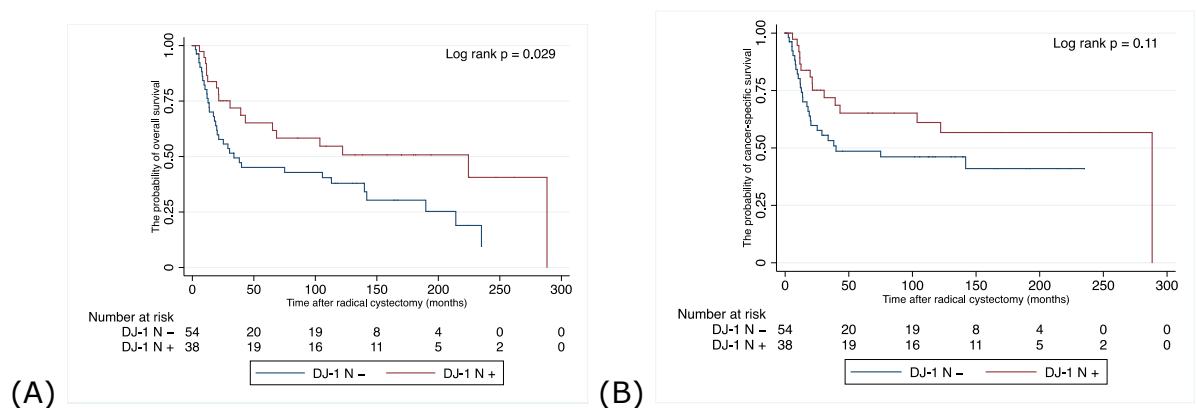
**Figure S1.** Serum concentrations of DJ-1 protein by reverse-phase protein array analysis **(A)** in patients with non-muscle-invasive bladder cancer or with urolithiasis and in healthy participants, and **(B)** in patients with muscle-invasive bladder cancer or with urolithiasis and in healthy participants.



**Figure S2.** Probability of overall survival and cancer-specific survival after radical cystectomy based on positive and negative DJ-1 expression in urothelial carcinoma.



**Figure S3.** Probability of (A) overall survival and (B) cancer-specific survival after radical cystectomy based on positive and negative DJ-1 expression in cytoplasm.



**Figure S4.** Probability of (A) overall survival and (B) cancer-specific survival after radical cystectomy based on positive and negative DJ-1 expression in the nucleus.