

# Supplementary Information File

Original, uncropped blots and gels

Manuscript title:

## **Telomere as a Therapeutic Target in Dedifferentiated Liposarcoma**

**Irene Alessandrini<sup>1</sup>, Stefano Percio<sup>1</sup>, Eisa Naghshineh<sup>1</sup>, Valentina Zuco<sup>1</sup>, Silvia Stacchiotti<sup>2</sup>,  
Alessandro Gronchi<sup>1</sup>, Sandro Pasquali<sup>1,3</sup>, Nadia Zaffaroni<sup>1\*,†</sup>, Marco Folini<sup>1\*,†</sup>**

<sup>1</sup> Molecular Pharmacology Unit, Department of Applied Research and Technological Development, Fondazione IRCCS Istituto Nazionale dei Tumori di Milano, Via G.A. Amadeo 42, 20133 Milan, Italy;

<sup>2</sup> Adult Mesenchymal Tumor and Rare Cancer Unit, Department of Cancer Medicine, Fondazione IRCCS Istituto Nazionale Tumori, via Venezian 1, 20133, Milan, Italy;

<sup>3</sup> Sarcoma Service, Department of Surgery, Fondazione IRCCS Istituto Nazionale Tumori, via Venezian 1, 20133, Milan, Italy;

\* Correspondence: [nadia.zaffaroni@istitutotumori.mi.it](mailto:nadia.zaffaroni@istitutotumori.mi.it); [marco.folini@istitutotumori.mi.it](mailto:marco.folini@istitutotumori.mi.it); Tel.: +39-022-390-3260 (N.Z.); +39-022-390-5027 (M.F.).

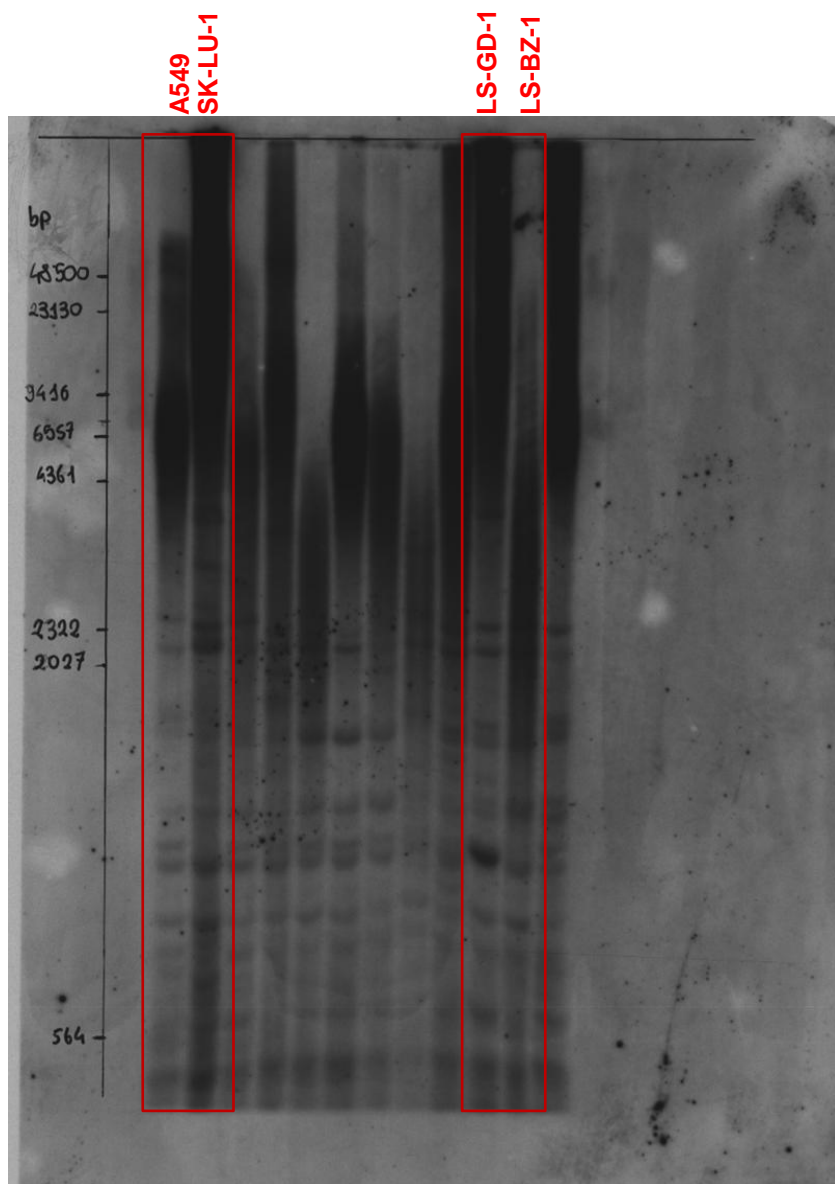


Figure S4. Full Southern blot of Figure 2 (A)

*First replicate*

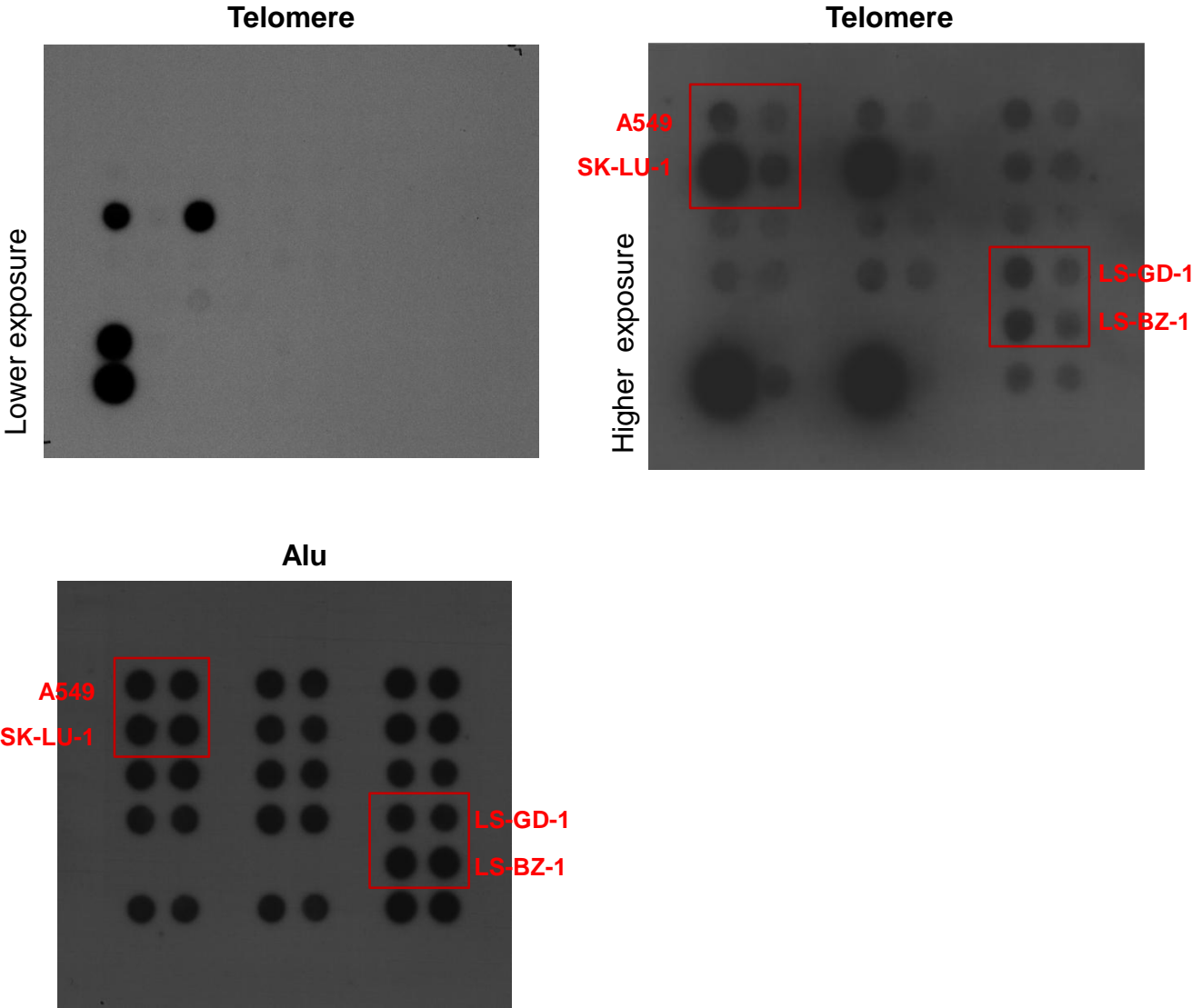
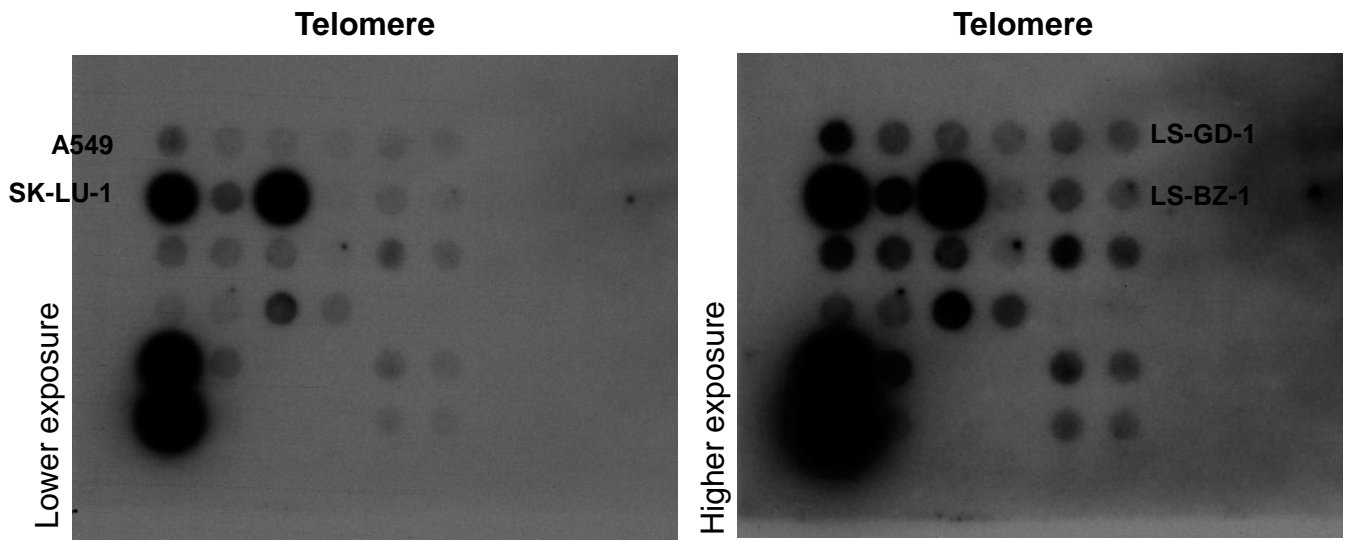
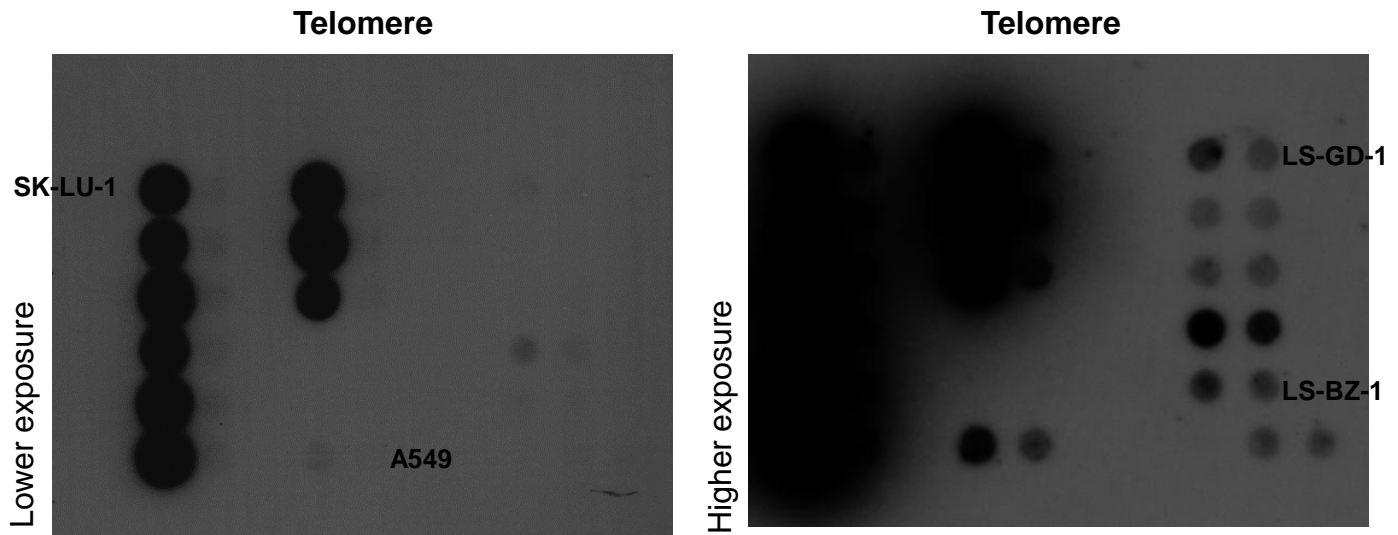


Figure S5. Full Dot Blot of Figure 2 (B).

## *Second replicate*



## *Third replicate*



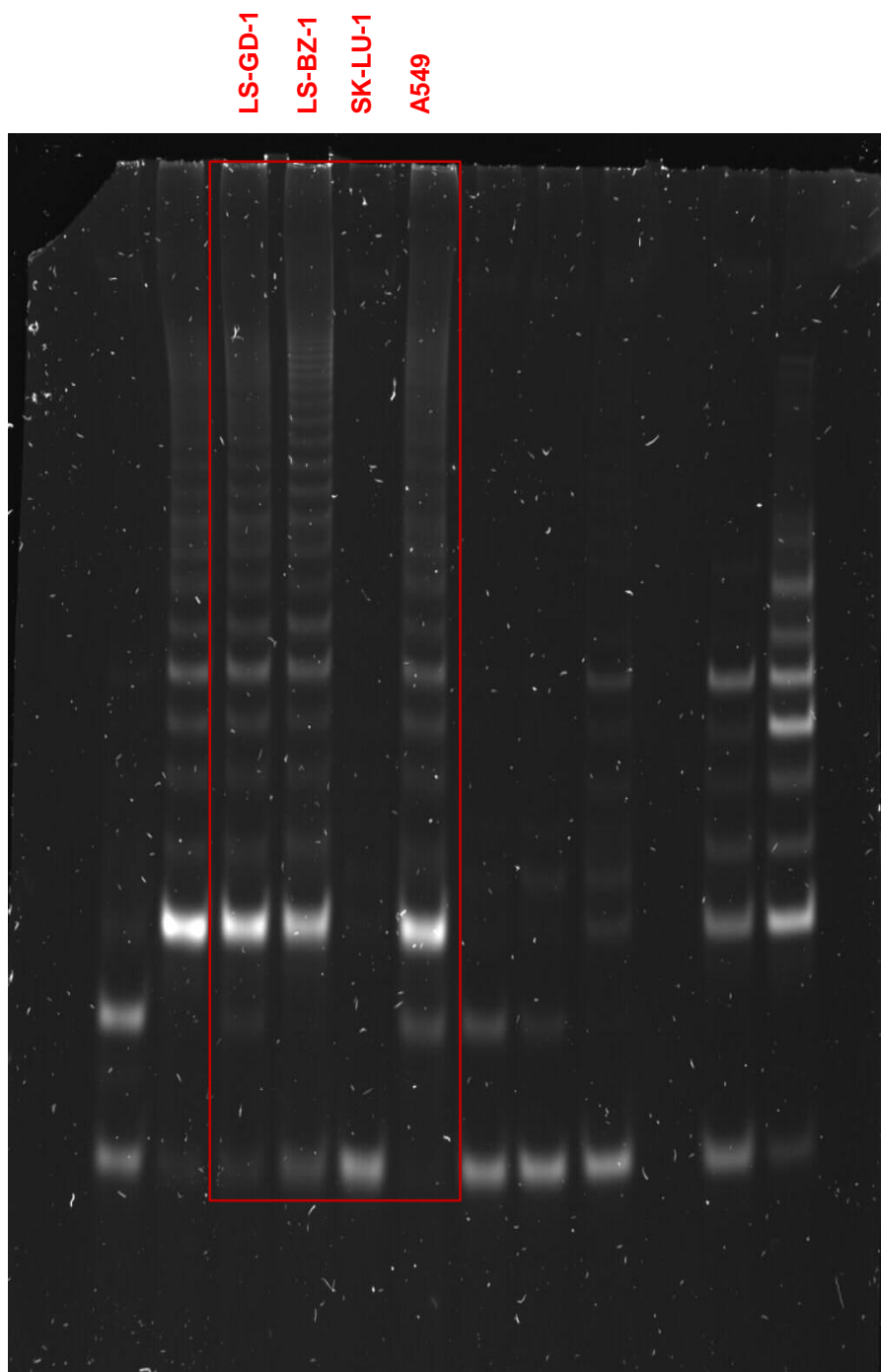
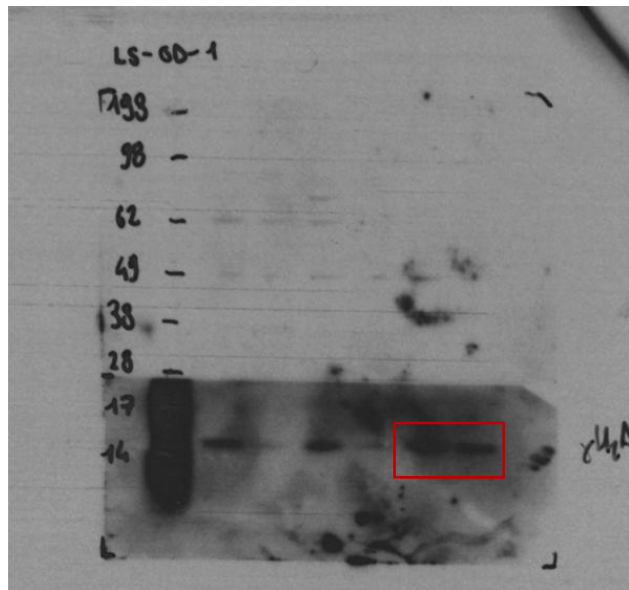
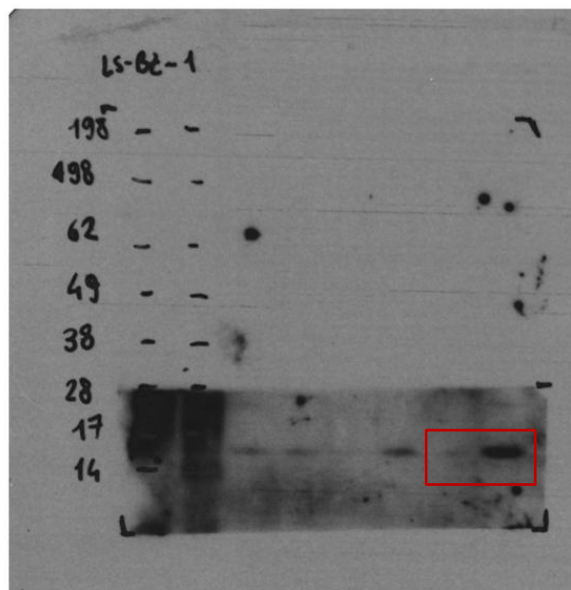


Figure S6. Full gel of Figure 2 (D).

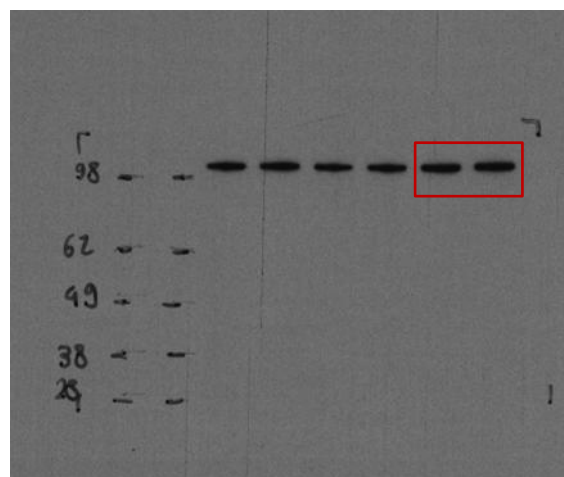
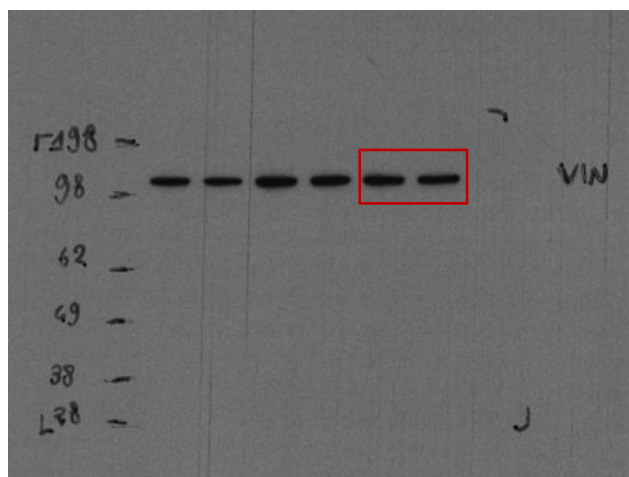
LS-GD-1



LS-BZ-1



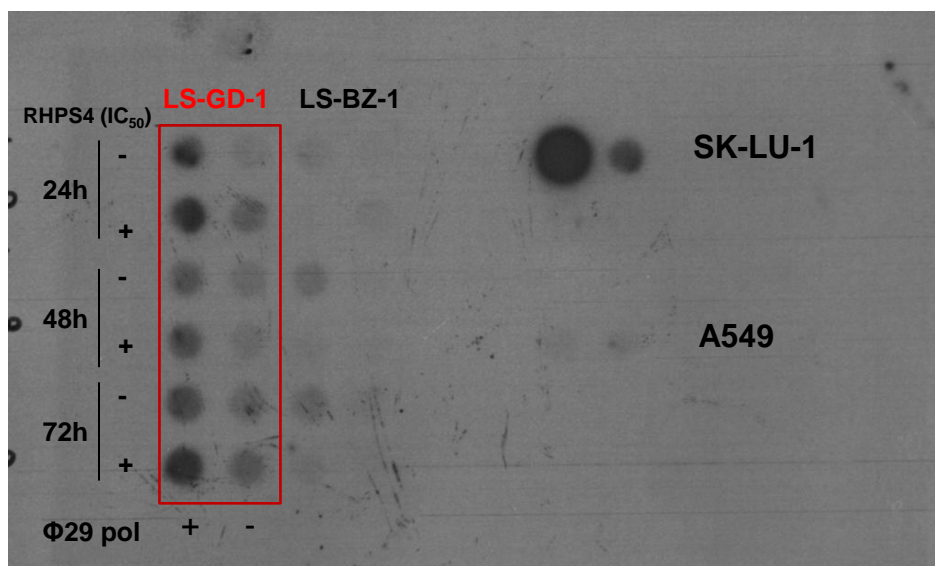
$\gamma$ -H2AX



VCL

Figure S7. Full Western blot of Figure 3 (B).

***First replicate***



***Second replicate***

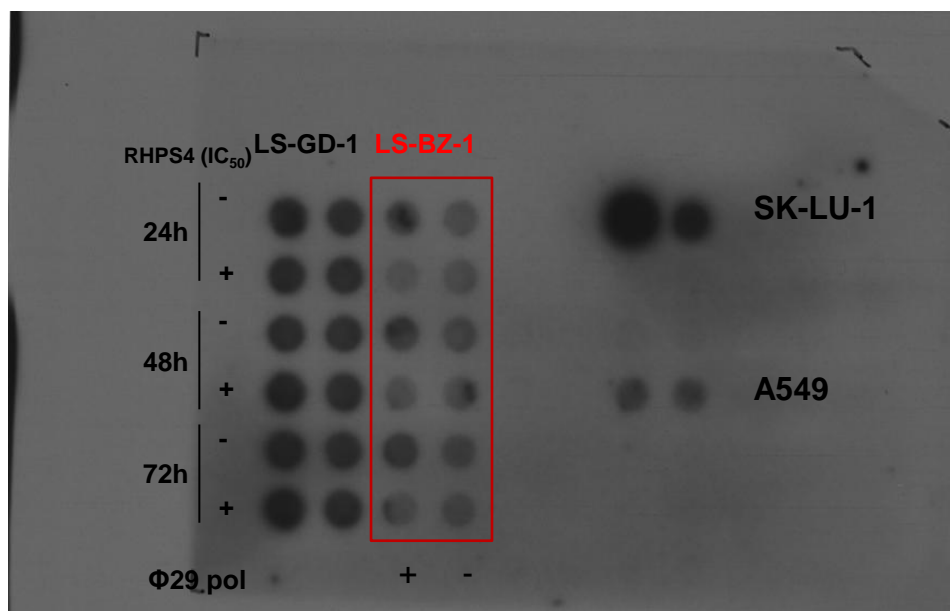
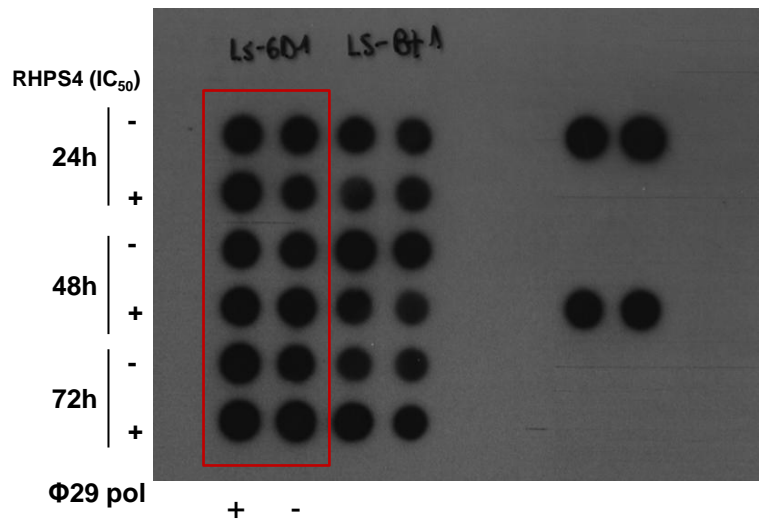


Figure S8. Full Dot blot of Figure 3 (D).

*First replicate*



*Second replicate*

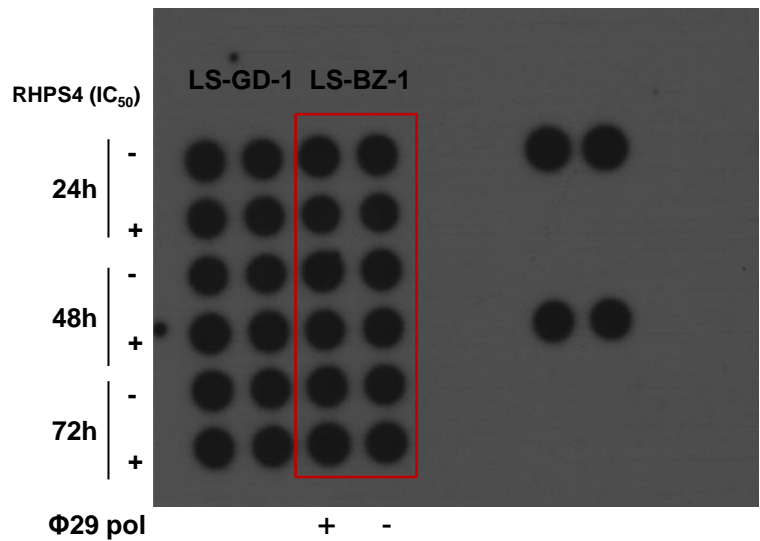


Figure S9. Full Dot blot of Figure S2.



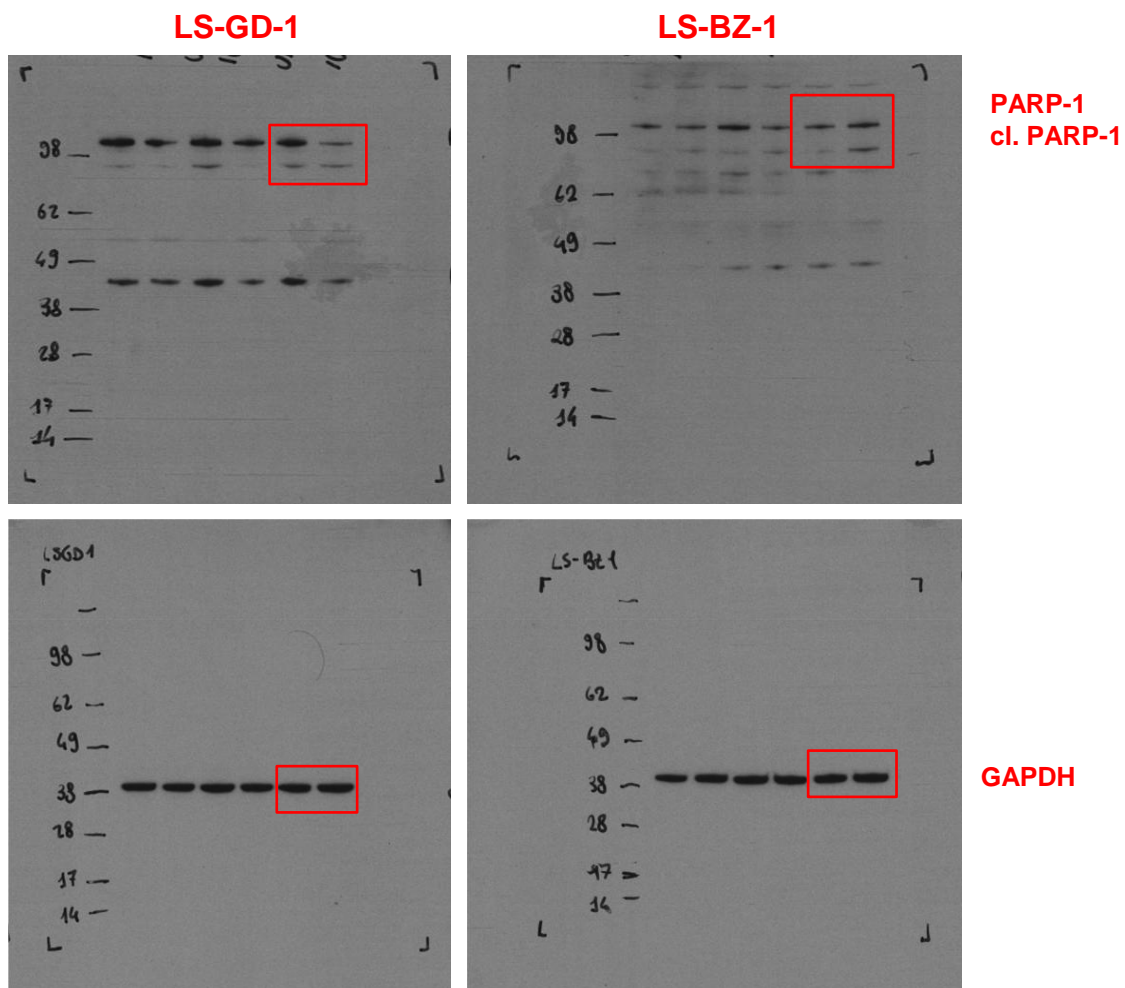
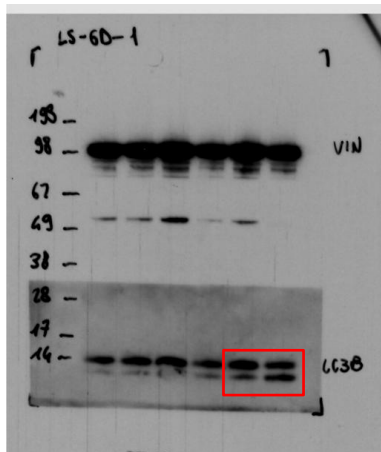
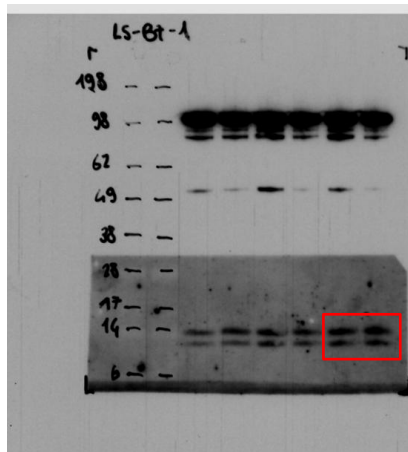


Figure S10. Full Western blot of Figure 4 (D).

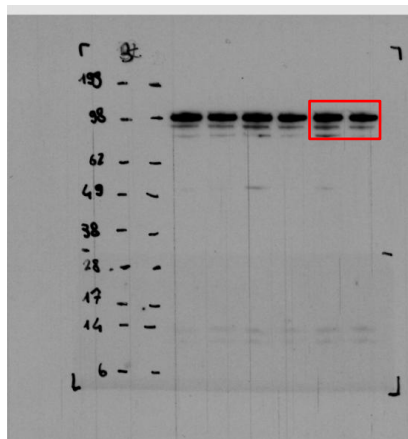
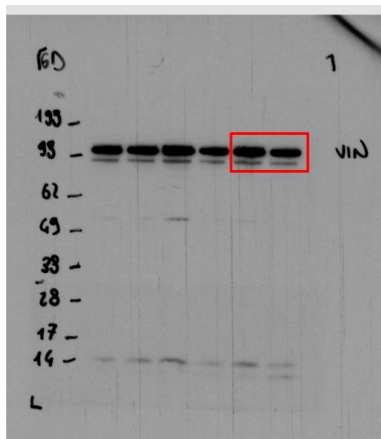
LS-GD-1



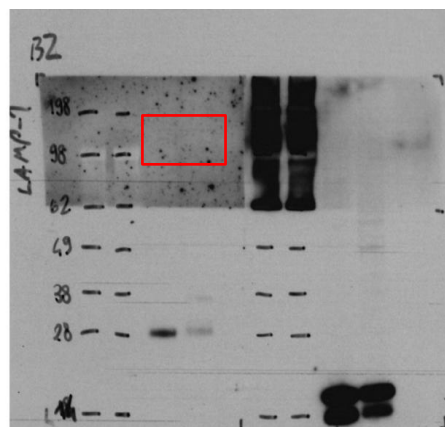
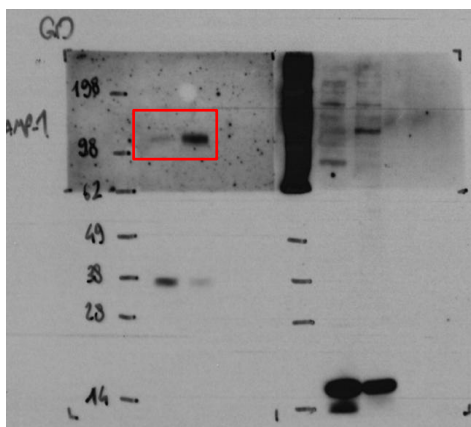
LS-BZ-1



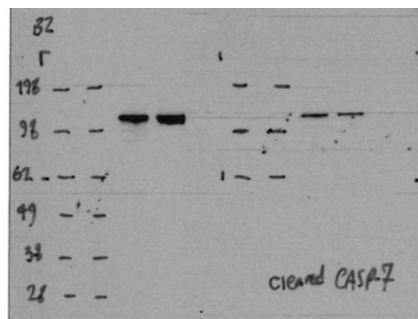
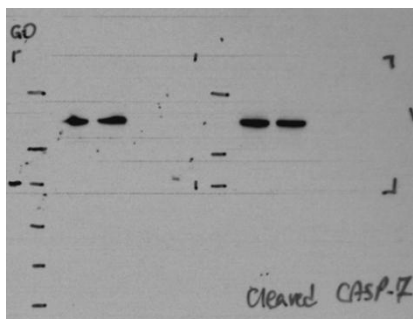
LC3B-I  
LC3B-II



VCL



LAMP-1



VCL