

Supplemental Table S1. Univariable Cox analysis of OS, RFS and DMFS Before PSM.

Variables	OS		RFS		DMFS	
	HR(95%CI)	<i>P</i>	HR(95%CI)	<i>P</i>	HR(95%CI)	<i>P</i>
Age (year)	0.992(0.966-1.019)	0.578	0.995(0.970-1.021)	0.714	1.003(0.976-1.030)	0.853
SER (day)	1.001(0.997-1.004)	0.771	1.000(0.997-1.004)	0.813	0.999(0.995-1.002)	0.474
Total chemo cycles (times)	1.120(0.946-1.326)	0.187	1.137(0.966-1.339)	0.123	1.032(0.881-1.208)	0.698
Chemo cycles before radiotherapy (times)	1.130(0.953-1.340)	0.161	1.129(0.960-1.328)	0.144	1.021(0.869-1.199)	0.803
Total radiotherapy time (day)	1.033(0.992-1.076)	0.116	1.029(0.989-1.071)	0.160	1.021(0.977-1.066)	0.353
Group						
Twice daily	1.000		1.000		1.000	
Sequential-hypo	0.502(0.235-1.074)	0.076	0.572(0.287-1.140)	0.112	0.546(0.275-1.084)	0.084
Age (year)						
<50	1.000		1.000		1.000	
≥50	0.640(0.357-1.147)	0.134	0.727(0.410-1.290)	0.276	0.702(0.401-1.229)	0.216
Sex						
Male	1.000		1.000		1.000	
Female	0.967(0.513-1.823)	0.918	0.937(0.509-1.725)	0.835	0.795(0.434-1.457)	0.458

ECOG PS						
0-1	1.000		1.000		1.000	
2-3	0.940(0.440-2.009)	0.874	0.853(0.266-2.740)	0.790	1.049(0.379-2.900)	0.927
Smoking						
Never smoker	1.000		1.000		1.000	
Former smoker	2.166(0.903-5.196)	0.084	2.368(1.000-5.612)	0.050	1.242(0.590-2.615)	0.568
Current smoker	2.222(0.960-5.143)	0.062	2.366(1.029-5.437)	0.043	1.307(0.646-2.643)	0.457
PCI						
no	1.000		1.000		1.000	
yes	1.034(0.541-1.976)	0.919	1.055(0.566-1.966)	0.866	0.755(0.424-1.347)	0.342
Introduction chem						
no	1.000		1.000		1.000	
yes	22.864(0.243-2150.682)	0.177	4.766(0.658-34.493)	0.122	4.760(0.658-34.428)	0.122
SER (day)						
<90	1.000		1.000		1.000	
≥90	1.504(0.807-2.801)	0.199	1.410(0.784-2.536)	0.251	1.105(0.629-1.942)	0.728
Total radiotherapy time (day)						

<24	1.000		1.000		1.000	
≥24	1.934(1.072-3.488)	0.028	1.857(1.051-3.280)	0.033	1.449(0.817-2.570)	0.205
Total chemo cycles (times)						
<4	1.000		1.000		1.000	
≥4	1.549(0.824-2.909)	0.174	1.551(0.845-2.846)	0.157	1.161(0.658-2.050)	0.606
Chemo cycles before radiotherapy (times)						
<2	1.000		1.000		1.000	
≥2	2.043(0.736-5.674)	0.170	1.808(0.721-4.536)	0.207	1.464(0.628-3.415)	0.377
T stage						
1-2	1.000		1.000		1.000	
3-4	1.203(0.600-2.412)	0.603	1.390(0.730-2.649)	0.317	0.934(0.471-1.853)	0.846
N stage						
0-1	1.000		1.000		1.000	
2-3	2.178(0.928-5.110)	0.074	2.472(1.058-5.776)	0.037	2.742(1.175-6.400)	0.020
AJCC stage						
I- II	1.000		1.000		1.000	
III	2.158(0.920-5.062)	0.077	2.374(1.016-5.550)	0.046	2.696(1.155-6.289)	0.022

Comorbidity

No	1.000		1.000		1.000	
Yes	1.486(0.810-2.723)	0.201	1.259(0.649-2.282)	0.449	1.454(0.819-2.581)	0.201

Hazard ratios and 95% confidence intervals were calculated by a stratified Cox proportional hazards model. Abbreviations: OS, overall survival; RFS, Recurrence-free survival; DMFS, Distant Metastasis-free Survival; ECOG PS: Eastern Cooperative Oncology Group Performance Status; PCI, Prophylactic Cranial Irradiation; SER, from the date of Start treatment to the End Radiotherapy ; P values less than 0.05 are highlighted in bold.

Supplemental Table S2. Multivariable Cox analysis of OS, RFS and DMFS Before PSM.

Variables	OS		RFS		DMFS	
	HR(95%CI)	<i>P</i>	HR(95%CI)	<i>P</i>	HR(95%CI)	<i>P</i>
Group						
Twice daily	1.000				1.000	
sequential-Hypo	0.353(0.161-0.775)	0.009			0.483(0.242-0.962)	0.039
Total radiotherapy time (day)						
<24	1.000		1.000			
≥24	2.452(1.335-4.503)	0.004	1.774(1.004-3.132)	0.048		
AJCC stage						
I- II	1.000					

III	2.310(0.982-5.432)	0.055		
T stage				
1-2				
3-4				
N stage				
0-1		1.000	1.000	
2-3		2.369(1.013-5.543)	0.047	3.032(1.295-7.103)
				0.011

Hazard ratios and 95% confidence intervals were calculated by a stratified Cox proportional hazards model. Abbreviations: OS, overall survival; RFS, Recurrence-free survival; DMFS, Distant Metastasis-free Survival; PS: Performance Status; P values less than 0.05 are highlighted in bold.

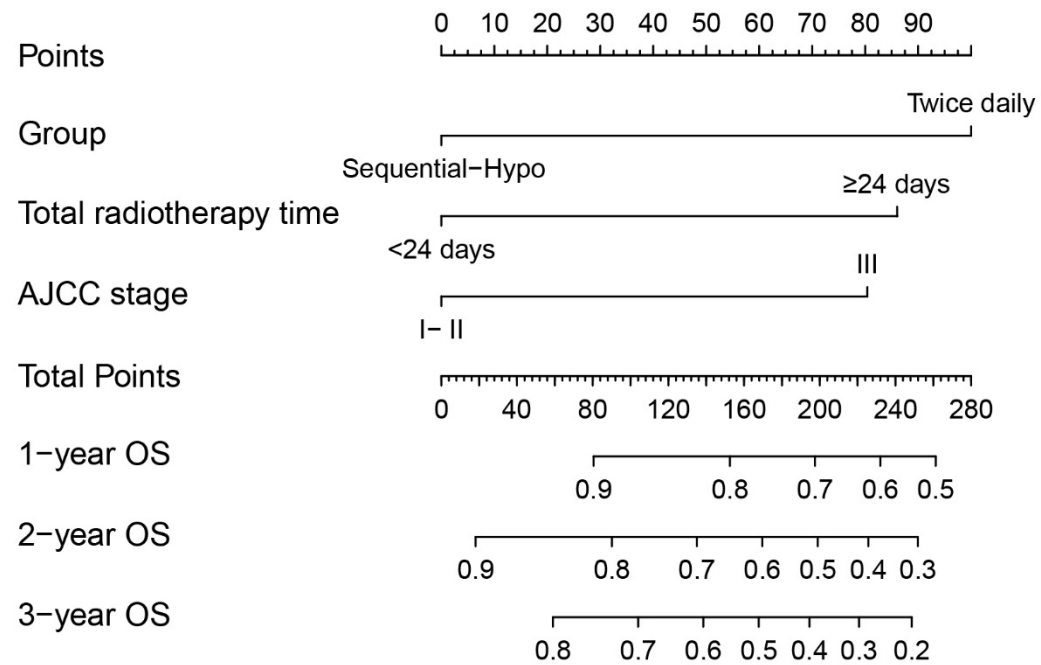


Figure S1. The nomogram of OS before PSM.

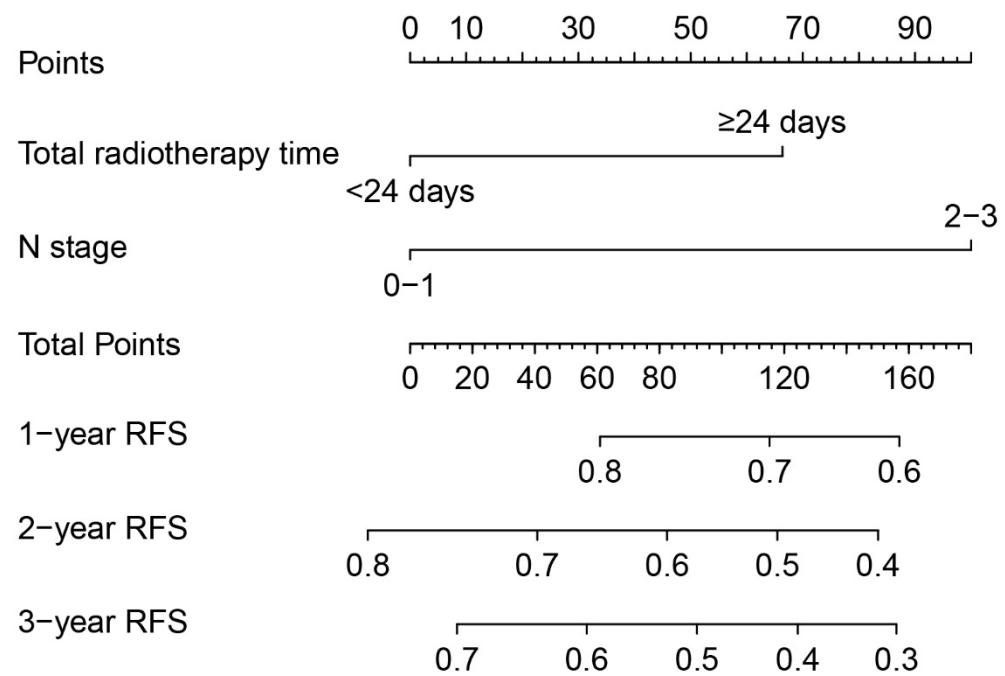


Figure S2. The nomogram of RFS before PSM.

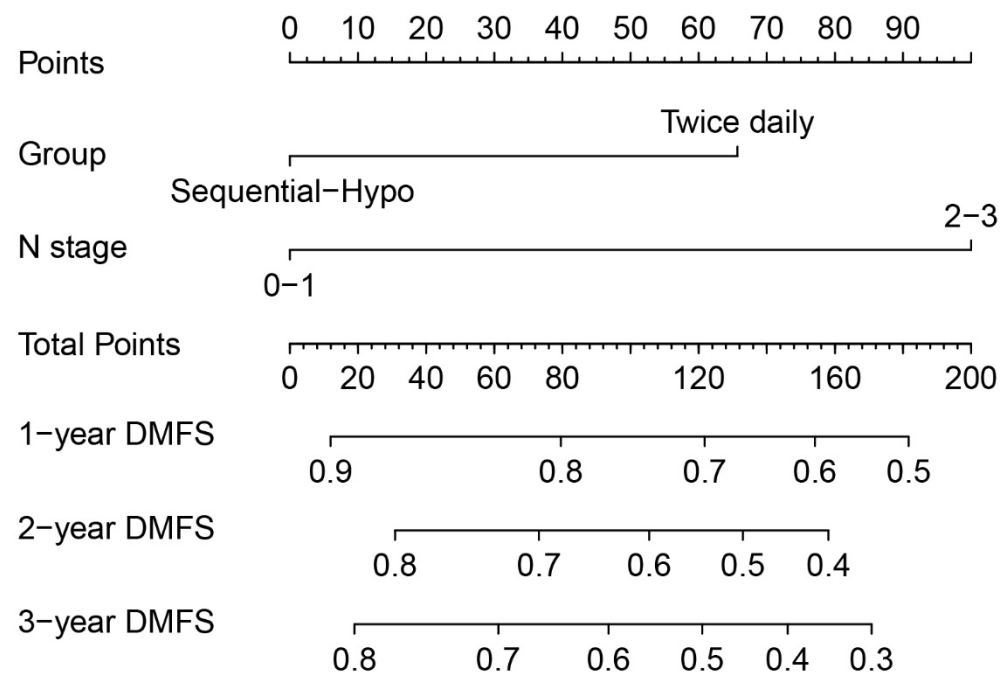


Figure S3. The nomogram of DMFS before PSM.

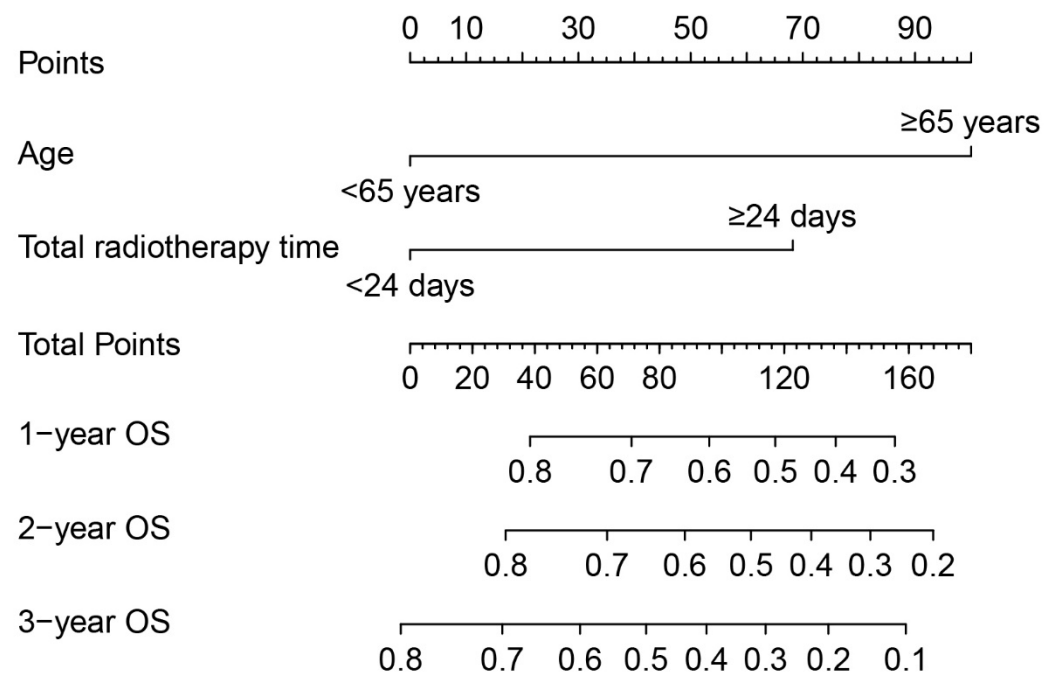


Figure S4. The nomogram of OS after PSM.

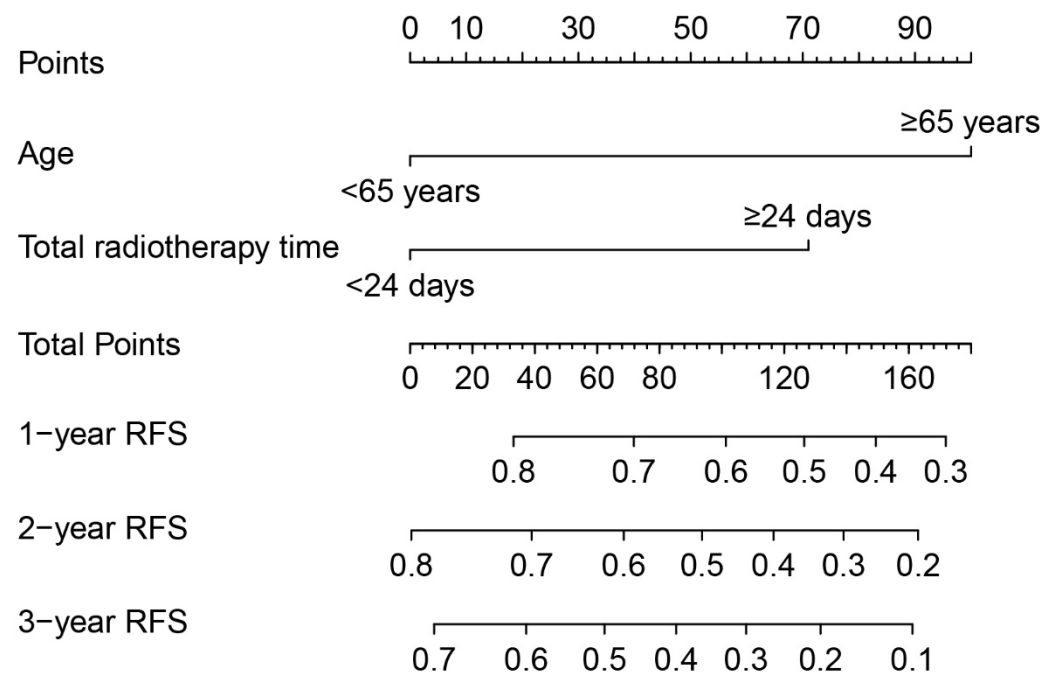


Figure S5. The nomogram of RFS after PSM.