

Supplementary Materials

Figure S1. Uncropped western blot for HIF-1 α expression in three different cell lines; 22Rv1, 22Rv1-CI, 22Rv1-PCI.

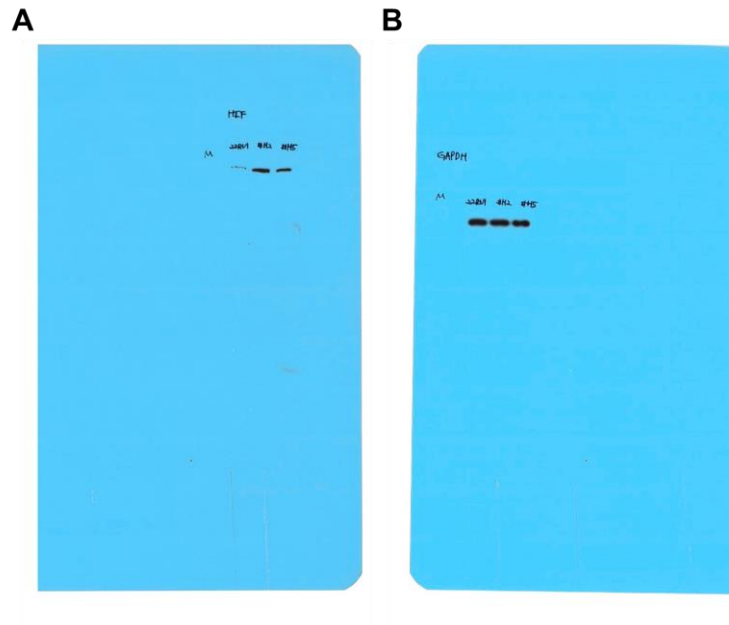


Figure S1. Uncropped western blot for HIF-1 α expression in three different cell lines; 22Rv1, 22Rv1-CI, 22Rv1-PCI. (A) Uncropped western blot for HIF-1 α . (B) Uncropped western blot for GAPDH.

Figure S2. Uncropped PCR for COL13A1 expression in three different cell lines; 22Rv1, 22Rv1-CI, 22Rv1-PCI.

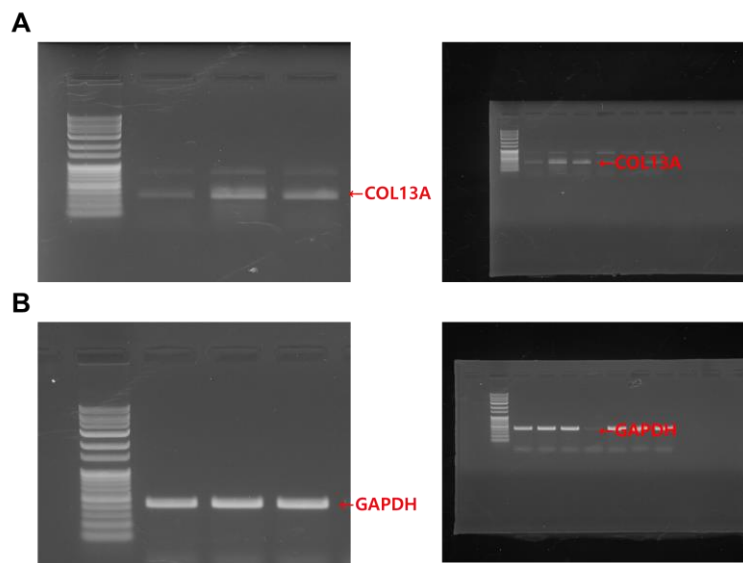


Figure S2. Uncropped western blot for HIF-1 α expression in three different cell lines; 22Rv1, 22Rv1-CI, 22Rv1-PCI. (A) Uncropped PCR for COL13A1. (B) Uncropped PCR for GAPDH.

Figure S3. Uncropped PCR for COL13A1 expression in three different cell lines; LNCaP, DU145 and PC3 prostate cancer cell lines.

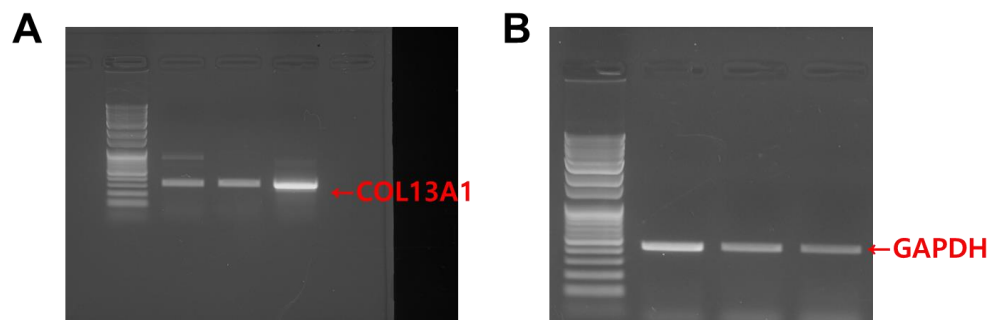


Figure S3. Uncropped PCR for COL13A1 expression in three different cell lines; LNCaP, DU145 and PC3 prostate cancer cell lines. (A) Uncropped PCR for COL13A1. (B) Uncropped PCR for GAPDH.