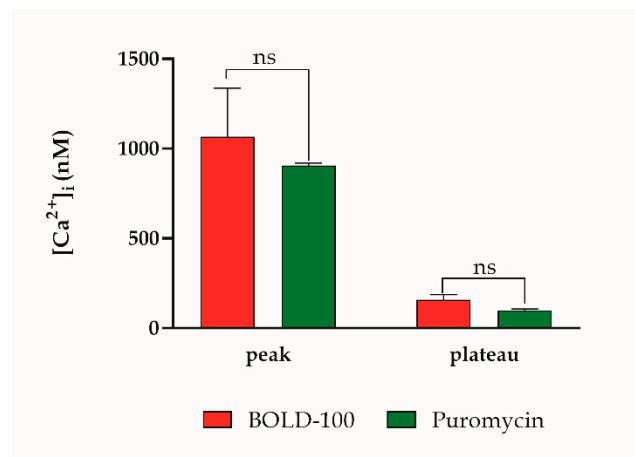
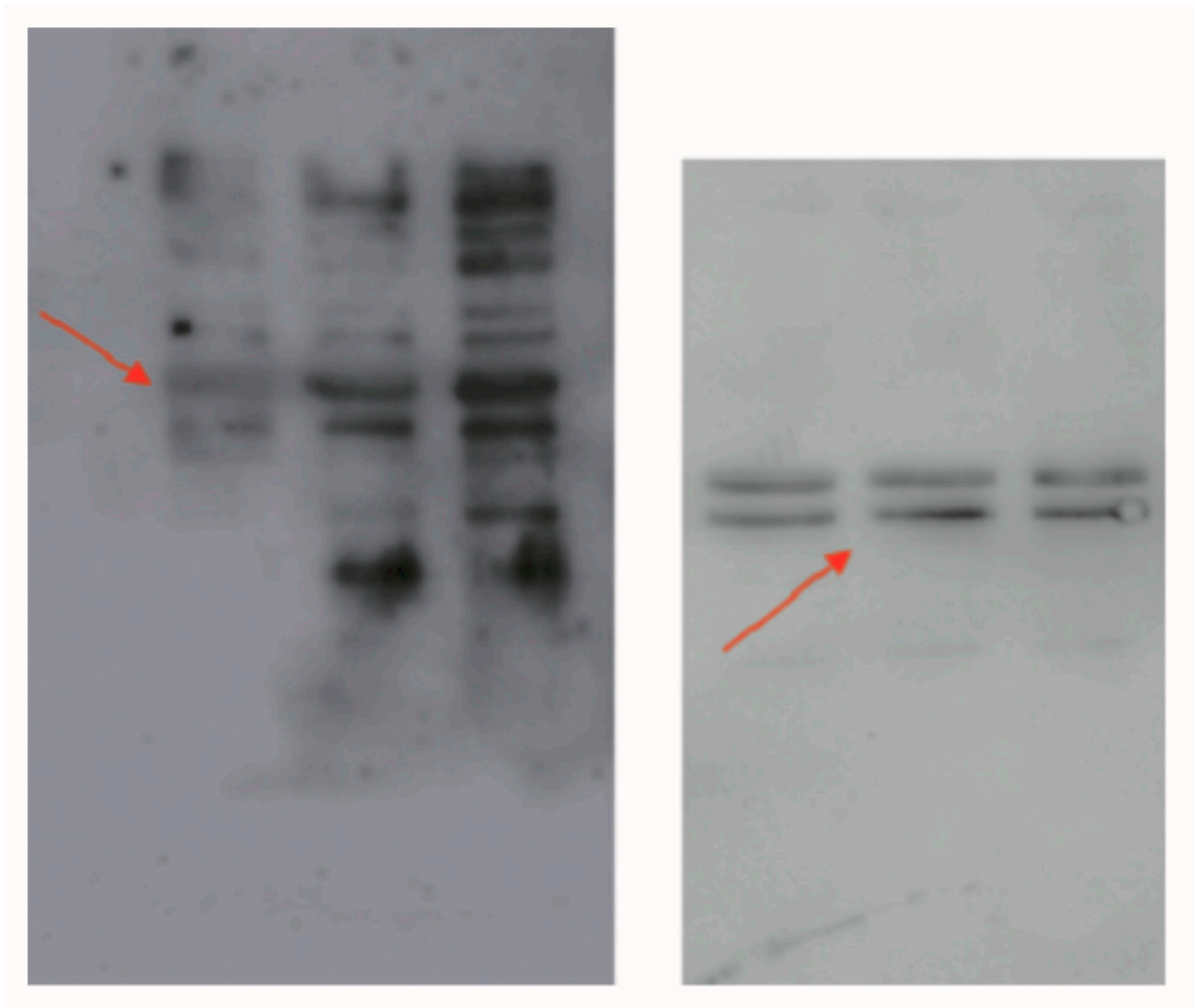


**Supplementary Figure S1. Pretreatment with caffeine or NAC reduced BOLD-100 cytotoxicity in REN cells.** Cell viability was evaluated in terms of EC<sub>50</sub> at 24 h. Each value comes from the results of three independent experiments. Asterisks on bars indicate statistical differences (\*\*\*\* p < 0.0001, One-way ANOVA follow by Dunnett post-test).



**Supplementary Figure S2. Comparison of [Ca<sup>2+</sup>]<sub>i</sub> variation recorded at 5-s intervals in REN cells after BOLD-treatment or 2 μM puromycin.** Data are means± s.e.m. of Ca<sup>2+</sup> peak response recorded in different cells. Number of cells: 40 cells from 3 exp for each condition. Statistics indicate differences at peak or plateau level for each condition (ns not significant, Two-way ANOVA follow by Bonferroni correction).



uncropped blots for Figure 4D