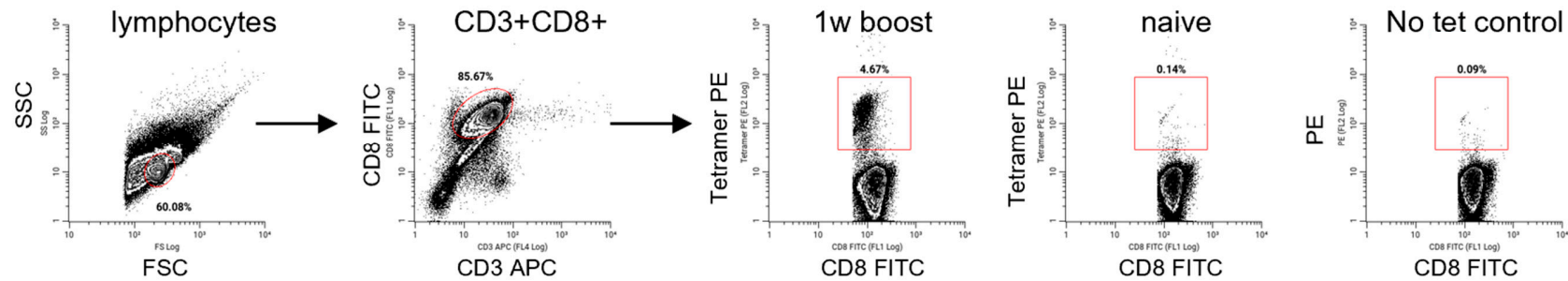


Supplemental Figure S1



**Supplemental Figure S1.** Flow cytometry gating schema for CD8<sup>+</sup>Tetramer<sup>+</sup> T cell identification. Splenocytes from experimental mice were isolated and stained with antibodies to CD3, CD8, and HPV16 E7(49-57) MHC tetramer reagent. For each sample, a no-tetramer negative control was stained only with CD3 and CD8 antibodies. Lymphocytes were gated on FSC/SSC. Frequency of tetramer positive CD3<sup>+</sup>CD8<sup>+</sup> T cells was determined after subtraction of the frequency of events in the same gate in the no-tetramer control-stained sample. Shown is a representative example of tetramer positive events in the 1 week PBI group and the naïve group, along with the no-tetramer control stain.