

Figure S1: Overall survival rate (OS) of stage II/III gastric cancer (GC) patients based on the expression of each candidate's survival risk stratification marker in 255 patients.

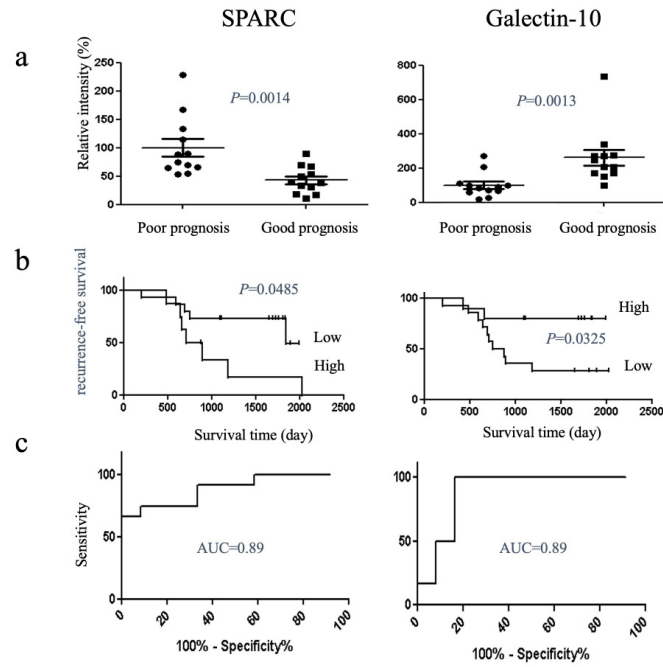


Figure S2: Results of the evaluation of candidate survival risk stratification markers by proteomic analysis using liquid chromatography-mass spectrometry (LC-MS)/MS.

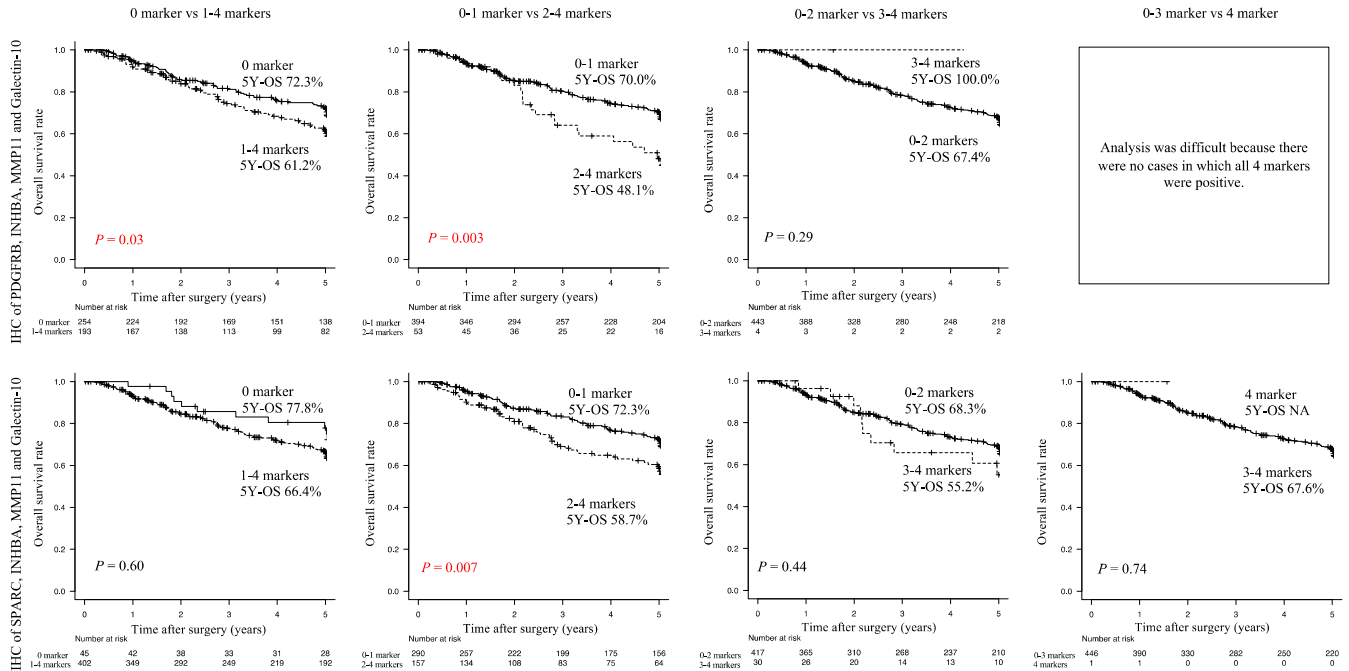


Figure S3: Overall survival rate (OS) of stage II/III gastric cancer (GC) patients stratified according to the combination of survival risk stratification marker expression based on the number of positive markers.

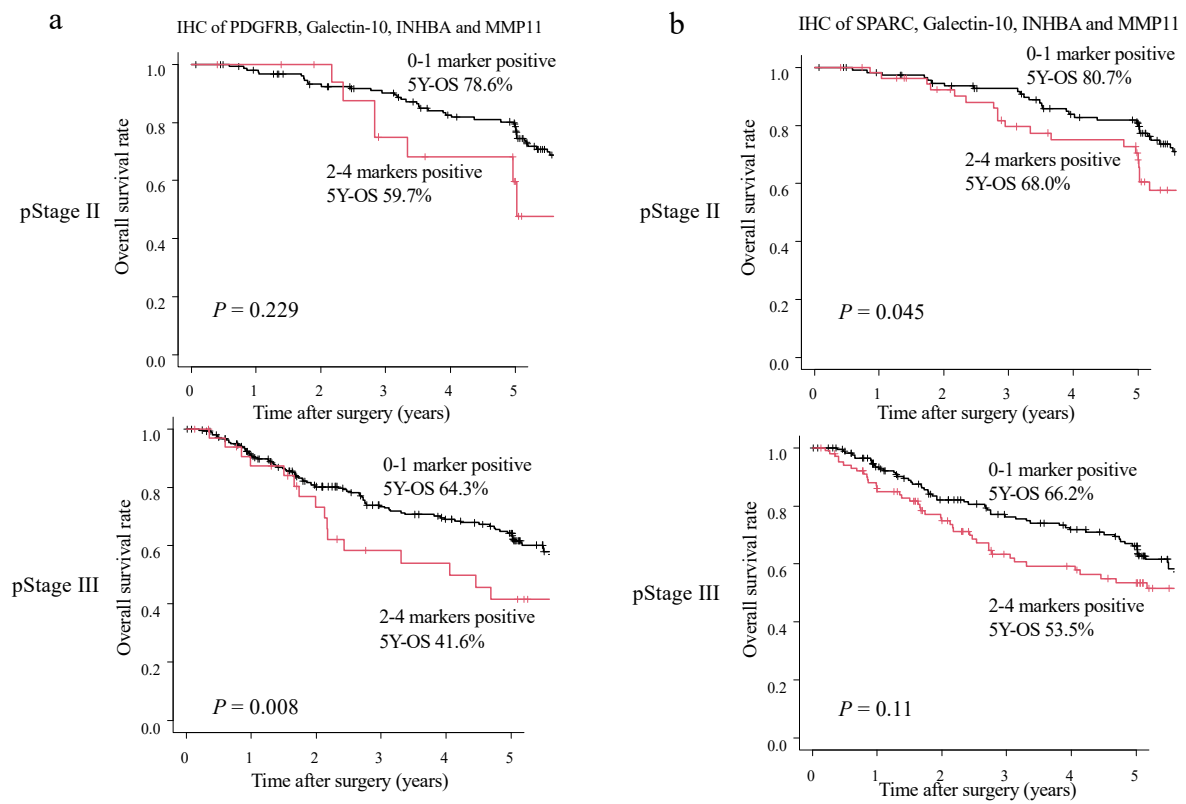


Figure S4: Overall survival (OS) of stage II/III gastric cancer (GC) patients according to the expression of a combination of risk stratification markers.