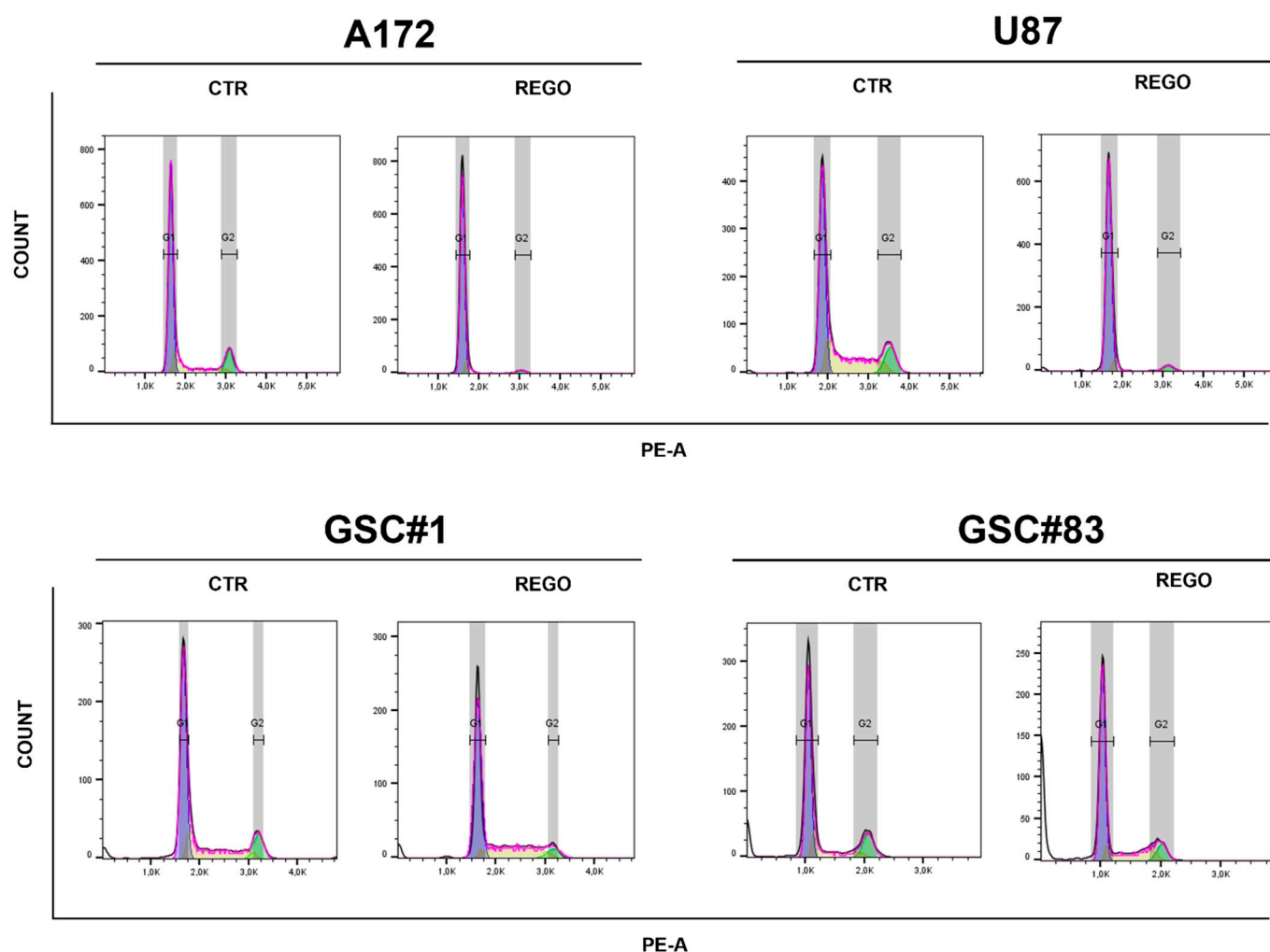
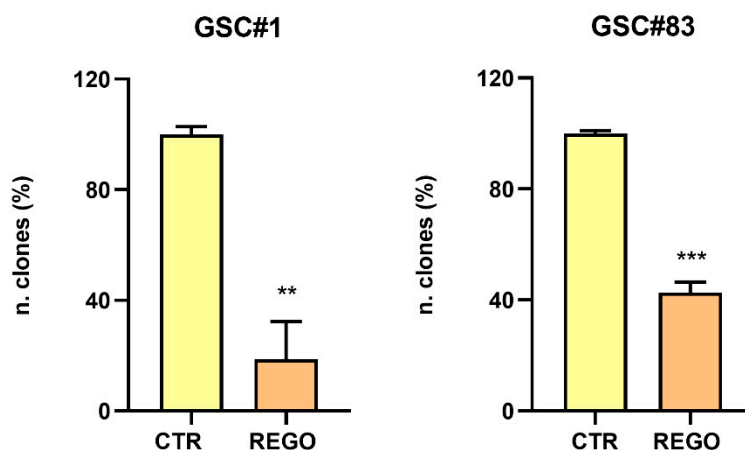


Supplementary Material: Characterization of Glioblastoma Cells Response to Regorafenib

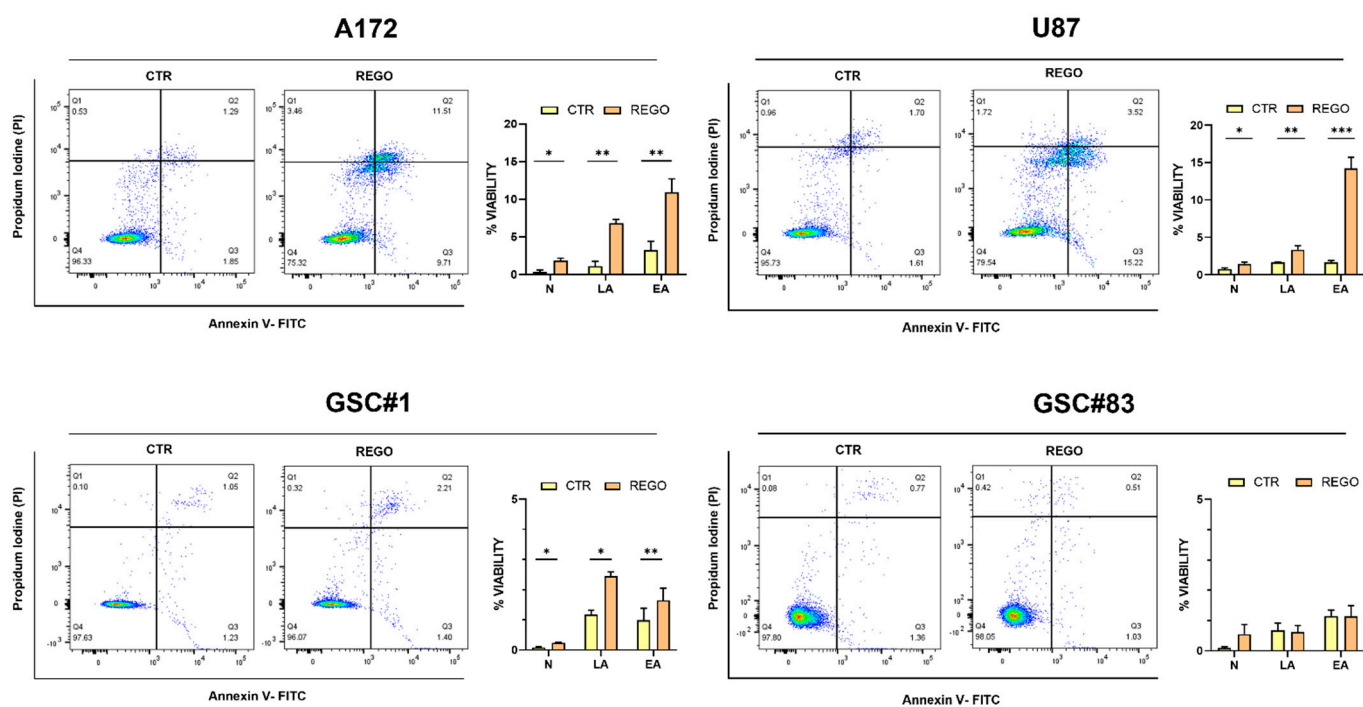
Maria Patrizia Mongiardi, Mariachiara Buccarelli, Alessia Formato, Elisa Orecchini, Maria Salbini, Valentina Ricci, Tiziana Orsini, Sabrina Putti, Silvia Chiesa, Lucia Ricci-Vitiani, Quintino Giorgio D'Alessandris, Roberto Pallini, Andrea Levi and Maria Laura Falchetti



Supplementary Figure S1. FACS profiles of propidium iodide-labeled cells.

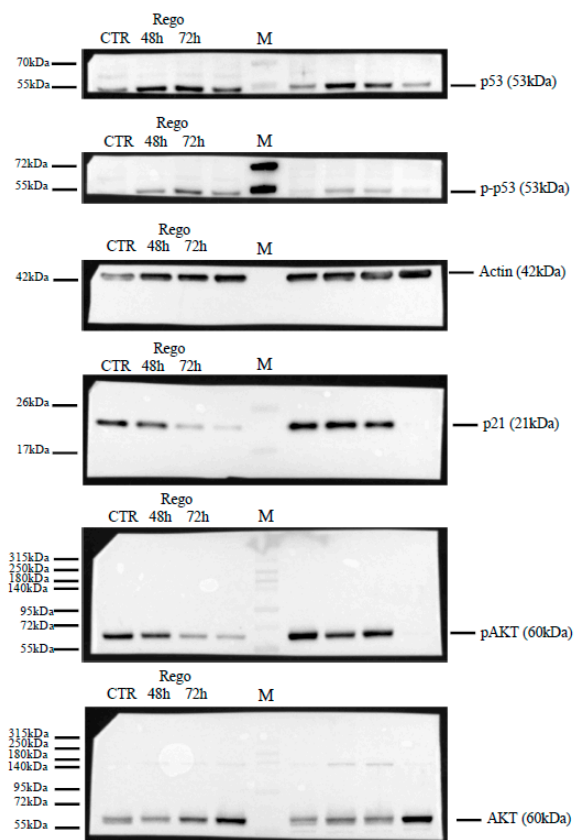


Supplementary Figure S2. Clonogenesis assay on GSC cells. Regorafenib impairs GSC ability to develop spheres. ** p value < 0.01; *** p value < 0.001.

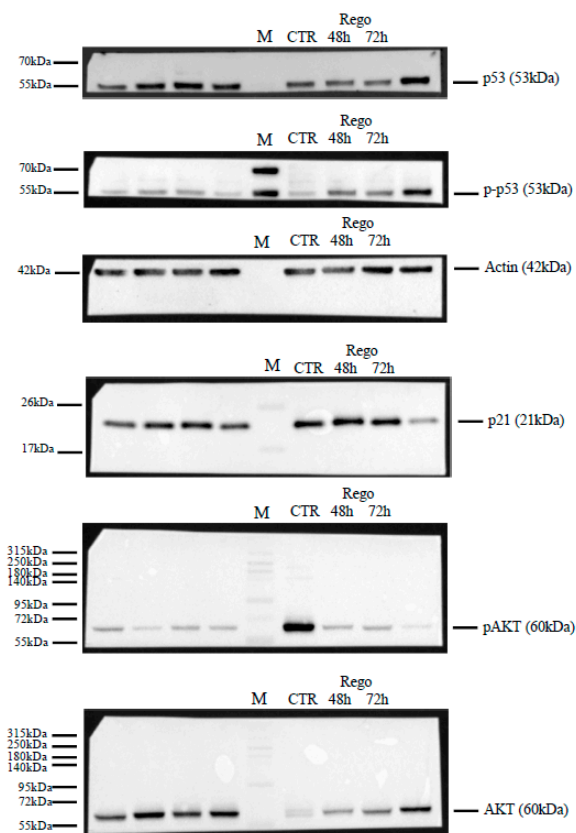


Supplementary Figure S3. Annexin staining of cells treated with regorafenib for 24 hours. Cells were double stained by Annexin V and by Propidium iodide, for apoptotic and dead cells labeling, respectively. N: necrotic cells; LA: late apoptosis; EA: early apoptosis. * p value < 0.05; ** p value < 0.01; *** p value < 0.001.

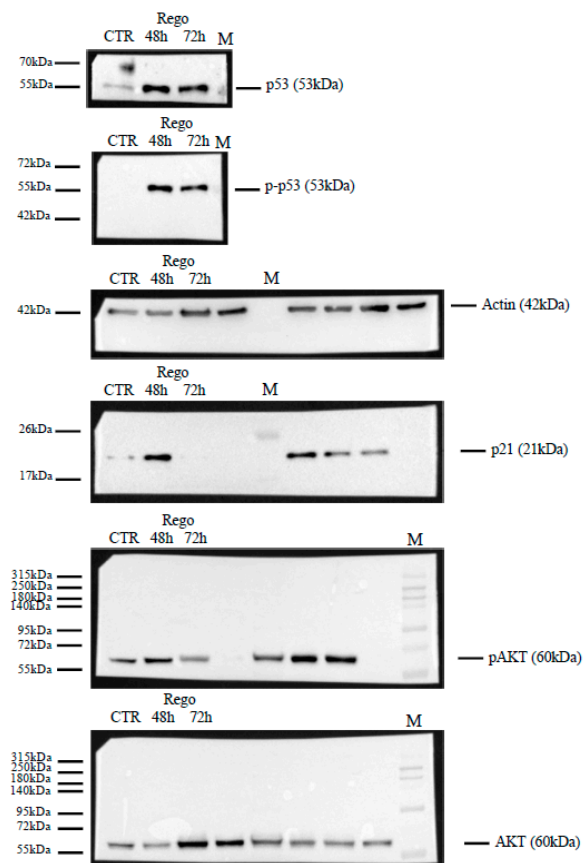
U87



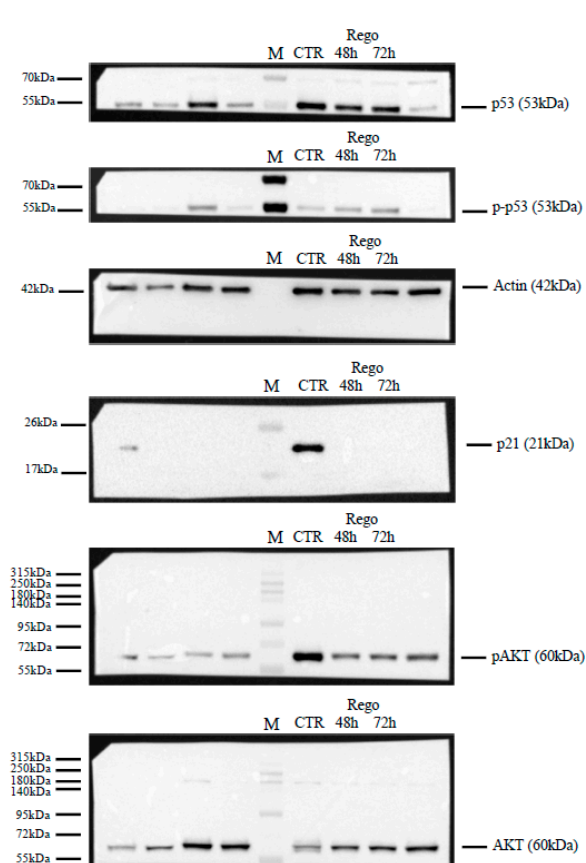
A172



GSC1



GSC83



U87		A172		GSC1		GSC83	
P-P53		P-P53		P-P53		P-P53	
CTR 48h	1	CTR 48h	1	CTR 48h	1	CTR 48h	1
REGO 48h	11,05	REGO 48h	2,48	REGO 48h	126,97	REGO 48h	1,5
REGO 72h	25,05	REGO 72h	2,31	REGO 72h	91,78	REGO 72h	2,3
P53		P53		P53		P53	
CTR 48h	1	CTR 48h	1	CTR 48h	1	CTR 48h	1
REGO 48h	2,89	REGO 48h	0,9	REGO 48h	4,68	REGO 48h	0,53
REGO 72h	3,12	REGO 72h	0,8	REGO 72h	4,6	REGO 72h	0,6
P-P53/P53 TOT		P-P53/P53 TOT		P-P53/P53 TOT		P-P53/P53 TOT	
CTR 48h	1	CTR 48h	1	CTR 48h	1	CTR 48h	1,00
REGO 48h	3,82	REGO 48h	2,76	REGO 48h	27,13	REGO 48h	2,83
REGO 72h	8,03	REGO 72h	2,89	REGO 72h	19,95	REGO 72h	3,83
P21		P21		P21		P21	
CTR 48h	1	CTR 48h	1	CTR 48h	1	CTR 48h	1
REGO 48h	0,8	REGO 48h	1,14	REGO 48h	3,47	REGO 48h	0
REGO 72h	0,21	REGO 72h	0,98	REGO 72h	0,22	REGO 72h	0
ACTIN		ACTIN		ACTIN		ACTIN	
CTR 48h	1	CTR 48h	1	CTR 48h	1	CTR 48h	1
REGO 48h	1,14	REGO 48h	0,77	REGO 48h	1	REGO 48h	0,78
REGO 72h	1,09	REGO 72h	0,74	REGO 72h	1,87	REGO 72h	0,71
P21/ACTIN		P21/ACTIN		P21/ACTIN		P21/ACTIN	
CTR 48h	1	CTR 48h	1	CTR 48h	1	CTR 48h	1
REGO 48h	0,70	REGO 48h	1,48	REGO 48h	3,47	REGO 48h	0,00
REGO 72h	0,19	REGO 72h	1,32	REGO 72h	0,12	REGO 72h	0,00
P-AKT		P-AKT		P-AKT		P-AKT	
CTR 48h	1	CTR 48h	1	CTR 48h	1	CTR 48h	1
REGO 48h	0,75	REGO 48h	0,09	REGO 48h	1,47	REGO 48h	0,26
REGO 72h	0,28	REGO 72h	0,09	REGO 72h	0,96	REGO 72h	0,27
AKT		AKT		AKT TOT		AKT TOT	
CTR 48h	1	CTR 48h	1	CTR 48h	1	CTR 48h	1
REGO 48h	0,84	REGO 48h	2,68	REGO 48h	0,78	REGO 48h	1,21
REGO 72h	1,33	REGO 72h	3,9	REGO 72h	3,23	REGO 72h	1,3
P-AK/AKT TOT		P-AK/AKT TOT		P-AKT/AKT TOT		P-AKT/AKT TOT	
CTR 48h	1	CTR 48h	1	CTR 48h	1	CTR 48h	1
REGO 48h	0,89	REGO 48h	0,03	REGO 48h	1,88	REGO 48h	0,21
REGO 72h	0,21	REGO 72h	0,02	REGO 72h	0,30	REGO 72h	0,21

Supplementary Figure S4. Original western blot.