

Table S1. Hazard ratio with 95% confidence limits from Cox proportional hazards models in the group 4 (*n* = 1159) on non imputed data.

		M0			M1				
Characteristic		N	Deaths (N)	HR	95% CI	P value	HR	95% CI	P value
Treatment first									
	PTR	899	674	1	Ref	0.50	1	Ref	0.61
	CT	260	173	0.95	0.80 to 1.11		1.05	0.87 to 1.26	
Sex									
	Men	677	577	1	Ref	0.36			
	Women	482	424	1.07	0.93 to 1.22				
Age (years)									
	<60	327	268	1	Ref	<0.001	1	Ref	<0.001
	60-69	367	305	1.12	0.93 to 1.34		1.08	0.89 to 1.31	
	70-79	359	326	1.66	1.39 to 1.98		1.41	1.13 to 1.75	
	>= 80	106	102	2.37	1.86 to 3.00		2.06	1.56 to 2.70	
Year of diagnosis									
	2006-2008	322	269	1	Ref	0.04	1	Ref	0.11
	2009-2012	414	324	0.85	0.73 to 1.00		0.84	0.71 to 1.00	
	2013-2016	423	408	0.81	0.68 to 0.96		0.85	0.71 to 1.02	
Departement									
	Calvados	441	371	1	Ref	0.27			
	Finistere	718	630	1.08	0.94 to 1.24				

Charlson comorbidity index

0	306	253	1	Ref	<0.001	1	Ref	0.01
1 ou 2	369	300	0.99	0.83 to 1.19		1.02	0.84 to 1.23	
>2	390	364	1.59	1.34 to 1.90		1.32	1.08 to 1.60	

Localisation of primary tumor

colic	937	811	1	Ref	0.47			
rectal	222	190	0.94	0.79 to 1.11				

Localisation of metastatic disease

intra-abdominal	860	723	1	Ref	<0.001	1	Ref	<0.001
intra-thoracic	63	55	0.88	0.73 to 1.32		0.92	0.67 to 1.25	
thoraco-abdominal	214	204	1.57	1.33 to 1.85		1.58	1.33 to 1.88	

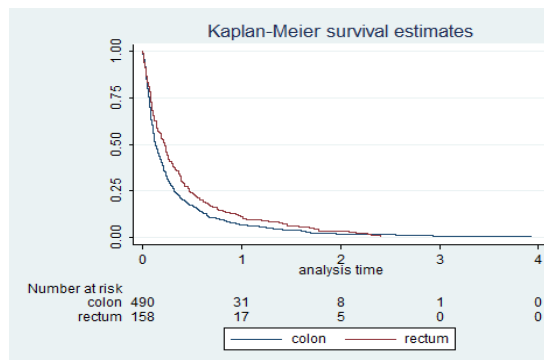
Number of metastatic site

unique	819	677	1	Ref	<0.001			
multiple	340	324	1.95	1.69 to 2.24				

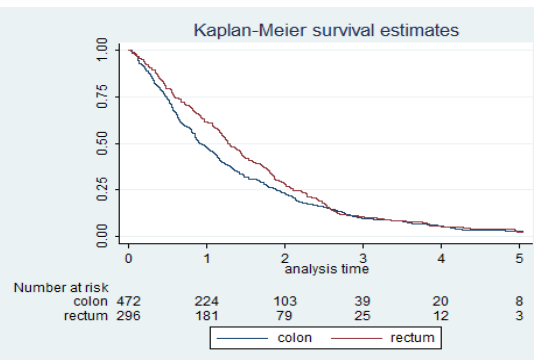
EDI quintile

1.2	573	501	1	Ref	0.91			
3.4.5	582	496	1.01	0.88 to 1.15				

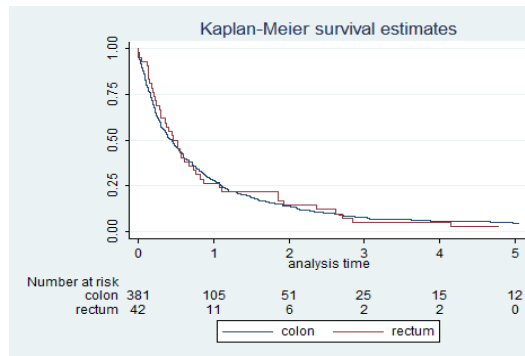
Groupe 1 : No treatment or only RT



Groupe 2 : only CT or CT +RT



Groupe 3 : Only PTR or PTR + RT



Groupe 4 : PTR + CT or PTR+ CT+ RT

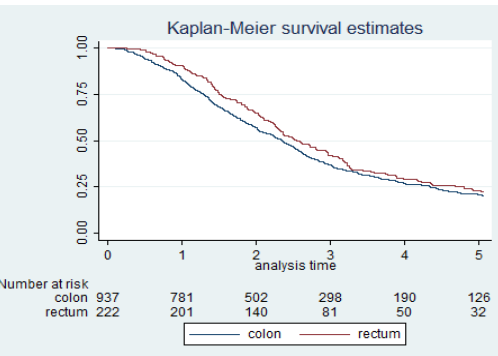


Figure S1. Kaplan-Meier Curves for each treatment groups according to sub-localisation (Colon Vs Rectum).