

Supplementary Figures

Figures S1-S4

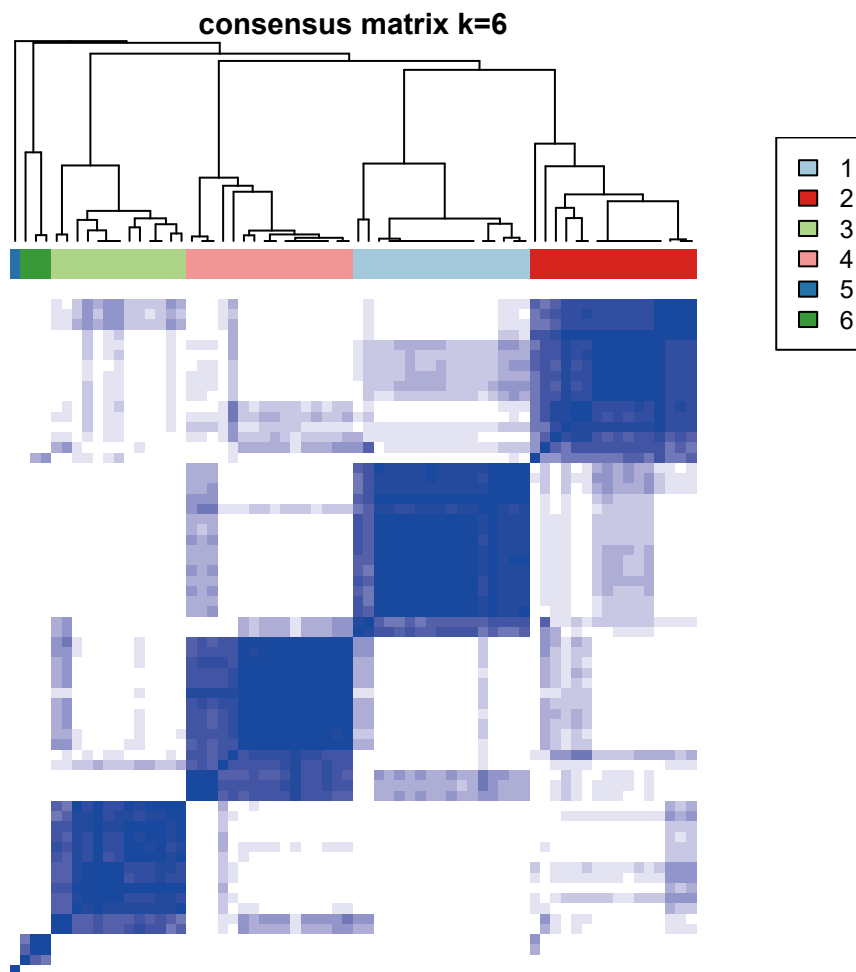
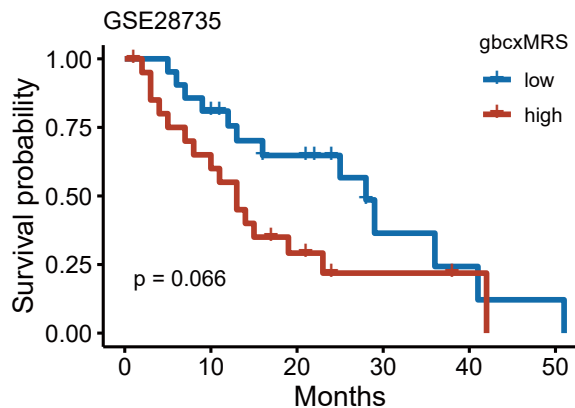


Figure S1 Consensus clustering of the ICGC cohort (n=66), k=6 was selected.

a



b

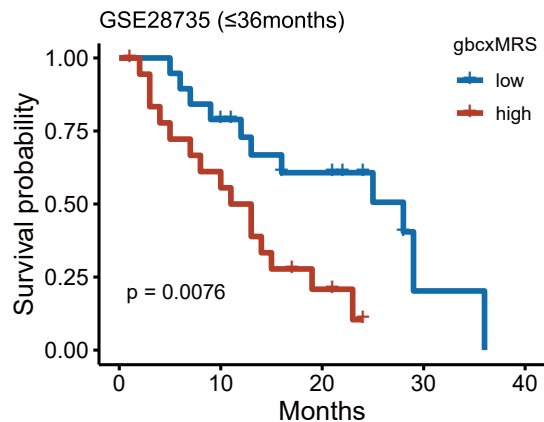


Figure S2 Validation on GSE28735. (a) All patients were included (n=42). (b) Patients with OS less than 36 months were included (n=38).

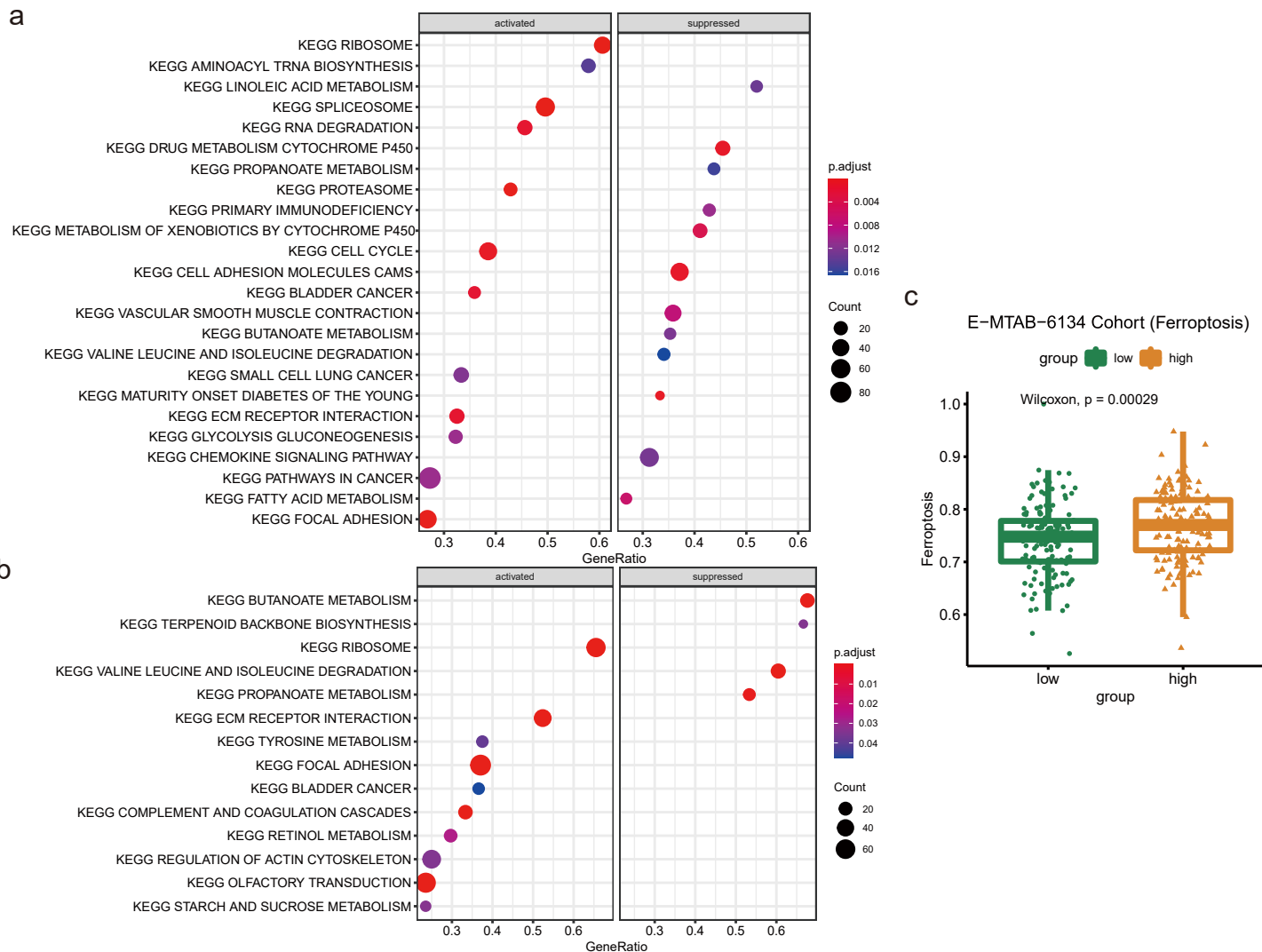


Figure S3 Functional Enrichment for gbcxMRS. (a) Gene Set Enrichment analysis (GSEA) of E-MTAB-6134 cohort. (b) GSEA of ICGC cohort. (c) ssGSEA enrichment score of ferroptosis between high and low gbcxMRS groups.

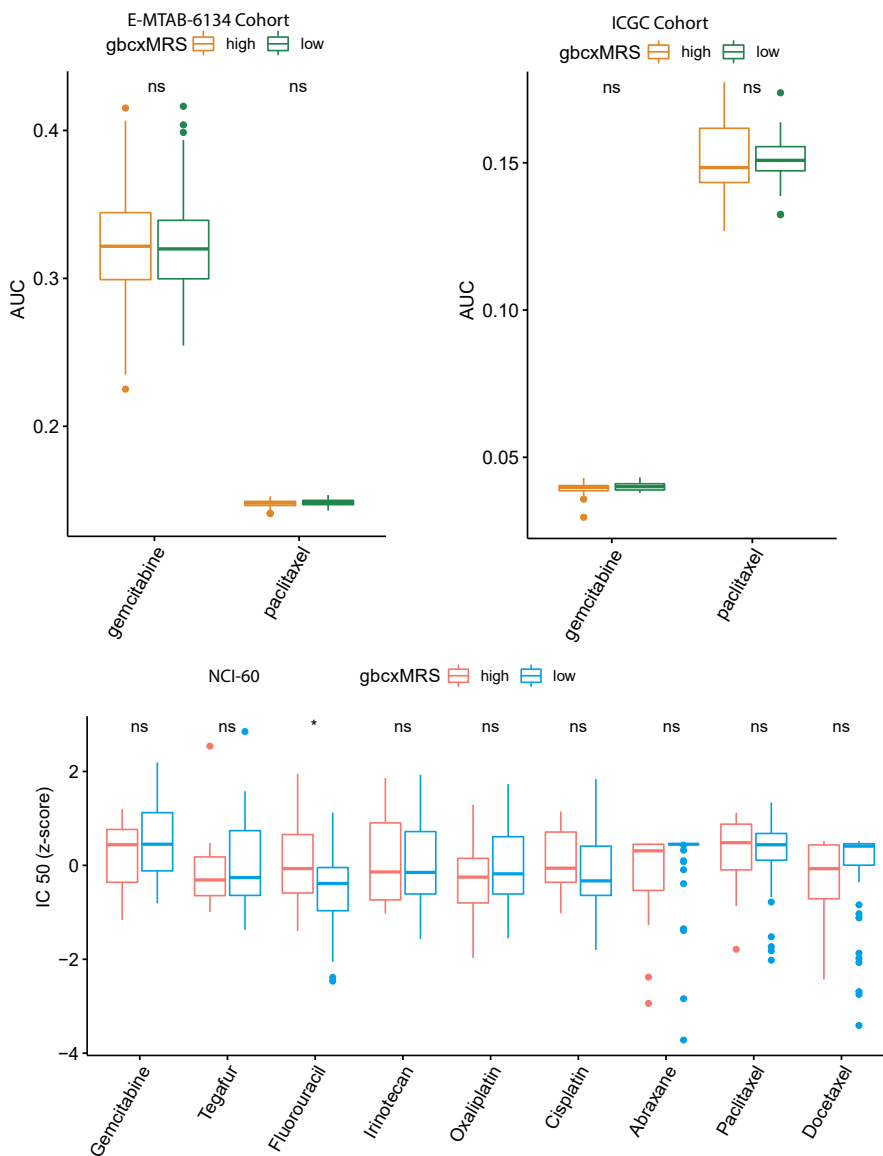


Figure S4 The drug sensitivity analysis with gbcxMRS. (a-b) There is no significant difference between gbcxMRS groups in the drug sensitivity of gemcitabine and paclitaxel. (c) The low gbcxMRS group showed the significant sensitivity of 5-fluorouracil.