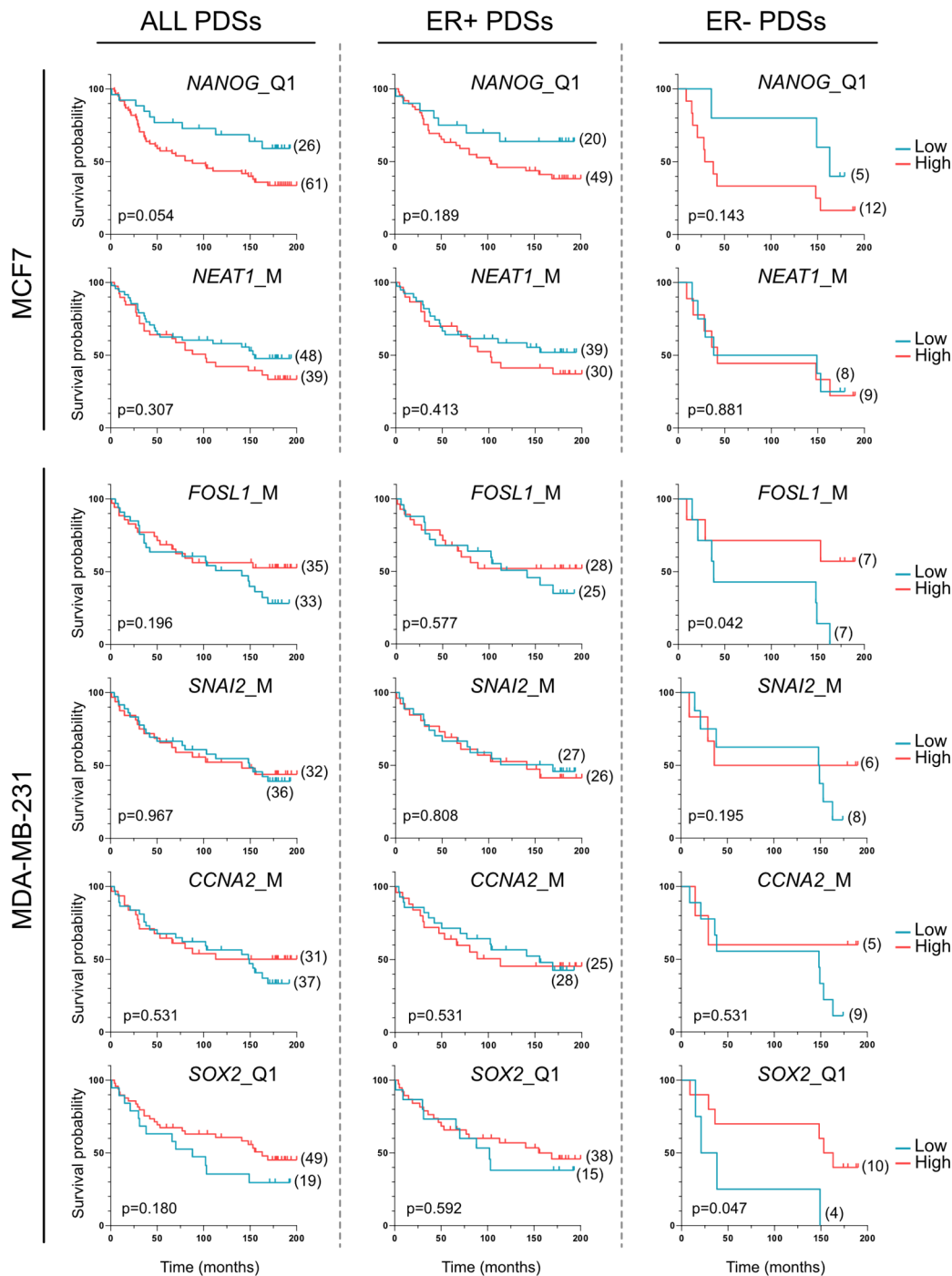


**Supplementary Figure S1. Spearman's correlation heatmaps.** Heatmap plotting the Spearman's correlation coefficients ( $\rho$ -values) and  $p$ -values between all the analysed genes and the three cell lines included in this study. (M, MCF7; T, T-47D; 231, MDA-MB-231). (Detailed information in Supp. Table S5)



**Supplementary Figure S2. Kaplan-Meier plots illustrating the relationship between gene expression and disease-free survival (DFS) of patients whose tumors were used to generate the patient-derived scaffolds PDSs (blue, low expression; red, high expression), for the genes that were significant in the multivariable analyses. The number of patients is indicated within brackets in each graph. Log-rank statistical test was applied to compare survival in different strata (M, median; Q1, first quartile; Q3, third quartile), the best cut-off and the *P*-value are shown (detailed information in Supp. Table S7). *p*-values <0.05 were considered significant.**