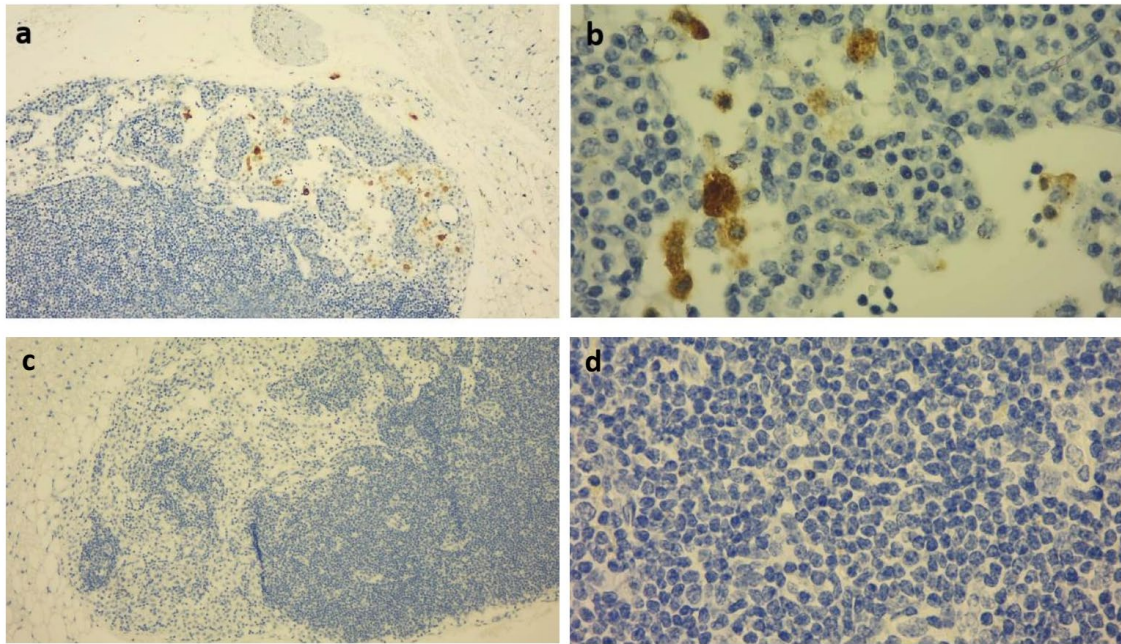


## Supplementary Materials



**Figure S1.** Histological analysis of lymph node samples, DAB-hematoxylin. (a). Lymph node with mast cell infiltration observed in mice, 100 $\times$ . (b). Same lymph node from figure a. with high magnification 500 $\times$ . (c). Lymph node without primary antibody, 100 $\times$ . (d). Same lymph node from figure c. with high magnification 500 $\times$ .