

Supplementary Figures and Tables:

Table S1: Clinical characteristic of patients with EAOC used for tissue immunohistochemistry.

Patient #	Age	Stage	Chemotherapy (Y/N)	Radiation (Y/N)	Time from diagnosis to last seen at the clinic (months)
1	45	IA	Y	N	78
2	48	IC3	Y	N	102
3	41	IC1	Y	N	29
4	51	IA	Y	N	70
5	48	IIA	Y	N	204
6	50	IC3	Y	N	148
7	64	IA	Y	N	124
8	66	IIB	Y	N	74
9	49	IIB	Y	Y	92
10	53	IC1	N	N	1
11	43	IA	Y	N	46
12	82	IIB	-	-	1
13	53	IC3	Y	N	15
14	46	IC1	N	N	14
15	50	IC1	N	N	24
16	51	IIA	Y	N	9
17	45	IC1	Y	N	N/A

Table S2. Correlation (r^2 and p values) between the staining intensities in patients with EAO. n=17 patients. S-stroma; T-tumor; Hx-hemopexin, HO-1-heme oxygenase-1.

p values	Hx-T	CD45-T	HO-1-T	Hx-S	HO-1-S	Hx Endo	CD45 Endo	HO-1 Endo	Hx Endo-S	HO-1 Endo-S	Age	Chem o	Radiati on	Stag e
Hx-T		0.957	0.924	0.011		0.040	0.965	0.636	0.158	0.177	0.908	0.780	0.470	0.502
CD45-T	0.957		0.691	0.163	0.416	0.532	0.115	0.708	0.914	0.570	0.197	0.559	0.515	0.542
HO-1-T	0.924	0.691		0.696	0.002	0.465	0.067	0.357	0.152	0.846	0.335	0.853	0.879	0.634
Hx-S	0.011	0.163	0.696		0.909	0.354	0.586	0.646	0.173	0.612	0.939	0.756	0.096	0.037
HO-1-S		0.416	0.002	0.909		0.938	0.568	0.824	0.426	0.859	0.590	0.735	0.880	0.511
Hx Endo	0.040	0.532	0.465	0.354	0.938		0.926	0.204	0.130	0.819	0.946	0.345	0.071	0.426
CD45 Endo	0.965	0.115	0.067	0.586	0.568	0.926		0.008	0.982	0.474	0.488	0.860	0.811	0.740
HO-1 Endo	0.636	0.708	0.357	0.646	0.824	0.204	0.008		0.259	0.097	0.856	0.147	0.443	0.908
Hx Endo-S	0.158	0.914	0.152	0.173	0.426	0.130	0.982	0.259		0.627	0.773	0.642		0.823
HO-1 Endo-S	0.177	0.570	0.846	0.612	0.859	0.819	0.474	0.097	0.627		0.009	0.691	0.550	0.107
age	0.908	0.197	0.335	0.939	0.590	0.946	0.488	0.856	0.773	0.009		0.581	1.000	0.144

Chemo	0.78 0	0.559	0.853	0.75 6	0.735	0.345	0.860	0.147	0.642	0.691	0.58 1		0.700	0.36 9
Radiation	0.47 0	0.515	0.879	0.09 6	0.880	0.071	0.811	0.443		0.550	1.00 0	0.700		0.09 8
Stage	0.50 2	0.542	0.634	0.03 7	0.511	0.426	0.740	0.908	0.823	0.107	0.14 4	0.369	0.098	

r2	Hx-T	CD45-T	HO-1-T	Hx-S	HO-1-S	Hx Endo	CD45 Endo	HO-1 Endo	Hx Endo-S	HO-1 Endo-S	Age	Chem o	Radiati on	Stag e
Hx-T		0.016	-0.028	0.67 9		0.625	-0.013	0.145	0.512	-0.494	-0.03 4	0.090	-0.231	-0.19 6
CD45-T	0.01 6		-0.117	0.41 1	-0.259	-0.201	0.440	-0.110	-0.042	-0.205	0.35 3	-0.179	-0.199	-0.17 1
HO-1-T	-0.02 8	-0.117		0.12 6	0.771	-0.247	-0.522	-0.279	0.556	0.076	-0.27 8	-0.060	-0.049	-0.14 0
Hx-S	0.67 9	0.411	0.126		0.042	0.310	0.175	0.148	0.498	-0.213	0.02 3	0.106	-0.527	0.58 2
HO-1-S		-0.259	0.771	0.04 2		-0.031	-0.194	0.076	0.361	-0.075	0.17 3	-0.116	0.052	0.21 1
Hx Endo	0.62 5	-0.201	-0.247	0.31 0	-0.031		0.029	0.377	0.512	-0.097	0.02 0	0.299	-0.538	0.23 1
CD45 Endo	-0.01 3	0.440	-0.522	0.17 5	-0.194	0.029		0.636	-0.009	0.257	0.18 7	0.052	-0.070	-0.09 0

HO-1 Endo	0.14 5	-0.110	- 0.279	0.14 8	0.076	0.377	0.636		0.421	0.553	0.04 9	0.408	-0.223	- 0.03 2
Hx Endo-S	0.51 2	-0.042	0.556	0.49 8	0.361	0.512	-0.009	0.421		-0.254	0.10 5	0.196		0.08 2
HO-1 Endo-S	- 0.49 4	-0.205	0.076	- 0.21 3	- 0.075	-0.097	0.257	0.553	-0.254		- 0.77 2	0.168	-0.250	- 0.54 0
age	- 0.03 4	0.353	- 0.278	- 0.02 3	- 0.173	-0.020	0.187	0.049	0.105	-0.772		- 0.155	0.000	0.37 0
Chemo	0.09 0	-0.179	- 0.060	- 0.10 6	- 0.116	0.299	0.052	0.408	0.196	0.168	- 0.15 5		0.113	0.25 0
Radiation	- 0.23 1	-0.199	- 0.049	- 0.52 7	0.052	-0.538	-0.070	-0.223		-0.250	0.00 0	0.113		0.44 3
Stage	- 0.19 6	-0.171	- 0.140	- 0.58 2	0.211	0.231	-0.090	-0.032	0.082	-0.540	0.37 0	0.250	0.443	

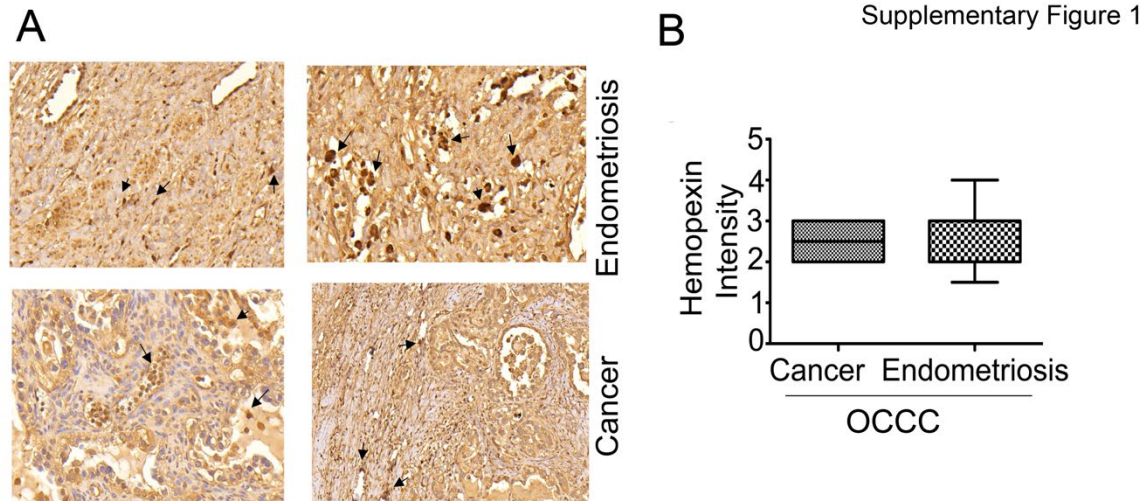


Figure S1: The expression of Hx in the cancer and adjacent endometriosis in OCCC patients as in Figure 2. The representative sections are shown in A. Quantification is shown in B.

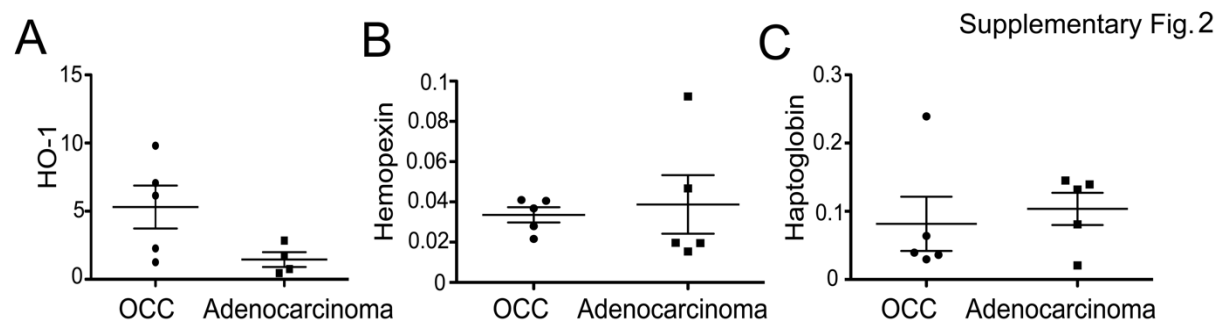


Figure S2: Geo Profile comparison of the relative expression of *Hmox1*, *Hx* and *Hp* in the ovarian clear cell-like cancer (OCC) or adenocarcinoma of ovary cell lines.

Supplementary File S1 (original blots).

Fig 5A

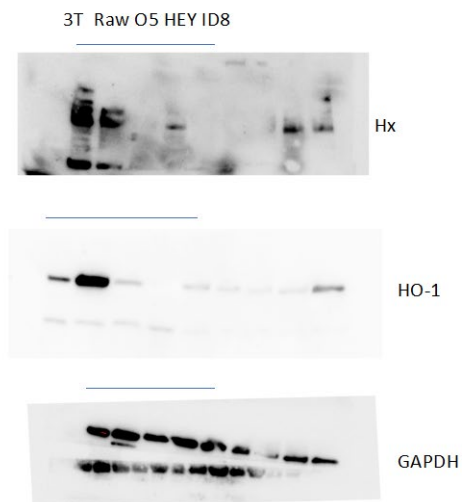


Fig. 5B

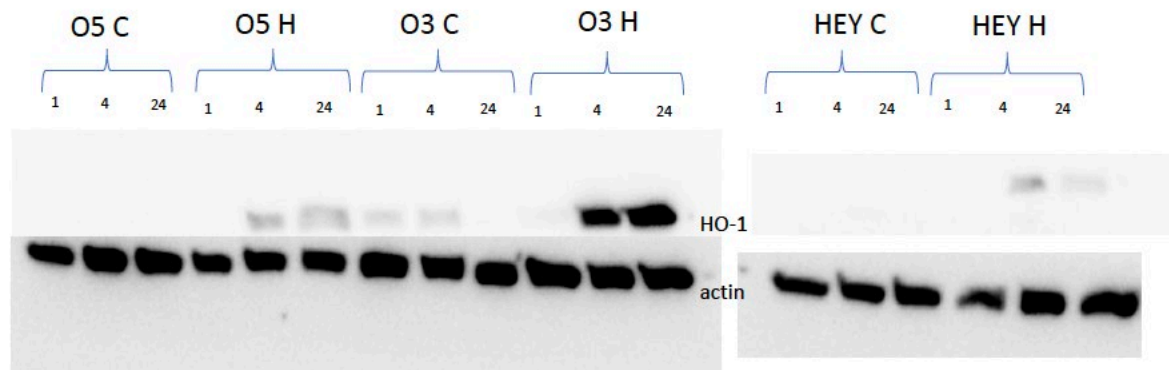


Fig 5C

