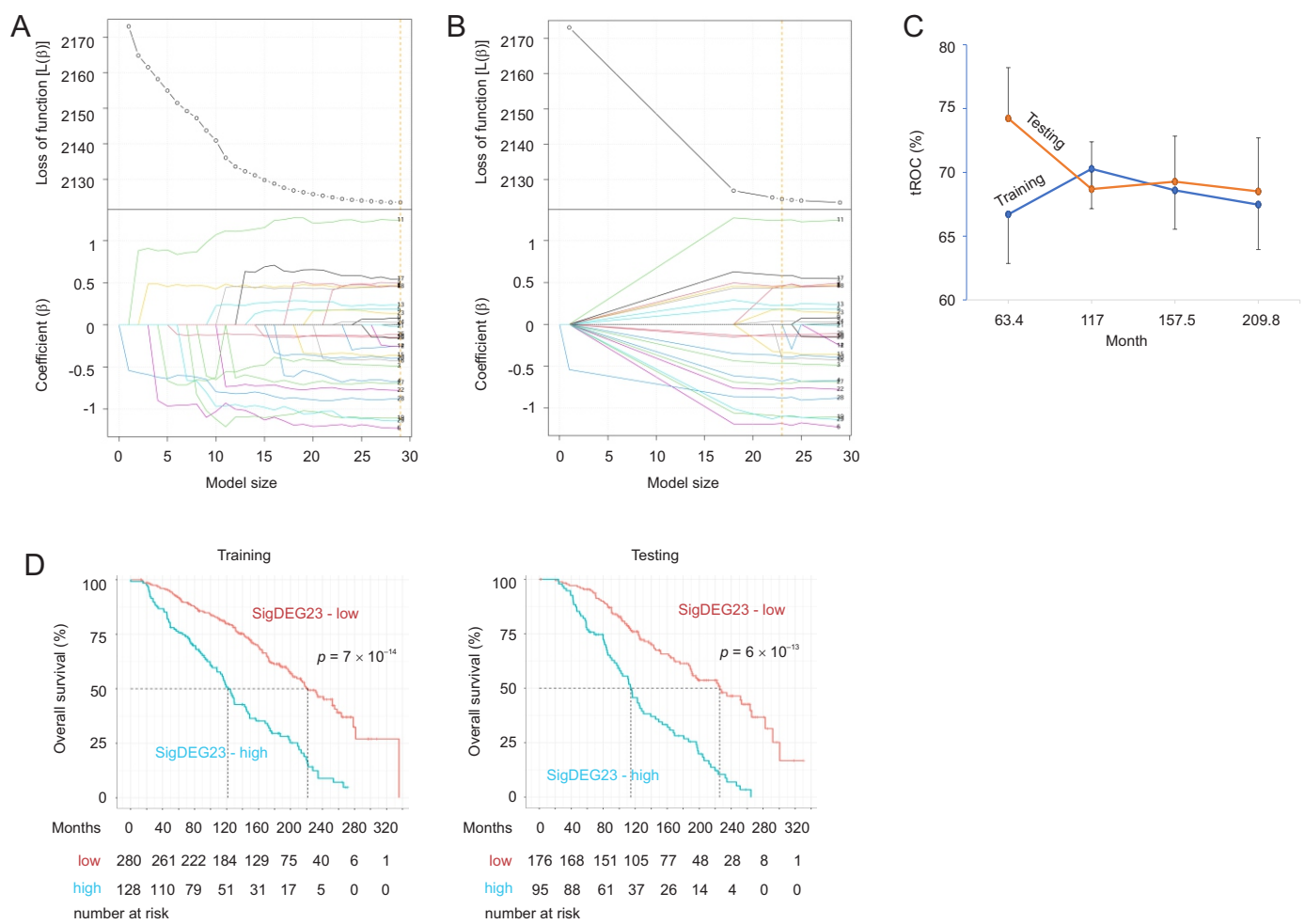


Figure S6



**Figure S6.** Construction and characterization of SigDEG23. (**A**, **B**) Optimization of DEG36 model size by Cox regression (BeSS R package) using sequential (**A**) and golden selection (gselection) (**B**) methods. The dotted line in panel **B** indicates the optimized model size ( $n = 23$ ), which we named it as SigDEG23. (**C**) Time-dependent ROC-AUC curves for SigDEG23 in discrimination of the mortality risk in the Training and Testing sub-populations (see “Results” for details). (**D**) Stratification of BC mortality in Training and Testing populations. Cutoff points were estimated using Maximally Selected Rank Statistics. Statistical analysis was performed using log-rank test.