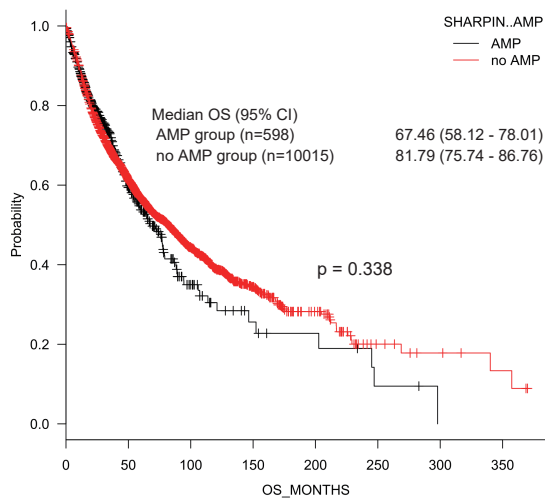


A



B

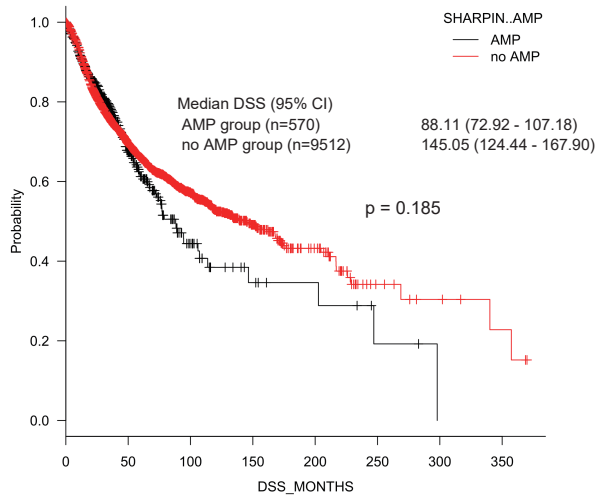


Figure S7. SHARPIN gene amplification is not associated with OS or DSS of cancer patients.

A, B. Kaplan-Meier curves showing the relationship between SHARPIN gene amplification (AMP) and OS (A) or DSS (B), based on a TCGA Pan-Cancer Atlas Studies dataset including all types of cancer (A: $n = 10,613$; B: $n = 10,082$). Subjects were dichotomized into SHARPIN AMP and no AMP groups.

Statistical significance was calculated using a log-rank test. The P-value is indicated in each figure.