

Supplementary Material

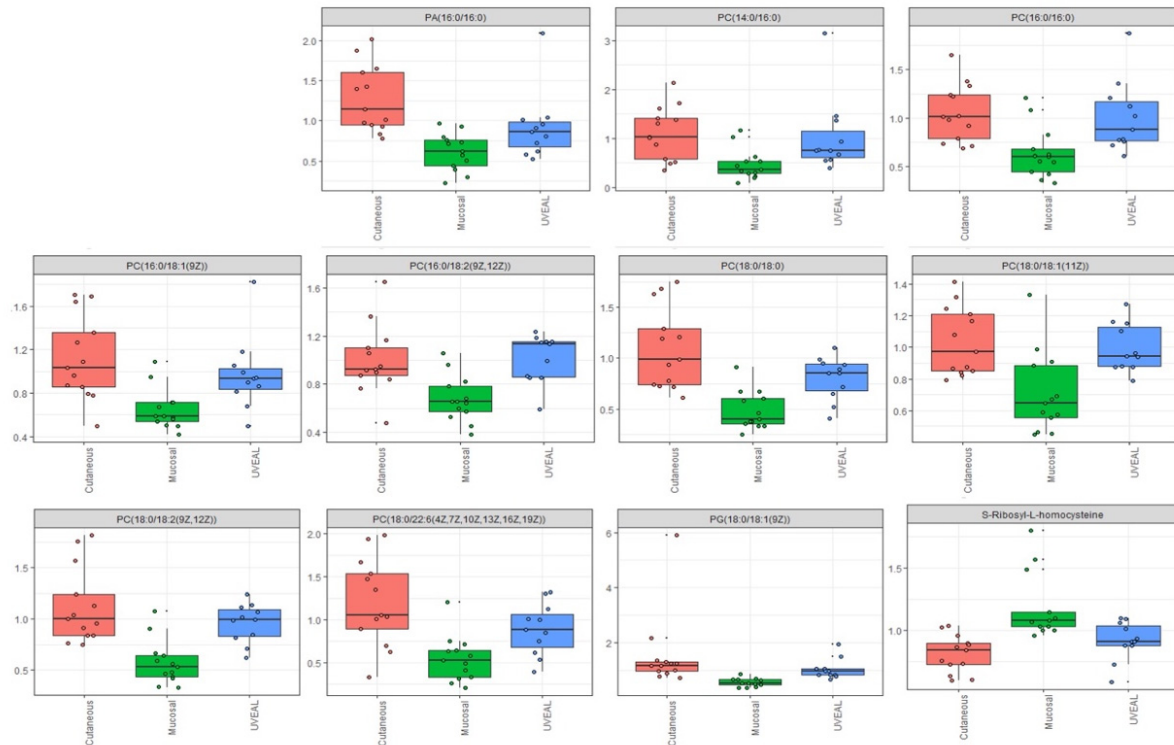


Figure S1: Characterization of phosphatidic acid (PA), phosphatidylcholine (PC), glycerophospholipid (PG), and s-ribosyl-L-homocysteine according to the melanoma subtypes.

Median Overall Survival (m)	
SPM < 3.54	SPM ≥ 3.55
12.8	6.1
HR: 0.478 95% CI 0.13 to 1.72 p = 0.248	

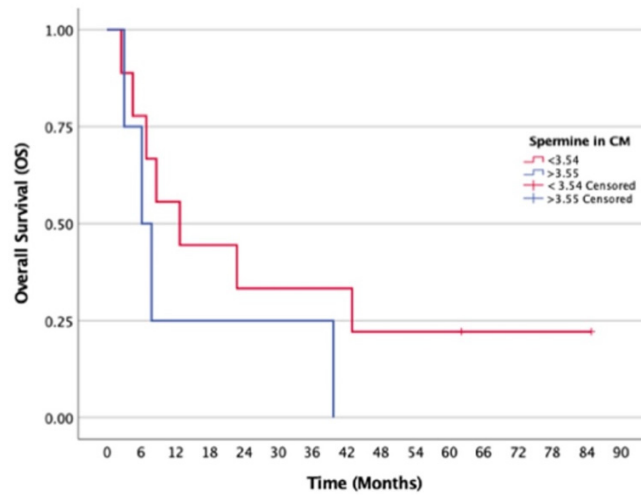


Figure S2: Overall survival of cutaneous melanoma patients according to SPM levels. SPM cut-off point used for analysis was in the 70th percentile.