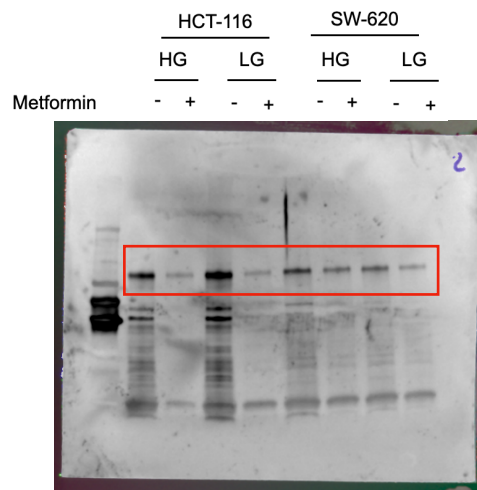
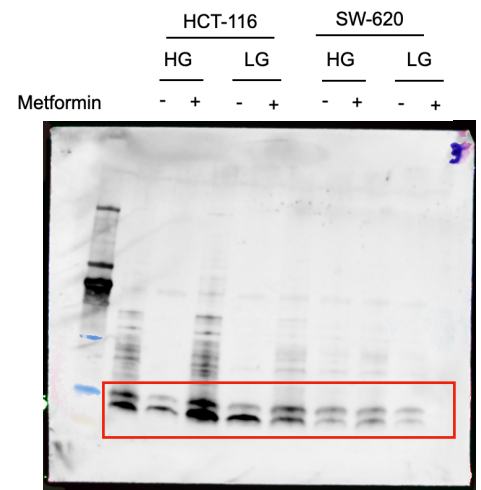


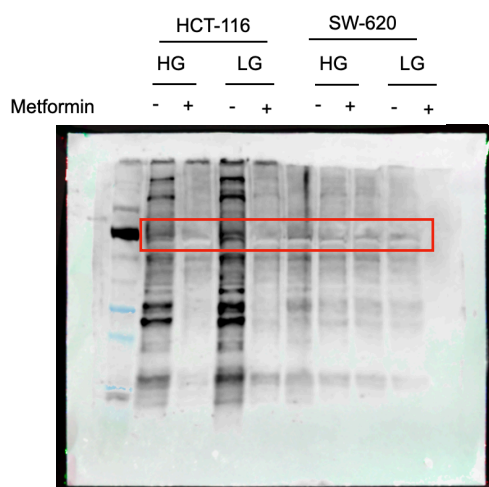
Western Blot : E-cadherin *in vitro*
Figure 3(b)



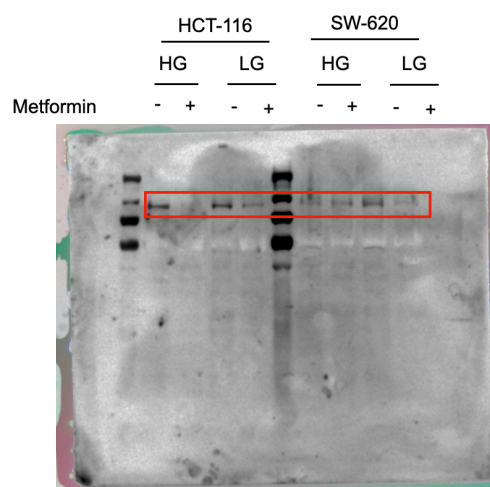
Western Blot : Sortilin *in vitro*
Figure 3(b)



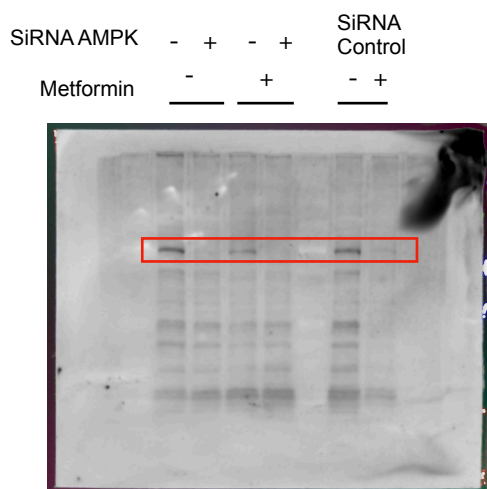
Western Blot : LC3-B *in vitro*
Figure 3(b)



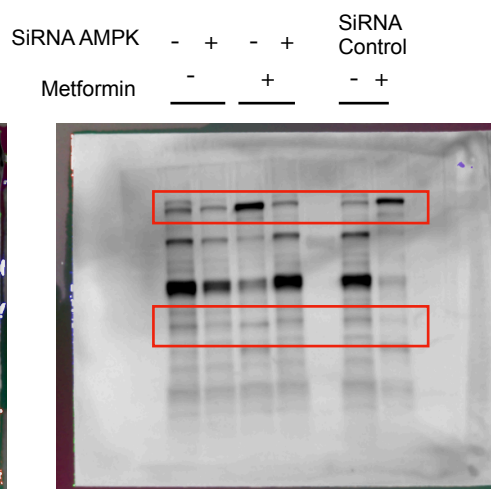
Western Blot : MMP2 *in vitro*
Figure 3(b)



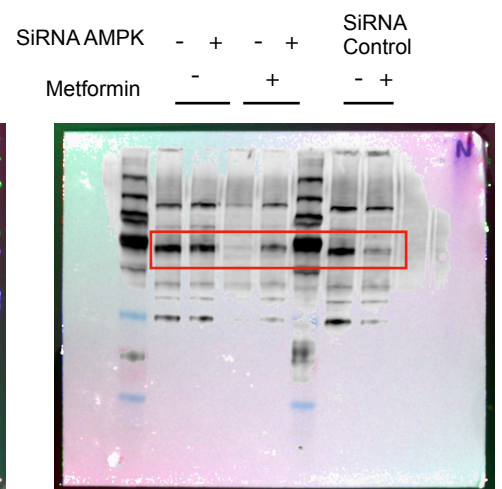
Western Blot : MMP9 *in vitro*
Figure 3(b)



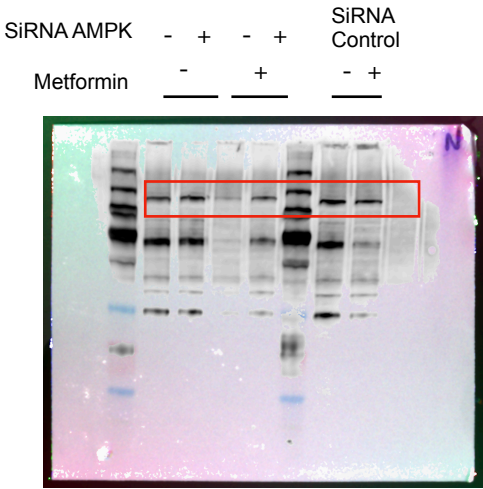
Western Blot : AMPK HCT-116 High
Glucose *in vitro*
Figure 4(b)



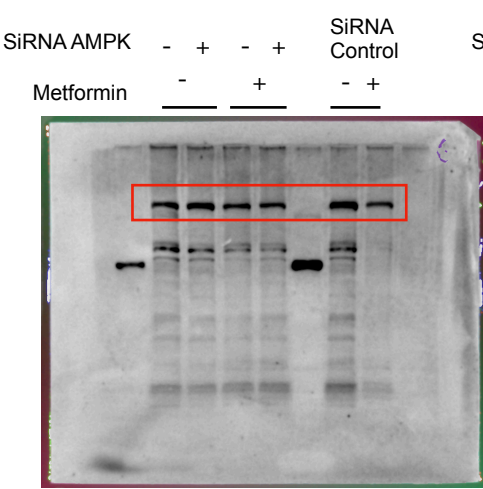
Western Blot : E-cadherin HCT-116
High Glucose *in vitro*
Figure 4(b)



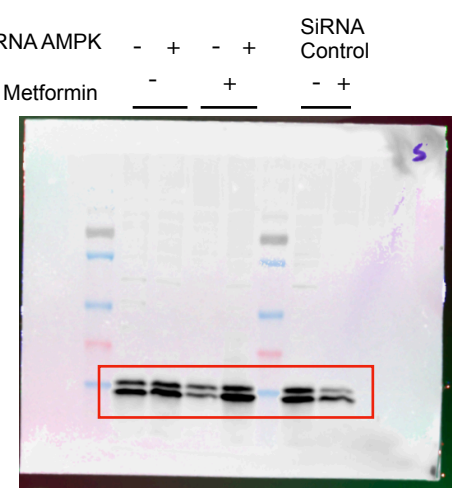
Western Blot : MMP2 HCT-116 High
Glucose *in vitro*
Figure 4(b)



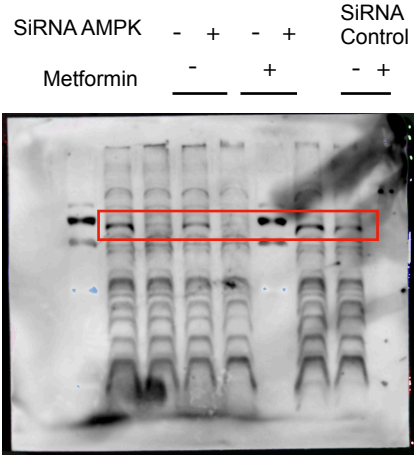
Western Blot : MMP9 HCT-116 High
Glucose *in vitro*
Figure 4(b)



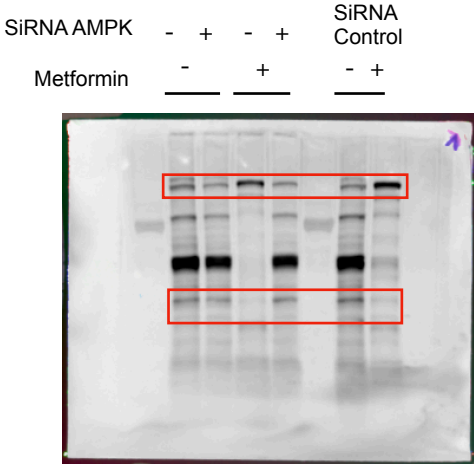
Western Blot : Sortilin HCT-116 High
Glucose *in vitro*
Figure 4(b)



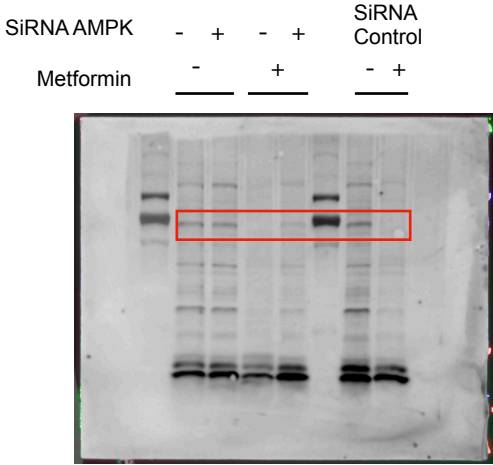
Western Blot : LC3-B HCT-116 High
Glucose *in vitro*
Figure 4(b)



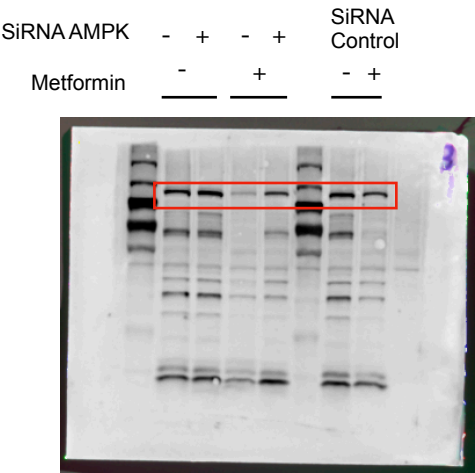
Western Blot : AMPK HCT-116 Low
Glucose *in vitro*
Figure 4(a)



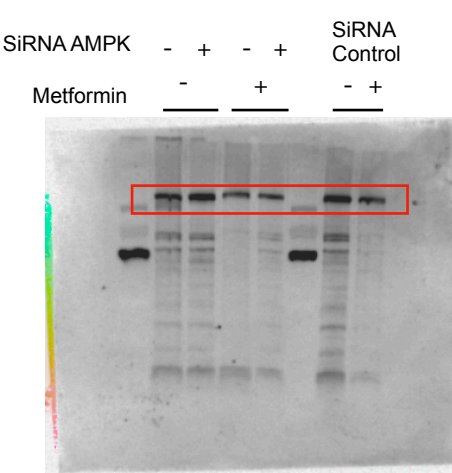
Western Blot : E-cadherin HCT-116
Low Glucose *in vitro*
Figure 4(a)



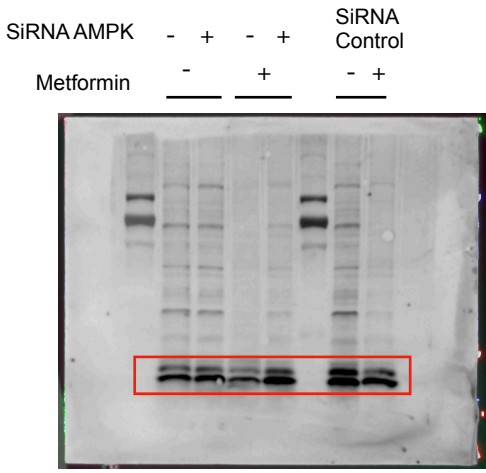
Western Blot : MMP2 HCT-116 Low
Glucose *in vitro*
Figure 4(a)



Western Blot : MMP9 HCT-116 Low
Glucose *in vitro*
Figure 4(a)

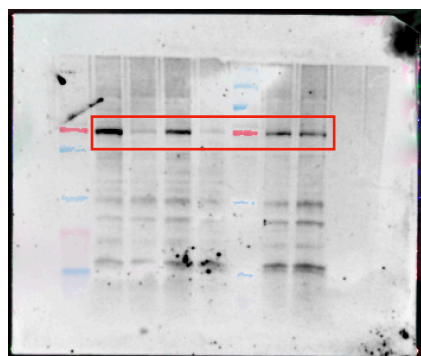


Western Blot : Sortilin HCT-116 Low
Glucose *in vitro*
Figure 4(a)



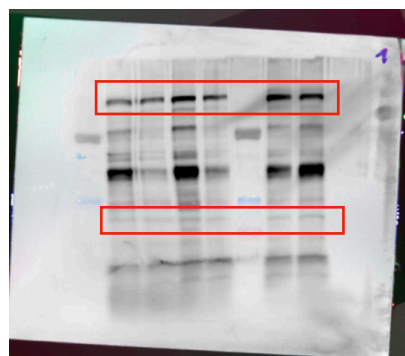
Western Blot : LC3-B HCT-116 Low
Glucose *in vitro*
Figure 4(a)

SiRNA AMPK	-	+	-	+	SiRNA Control
Metformin	-	+	-	+	-



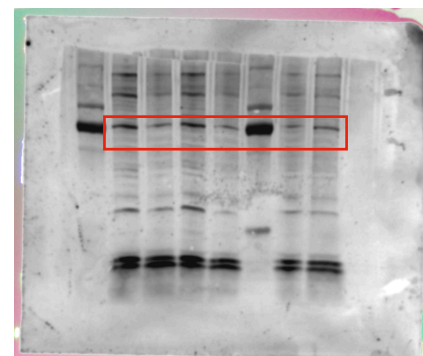
Western Blot : AMPK SW-620 High
Glucose *in vitro*
Figure 4(f)

SiRNA AMPK	-	+	-	+	SiRNA Control
Metformin	-	+	-	+	-



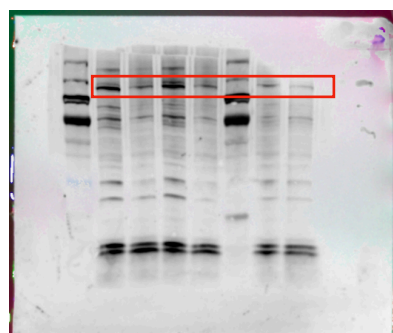
Western Blot : E-cadherin SW-620
High Glucose *in vitro*
Figure 4(f)

SiRNA AMPK	-	+	-	+	SiRNA Control
Metformin	-	+	-	+	-



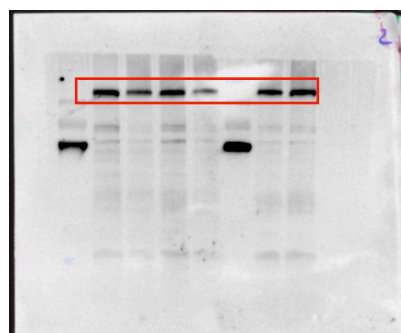
Western Blot : MMP2 SW-620 High
Glucose *in vitro*
Figure 4(f)

SiRNA AMPK	-	+	-	+	SiRNA Control
Metformin	-	+	-	+	-



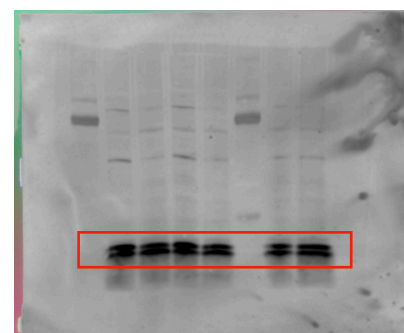
Western Blot : MMP9 SW-620 High
Glucose *in vitro*
Figure 4(f)

SiRNA AMPK	-	+	-	+	SiRNA Control
Metformin	-	+	-	+	-



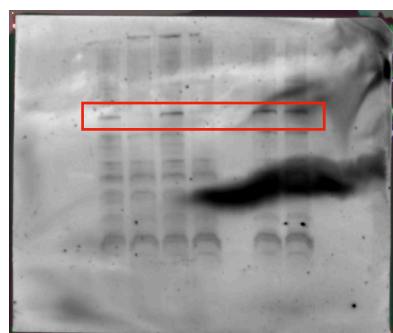
Western Blot : Sortilin SW-620 High
Glucose *in vitro*
Figure 4(f)

SiRNA AMPK	-	+	-	+	SiRNA Control
Metformin	-	+	-	+	-



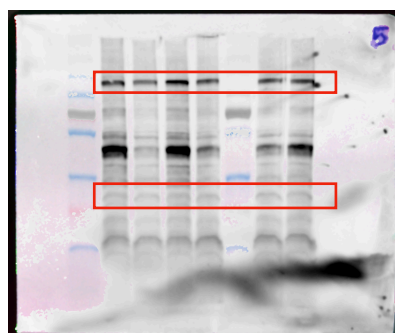
Western Blot : LC3-B SW-620 High
Glucose *in vitro*
Figure 4(f)

SiRNA AMPK	-	+	-	+	SiRNA Control
Metformin	-	+	-	+	-



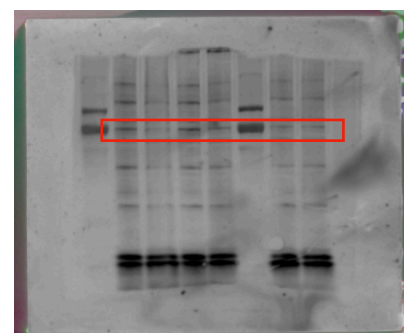
Western Blot : AMPK SW-620 Low
Glucose *in vitro*
Figure 4(e)

SiRNA AMPK	-	+	-	+	SiRNA Control
Metformin	-	+	-	+	-

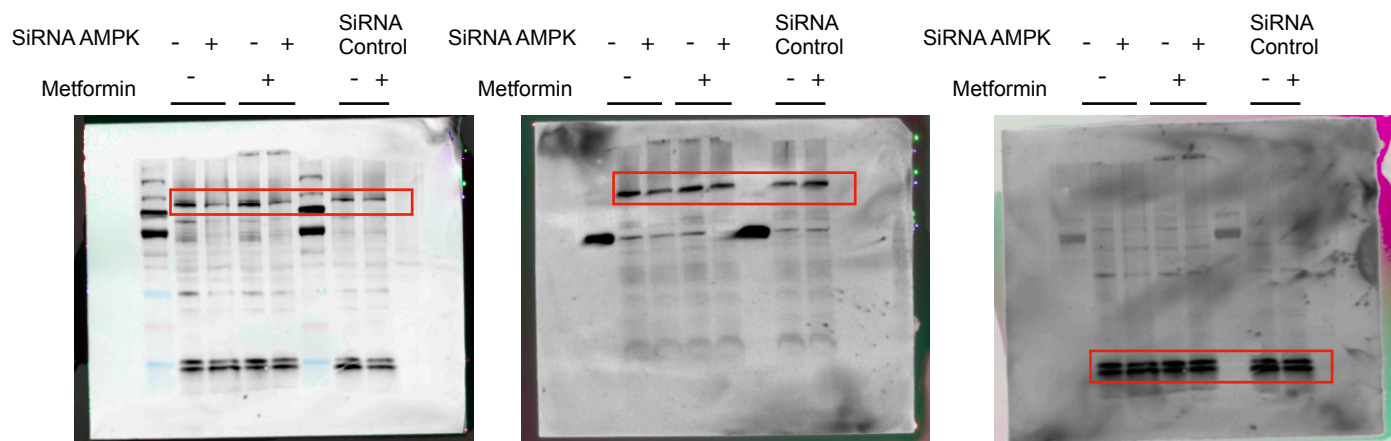


Western Blot : E-cadherin SW-620 Low
Glucose *in vitro*
Figure 4(e)

SiRNA AMPK	-	+	-	+	SiRNA Control
Metformin	-	+	-	+	-



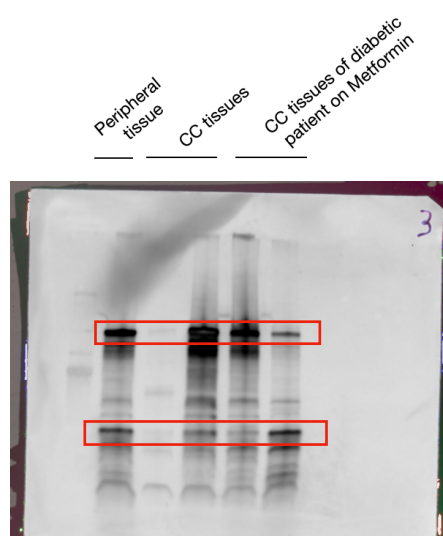
Western Blot : MMP2 SW-620 Low
Glucose *in vitro*
Figure 4(e)



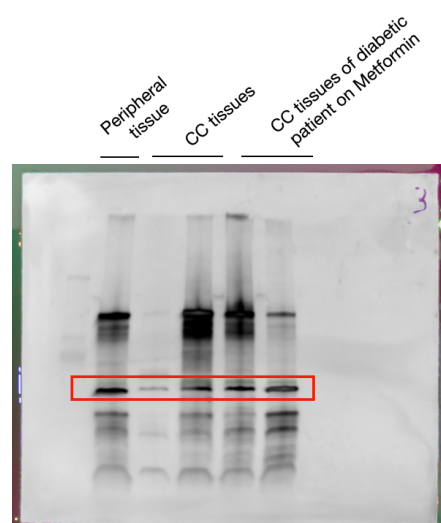
Western Blot : MMP9 SW-620 Low
Glucose *in vitro*
Figure 4(e)

Western Blot : Sortilin SW-620 Low
Glucose *in vitro*
Figure 4(e)

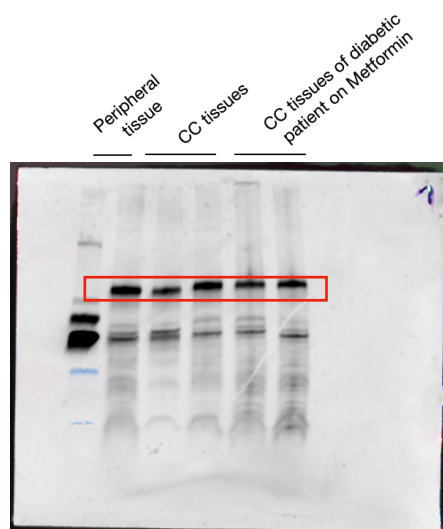
Western Blot : LC3-B SW-620 Low
Glucose *in vitro*
Figure 4(e)



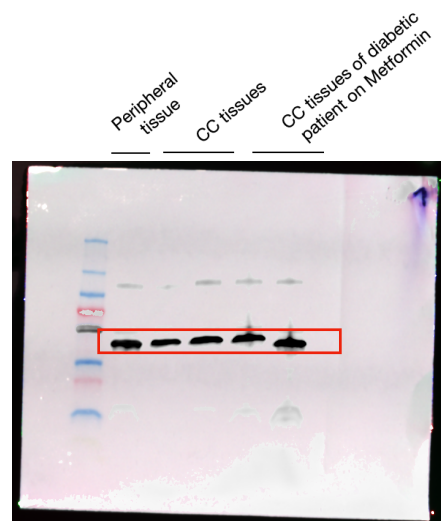
Western Blot : E-cadherin *ex vivo*,
stade I patients' (Figure 8(a))



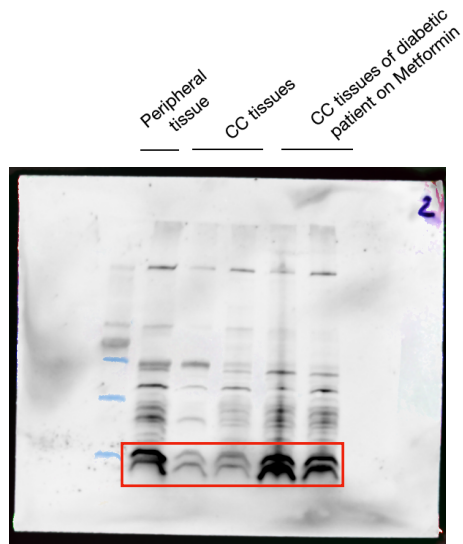
Western Blot : Actin of E-cadherin Western
Blot *ex vivo*, stade I patients' (Figure 8(a))



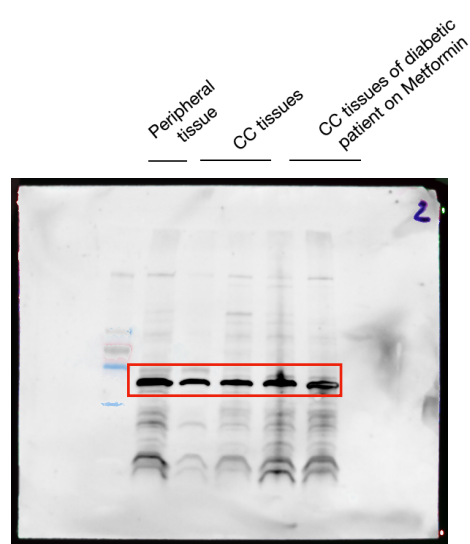
Western Blot : Sortilin *ex vivo*, stade I
patients' (Figure 8(a))



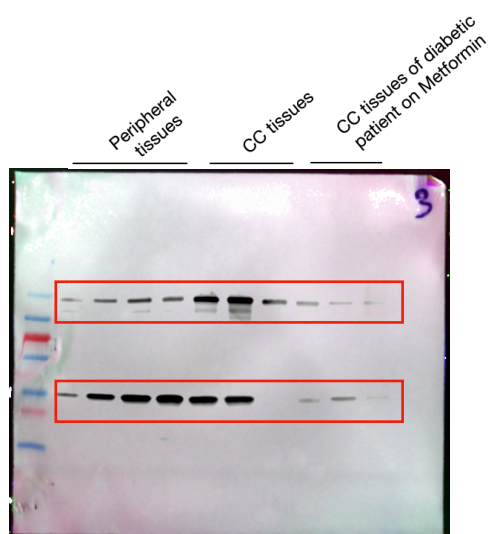
Western Blot : Actin of Sortilin Western Blot
ex vivo, stade I patients' (Figure 8(a))



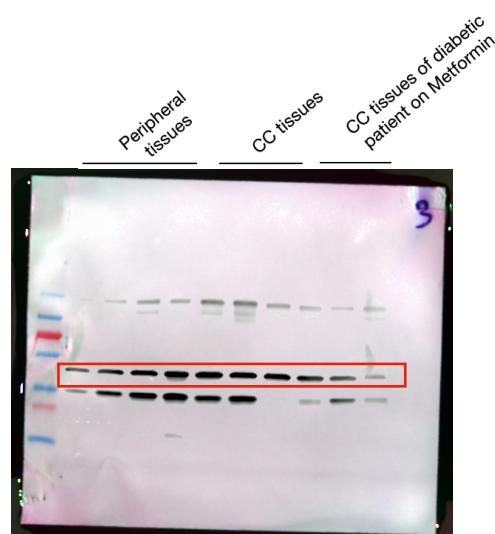
Western Blot : LC3-B *ex vivo*, **stage I patients'** (Figure 8(a))



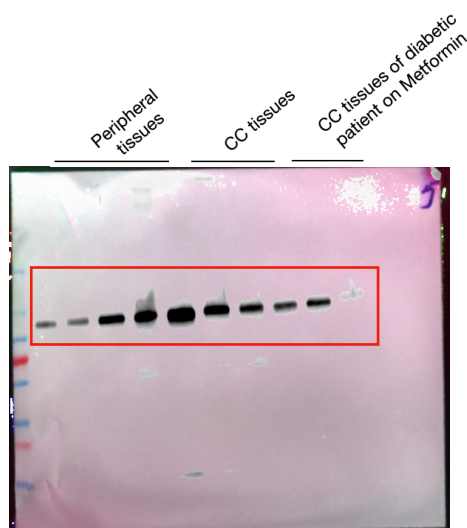
Western Blot : Actin of LC3-B Western Blot *ex vivo*, **stage I patients'** (Figure 8(a))



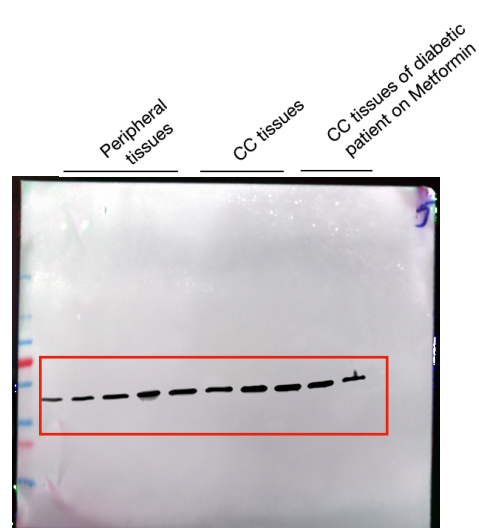
Western Blot : E-cadherin *ex vivo*, **stage II patients'** (Figure 8(b))



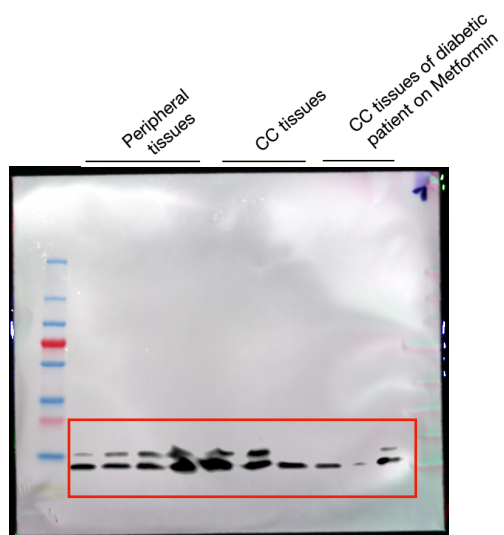
Western Blot : Actin of E-cadherin Western Blot *ex vivo*, **stage II patients'** (Figure 8(b))



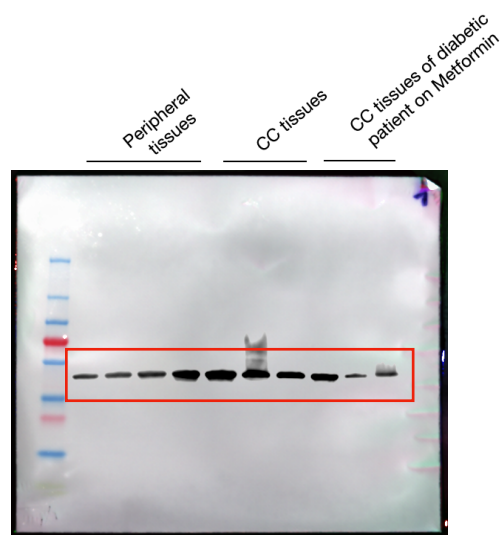
Western Blot : Sortilin *ex vivo*, **stage II patients'** (Figure 8(b))



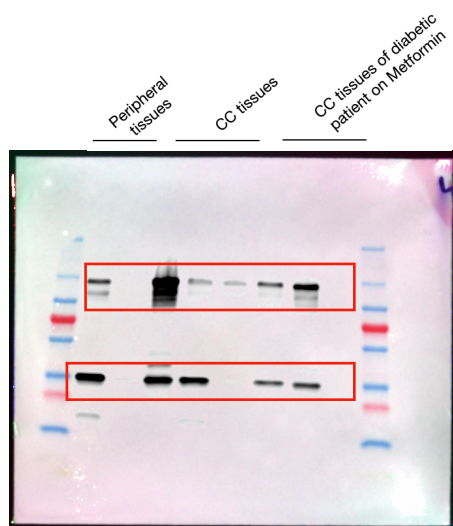
Western Blot : Actin of Sortilin Western Blot *ex vivo*, **stage II patients'** (Figure 8(b))



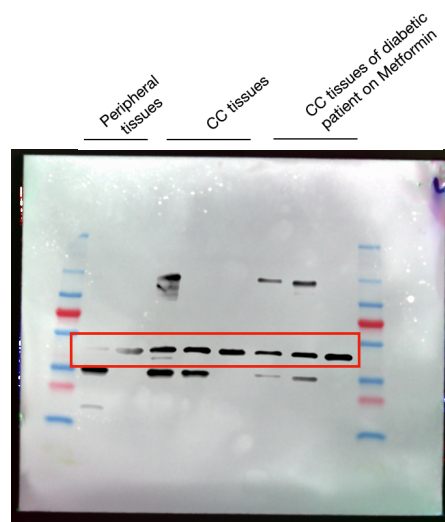
Western Blot : LC3-B *ex vivo*, **stage II patients'** (Figure 8(b))



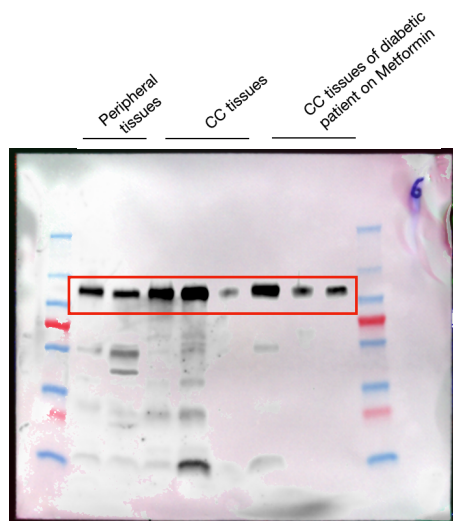
Western Blot : Actin of LC3-B Western Blot *ex vivo*, **stage II patients'** (Figure 8(b))



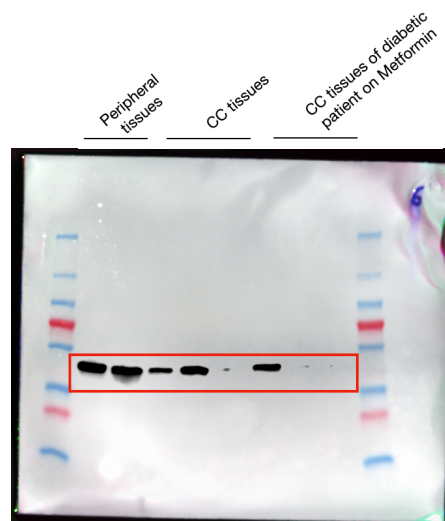
Western Blot : E-cadherin *ex vivo*, **stage III patients'** (Figure 8(c))



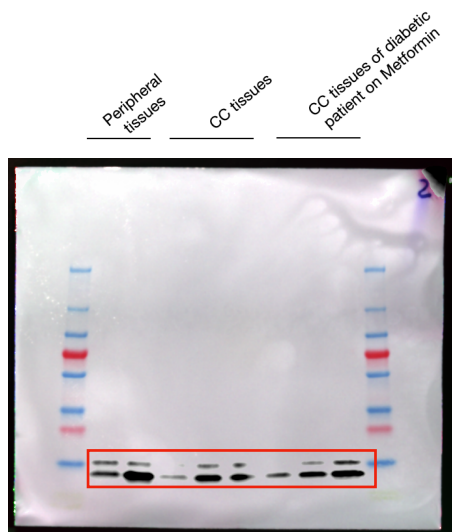
Western Blot : Actin of E-cadherin Western Blot *ex vivo*, **stage III patients'** (Figure 8(c))



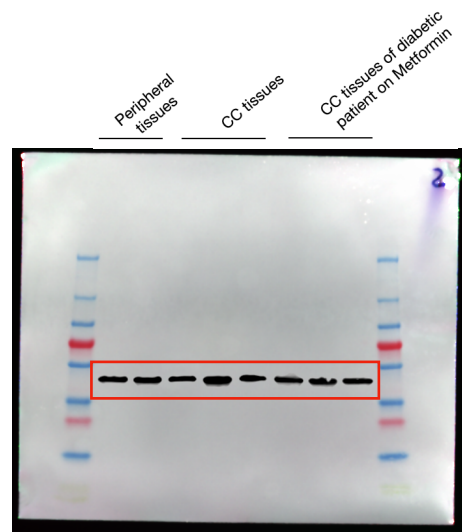
Western Blot : Sortilin *ex vivo*, **stage III patients'** (Figure 8(c))



Western Blot : Actin of Sortilin Western Blot *ex vivo*, **stage III patients'** (Figure 8(c))



Western Blot : LC3-B *ex vivo*, **stade III patients'** (Figure 8(c))



Western Blot : Actin of LC3-B Western Blot *ex vivo*, **stade III patients'** (Figure 8(c))