

Figure S1. Kaplan-Meier estimates of LRFS for reirradiation according to the efficacy of the first course of RT

Survival rates were determined using the Kaplan-Meier method. Survival curves of patients who locally relapsed less than 36 months after their first course of RT (n=12) and those who locally relapsed beyond 36 months (n=16) were compared using the Grehan-Breslow-Wilcoxon test.

RT: radiotherapy, LRFS: local relapse-free survival.

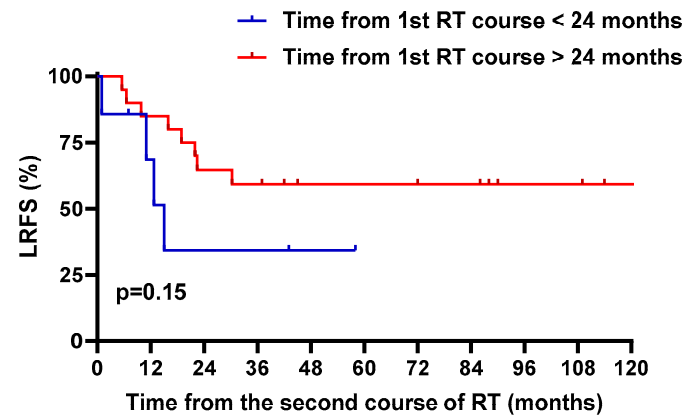


Figure S2. Kaplan-Meier estimates of LRFS for reirradiation according to the time between RT courses

Survival rates were determined using the Kaplan-Meier method. Patients were divided between those who underwent re-RT < or > 24 months after first RT course (n=7 and 21, respectively).

Survival curves were compared using the Grehan-Breslow-Wilcoxon test.

RT: radiotherapy, LRFS: local relapse-free survival.