

## Supplementary Materials

# Indirect Treatment Comparison of First-Line CDK4/6-Inhibitors in Post-Menopausal Patients with HR+/HER2–Metastatic Breast Cancer

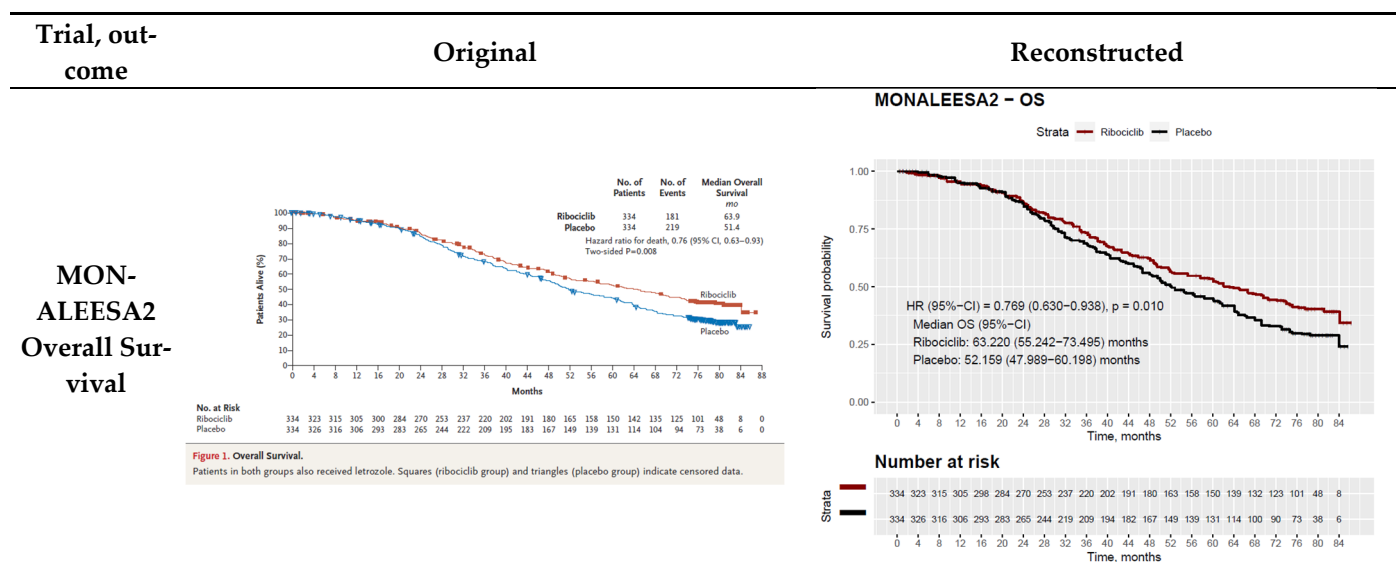
Joseph J. Zhao, Khi Yung Fong, Yiong Huak Chan, Jeremy Tey, Shaheenah Dawood, Soo Chin Lee, Richard S. Finn, Raghav Sundar and Joline S. J. Lim

Table S1. Full search phrases for respective databases.

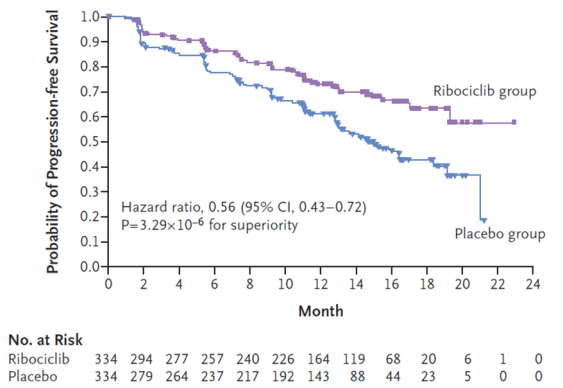
PubMed	821 articles
(breast OR ductal) AND (cancer OR carcinoma) AND (metasta* OR disseminat* OR unresectable OR widespread OR advanced) AND (CDK OR 'cyclin-dependent kinase' OR aromatase OR ribociclib OR abemaciclib OR palbociclib) AND random*	
Embase	153 articles
('breast'/exp OR breast OR ductal) AND ('cancer'/exp OR cancer OR 'carcinoma'/exp OR carcinoma) AND (metastatic OR 'metastases'/exp OR 'metastasis'/exp OR disseminated OR unresectable OR widespread OR advanced) AND (cdk OR 'cyclin-dependent kinase'/exp) AND (random OR randomized OR randomised) NOT ('animal'/exp NOT 'humans'/exp) NOT ('systematic review'/de OR 'meta analysis'/de OR [editorial]/lim OR [erratum]/lim OR [note]/lim OR [review]/lim OR [short survey]/lim)	

Date searched: 15<sup>th</sup> September 2022.

Table S2. Comparisons of reconstructed curves and original curves.

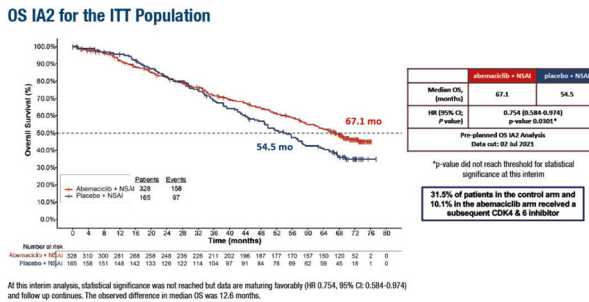


MON-  
ALEESA2  
Progression-  
Free Survival

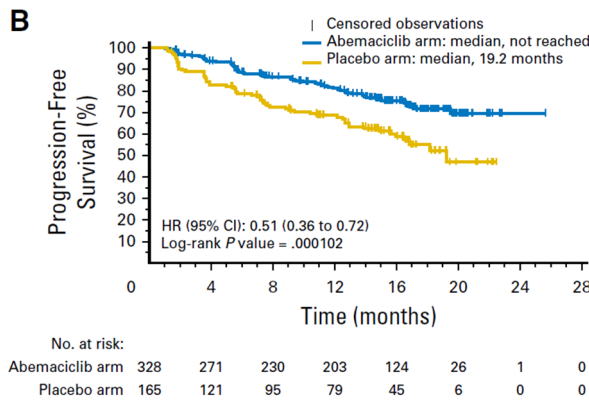


**Figure 1. Kaplan–Meier Analysis of Progression-free Survival.**  
After 18 months, the progression-free survival rate was 63.0% (95% CI, 54.6 to 70.3) in the ribociclib group and 42.2% (95% CI, 34.8 to 49.5) in the placebo group. The median duration of progression-free survival was not reached in the ribociclib group and was 14.7 months in the placebo group.

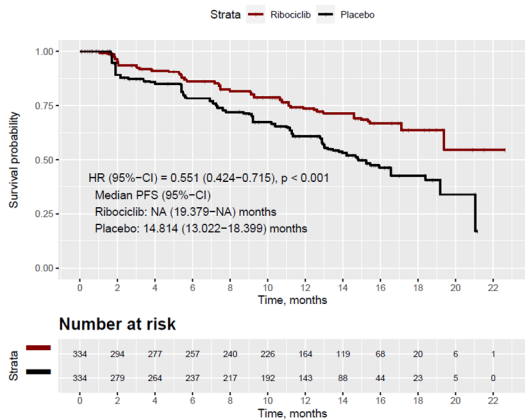
MONARCH  
3  
Overall Sur-  
vival



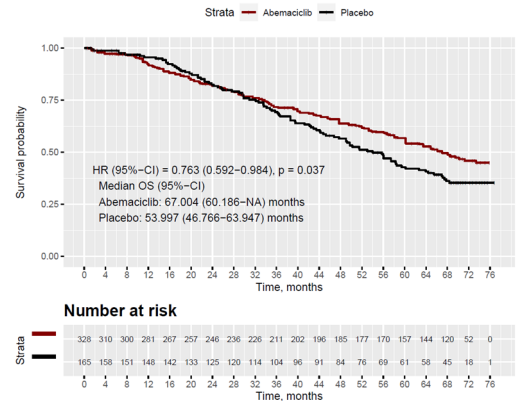
MONARCH  
3  
Progression  
Free Survival



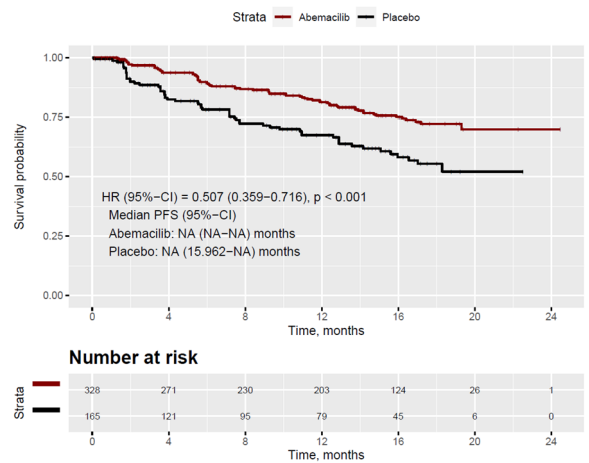
MONALEESA2 – PFS



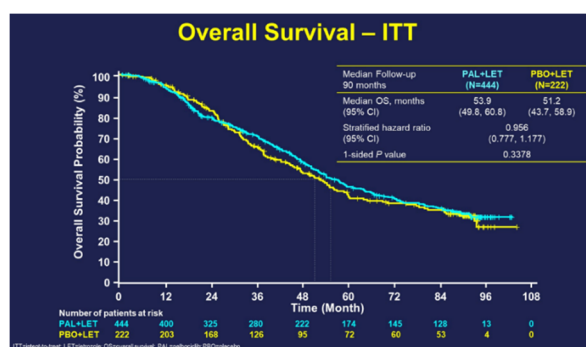
MONARCH3 – OS



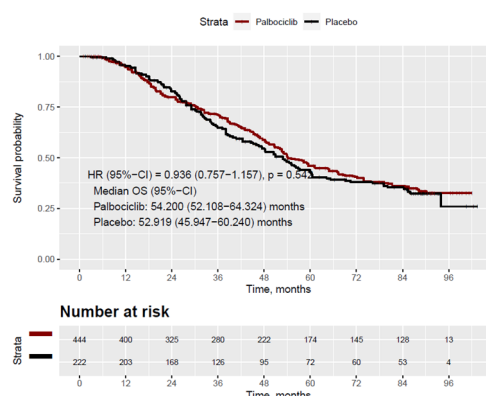
MONARCH3 – PFS



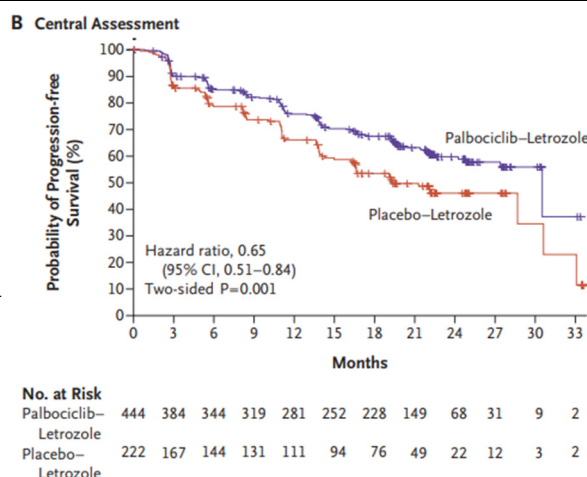
## PALOMA 2 Overall Sur- vival



## PALOMA2 – OS



## PALOMA 2 Progression Free survival



## PALOMA2 – PFS

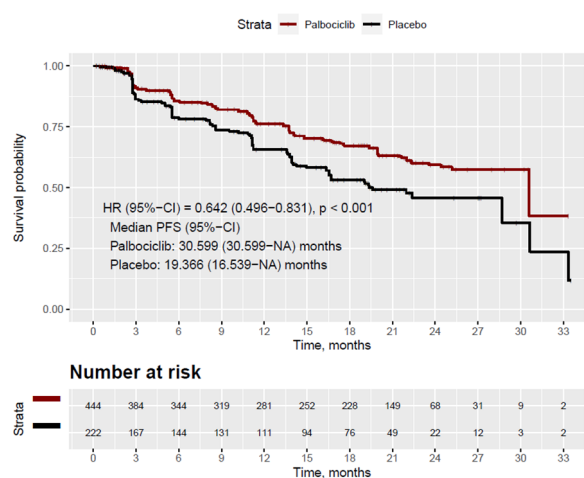


Table S3 Comparisons of reconstructed curves and original curves.

Comparison	Study design	Risk of bias	Inconsistency	Indirectness	Imprecision	Effect (95%CI)	Certainty
Palbociclib vs ribociclib (OS)	RCT	Not serious	Not serious	Not serious	Not serious	0.914 (0.689–1.212)	⊕⊕⊕⊕ High
Palbociclib vs abemaciclib (OS)	RCT	Not serious	Not serious	Not serious	Not serious	1.265 (0.934–1.714)	⊕⊕⊕⊕ High
Abemaciclib vs ribociclib (OS)	RCT	Not serious	Not serious	Not serious	Not serious	0.722 (0.520–1.002)	⊕⊕⊕⊕ High
Palbociclib vs ribociclib (OS)	RCT	Not serious	Not serious	Not serious	Not serious	1.107 (0.914–1.341)	⊕⊕⊕⊕ High
Palbociclib vs abemaciclib (OS)	RCT	Not serious	Not serious	Not serious	Not serious	1.187 (0.971–1.450)	⊕⊕⊕⊕ High
Abemaciclib vs ribociclib (OS)	RCT	Not serious	Not serious	Not serious	Not serious	0.933 (0.753–1.157)	⊕⊕⊕⊕ High

OS, overall survival; RCT, randomized controlled trial; CI, confidence interval.

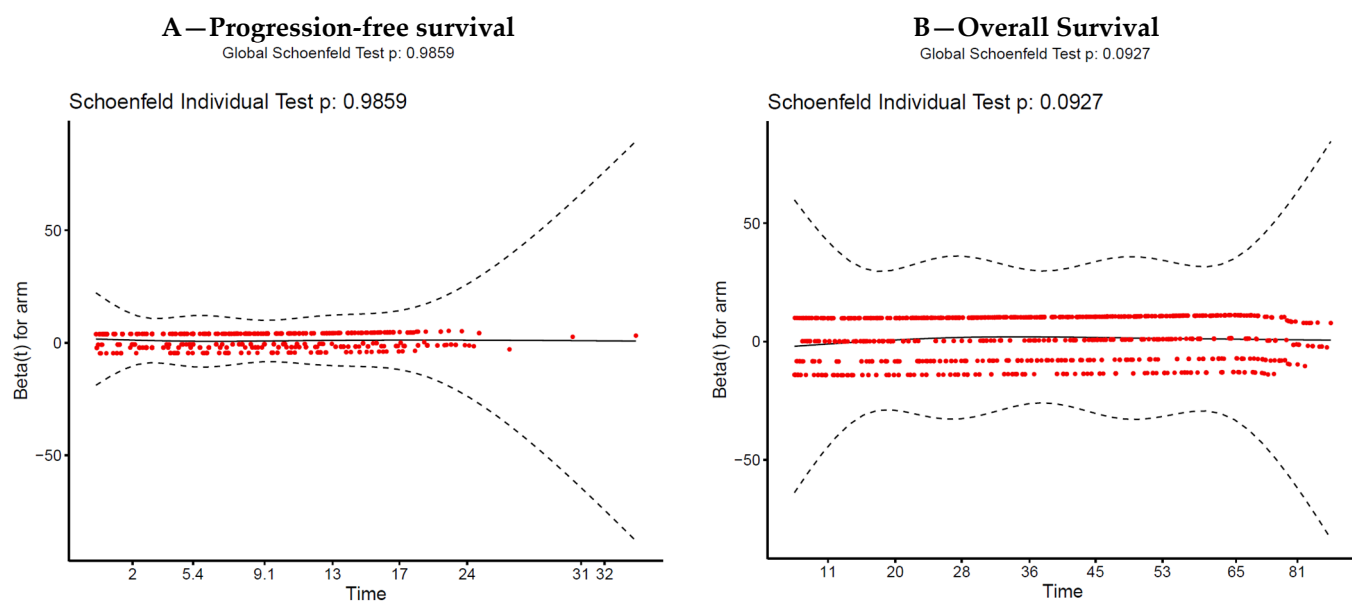


Figure S1. Assessment of proportional hazards assumption.

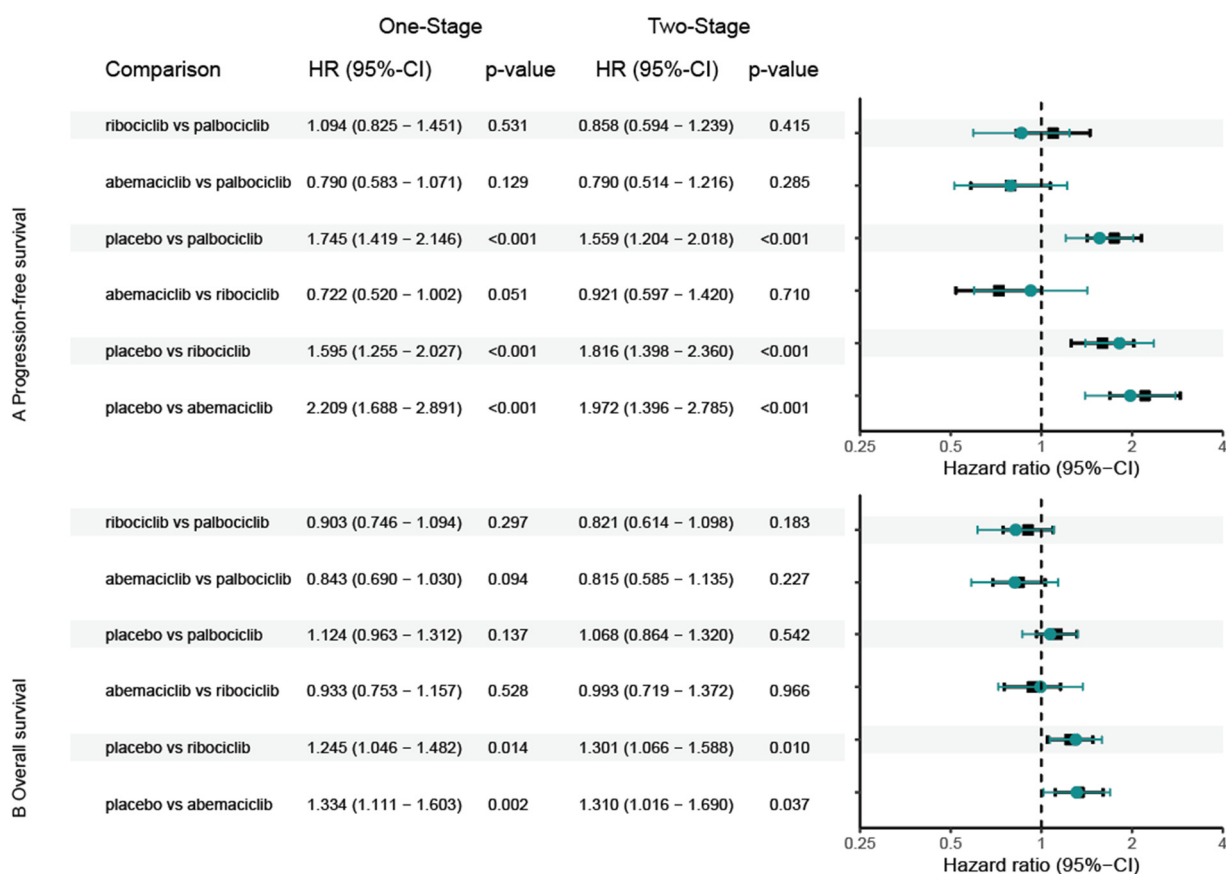


Figure S2. Interval plots – with comparisons against placebo; R, hazard ratio; CI, confidence interval.