

# EPHA3 Could Be a Novel Prognosis Biomarker and Correlates with Immune Infiltrates in Bladder Cancer

Junpeng Liu, Zewen Zhou, Yifan Jiang, Yuzhao Lin, Yunzhi Yang, Chongjiang Tian, Jinwen Liu, Hao Lin and Bin Huang

## 1. The specific sequence of gene EPHA3:

```
GCTAAATTCTGGCCGTTTTTGGCTTTTTTGTAGACGAAGCTTGGGCTG-
CAGGTCGACTCTA-
GAGGATCCCCGCCACCATGGATTGTCAGCTCTCCATCCTCCTTCTCAGCTGCT
CTGTTCTCGACAGCTTCGGGGAAGTATTCCG-
CAGCCTTCCAATGAAGTCAATCTACTGGAT-
TCAAAAACAATTCAAGGGGAGCTGGGCTGGATCTCTTATCCATCACATGGGTGG
GAAGAGATCAGTGGTGTGGATGAACATTACACACCCATCAGGACTTAC-
CAGGTGTG-
CAATGTCATGGACCACAGTCAAAAACAATTGGCTGAGAACAACTGGGTCCCCA
GGAAGTCAAGCTCAGAAGATTTATGTGGAGCTCAAGTTCCTCTACGAGACTG-
CAA-
TAGCATTCCATTGGTTTTAGGAACTTGCAAGGAGACATTCAACCTGTACTACATG
GAGTCTGATGATGATCATGGGGTGAAATTCGAGAGCATCAGTTTACAAA-
GATTGACAC-
CATTCAGCTGATGAAAGTTTCACTCAAATGGATCTTGGGGACCGTATTCTGAAG
CTCAACACTGAGATTAGAGAAGTAGGTCTGTCAACAAGAAGGGATTTATTT-
GG-
CATTTCAAGATGTTGGTGCTTGTGTTGCCTTGGTGTCTGTGAGAGTATACTTCAA
AAGTGCCCATTTACAGTGAAGAATCTGGCTATGTTTCCAGACACGG-
TACCCATGGACTCCCAGTCCCTGGTGGAGGTTAGAGGGTCTTGTGTCAACAATTC
TAAGGAGGAAGATCCTCCAAGGATGTACTGCAGTACAGAAGGCGAATGGCTT-
GTACCCATT-
GGCAAGTGTTCTGCAATGCTGGCTATGAAGAAAGAGGTTTTATGTGCCAAGCTT
GTCGACCAGGTTTCTACAAGGCATTGGATGGTAA-
TATGAAGTGTGCTAAGTGCCCGCCTCACAGTTCTACTCAGGAAGATGGTTCAATG
AACTGCAGGTGTGAGAATAATTACTTCCGGGCAGACAAA-
GACCCTCCATCCATGGCTT-
GTACCCGACCTCCATCTTCACCAAGAAATGTTATCTCTAATATAAACGAGACCTC
AGTTATCCTGGACTGGAGTTGGCCCTGGACACAGGAGGCCGGA-
GATGTTAC-
CTTCAACATCATATGTAAAAAATGTGGGTGGAATATAAAACAGTGTGAGCCATG
CAGCCCAAATGTCCGCTTCCTCCCTCGACAGTTTGGACTCACCAACACCAC-
GGTGACAG-
TGACAGACCTTCTGGCACATACTAACTACACCTTTGAGATTGATGCCGTTAATGG
GGTGTGAGAGCTGAGCTCCCCACCAAGACAGTTTGCTGCGGTGAG-
CATCACAATAATCAGGCTGCTCCATCACCTGTCCTGACGATTAAGAAAGATCG
GACCTCCAGAAATAGCATCTCTTTGTCCTGGCAAGAACCTGAACATCCTAATGG-
GATCATATTGGACTACGAGGTCAAATACTATGAAAAGCAGGAACAAGAAACAA
GTTATACCATTTCTGAGGGCAAGAGGCACAAATGTTACCATCAGTAGCCTCAA-
GCCTGACAC-
TATATACGTATTCCAAATCCGAGCCCCGAACAGCCGCTGGATATGGGACGAACAG
```

CCGCAAGTTTGAGTTTGAAACTAG-  
 TCCAGACTCTTTCTCCATCTCTGGTGAAAGTAGCCAAGTGGTCATGATCGCCATT  
 TCAGCGGCAGTAGCAATTATTCTCCTCACTGTTGTCATCTATGTTTTGATTGG-  
 GAGGTTCTGTGGCTATAAGTCAAAACATGGGGCAGATGAAAAAAGACTTCATTT  
 TGGCAATGGGCATTTAAAACTTCCAGGTCTCAGGACTTATGTTGACCCACATA-  
 CATATGAA-  
 GACCCTACCCAAGCTGTTTCATGAGTTTGCCAAGGAATTGGATGCCACCAACATA  
 TCCATTGATAAAGTTGTTGGAGCAGGTGAATTTGGAGAGGTGTGCAG-  
 TGGTCGCTTAAAACTTCCTTCAAAAAAAGAGATTTCACTGGCCATTAAGACCCT  
 GAAAGTTGGCTACACAGAAAAGCAGAGGAGAGACTTCCTGGGAGAAGCAA-  
 GCATTATGG-  
 GACAGTTTGACCACCCCAATATCATTTCGACTGGAAGGAGTTGTTACCAAAAGTA  
 AGCCAGTTATGATTGTACAGAATACATGGAGAATGGTTCCTTGGATAGTTTCC-  
 TAC-  
 GTAAACACGATGCCCAGTTTACTGTCATTCAGCTAGTGGGGATGCTTCGAGGGA  
 TAGCATCTGGCATGAAGTACCTGTCAGACATGGGCTATGTTACCCGAGAC-  
 CTCGCTGCTCG-  
 GAACATCTTGATCAACAGTAACTTGGTGTGTAAGGTTTCTGATTTTCGGAATTTTCG  
 CGTGTCTGGAGGATGACCCAGAAGCTGCTTATACAACAAGAGGAGGGAA-  
 GATCCCAATCAGGTGGACATCACCAGAAGCTATAGCCTACCGCAAGTTCACGTC  
 AGCCAGCGATGTATGGAGTTATGGGATTGTTCTCTGG-  
 GAGGTGATGTCTTATGGAGAGAGAC-  
 CATACTGGGAGATGTCCAATCAGGATGTAATTAAAGCTGTAGATGAGGGCTATC  
 GACTGCCACCCCCCATGGACTGCCAGCTGCCTTGTATCAGCTGATGCTG-  
 GACTGCTGG-  
 CAGAAAGACAGGAACAACAGACCCAAGTTTGAGCAGATTGTTAGTATTCTGGA  
 CAAGCTTATCCGGAATCCCGGCAGCCTGAAGATCATCACCAGTGCAGCCG-  
 CAAGGCCATCAAACCTTCTTCTGGACCAAAGCAATGTGGATATCACTACCTTCC  
 GCACAACAGGTGACTGGCTTAATGGTGTCTGGACAGCACACTG-  
 CAAGGAAATCTTCAC-  
 GGGTGTGGAGTACAGTTCTTGTGACACAATAGCCAAGATTTCCACAGATGACAT  
 GAAAAAGGTTGGTGTACCGTGGTTGGGCCACAGAAGAAGATCATCAGTAG-  
 CATTA-  
 GCTCTAGAAACGCAATCAAAGAATGGCCCAGTTCCCGTGGTATGGACTACAAG  
 GATGACGATGACAAGGATTACAAAGACGACGATGATAAGGAC-  
 TATAAGGATGATGAC-  
 GACAAATGAGCTAGCACATAACTTACGGTAAATGGCCCGCCTGGCTGACCGCCC  
 AACG

2. *Uncropped original Western Blotting images*

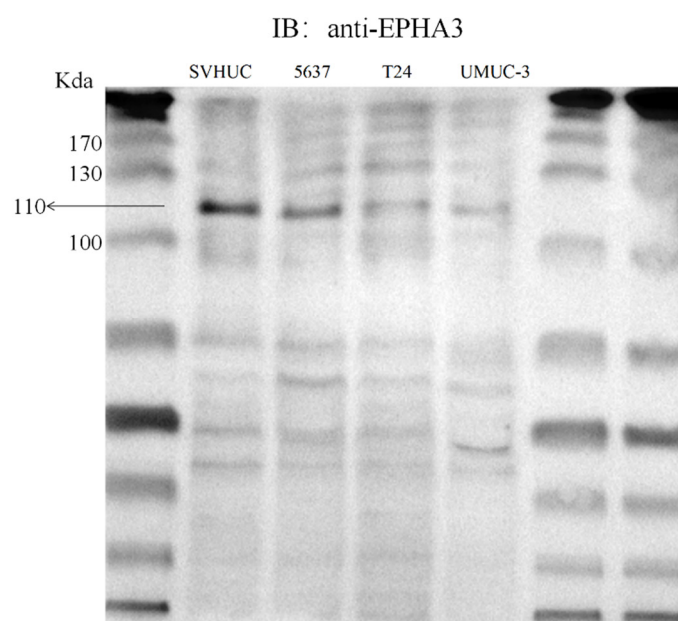


Figure S1. EPHA3.

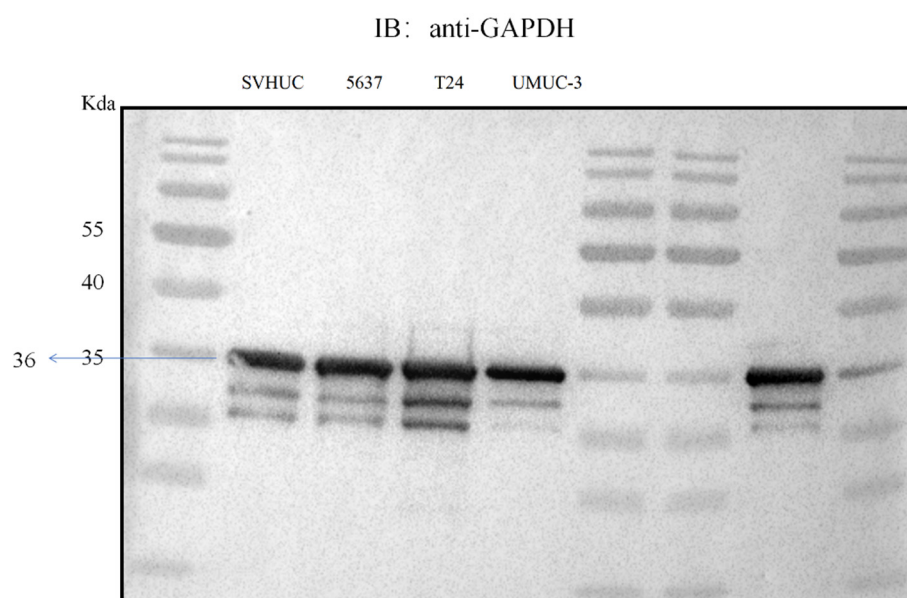
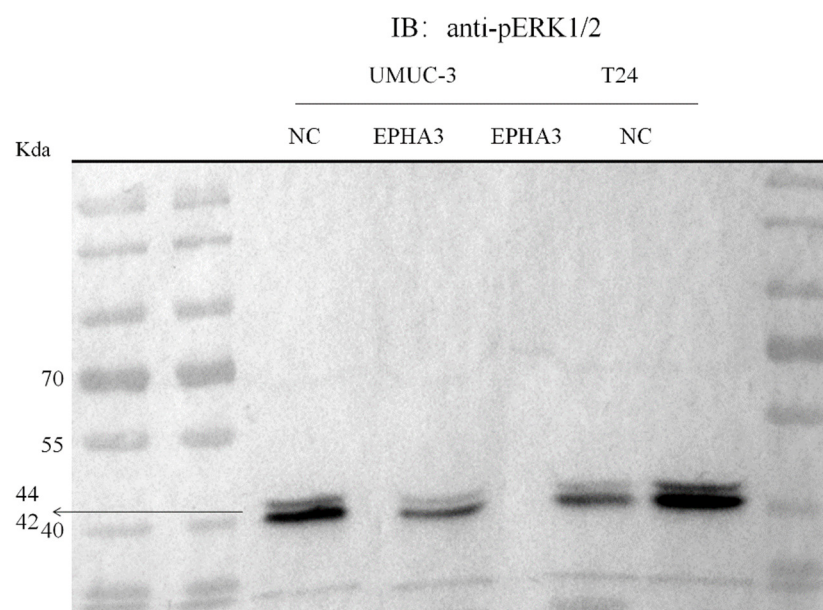
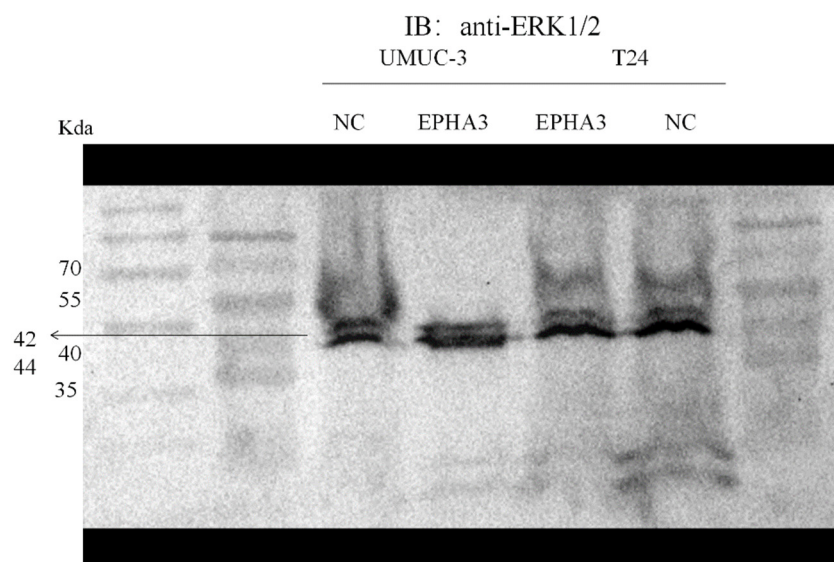


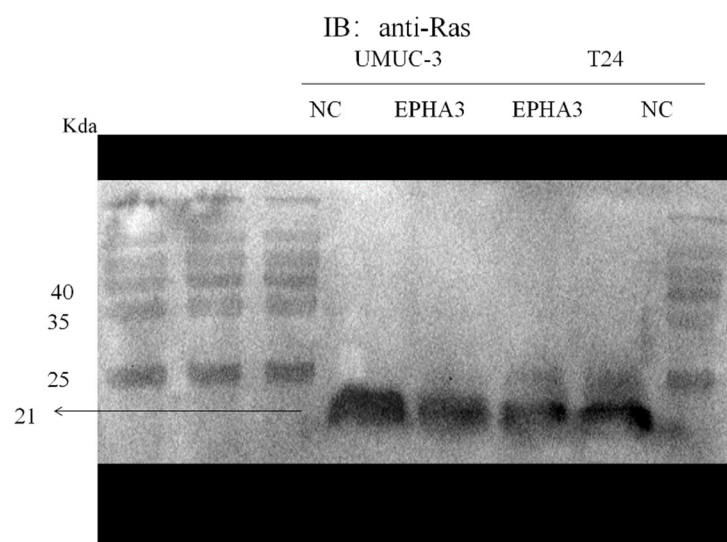
Figure S2. GAPDH.



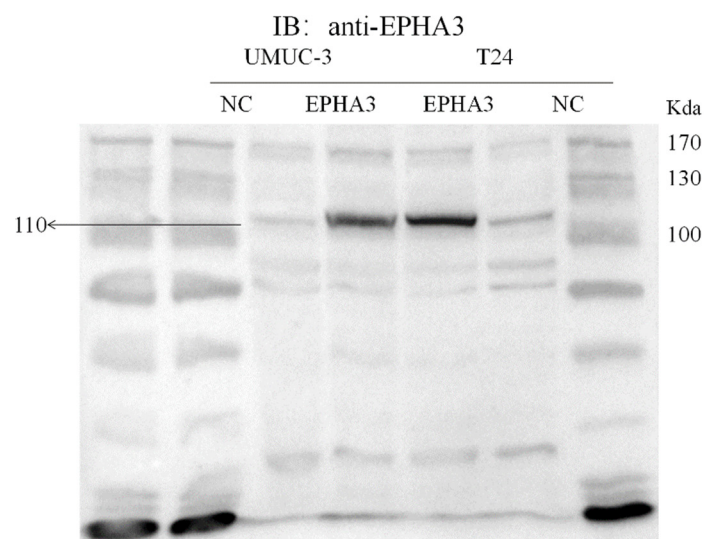
**Figure S3.** pERK1/2.



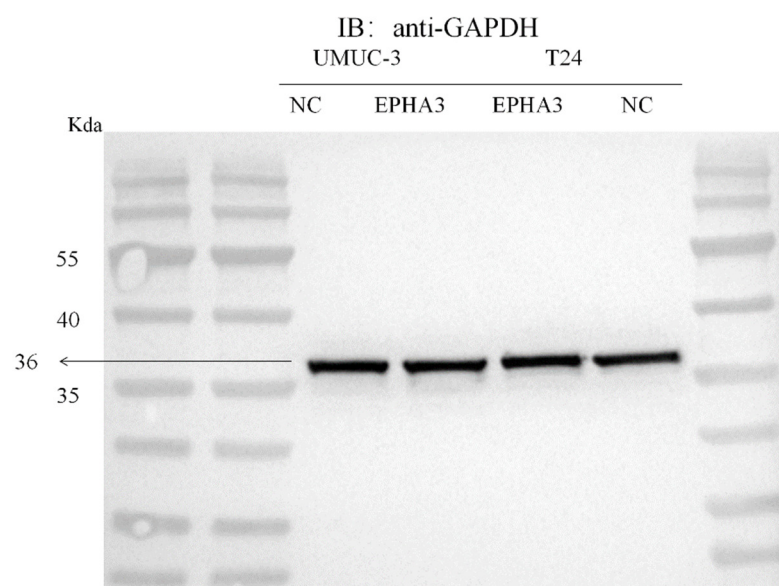
**Figure S4.** ERK1/2.



**Figure S5. Ras.**



**Figure S6. EPHA3.**



**Figure S7.** GAPDH.