

Correction

Correction: von Eyben et al. A Risk Model for Patients with PSA-Only Recurrence (Biochemical Recurrence) Based on PSA and PSMA PET/CT: An Individual Patient Data Meta-Analysis. *Cancers* 2022, 14, 5461

Rie von Eyben ¹, Daniel S. Kapp ², Manuela Andrea Hoffmann ^{3,4} , Cigdem Soydal ⁵ , Christian Uprimny ⁶, Irene Virgolini ⁶ , Murat Tuncel ⁷ , Mathieu Gauthé ⁸  and Finn E. von Eyben ^{9,*}

¹ Cytel Incorporated, 1050 Winter St, Waltham, MA 02452, USA

² Department of Radiation Oncology, Stanford University School of Medicine, Palo Alto, CA 94305, USA

³ Department of Occupational Health & Safety, Federal Ministry of Defense, 53123 Bonn, Germany

⁴ Department of Nuclear Medicine, University Medical Center, Johannes Gutenberg University in Mainz, 55101 Mainz, Germany

⁵ Department of Nuclear Medicine, University of Ankara, Ankara 06100, Turkey

⁶ Department of Nuclear Medicine, University Hospital in Innsbruck, 6020 Innsbruck, Austria

⁷ Department of Nuclear Medicine, Hacettepe University, Ankara 06230, Turkey

⁸ Department of Nuclear Medicine, Incept, Institute Holland, 38100 Grenoble, France

⁹ Center of Tobacco Control Research, 5320 Odense, Denmark

* Correspondence: finn113edler@mail.tele.dk



Citation: von Eyben, R.; Kapp, D.S.; Hoffmann, M.A.; Soydal, C.; Uprimny, C.; Virgolini, I.; Tuncel, M.; Gauthé, M.; von Eyben, F.E.

Correction: Von Eyben et al. A Risk Model for Patients with PSA-Only Recurrence (Biochemical Recurrence) Based on PSA and PSMA PET/CT: An Individual Patient Data Meta-Analysis. *Cancers* 2022, 14, 5461. *Cancers* 2023, 15, 1035. <https://doi.org/10.3390/cancers15041035>

Received: 13 December 2022

Accepted: 14 December 2022

Published: 7 February 2023

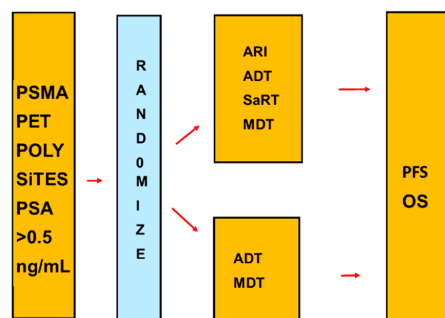


Copyright: © 2023 by the authors. Licensee MDPI, Basel, Switzerland. This article is an open access article distributed under the terms and conditions of the Creative Commons Attribution (CC BY) license (<https://creativecommons.org/licenses/by/4.0/>).

Error in Figure

In the original publication [1], there was a mistake in Figure 6. The lower line that shows the control group treatment is ADT + SDaRT + MDT; however, it should only include ADT + MDT. The corrected Figure 6 appears below. The authors state that the scientific conclusions are unaffected. This correction was approved by the Academic Editor. The original publication has also been updated.

Corrected Figure 6



Reference

1. von Eyben, R.; Kapp, D.S.; Hoffmann, M.A.; Soydal, C.; Uprimny, C.; Virgolini, I.; Tuncel, M.; Gauthé, M.; von Eyben, F.E. A Risk Model for Patients with PSA-Only Recurrence (Biochemical Recurrence) Based on PSA and PSMA PET/CT: An Individual Patient Data Meta-Analysis. *Cancers* 2022, 14, 5461. [[CrossRef](#)] [[PubMed](#)]

Disclaimer/Publisher's Note: The statements, opinions and data contained in all publications are solely those of the individual author(s) and contributor(s) and not of MDPI and/or the editor(s). MDPI and/or the editor(s) disclaim responsibility for any injury to people or property resulting from any ideas, methods, instructions or products referred to in the content.