

**Supplementary Table S1.** Characteristics of the study cohort. African American (AA); European American (EA); Asians American (AAM)

		<b>AAM(N=10)</b>	<b>AA(N=14)</b>	<b>EA(N=16)</b>
<b>Age</b>	<i>Mean (SD)</i>	56.8 (11.4)	59.4 (12.8)	65.6 (11.9)
<b>Gender</b>	<i>Male %</i>	100	78.6	62.5
<b>BMI</b>	<i>Mean (SD)</i>	15.3(12.4)	31.3(10.9)	28.4(15.0)
<b>HCV Serology</b>	<i>HCV Ab+ %</i>	30	57.1	31.2
	<i>HCV RNA+ %</i>	20	21.4	25
<b>HBV Serology</b>	<i>anti HBC+ %</i>	20	7.1	0
	<i>HBs Ag+ %</i>	20	28.6	0
<b>Smoking</b>	<i>Yes %</i>	80	64.3	50
	<i>No %</i>	20	35.7	50
<b>Alcohol</b>	<i>Yes %</i>	50	42.9	43.8
	<i>No %</i>	50	57.1	56.3
<b>MELD</b>	<i>Mean (SD)</i>	8.9 (3.7)	11.2 (4.7)	10.8 (4.7)
	<i>MELD &lt;10 %</i>	50	50	50
<b>AFP</b>	<i>Median (IQR)</i>	3.6 (0.925)	11.2 (147.3)	5.4 (14.025)
<b>AST</b>	<i>Median (IQR)</i>	93 (108)	132 (140)	127.5 (171.8)
<b>ALT</b>	<i>Median (IQR)</i>	93 (81)	141(135)	101(128.5)
<b>Child Pugh score</b>	<i>Mean (SD)</i>	6.1 (1.7)	6.2 (1.7)	6.4 (1.3)
	<i>Median (IQR)</i>	5 (1)	6 (1)	6 (1.25)
<b>Child Pugh Class</b>	<i>A %</i>	70	78.6	62.5
	<i>B %</i>	20	7.1	37.5
	<i>C %</i>	0	7.1	0
<b>HCC Stage</b>	<i>Stage I %</i>	50	42.9	37.5
	<i>Stage II %</i>	30	21.4	25

**Supplementary Table S2: Set of primers used in the current study.**

<b>Human primers</b>
ACC FP: 5'-GCAGGTCACACGTCTCTTTAT-3' ACC RP: 5'-CCAGCCTGTCATCCTCAATATC-3'
SREBP1 FP: 5'-GAGCCATGGATTGCACTTTC-3' SREBP1 RP: 5'-AGCATAGGGTGGGTCAAATAG-3'
L-FABP FP: 5'-GGAATGTGAGCTGGAGACAA-3' L-FABP RP: 5'-AGTTCGGTCACAGACTTGATG
SCD1 FP: 5'-CTCTTTCTGCTCTGCCATCTT-3' SCD1 RP: 5'-CCCGACTTCACCTCCTTAAATC-3'
FASN FP: 5'-CTAGGTTTGATGCCTCCTTCTT-3' FASN RP: 5'-GATGGCTTCATAGGTGACTTCC-3'
PPAR $\gamma$ FP: 5'-CTCAAACGAGAGTCAGCCTTTA-3' PPAR $\gamma$ RP: 5'-GTGGGAGTGGTCTTCCATTAC-3'
FGF23: FP: 5'-TAACCCATCCCTCAGCAAAC -3' FGF23: RP: 5'-GAGAGGCACAAGGAAGAGAAATA -3'
TIPM2: FP: 5'-CCGAGACAAAGAGGAGAGAAAG -3' TIMP2: RP: 5'-CCTCCTGATACGGGTGCCATAA -3'
TGF $\beta$ : FP: 5'- GTAAGAAGCACCAGCTTGATGT-3' TGF $\beta$ : RP: 5'-GTTGGAGCTGTCATCGAAGTAG -3'
Cx3Cr1 FP: 5'- GCCCTTCTGGACTCACTATTT-3' Cx3Cr1 RP: 5'-CTTTGGCTTTCTTGTGGTTCTT -3'
AST FP: 5'-CGAATTTTGAGACTGGGATTAGA -3' AST RP: 5'-CACTCTGGGTGAGATGATGAA -3'
p21 FP: 5'-CGCTCTACATCTTCTGCCTTAG -3' p21 RP: 5'- CGGGATGAGGAGGCTTTAAATA-3'
CYTOKERATIN-7: FP: 5'-GCTGTCCGGTGGTTAATTTTC-3' CYTOKERATIN-7: RP: 5'-CAACAAGTTTTCTCCCTCATC-3'
MMP2 FP: 5'-CCGTGGTGAGATCTTCTTCTTC-3' MMP2 RP: 5'-GGTTCTCCAGCTTCAGGTAATAG-3'
PPAR $\alpha$ FP: 5'-GTTCTGGAAGCTTTGGCTTTAC-3' PPAR $\alpha$ RP: 5'-GCGTGGACTCCGTAATGATAG-3'
NOTCH1 FP: 5'-CGTCATCTCCGACTTCATCTAC-3' NOTCH1 RP: 5'-CTCCCTGTTGTTCTCCATATCT-3'
NOTCH2 FP: 5'-ACCGACAGACAAATCAGGTAAG-3' NOTCH2 RP: 5'-CTTCTCCTTGGGCCAGTTAAT-3'
NOTCH3 FP: 5'-GGATGGCGTCAACACCTATAA-3' NOTCH3 RP: 5'-GGCAGGCACAGTAGAAAGAA-3'
NOTCH4 FP: 5'- CTGCGATAATGCGAGGAAGATA-3' NOTCH4 RP: 5'-CTCCTGTGGCCTGTCTTATTT-3'
HES1 FP: 5'- GCCAGTTTGCTTTCTTCATTC-3' HES1 RP: 5'- AGTGCATGGTCAGTCACTTAATA-3'
GAPDH FP: 5'- CCACCCAGAAGACTGTGGAT -3' GAPDH RP: 5'- GTTGAAGTCAGAGGAGACCACC -3'

<b>Mouse primers</b>
mTGFβ FP: 5'-CCAGATCCTGTCCAAACTAAGG-3' mTGFβ RP: 5'-CTTCCCGAATGTCTGACGTATT-3'
mTIMP2 FP: 5'-GGTCACAGAGAAGAGCATCAA-3' mTIMP2 RP: 5'-CTGCCTGTAGCAAGGATCAA-3'
mp21 FP: 5'-CAGACCAGCCTGACAGATTT-3' mp21 RP: 5'-TAGGACTGTTCCCTCCGGTATAG-3'
mMMP2 FP: 5'-GCTCTGTCCTCCTCTGTAGTTA-3' mMMP2 RP: 5'-CCCTCCTAAGCCAGTCTCTATTA-3'
mAST FP: 5'-CCCAAGCAGGTCGAGTATTT-3' mAST RP: 5'-CAGCTAGGTACAGCTAGGTTTG-3'
mNotch1 FP: 5'-CTCATTCTACCTGCACCCTAAC-3' mNotch1RP: 5'-GCTGTCACTCTTCCTGCTAAA-3'
mNotch2 FP: 5'-GAATGGAGGAACGTGCAATAAC-3' mNotch2RP: 5'-TTCATACACGGCTTGGAGATAC-3'
mNotch3 FP: 5'-GCCASTGTCCTCTTGTTATAC-3' mNotch3RP: 5'-GCTGACACTCATCCACATCTT-3'
mNotch 4 FP: 5'-GAGGTTTGCCAGCTCCTATT-3' mNotch 4 RP: 5'-CTACTGTCCTGGGCATCTTTATC-3'
mGAPDH FP: 5'-GGAGAAACCTGCCAAGTATGA-3' mGAPDH RP: 5'-CCTGTTGCTGTAGCCGTATT-3'

Figure S1

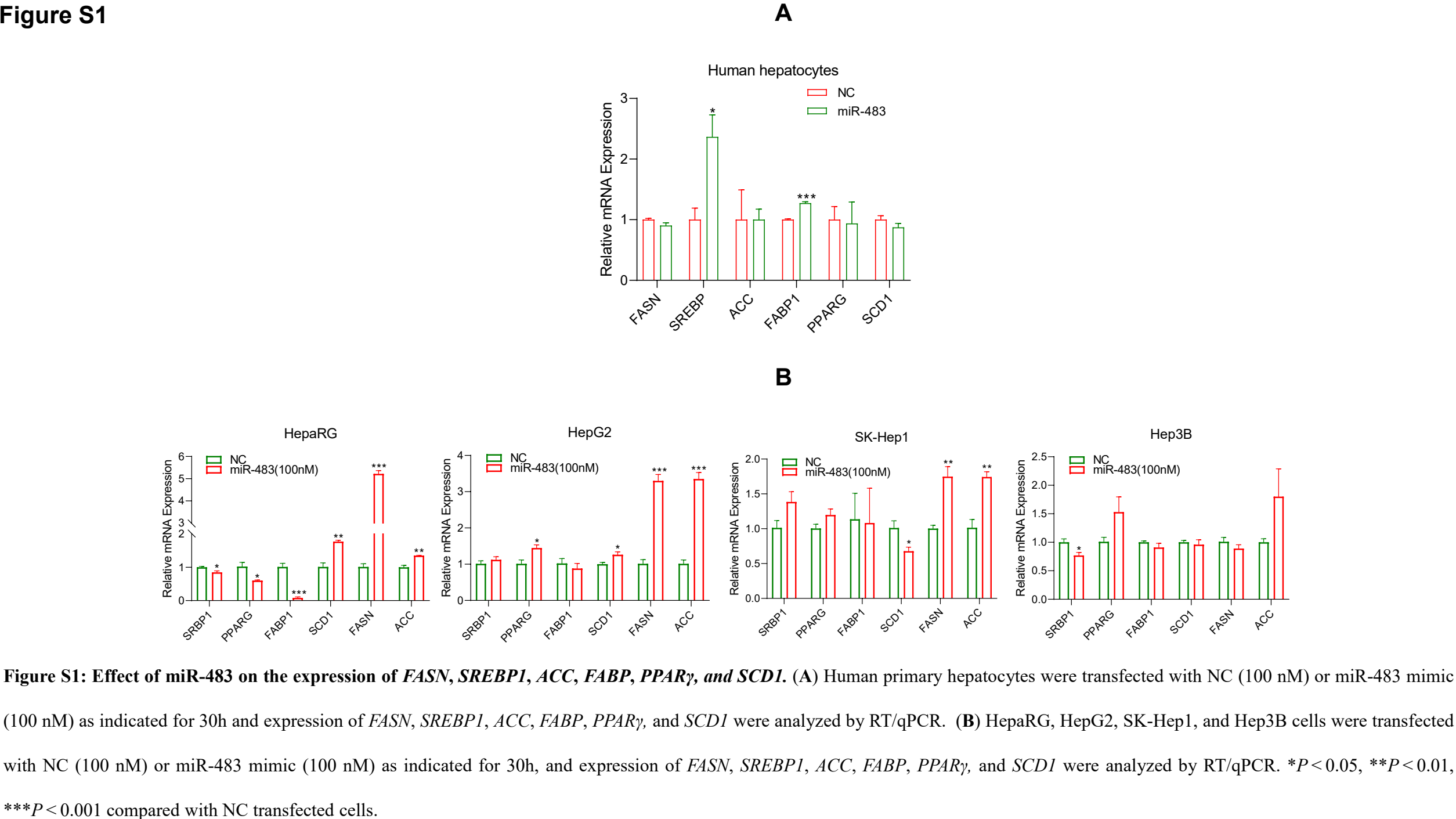
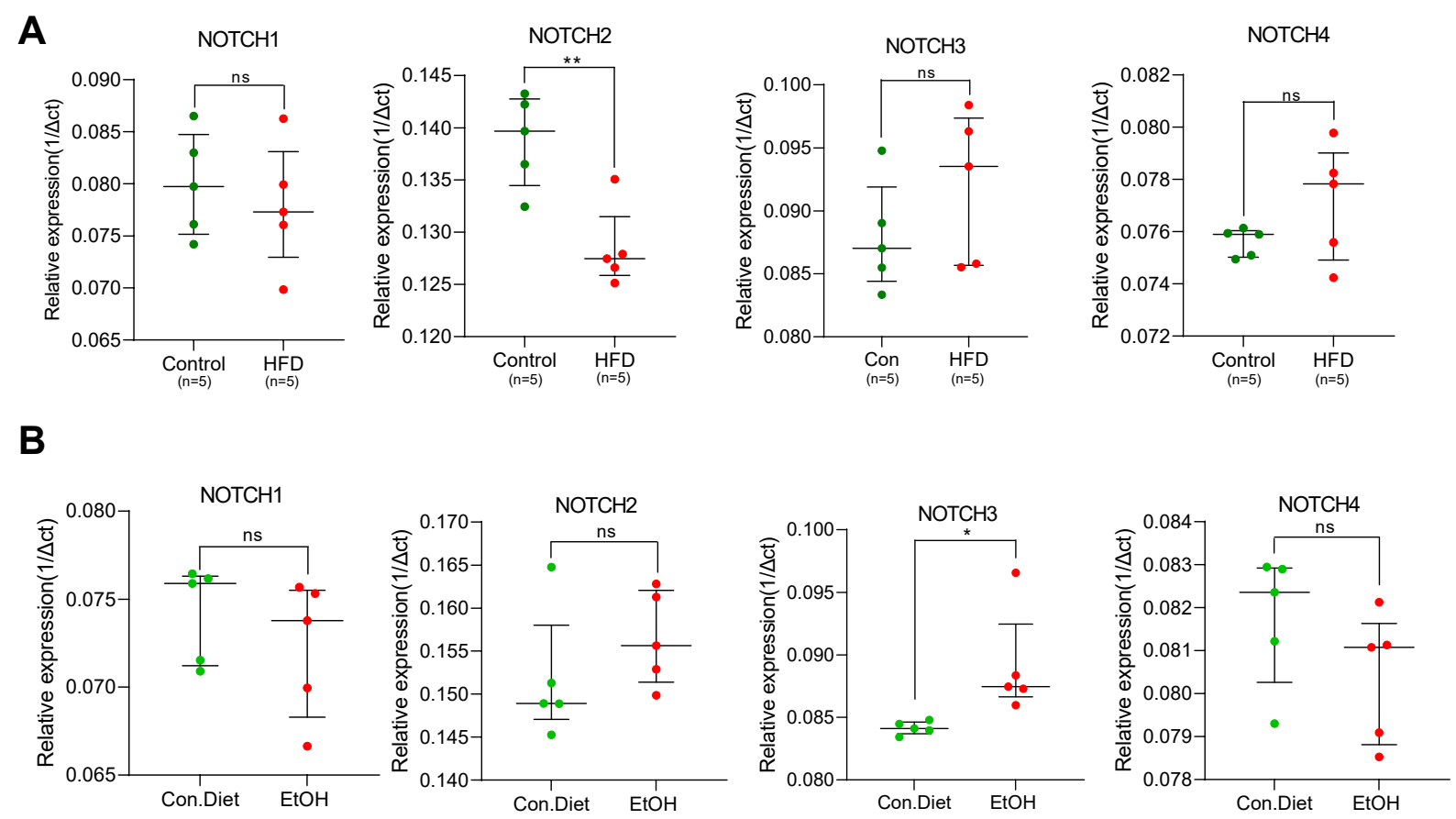


Figure S2



**Figure S2: Expression of *Notch 1*, *Notch 2*, *Notch 3*, and *Notch 4* in the liver of NAFLD and AFLD mice model.** (A&B) Male C57BL/6J mice pair-fed with control diet (n=5) or HFD for 16 weeks or EtOH diet (n=5) for 8 weeks, total RNAs from liver tissues were isolated and the expression of *Notch 1*, *Notch 2*, *Notch 3*, and *Notch 4* gene expression were analyzed by RT/qPCR. \* $P < 0.05$ , \*\* $P < 0.01$ , compared with control diet-fed mice. Ns- not significant.

Uncropped Western blots  
Figure 1 D

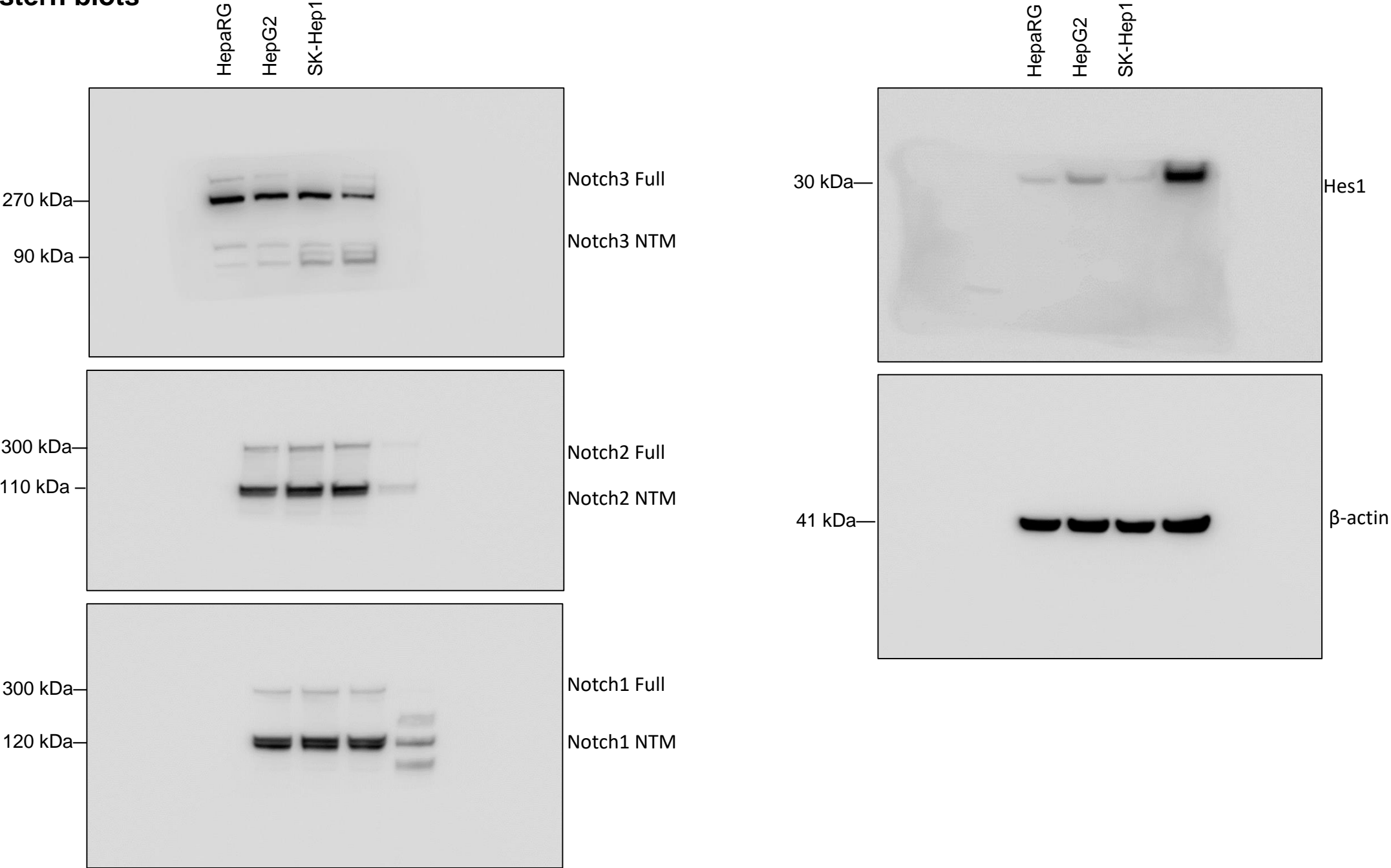


Figure 2 D

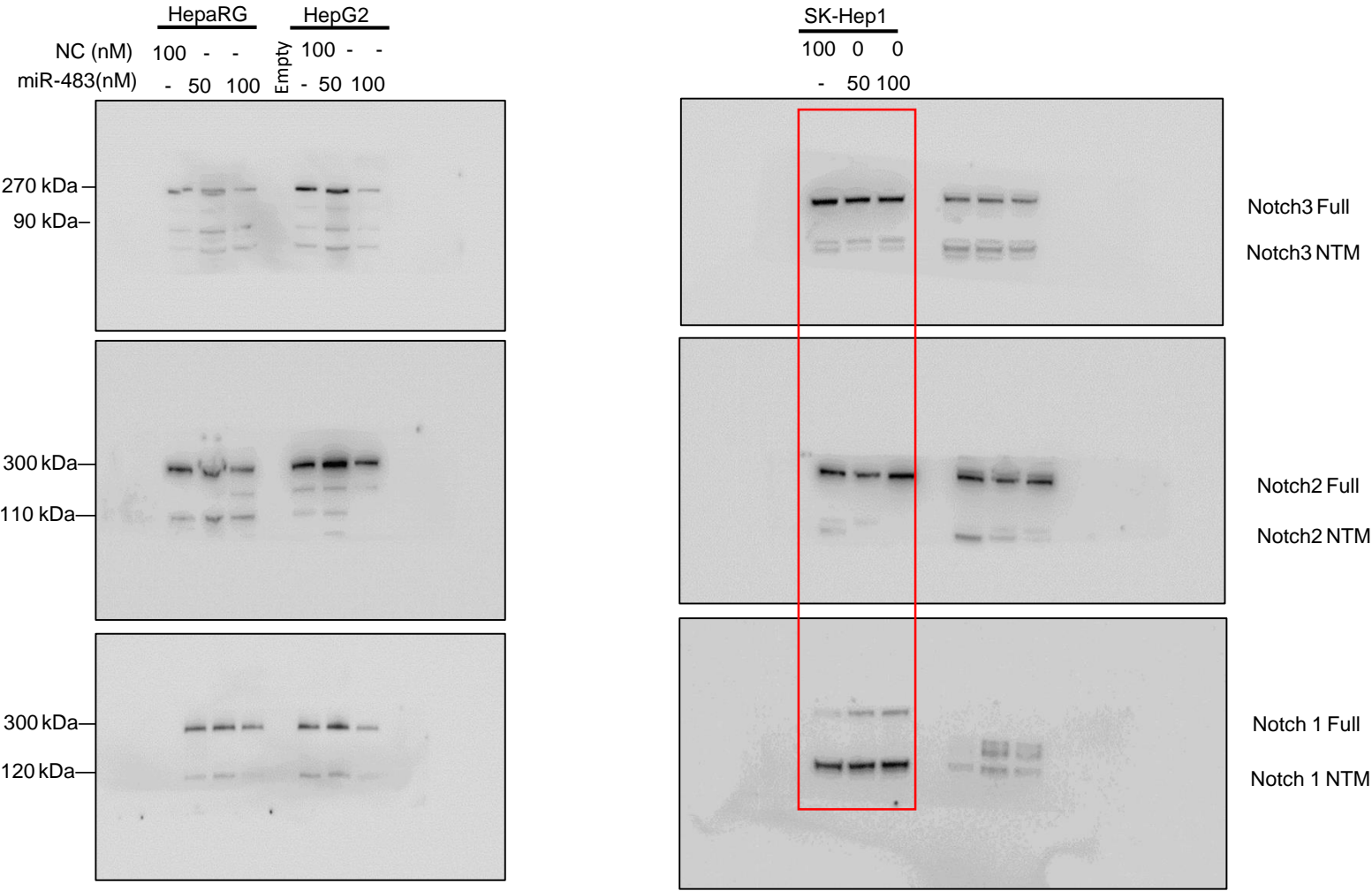


Figure 2 D

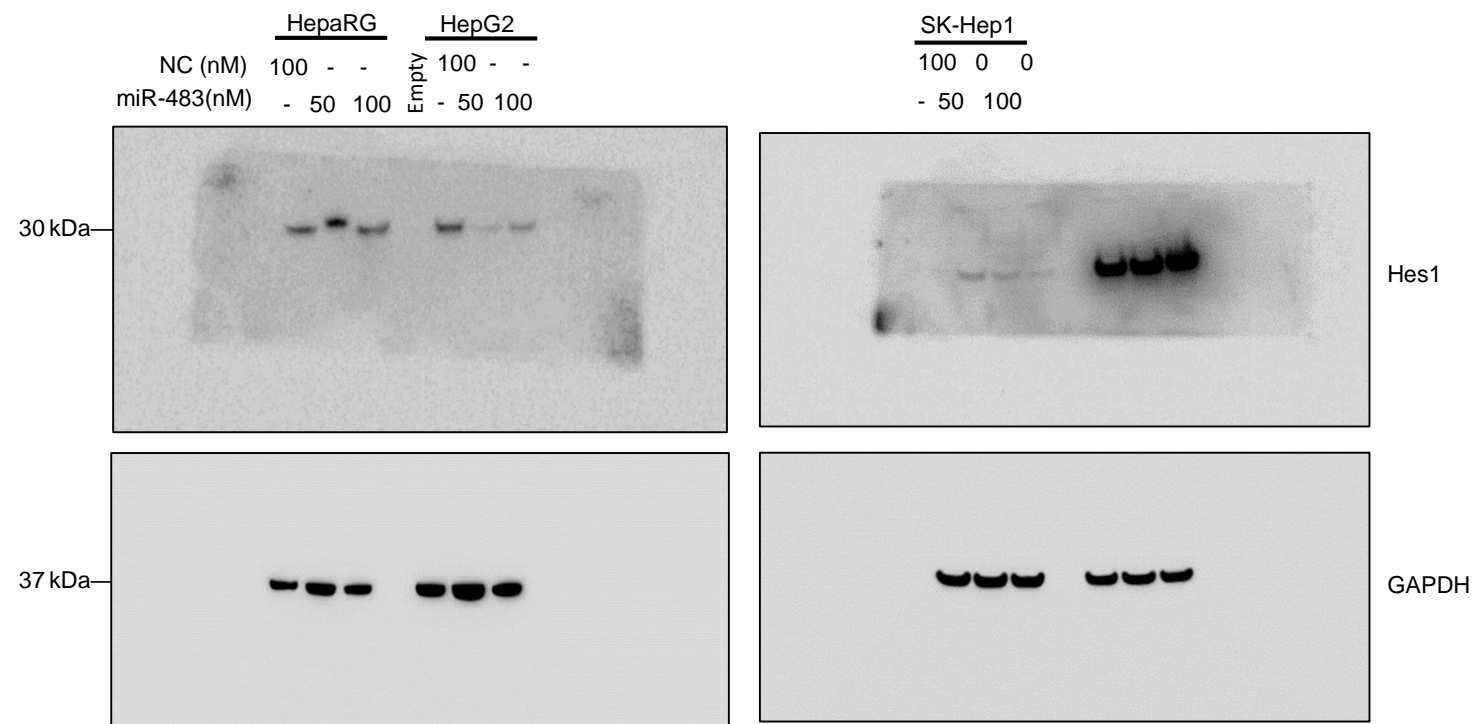




Figure 2 E

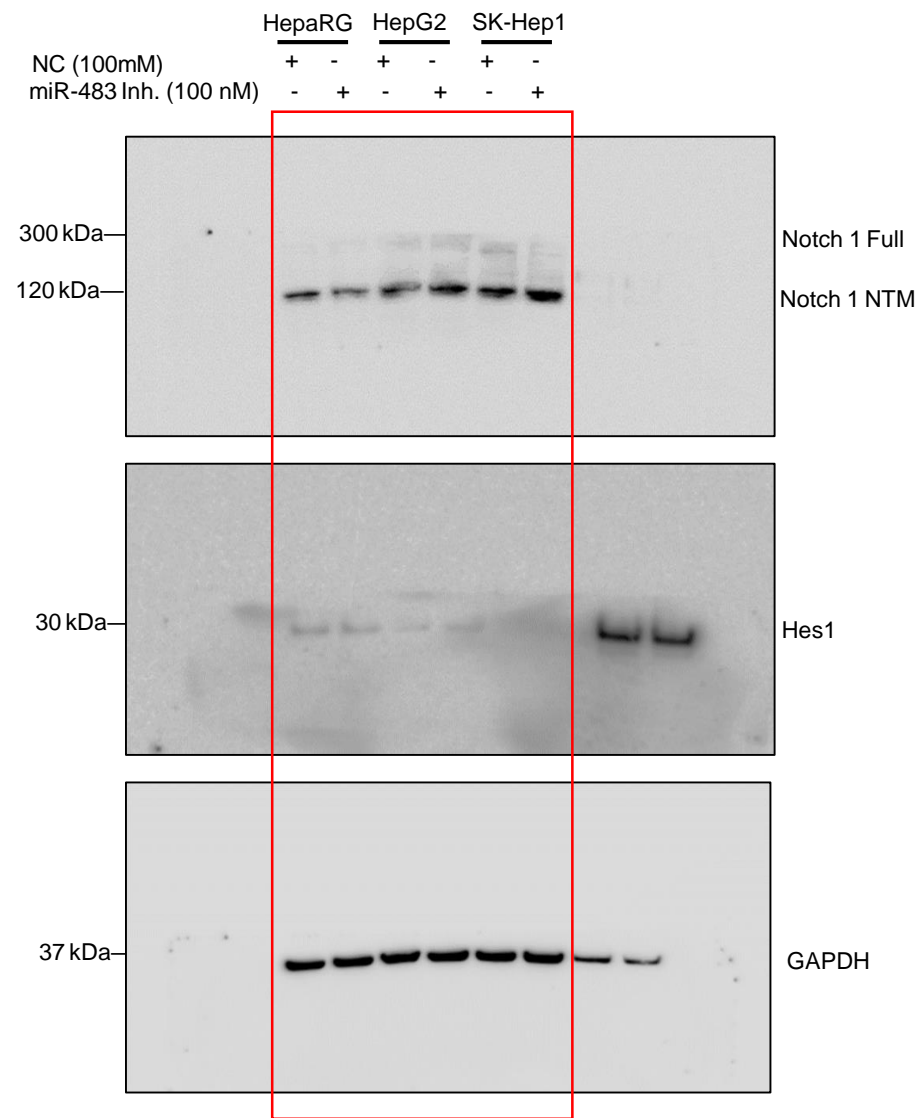
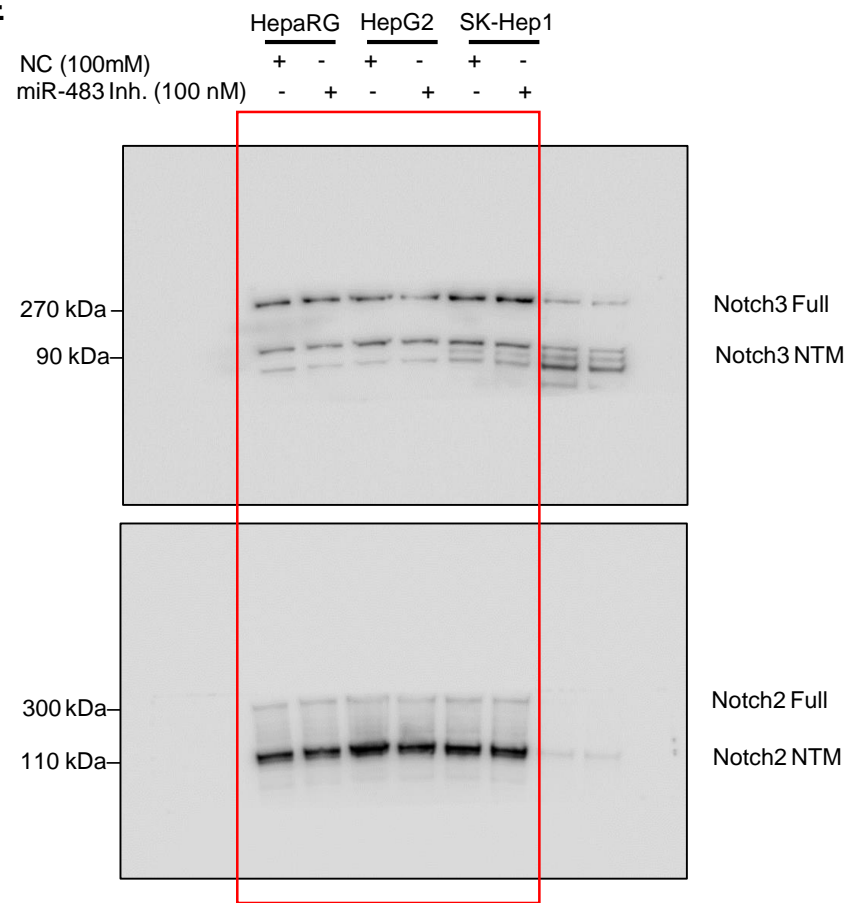


Figure 3 D

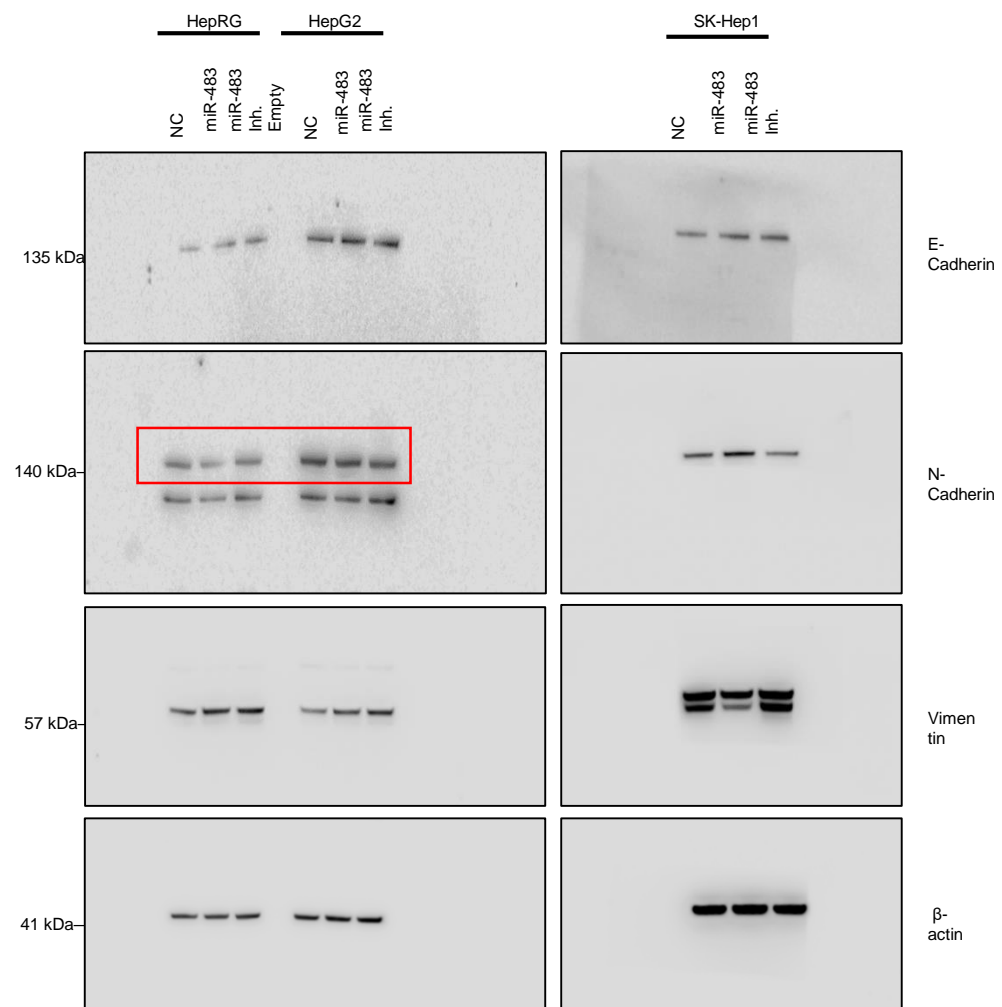


Figure 3 E

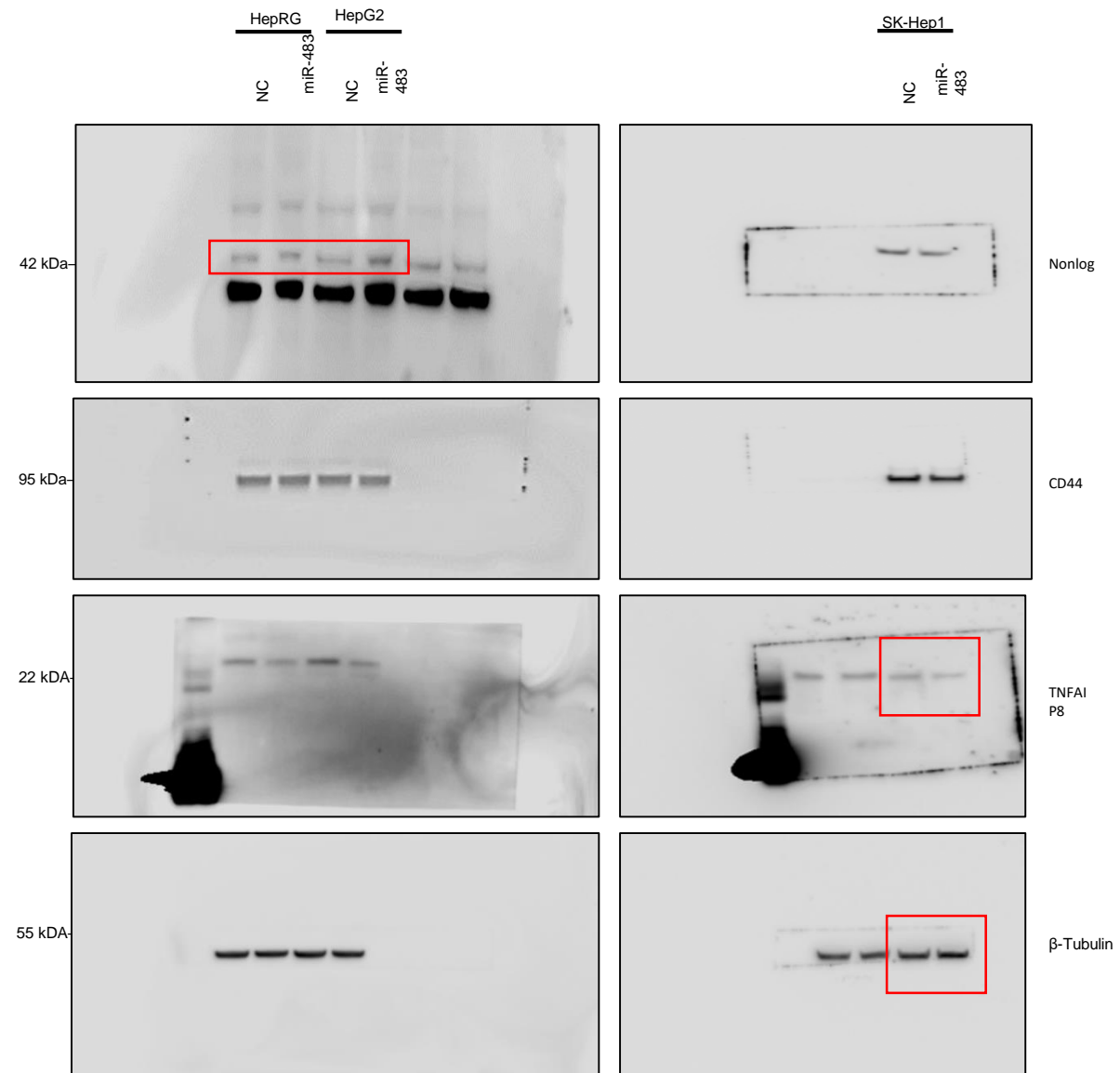


Figure 3 F

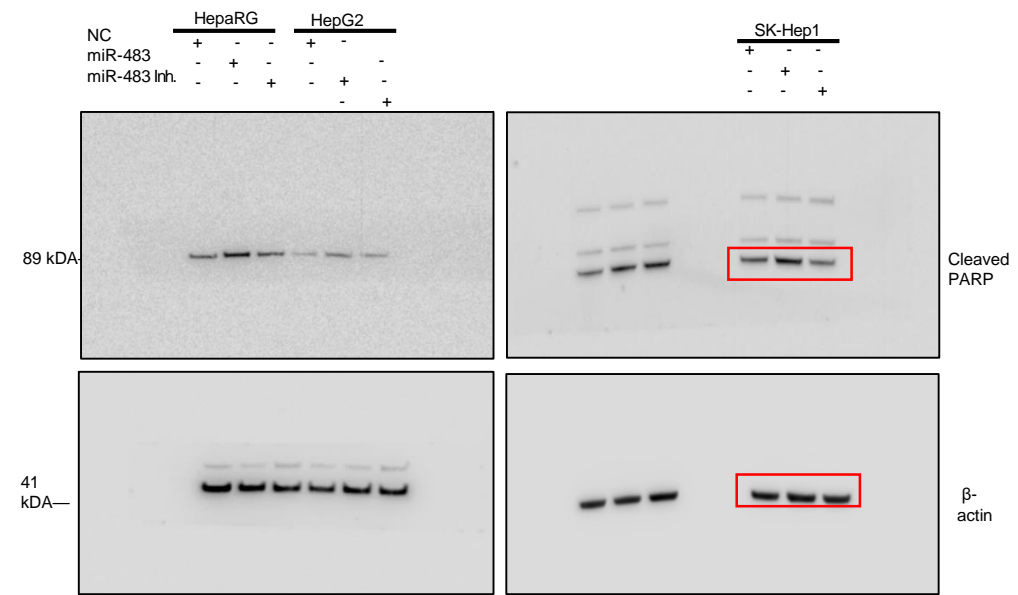
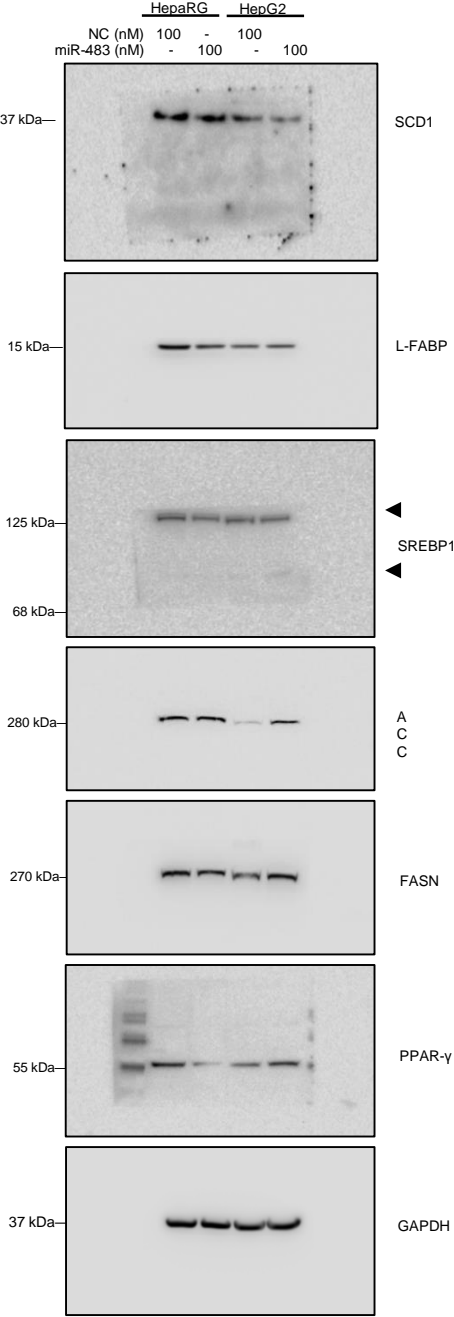
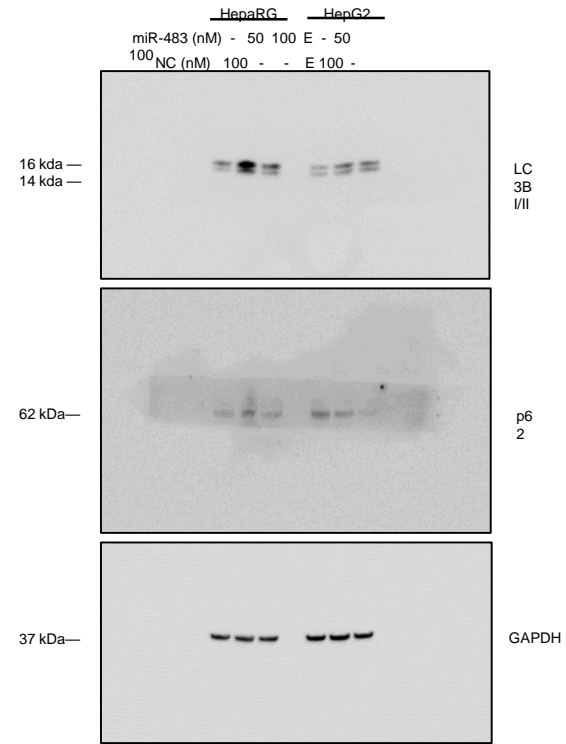


Figure E  
4



**Figure  
4**



**F**

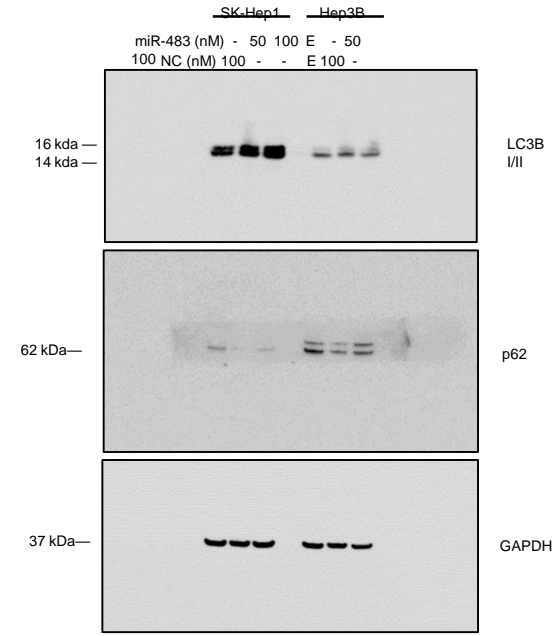


Figure 5 B

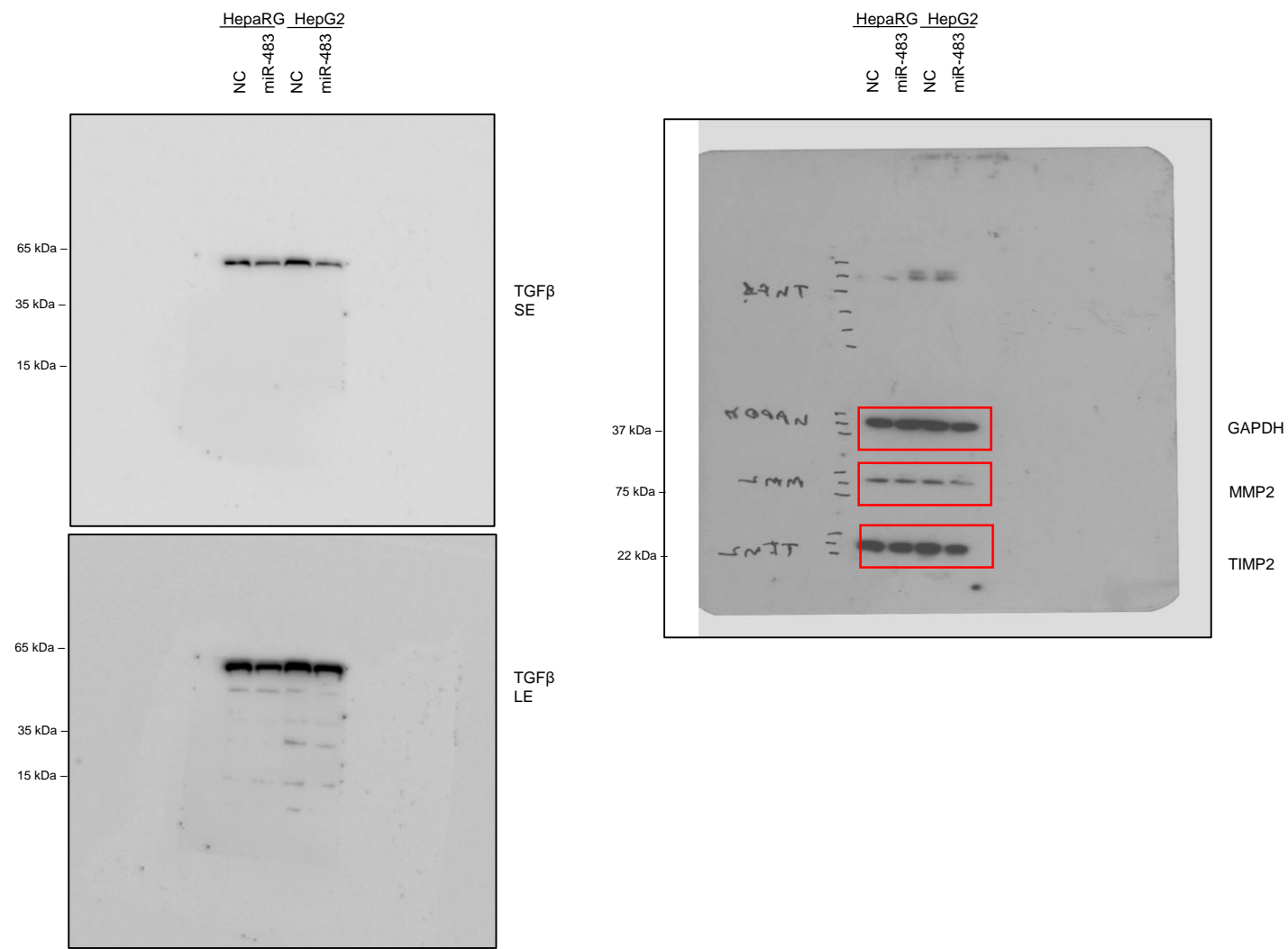


Figure 5 D

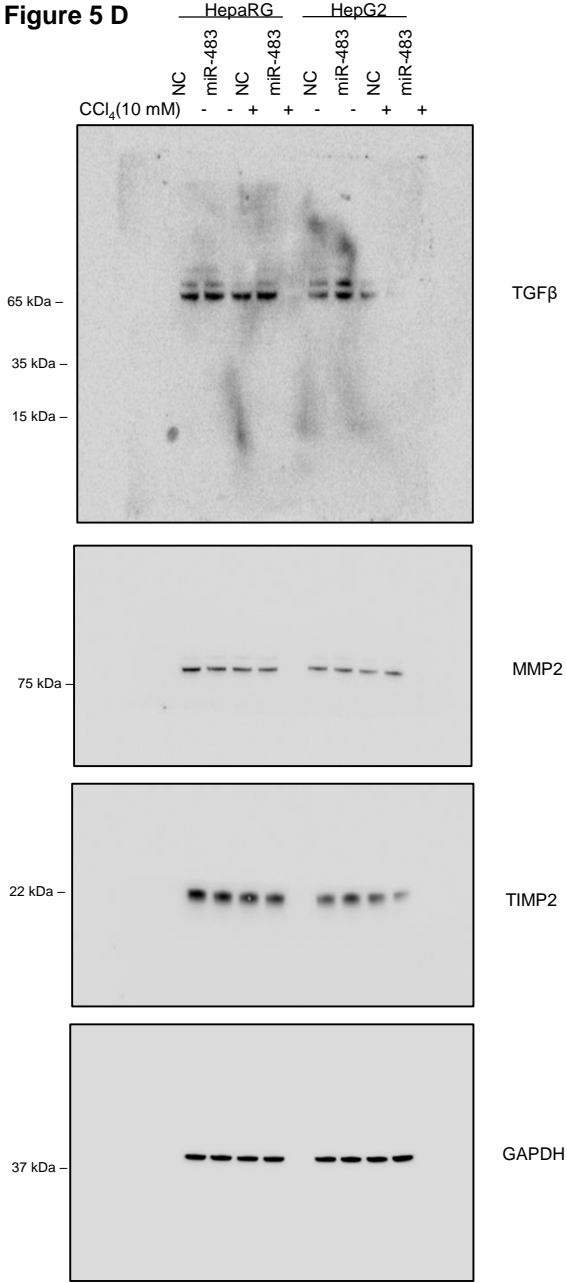




Figure 6 C

