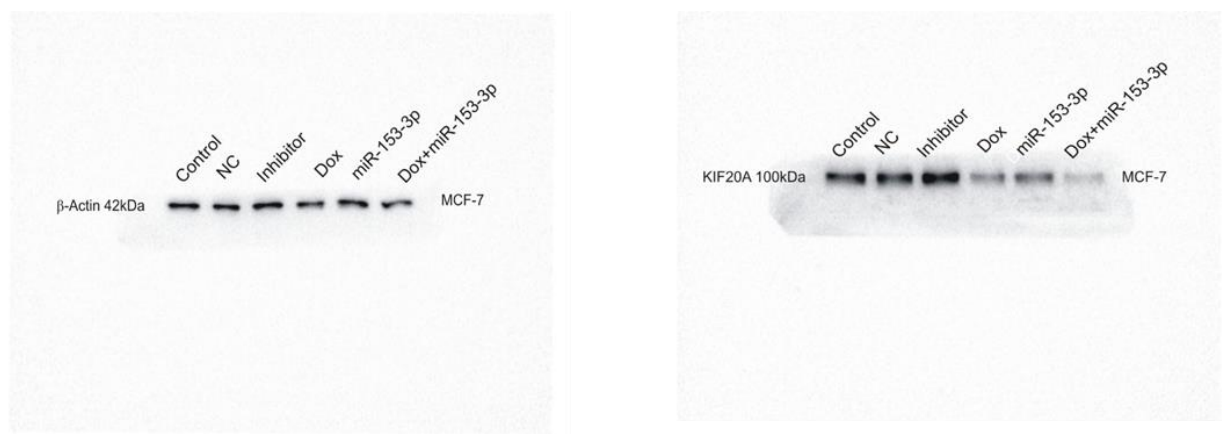


# Mir-153-3p Modulates the Breast Cancer Cells' Chemosensitivity to Doxorubicin by Targeting KIF20A

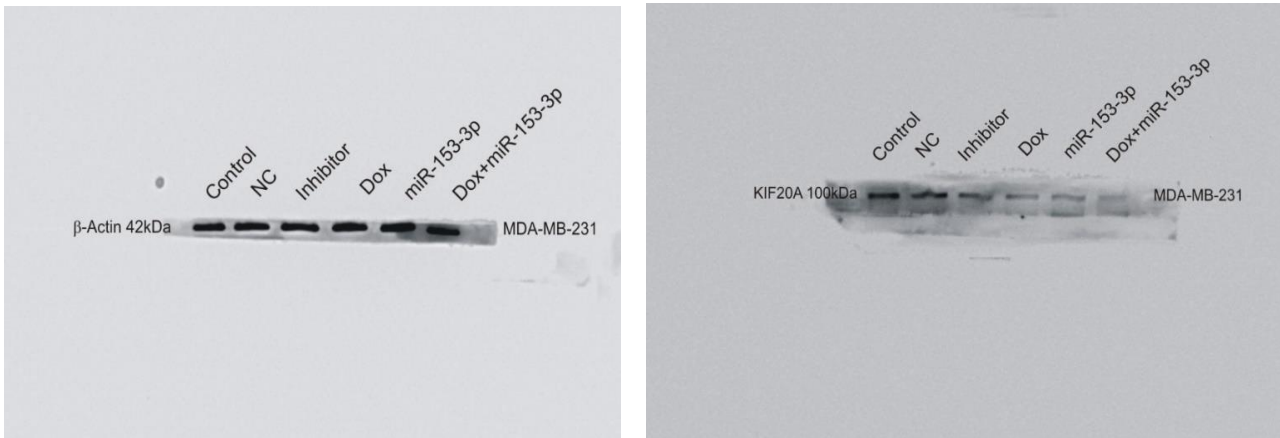
## Western blots details

Figure 3: MCF-7 Cell line.



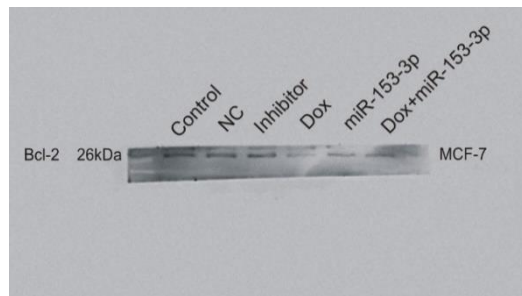
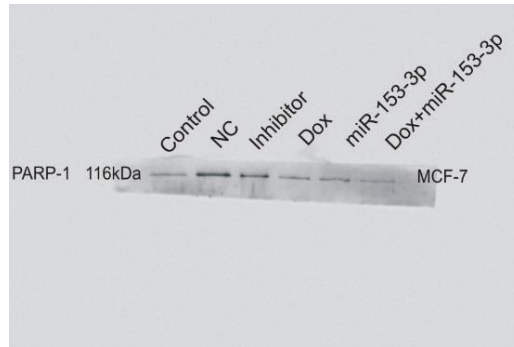
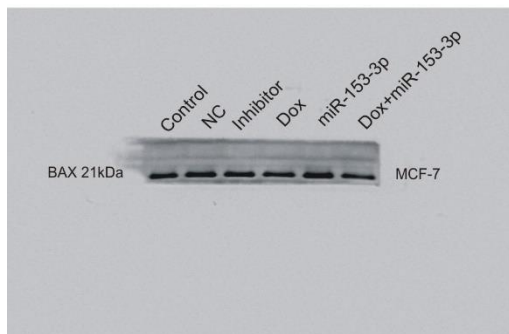
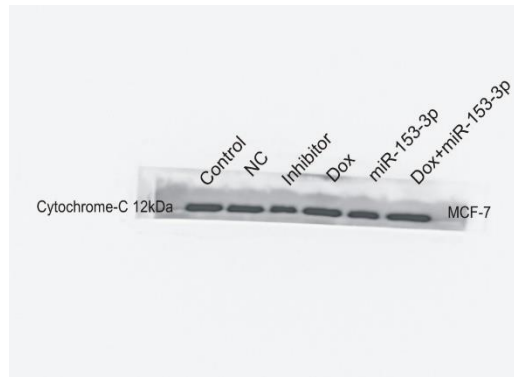
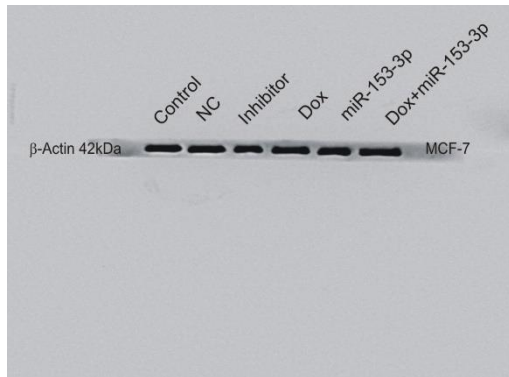
KIF20A (MCF-7)	
KIF20A/β-Actin Ratio in percentage	
Control	100
NC	98.89
Inhibitor	122.37
Dox	52.94
miR-153-3p	59.54
Dox+miR-153-3p	37.68

**Figure 3: MDA-MB-231 Cell line.**



KIF20A (MDA-MB-231)	
KIF20A/β-Actin Ratio in percentage	
Control	100
NC	86.5695
Inhibitor	82.60747
Dox	54.0817
miR-153-3p	42.9246
Dox+miR-153-3p	36.4982

**Figure 4:**



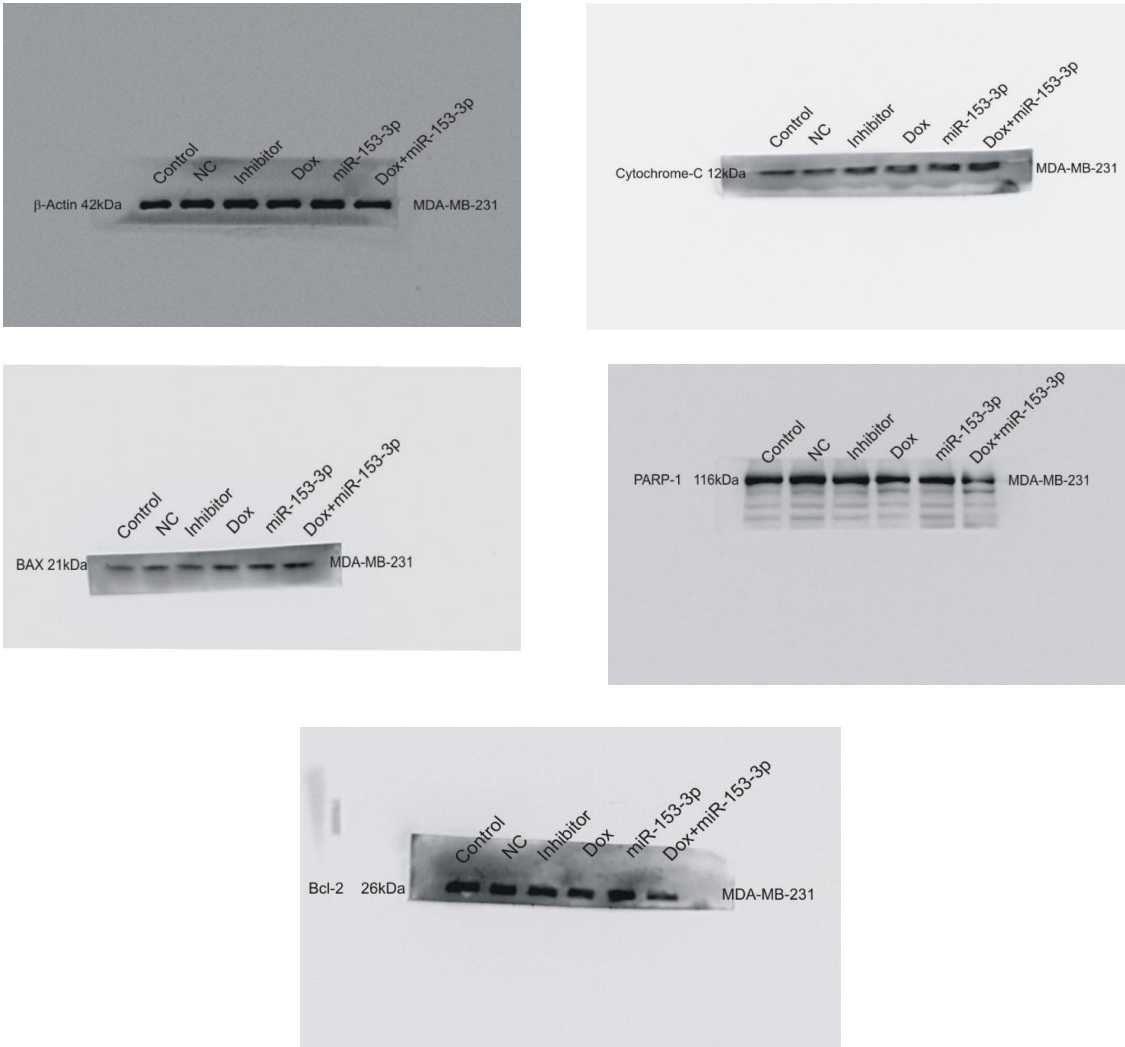
<b>Cytochrome-C (MCF-7)</b>	
Cytochrome-C / $\beta$ -Actin Ratio in percentage	
Control	100
NC	106.91
Inhibitor	104.709
Dox	113.27
miR-153-3p	120.82
Dox+miR-153-3p	127.66

<b>BAX (MCF-7)</b>	
BAX / $\beta$ -Actin Ratio in percentage	
Control	100
NC	91.2528
Inhibitor	91.8334
Dox	92.6008
miR-153-3p	105.5758333
Dox+miR-153-3p	97.6096

<b>PARP1 (MCF-7)</b>	
PARP1/ $\beta$ -Actin Ratio in percentage	
Control	100
NC	109.03
Inhibitor	109.12
Dox	94.51
miR-153-3p	64.88
Dox+miR-153-3p	49.90

<b>Bcl-2 (MCF-7)</b>	
Bcl-2/ $\beta$ -Actin Ratio in percentage	
Control	100
NC	78.85
Inhibitor	71.44
Dox	22.53
miR-153-3p	15.57
Dox+miR-153-3p	4.51

**Figure 5:**



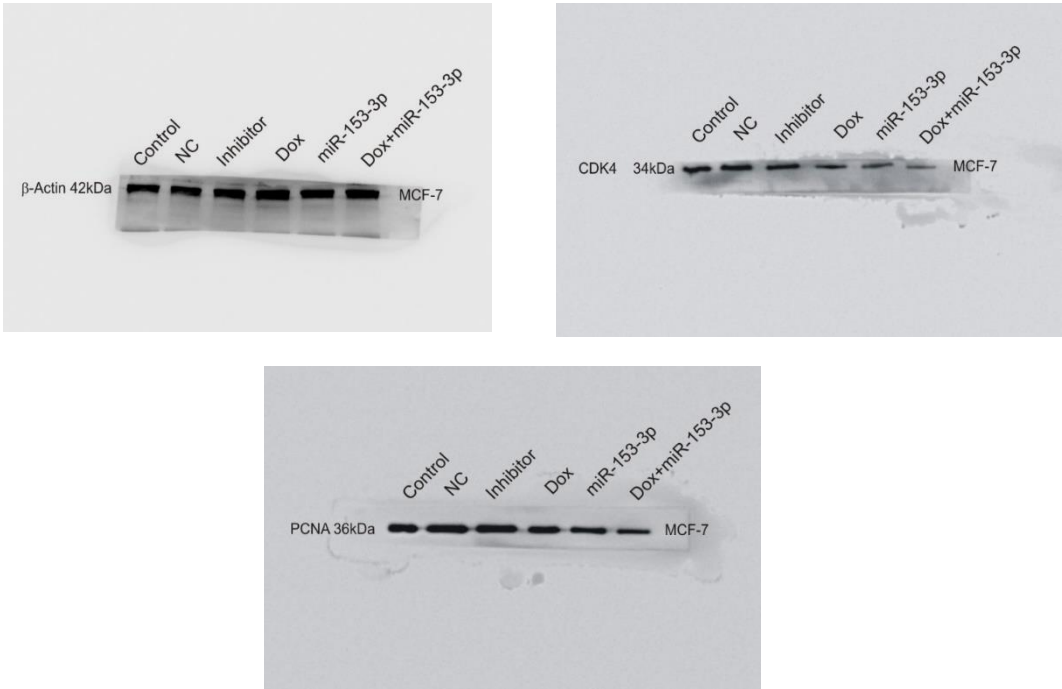
Cytochrome-C (MDA-MB-231)	
Cytochrome-C / $\beta$ -Actin Ratio in percentage	
Control	100
NC	81.41
Inhibitor	84.7
Dox	97.71
miR-153-3p	111.5
Dox+miR-153-3p	122.5

BAX (MDA-MB-231)	
BAX / $\beta$ -Actin Ratio in percentage	
Control	100
NC	138.5
Inhibitor	119.9
Dox	169.1
miR-153-3p	174.8
Dox+miR-153-3p	180.1

PARP1 (MDA-MB-231)	
PARP1/ $\beta$ -Actin Ratio in percentage	
Control	100
NC	82.12
Inhibitor	87.5
Dox	52.5
miR-153-3p	46.7
Dox+miR-153-3p	35.9

Bcl-2 (MDA-MB-231)	
Bcl-2/ $\beta$ -Actin Ratio in percentage	
Control	100
NC	86.9
Inhibitor	81.9
Dox	57.2
miR-153-3p	75.9
Dox+miR-153-3p	42.5

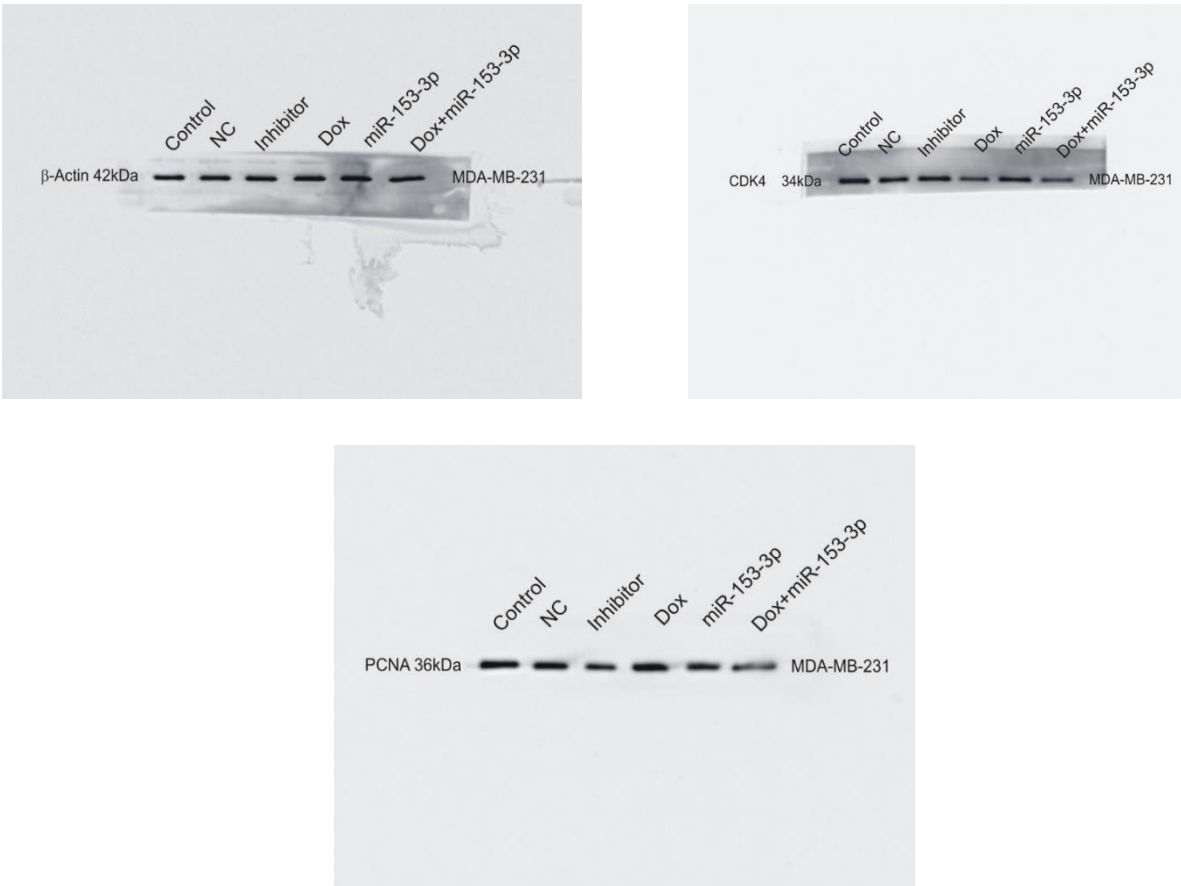
**Figure 8:**



CDK4 (MCF-7)	
CDK4/ $\beta$ -Actin Ratio in percentage	
Control	100
NC	78.98945
Inhibitor	86.57644
Dox	58.49403
miR-153-3p	77.99591
Dox+miR-153-3p	53.93176

PCNA (MCF-7)	
PCNA / $\beta$ -Actin Ratio in percentage	
Control	100
NC	119.2648
Inhibitor	115.6589
Dox	81.85907
miR-153-3p	70.72523
Dox+miR-153-3p	64.5823

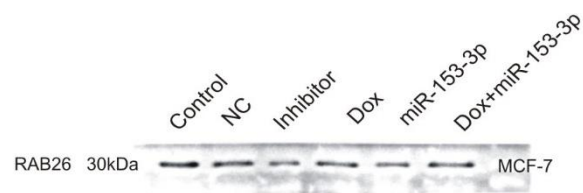
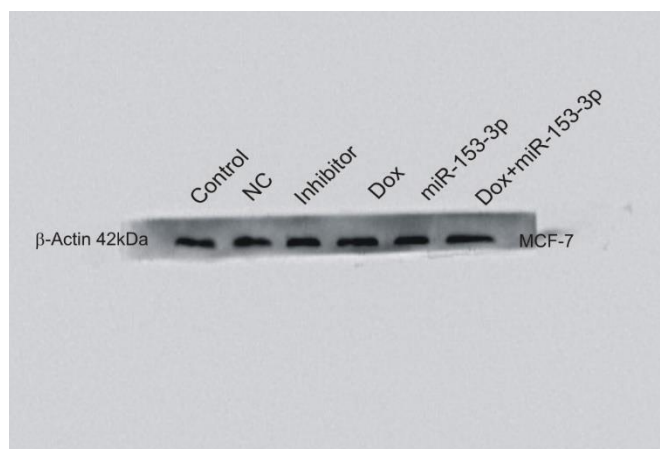
**Figure 9:**



CDK4 (MDA-MB-231)	
CDK4/ $\beta$ -Actin Ratio in percentage	
Control	100
NC	109.40
Inhibitor	110.26
Dox	91.7
miR-153-3p	74.38
Dox+miR-153-3p	58.06

PCNA (MDA-MB-231)	
PCNA / $\beta$ -Actin Ratio in percentage	
Control	100
NC	95.8
Inhibitor	93.5
Dox	95.6
miR-153-3p	74.4
Dox+miR-153-3p	65.5

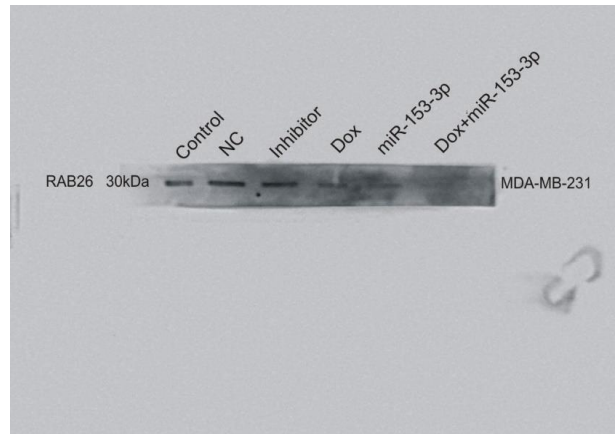
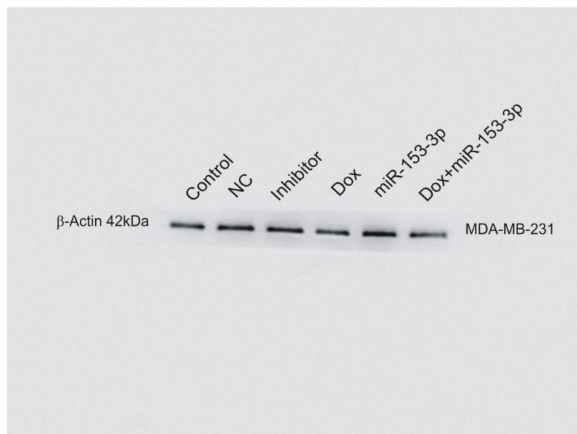
**Figure 10: MCF-7 Cell line**





RAB26 (MCF-7)	
RAB26/ $\beta$ -Actin Ratio in percentage	
Control	100
NC	122.1881
Inhibitor	103.5713
Dox	84.7789
miR-153-3p	85.5201
Dox+miR-153-3p	75.9411

**Figure 10: MDA-MB-231 Cell line**



RAB26 (MDA-MB-231)	
RAB26/ $\beta$ -Actin Ratio in percentage	
Control	100
NC	115.5818
Inhibitor	99.6
Dox	47.8
miR-153-3p	77.2
Dox+miR-153-3p	37.3