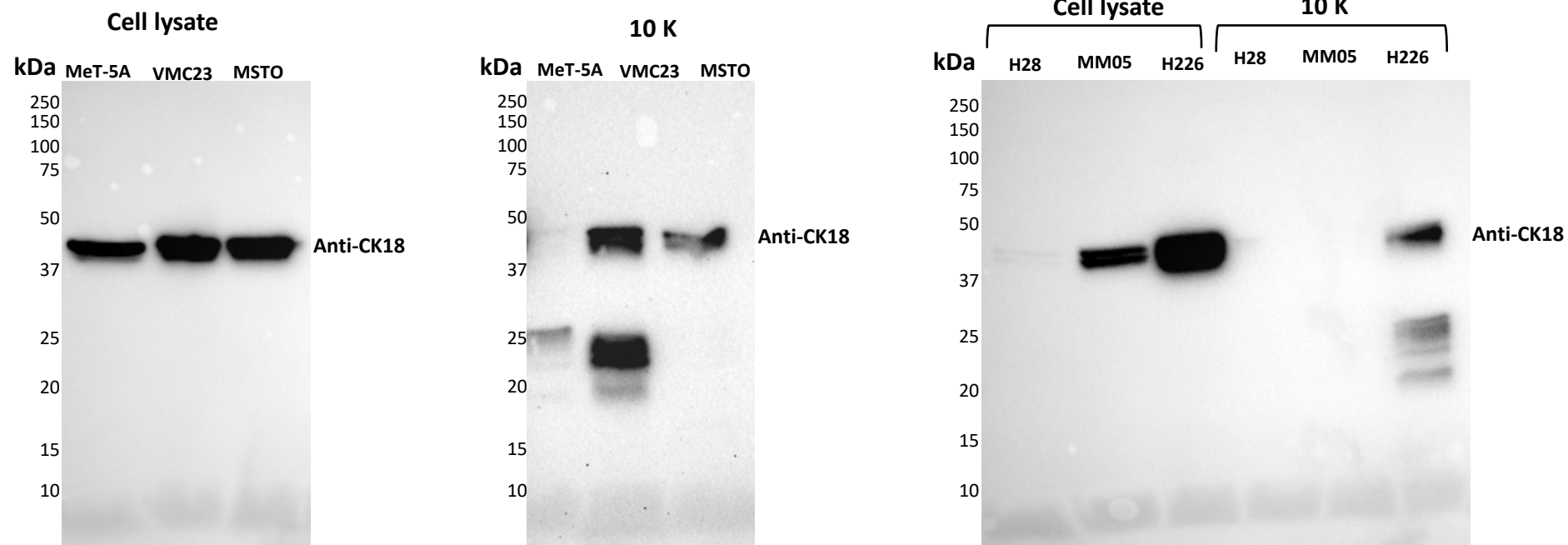
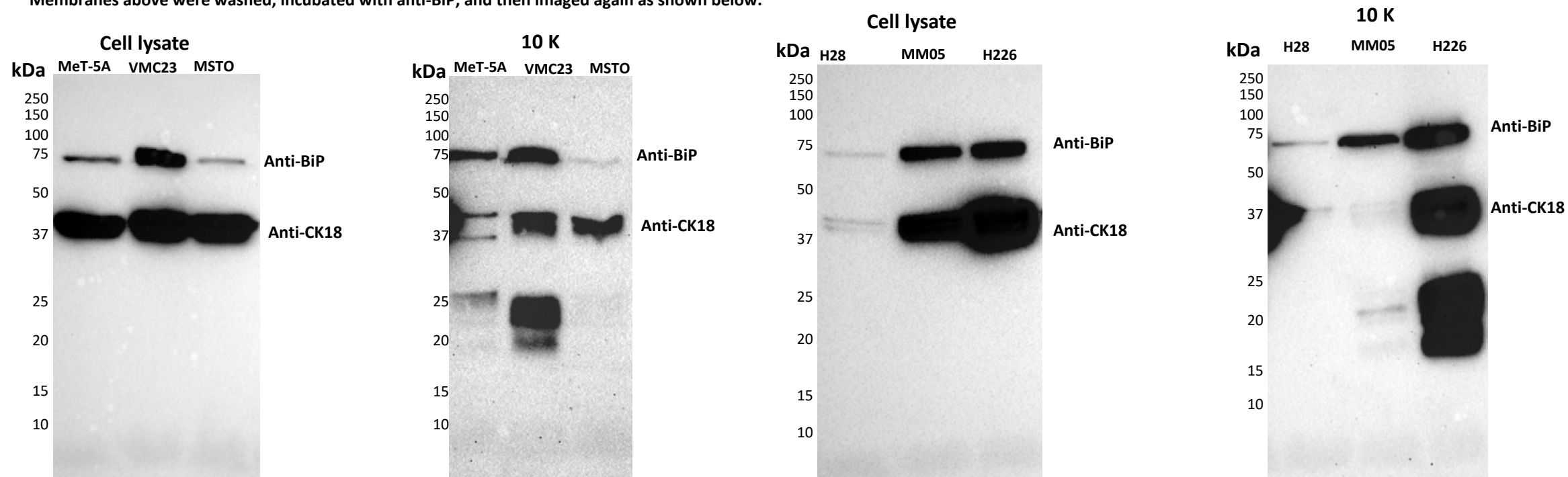


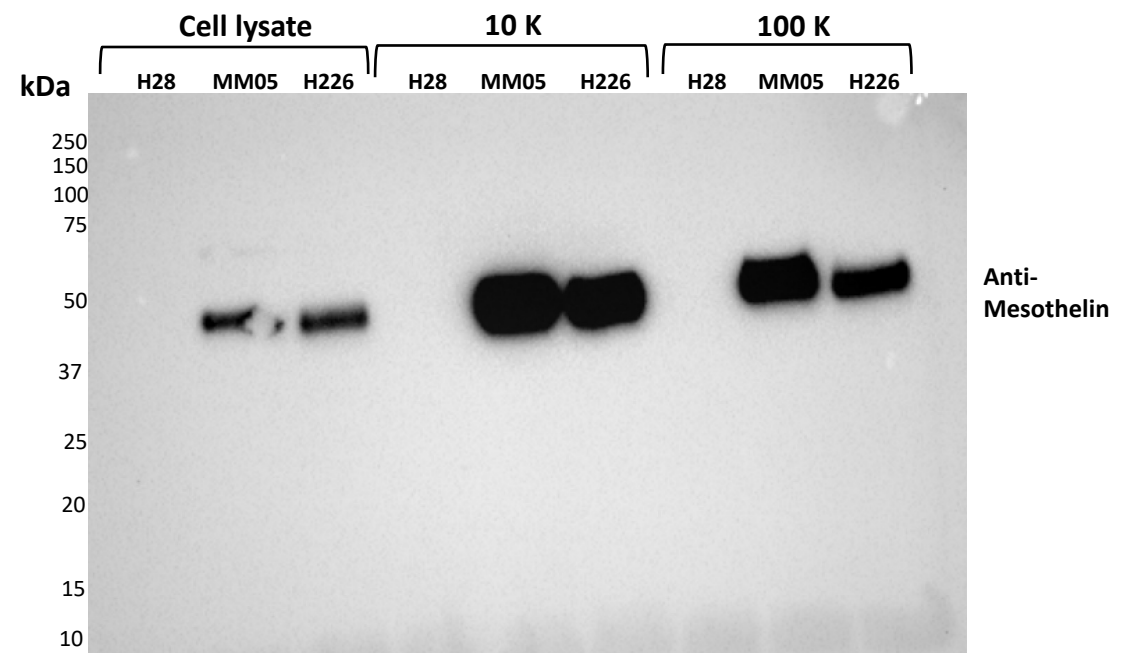
Supplementary Data

- Data shown are uncropped western blot images.
- Please note that with antibodies which had a large difference in their molecular weights, the membranes were imaged with two antibodies as follows:
 1. Membrane was incubated with the first antibody.
 2. Membrane was washed, stained and imaged, as described in the Methods section, to obtain the images for the first antibody.
 3. Membrane was then washed again three times and incubated with the second antibody.
 4. Membrane was washed three times, stained, and imaged again to obtain images for the second antibody.

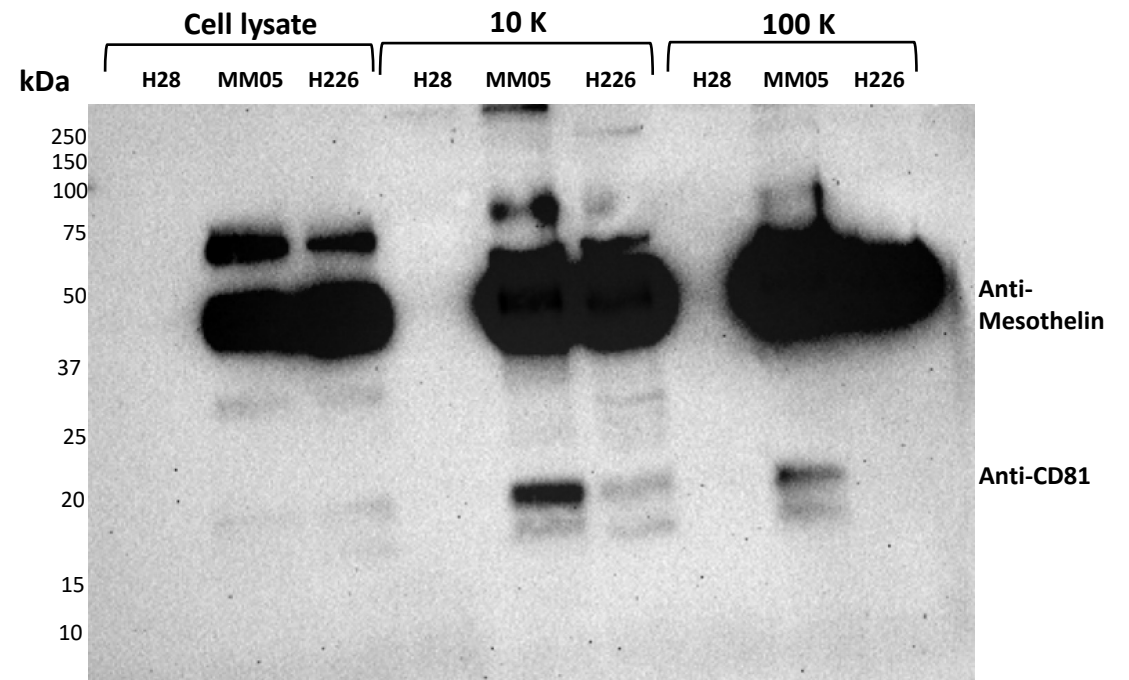
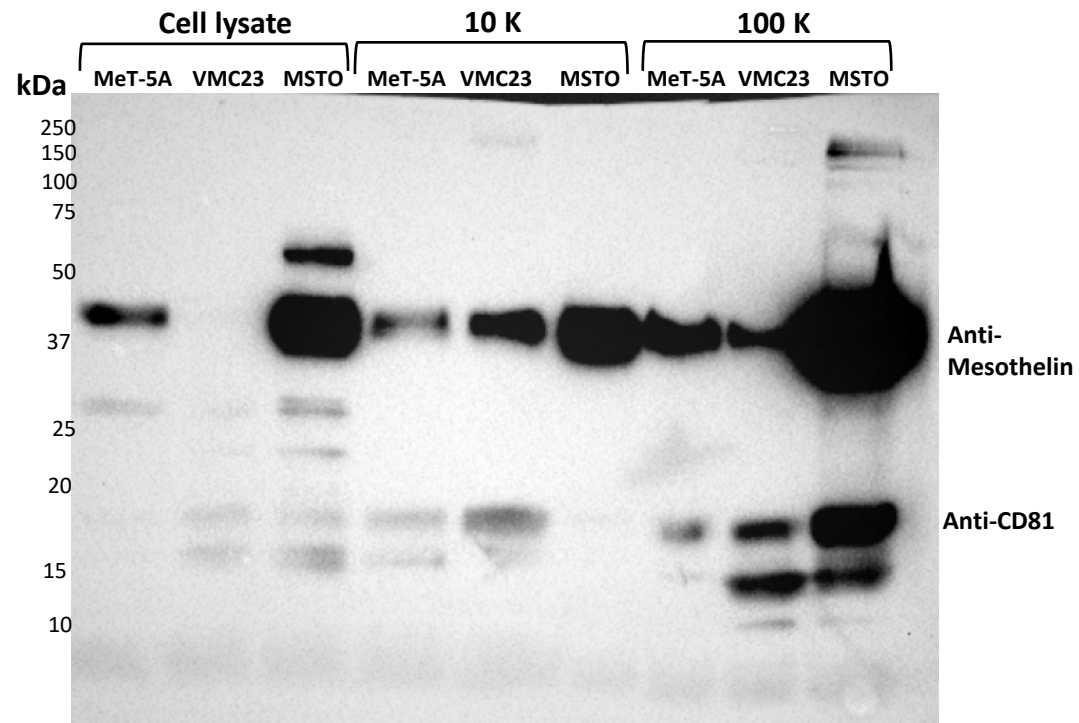


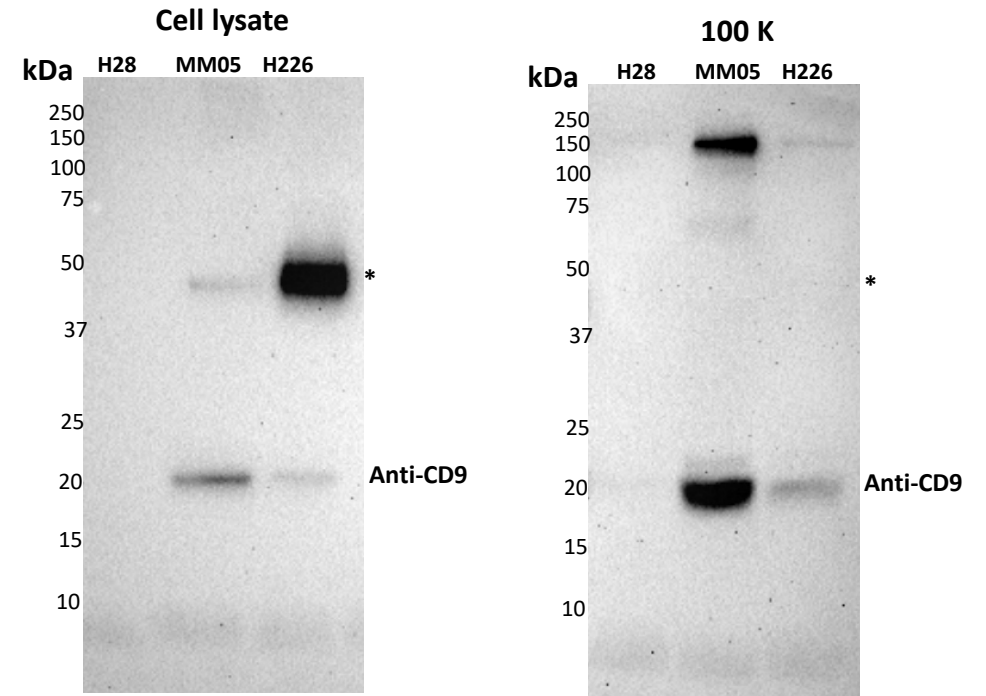
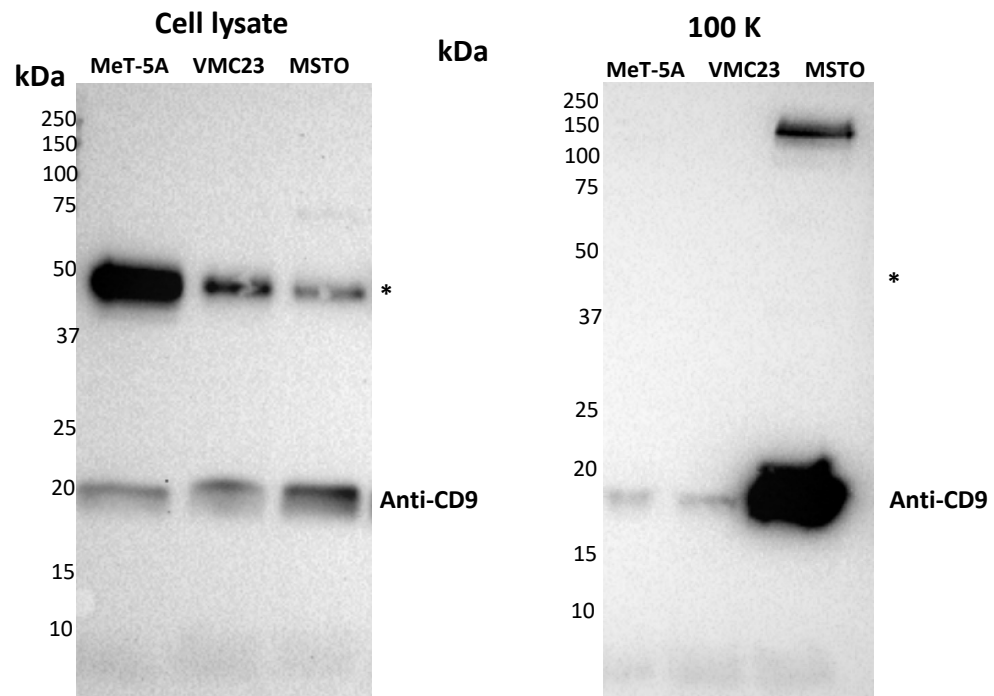
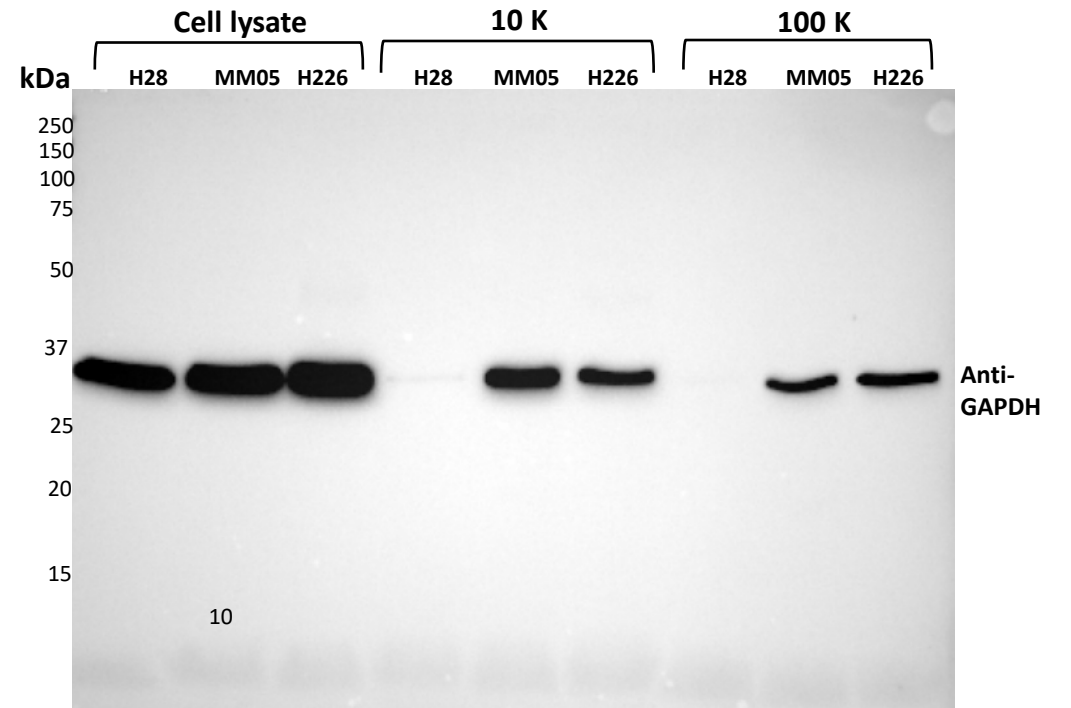
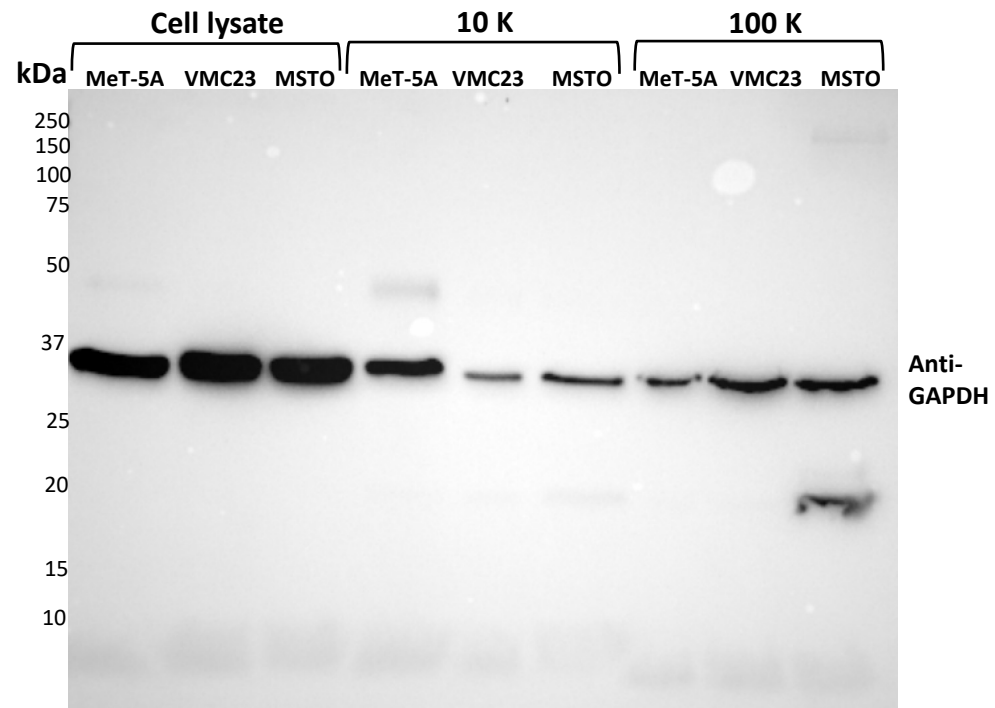
Membranes above were washed, incubated with anti-BiP, and then imaged again as shown below.

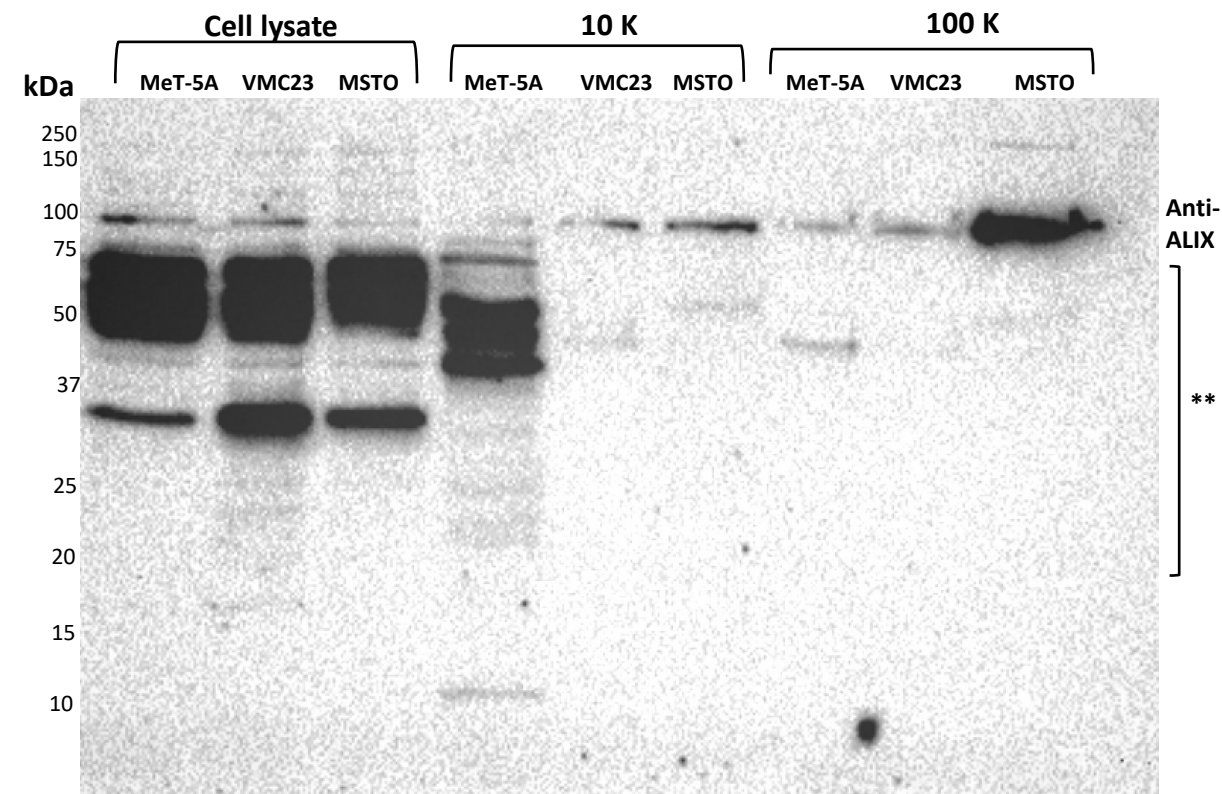
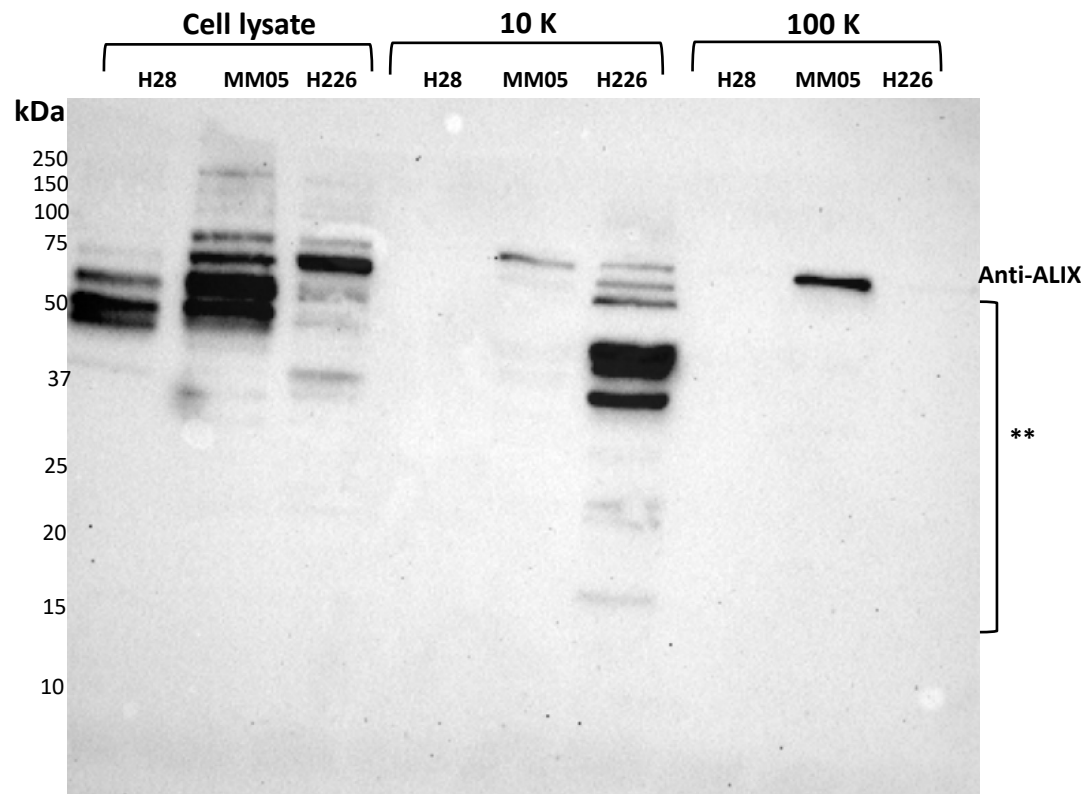




Membranes above were washed, incubated with anti-CD81, and then imaged again as shown below.







*Membrane was first incubated and imaged with a monoclonal antibody that will not be identified as it is outside the scope of this manuscript.

** Membrane was first incubated and imaged with a polyclonal antibody that will not be identified as it is outside the scope of this manuscript.

