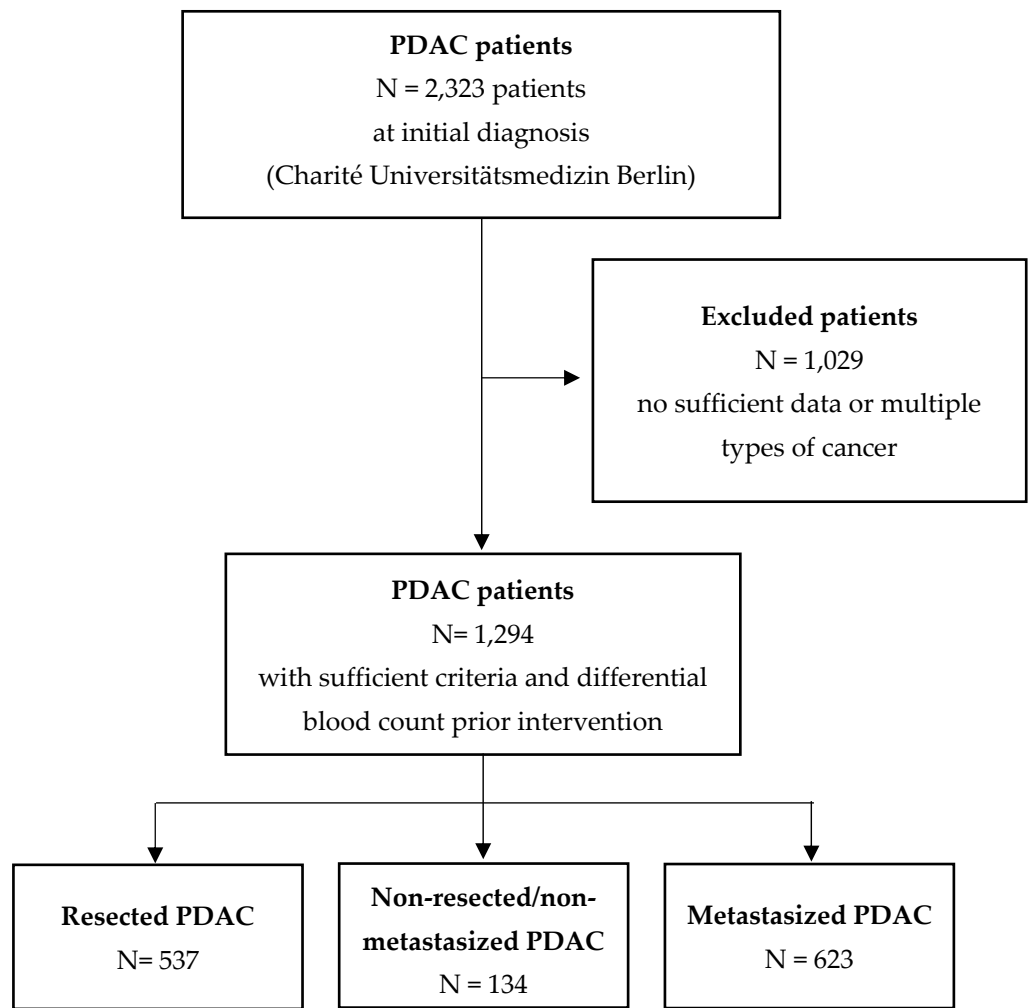


**Supplementary Materials:**

**Figure S1.** Study flow chart.



PDAC – pancreatic adenocarcinoma.

**Table S1.** Descriptive statistics of study cohort with respect to NLR.

<b>Factor</b>	<b>Overall N = 1,294</b>	<b>NLR &lt; 4 N = 581</b>	<b>NLR ≥ 4 N = 713</b>
<b>Age (years)</b>	66 (28– 94)	64 (28 – 87)	69 (34 – 94)
<b>Sex</b>			
Female	576 (44.5)	285 (22.0)	291 (22.5)
Male	718 (55.5)	298 (23.0)	420 (32.5)
<b>ECOG</b>			
≥ 2	192 (14.8)	83 (6.4)	109 (8.4)
< 2	616 (47.6)	296 (22.9)	320 (24.7)
Unknown	486 (37.6)	202 (15.6)	284 (22.0)
<b>Stage</b>			
Resected	537 (41.5)	228 (17.6)	309 (23.9)
Locally advanced	134 (10.5)	76 (6.0)	58 (4.5)
Metastasized	623 (48.0)	277 (21.3)	346 (26.7)
<b>Localization</b>			
Head	675 (52.2)	301 (23.2)	374 (29.0)
Body	125 (9.7)	69 (5.2)	56 (4.5)
Tail	208 (16.1)	85 (6.6)	123 (9.5)
Overlap	63 (4.9)	26 (2.0)	37 (2.9)
Not-specified	223 (17.1)	100 (7.6)	123 (9.5)
<b>Treatment</b>			
Resection			
R0	347 (26.7)	147 (11.2)	200 (15.5)
R1	147 (11.5)	63 (5.0)	84 (6.5)
R2	4 (0.3)	1 (0.1)	3 (0.2)
RX	5 (0.4)	3 (0.2)	2 (0.2)
Unknown	34 (2.6)	28 (2.2)	6 (0.4)
Palliative Treatment	757 (58.5)	339 (26.2)	418 (23.3)

NLR – neutrophile to lymphocyte ratio.

**Table S2.** Descriptive statistics of study cohort with respect to PLR.

<b>Factor</b>	<b>Overall N = 1,294</b>	<b>PLR &lt; 180 N = 590</b>	<b>PLR ≥ 180 N = 704</b>
<b>Age (years)</b>	66 (28– 94)	66 (28 – 87)	68 (34 – 94)
<b>Sex</b>			
Female	576 (44.5)	274 (21.1)	302 (23.3)
Male	718 (55.5)	316 (24.4)	402 (31.2)
<b>ECOG</b>			
≥ 2	192 (14.8)	76 (5.8)	116 (9.0)
< 2	616 (47.6)	294 (22.7)	322 (24.9)
Unknown	486 (37.6)	220 (17.1)	266 (20.5)
<b>Stage</b>			
Resected	537 (41.5)	235 (18.2)	302 (23.3)
Locally advanced	134 (10.5)	66 (5.1)	68 (5.4)
Metastasized	623 (48.0)	289 (22.3)	334 (25.7)
<b>Localization</b>			
Head	675 (52.2)	277 (21.4)	398 (30.8)
Body	125 (9.7)	79 (6.1)	46 (3.6)
Tail	208 (16.1)	100 (7.7)	108 (8.4)
Overlap	63 (4.9)	30 (2.3)	33 (2.5)
Not-specified	223 (17.1)	104 (8.0)	119 (9.1)
<b>Treatment</b>			
Resection			
R0	347 (26.7)	157 (12.1)	190 (14.6)
R1	147 (11.5)	62 (4.8)	85 (6.7)
R2	4 (0.3)	1 (0.1)	3 (0.2)
RX	5 (0.4)	3 (0.2)	2 (0.2)
Unknown	34 (2.6)	28 (2.2)	6 (0.4)
Palliative Treatment	757 (58.5)	339 (26.2)	418 (23.3)

PLR – platelet to lymphocyte ratio.

**Table S3.** Descriptive statistics of study cohort with respect to LMR.

<b>Factor</b>	<b>Overall N = 1,294</b>	<b>LMR &lt; 1.6 N = 491</b>	<b>LMR ≥ 1.6 N = 803</b>
<b>Age (years)</b>	66 (28– 94)	68 (34 – 94)	66 (28 – 87)
<b>Sex</b>			
Female	576 (44.5)	181 (14.0)	394 (30.5)
Male	718 (55.5)	308 (23.8)	410 (31.7)
<b>ECOG</b>			
≥ 2	192 (14.8)	83 (6.4)	109 (8.4)
< 2	616 (47.6)	218 (16.9)	398 (30.7)
Unknown	486 (37.6)	222 (17.1)	264 (20.5)
<b>Stage</b>			
Resected	537 (41.5)	209 (16.1)	328 (25.4)
Locally advanced	134 (10.5)	32 (2.4)	102 (8.0)
Metastasized	623 (48.1)	250 (19.2)	373 (28.9)
<b>Localization</b>			
Head	675 (52.2)	268 (20.7)	407 (31.5)
Body	125 (9.7)	44 (3.4)	81 (6.2)
Tail	208 (16.1)	70 (5.4)	138 (10.7)
Overlap	63 (4.9)	25 (1.9)	38 (3.0)
Not-specified	223 (17.2)	84 (6.5)	139 (10.7)
<b>Treatment</b>			
Resection			
R0	347 (26.7)	129 (9.9)	218 (16.8)
R1	147 (11.5)	61 (4.7)	86 (6.8)
R2	4 (0.3)	2 (0.15)	2 (0.15)
RX	5 (0.4)	1 (0.08)	4 (0.32)
Unknown	34 (2.6)	16 (1.2)	18 (1.4)
Palliative Treatment	757 (58.5)	282 (21.8)	475 (36.7)

LMR – lymphocyte to monocyte ratio.

**Table S4.** Descriptive statistics of study cohort with respect to CAR.

<b>Factor</b>	<b>Overall N = 1,197 <sup>1</sup></b>	<b>CAR &lt; 0.4 N = 561</b>	<b>CAR ≥ 0.4 N = 636</b>
<b>Age (years)</b>	66 (28– 94)	66 (28 – 88)	67 (35 – 94)
<b>Sex</b>			
Female	530 (44.3)	277 (23.1)	253 (21.2)
Male	667 (55.7)	284 (23.7)	383 (32.0)
<b>ECOG</b>			
≥ 2	181 (15.1)	54 (4.5)	127 (12.3)
< 2	568 (47.5)	282 (23.6)	286 (23.9)
Unknown	448 (37.4)	225 (18.8)	223 (18.7)
<b>Stage</b>			
Resected	515 (43.0)	285 (23.8)	230 (19.2)
Locally advanced	123 (10.3)	73 (6.1)	50 (4.2)
Metastasized	559 (46.7)	203 (17.0)	356 (29.8)
<b>Localization</b>			
Head	632 (52.8)	312 (26.1)	320 (26.8)
Body	112 (9.4)	63 (5.3)	49 (4.1)
Tail	192 (16.1)	72 (6.0)	120 (10.0)
Overlap	58 (4.9)	27 (2.3)	31 (2.6)
Not-specified	203 (17.0)	87 (7.3)	116 (9.7)
<b>Treatment</b>			
Resection			
R0	337 (28.1)	189 (15.8)	148 (12.3)
R1	141 (11.8)	78 (6.5)	63 (5.3)
R2	3 (0.3)	2 (0.2)	1 (0.1)
RX	5 (0.4)	3 (0.3)	2 (0.2)
Unknown	29 (2.4)	13 (1.1)	16 (1.3)
Palliative Treatment	682 (57.0)	276 (23.1)	406 (34.0)

CAR – CRP to albumin ratio; CRP – C-reactive protein; <sup>1</sup> in the case of 97 out of 1,294 patients no CRP value was recorded.

**Table S5.** Descriptive statistics of study cohort with respect to IBI.

<b>Factor</b>	<b>Overall N = 1,241<sup>1</sup></b>	<b>IBI &lt; 30 N = 689</b>	<b>IBI ≥ 30 N = 552</b>
<b>Age (years)</b>	66 (28– 94)	67 (35 – 94)	65 (28 – 87)
<b>Sex</b>			
Female	550 (44.3)	282 (22.7)	268 (21.6)
Male	691 (55.7)	407 (32.8)	284 (22.9)
<b>ECOG</b>			
≥ 2	187 (15.1)	130 (10.5)	57 (4.6)
< 2	586 (47.2)	321 (25.9)	265 (21.3)
Unknown	468 (37.7)	238 (19.2)	230 (18.5)
<b>Stage</b>			
Resected	520 (41.9)	239 (19.3)	281 (22.6)
Locally advanced	129 (10.4)	60 (4.8)	69 (5.6)
Metastasized	592 (47.7)	390 (31.4)	202 (16.3)
<b>Localization</b>			
Head	652 (52.5)	338 (27.2)	314 (25.3)
Body	115 (9.3)	54 (4.4)	61 (4.9)
Tail	199 (16.0)	130 (10.5)	69 (5.5)
Overlap	59 (4.8)	31 (2.5)	28 (2.3)
Not-specified	216 (17.4)	136 (10.9)	80 (6.5)
<b>Treatment</b>			
Resection			
R0	291 (23.4)	143 (11.5)	148 (11.9)
R1	135 (10.9)	64 (5.2)	71 (5.7)
R2	2 (0.2)	0 (0.0)	2 (0.2)
RX	13 (1.0)	9 (0.7)	4 (0.3)
Unknown	43 (3.5)	20 (1.6)	23 (1.9)
Palliative Treatment	757 (61.0)	453 (36.5)	304 (24.5)

IBI – Inflammatory Benchmark-Index. <sup>1</sup> in the case of 53 out of 1,294 patients no IBI value was recorded.

**Table S6.** Different combined scores using inflammation-based parameters.

Score	Ratios
IBI	$\frac{L + M + N + P}{CRP}$
A	$L + M + N + P$
B	$\frac{L + M + N}{P}$
C	$\frac{L + N + P}{M}$
D	$\frac{L + M + P}{N}$
E	$\frac{M + N + P}{L}$
F	$\frac{L + M}{N + P}$
G	$\frac{L + N}{M + P}$
H	$\frac{L + P}{M + N}$
I	$L + M + N$
J	$\frac{L + M}{N}$
K	$\frac{L + N}{M}$
L	$\frac{M + N}{L}$
M	$L + M + P$
N	$\frac{L + M}{P}$
O	$\frac{L + P}{N}$
P	$\frac{M + P}{N}$
Q	$L + N + P$
R	$\frac{L + N}{P}$
S	$\frac{L + P}{N}$
T	$\frac{N + P}{L}$
U	$M + N + P$
V	$\frac{M + N}{P}$
W	$\frac{M + P}{N}$
X	$\frac{N + P}{M}$

IBI – Inflammation-Benchmark-Index; L – Lymphocytes (/nl); M – Monocytes (/nl); N – neutrophils (/nl); P – Platelets (/nl); CRP – C-reactive protein (mg/dl).

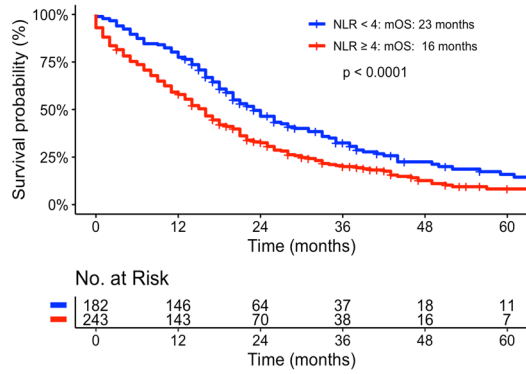
**Table S7.** Univariate and multivariate logistic regression analyses of combined scores.

Score	Cut-off	mOS	mOS	Univariate analysis			Multivariate analysis		
		(months) < Cut-off	(months) ≥ Cut-off	HR	95% CI	P-value	HR	95% CI	P-value
<b>IBI</b>	30	7	16	0.6	0.5 – 0.65	< 0.001	0.7	0.6 – 0.8	< 0.001
<b>A</b>	226	9	11	0.9	0.8 – 1.1	0.213	0.9	0.8 – 1.1	0.774
<b>B</b>	0.04	12	8	1.3	1.1 – 1.5	< 0.001	1.5	1.3 – 1.8	< 0.001
<b>C</b>	469	9	14	0.9	0.7 – 0.9	< 0.001	0.8	0.7 – 0.9	0.01
<b>D</b>	40	7	13	1.3	0.7 – 2.4	0.419	1.3	0.6 – 2.5	0.529
<b>E</b>	190	12	9	1.3	1.1 – 1.4	< 0.001	1.2	1.0 – 1.4	0.003
<b>F</b>	0.015	10	7	1.2	1.0 – 1.5	0.058	1.2	1.0 – 1.6	0.072
<b>G</b>	0.04	12	8	1.3	1.1 – 1.5	< 0.001	1.5	1.3 – 1.8	< 0.001
<b>H</b>	36	8	13	0.7	0.6 – 0.8	< 0.001	0.7	0.5 – 0.8	< 0.001
<b>I</b>	9	11	8	1.3	1.1 – 1.4	< 0.001	1.4	1.2 – 1.6	< 0.001
<b>J</b>	0.4	8	14	0.7	0.6 – 0.8	< 0.001	0.7	0.6 – 0.8	< 0.001
<b>K</b>	14	10	10	1.0	0.9 – 1.2	0.602	1.2	1.0 – 1.4	0.058
<b>L</b>	5	14	18	1.4	1.3 – 1.6	< 0.001	1.4	1.2 – 1.6	< 0.001
<b>M</b>	238	9	11	0.9	0.8 – 1.1	0.278	1.0	0.8 – 1.1	0.501
<b>N</b>	0.015	10	7	1.2	1 – 1.5	0.077	1.1	0.8 – 1.8	0.460
<b>O</b>	39	7	13	0.71	0.6 – 0.8	< 0.001	0.6	0.5 – 0.7	< 0.001
<b>P</b>	45	8	13	0.72	0.6 – 0.8	< 0.001	0.7	0.6 – 0.8	< 0.001
<b>Q</b>	244	9	11	0.94	0.8 – 1.1	0.336	1.0	0.8 – 1.1	0.719
<b>R</b>	0.035	12	8	1.3	1.1 – 1.5	< 0.001	1.4	1.2 – 1.7	< 0.001
<b>S</b>	39	7	13	0.7	0.6 – 0.8	< 0.001	0.6	0.5 – 0.7	< 0.001
<b>T</b>	189	12	9	1.2	1.1 – 1.4	< 0.001	1.2	1.1 – 1.4	< 0.001
<b>U</b>	224	9	11	0.9	0.8 – 1.1	0.273	1.0	0.8 – 1.1	0.862
<b>V</b>	0.025	13	8	1.3	1.2 – 1.5	< 0.001	1.4	1.2 – 1.6	< 0.001
<b>W</b>	45	8	13	0.7	0.6 – 0.8	< 0.001	0.7	0.6 – 0.8	< 0.001
<b>X</b>	464	9	14	0.8	0.7 – 0.9	< 0.001	0.8	0.7 – 0.9	< 0.001

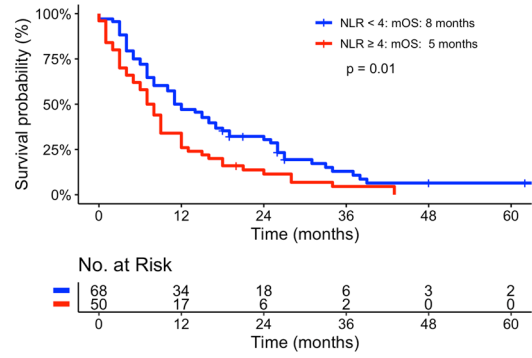
IBI – Inflammation-Benchmark-Index; mOS – median Overall Survival.



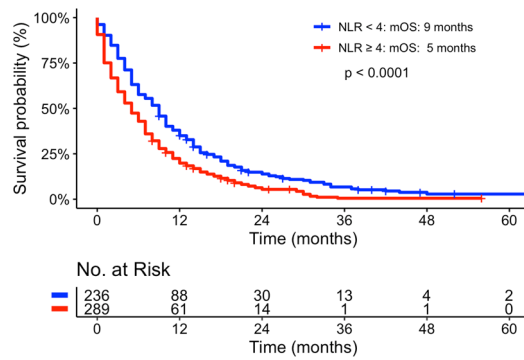
**Figure S2.** Kaplan-Meier Curves univariate comparison of sub-group analyses of NLR: (a) resected patients; (b) locally advanced; (c) metastasized patients.



(a)



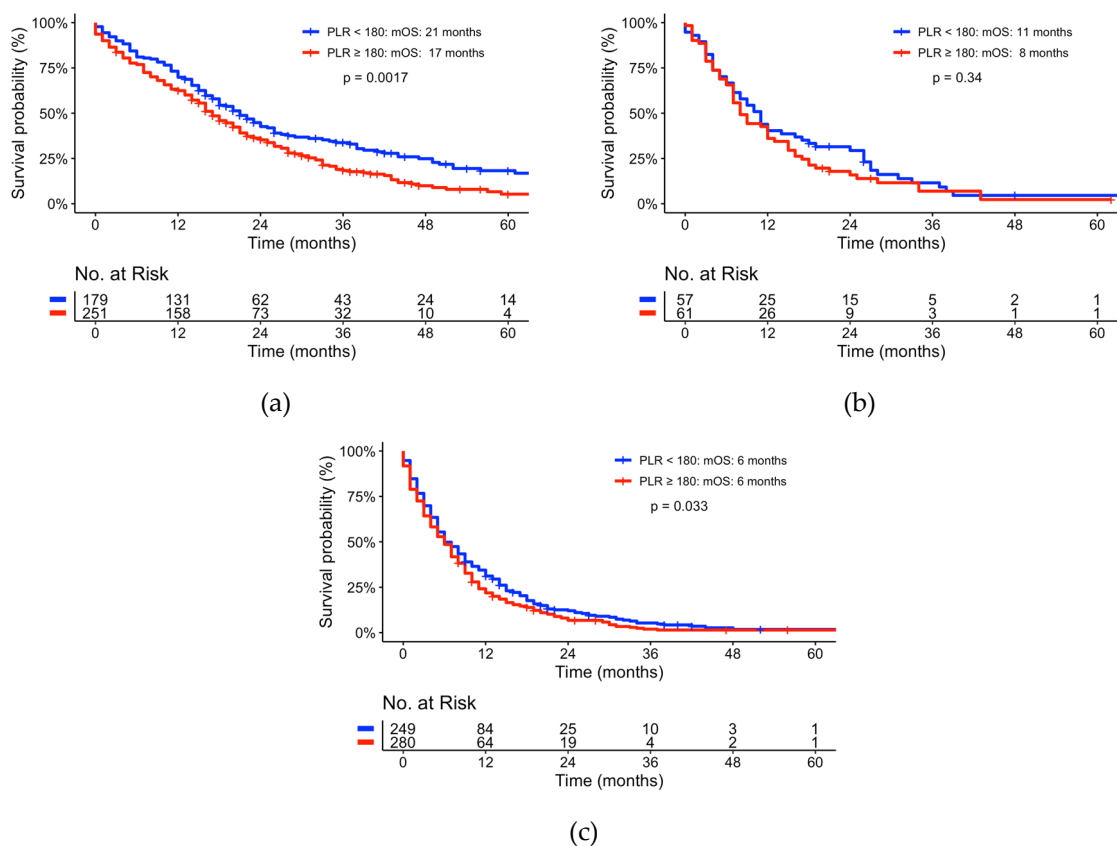
(b)



(c)

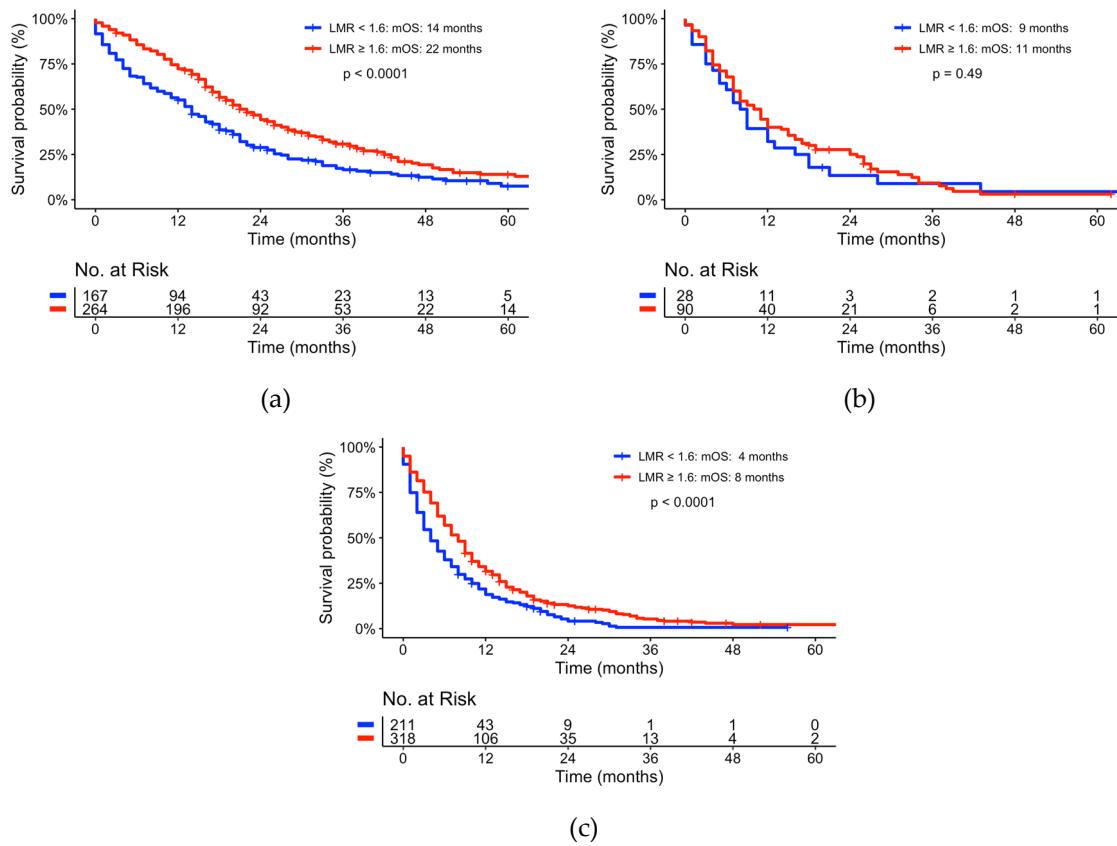
NLR - neutrophil to lymphocyte ratio.

**Figure S3.** Kaplan-Meyer Curves univariate comparison of sub-group analyses of PLR: (a) resected patients; (b) locally advanced; (c) metastasized patients.



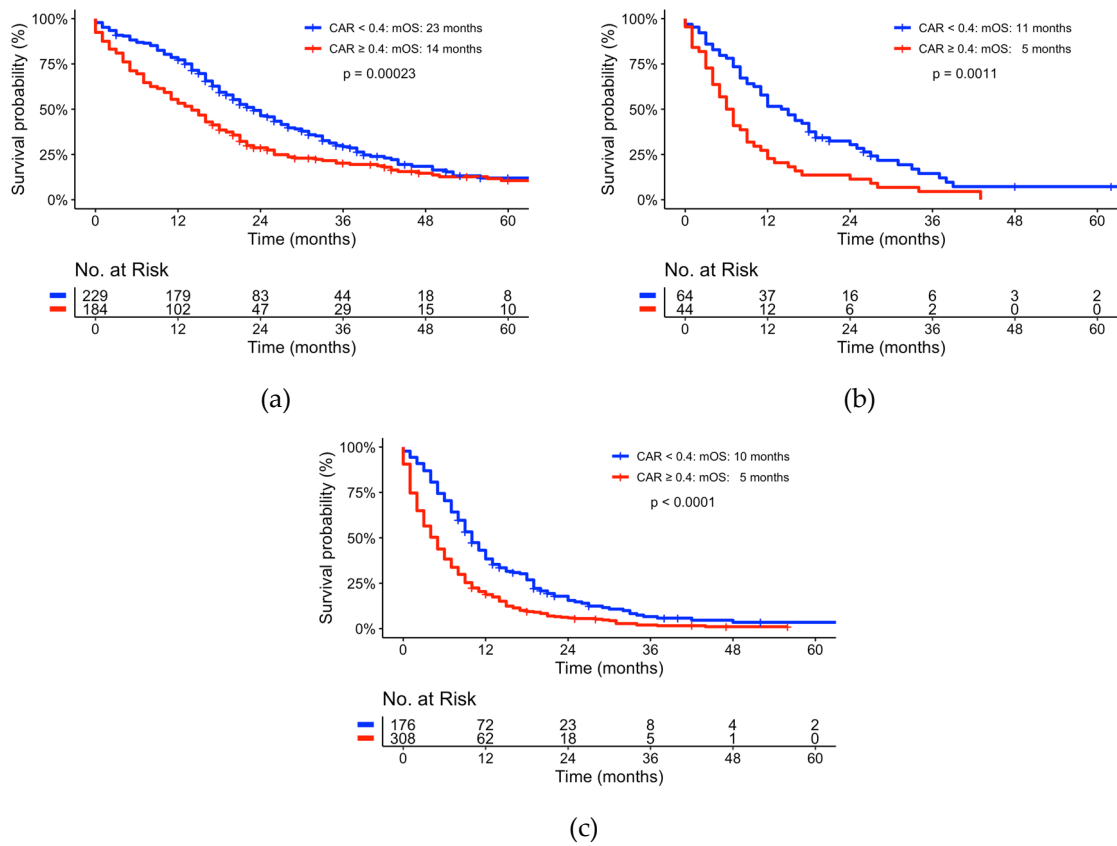
PLR - platelet to lymphocyte ratio.

**Figure S4.** Kaplan-Meier Curves univariate comparison of sub-group analyses of LMR: (a) resected patients; (b) locally advanced; (c) metastasized patients.



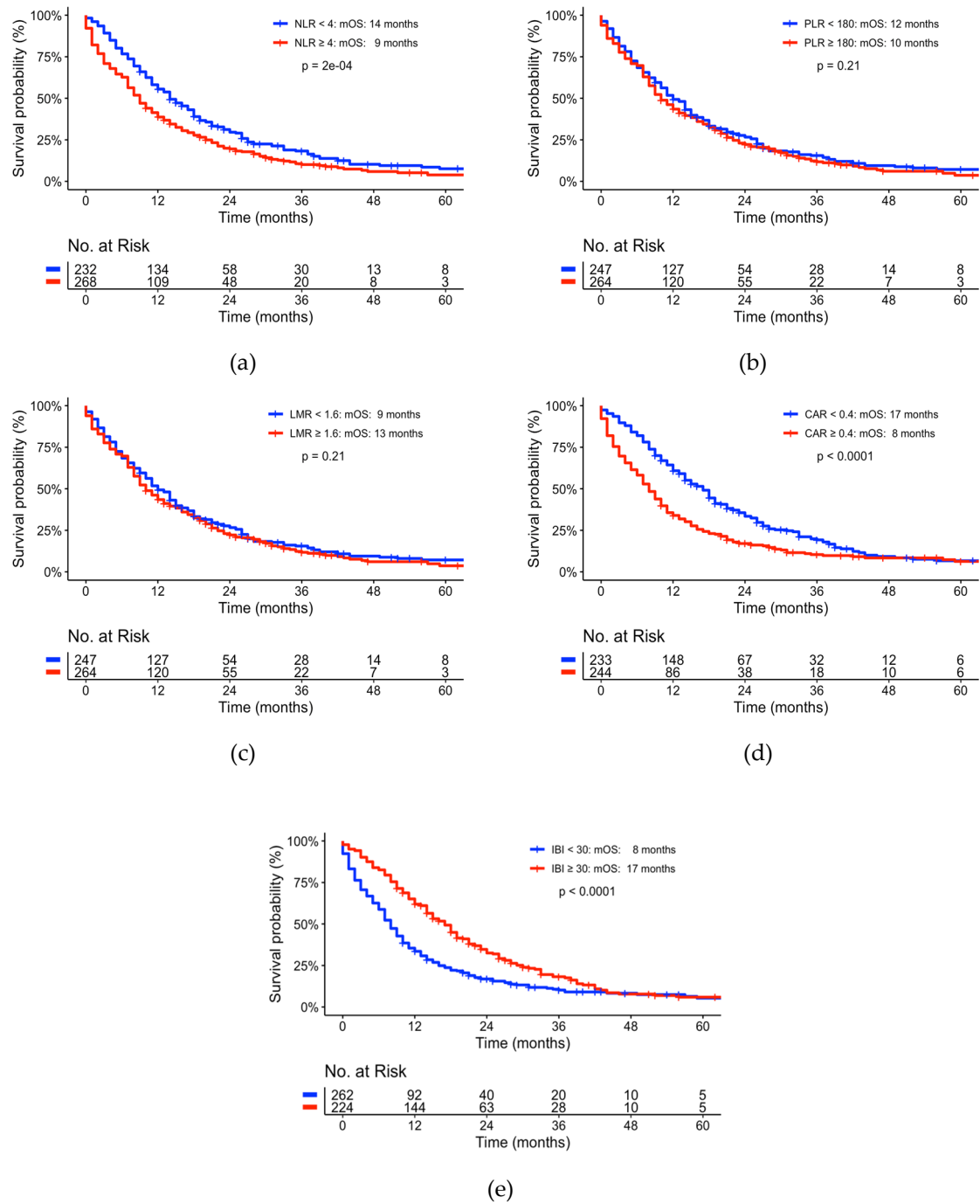
LMR - lymphocyte to monocyte ratio.

**Figure S5.** Kaplan-Meier Curves univariate comparison of sub-group analyses of CAR: (a) resected patients; (b) locally advanced; (c) metastasized patients.



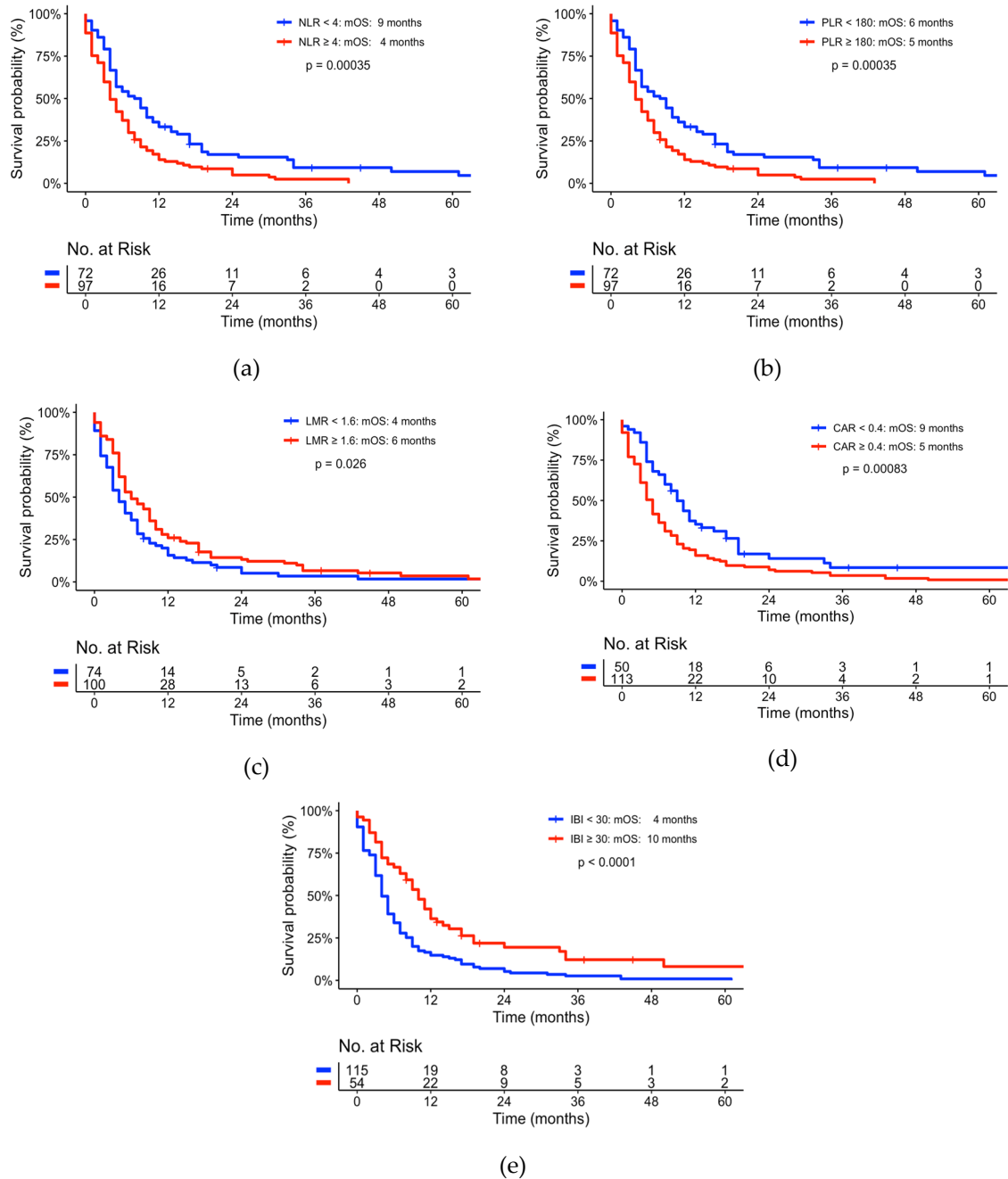
CAR - CRP to albumin ratio; CRP – C-reactive protein.

**Figure S6.** Kaplan-Meyer Curves univariate comparison of sub-group analyses for ECOG status 0-1 of: (a) NLR; (b) LMR; (c) PLR; (d) CAR; (e) IBI.



NLR - neutrophile to lymphocyte ratio; PLR - platelet to lymphocyte ratio; LMR - lymphocyte to monocyte ratio; CAR - CRP to albumin ratio; CRP – C-reactive protein; IBI – Inflammatory Benchmark-Index.

**Figure S7.** Kaplan-Meyer Curves univariate comparison of sub-group analyses for ECOG status >2 of: (a) NLR; (b) LMR; (c) PLR; (d) CAR; (e) IBI.



NLR - neutrophile to lymphocyte ratio; PLR - platelet to lymphocyte ratio;  
 LMR - lymphocyte to monocyte ratio; CAR - CRP to albumin ratio; CRP – C-reactive protein; IBI – Inflammatory Benchmark-Index.