

# S1

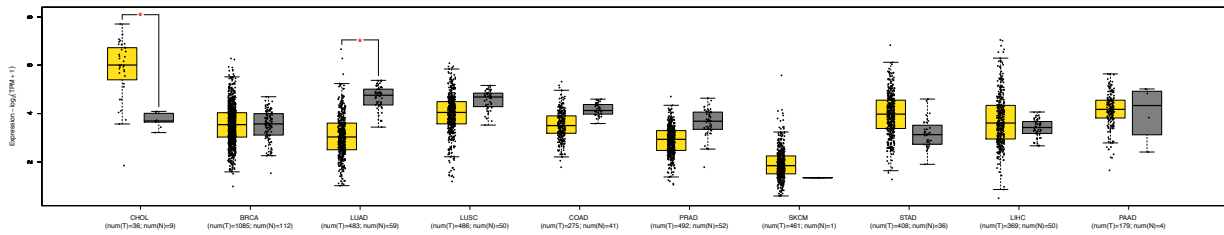


Figure S1. Box plot shows the mRNA expression level of FGFR1-4 in TCGA database for major cancer types. Graphs were plotted using online tool, GEPIA2 (<http://gepia2.cancer-pku.cn>).

CHOL = cholangiocarcinoma

BRCA = breast cancer

LUAD = Lung adenocarcinoma

LUSC = Lung squamous cell carcinoma

COAD = Colon adenocarcinoma

PRAD = Prostate adenocarcinoma

SKCM = Skin Cutaneous Melanoma

STAD = Stomach adenocarcinoma

LIHC = Liver hepatocellular carcinoma

PAAD = Pancreatic adenocarcinoma

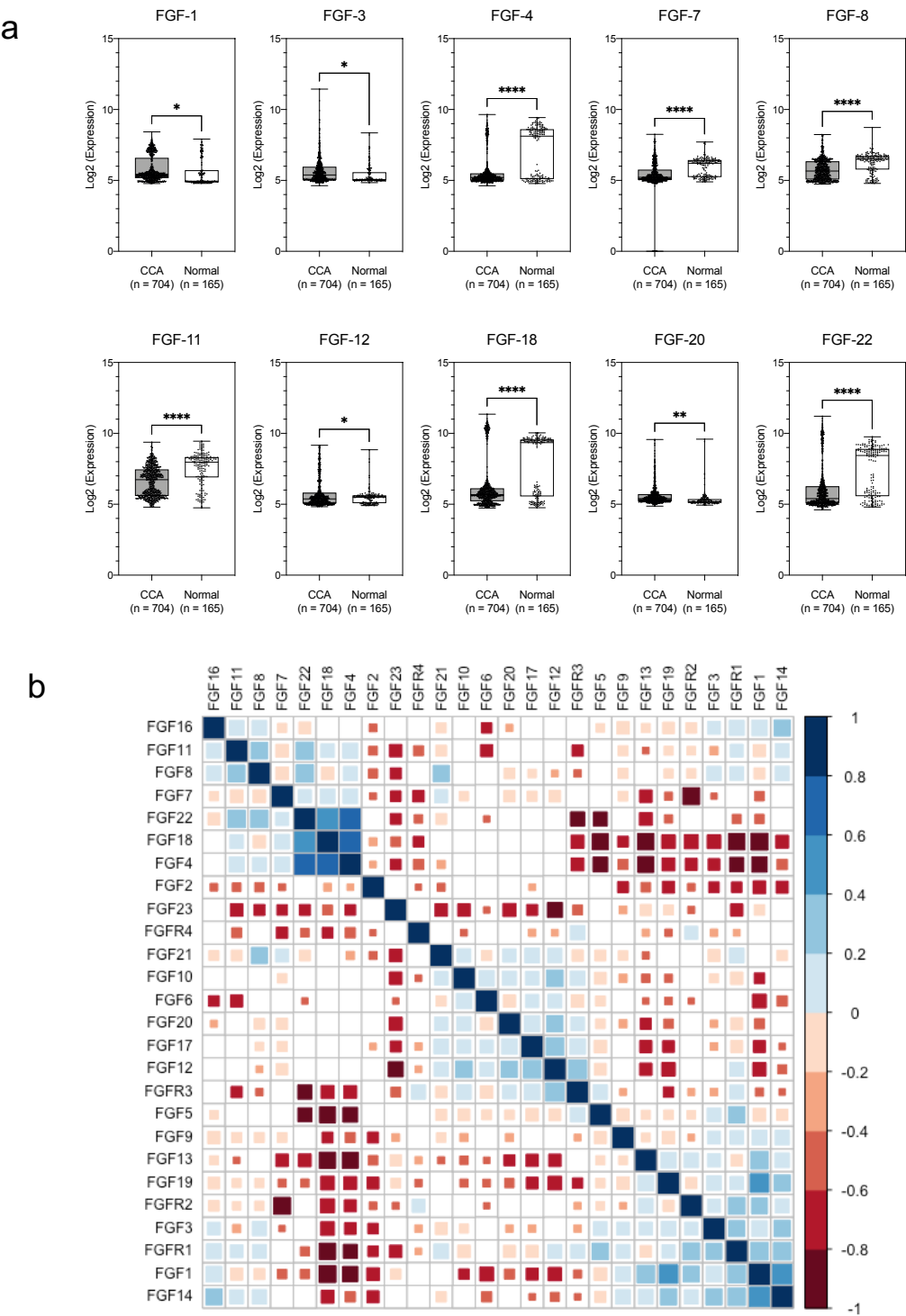


Figure S2: Expression and correlation of FGF ligands and receptor family in CCA

A) Boxplot histograms represent the comparative gene expression of FGF-1, FGF-3, FGF-4, FGF-7, FGF-8, FGF-11, FGF-12, FGF-18, FGF-20 and FGF-22.

B) A correlation matrix of FGF ligands and receptors subfamilies. Pearson correlation coefficients ( $r$ ) were calculated for pairs and plotted using the *corrplot* package in R. The matrix was reordered based on hierarchical clustering using the complete linkage method. Stronger correlations are represented by darker colours and larger squares. Significant enrichments are depicted in red and depletions in blue. Colour indicates correlation (blue, positive correlation ( $r = +1$ ); red, negative correlation ( $r = -1$ ). The legend on the right side of the correlogram shows the Pearson correlation coefficients with their corresponding colours.

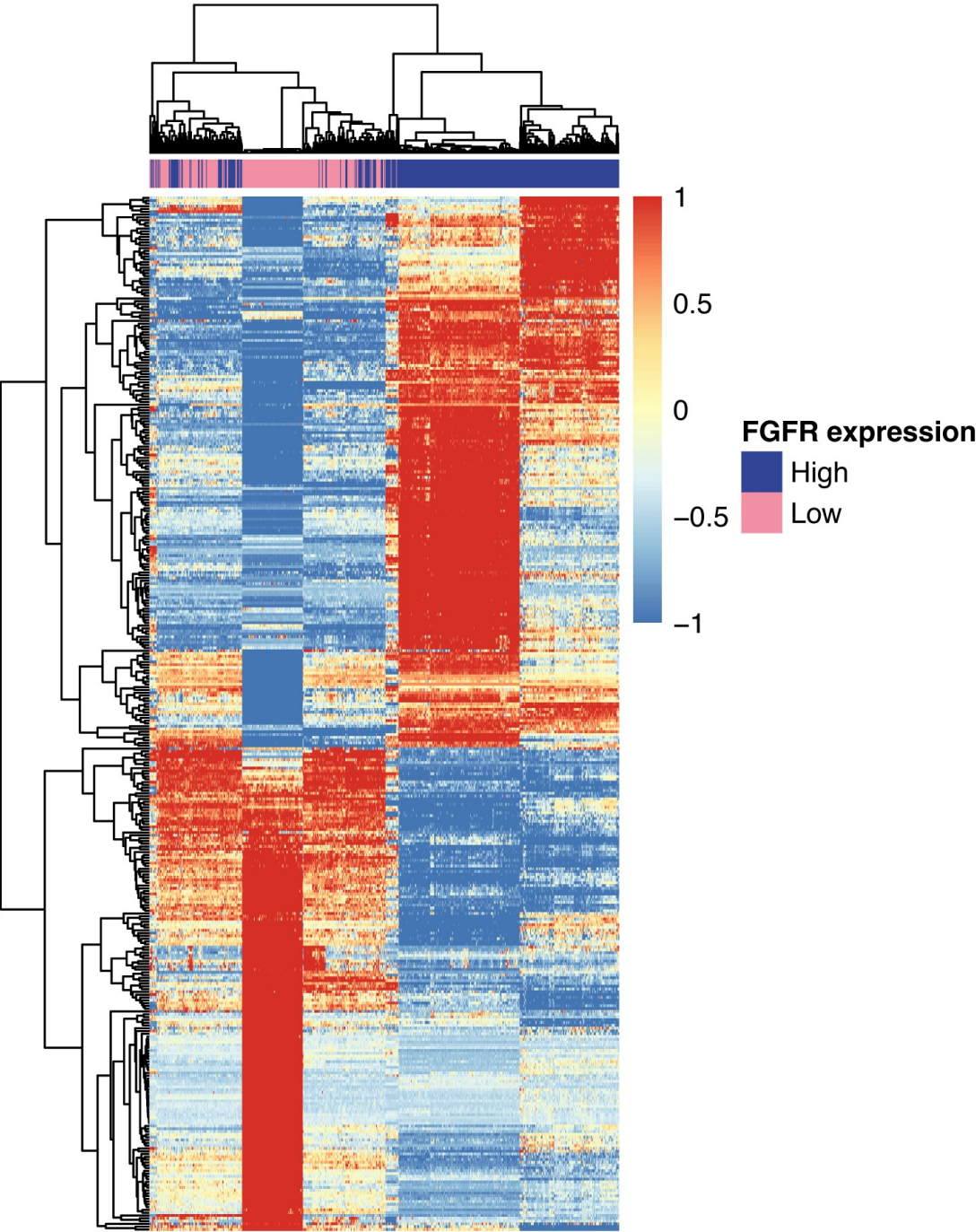


Figure S3. Heatmap depicts the differentially expression genes (DEGs) from comparing high and low FGFR expression groups. Heatmap was constructed using pheatmap package using R. 4.0

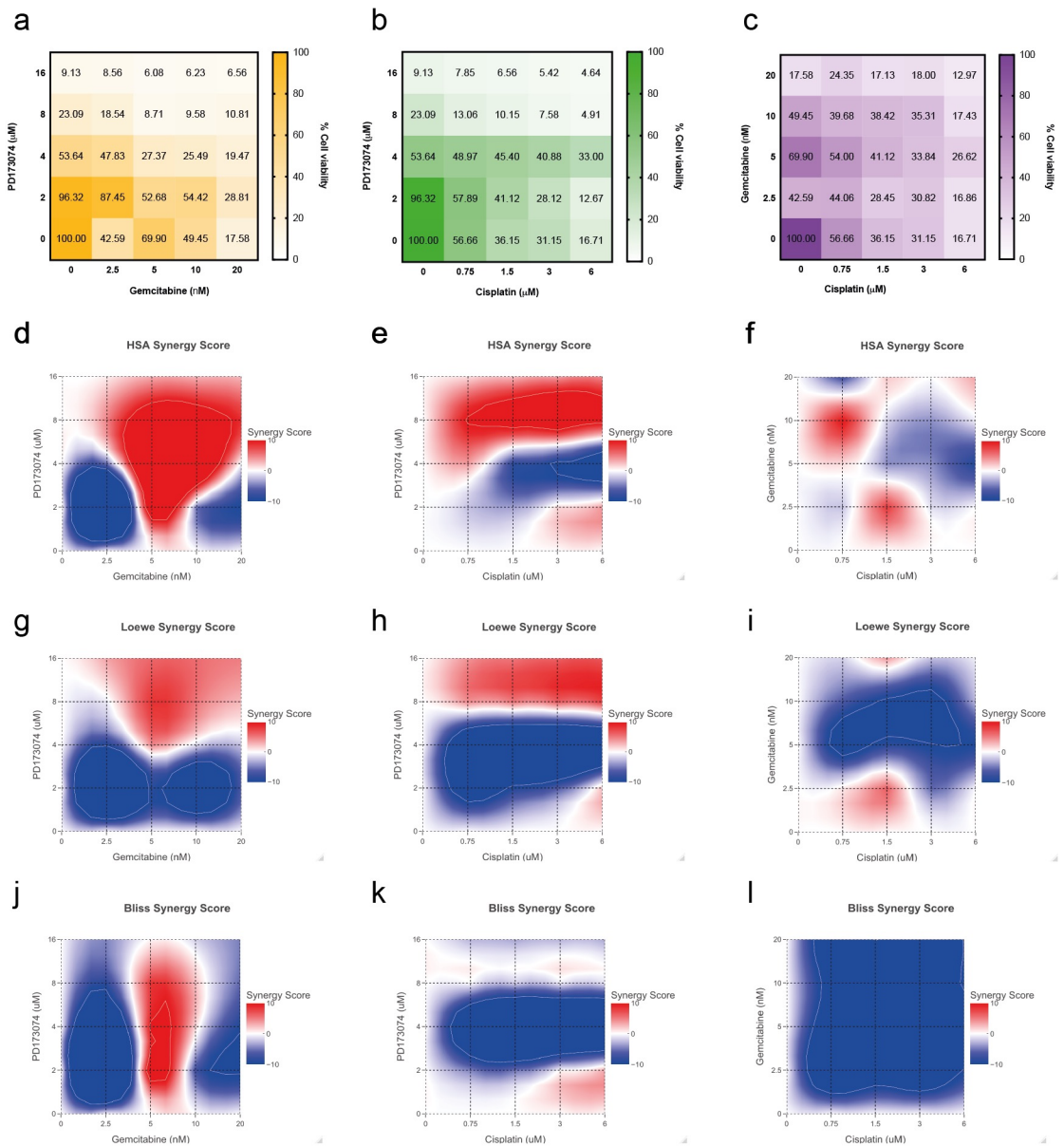


Figure S4. Combination treatment with PD173074 and erlotinib is synergistic in CCA cell line, KKU-213. The dose-response matrix shows percentage cell survival in combination amongst. A) PD173074 and Gemcitabine, B) PD173074 and Cisplatin and C) Gemcitabine and Cisplatin. Synergy scores were calculated according to d,e,f) HSAmodel, g,h,i) Loewe's additivity mathematical model and j,k,l) Bliss Independence model using the R package SynergyFinder.

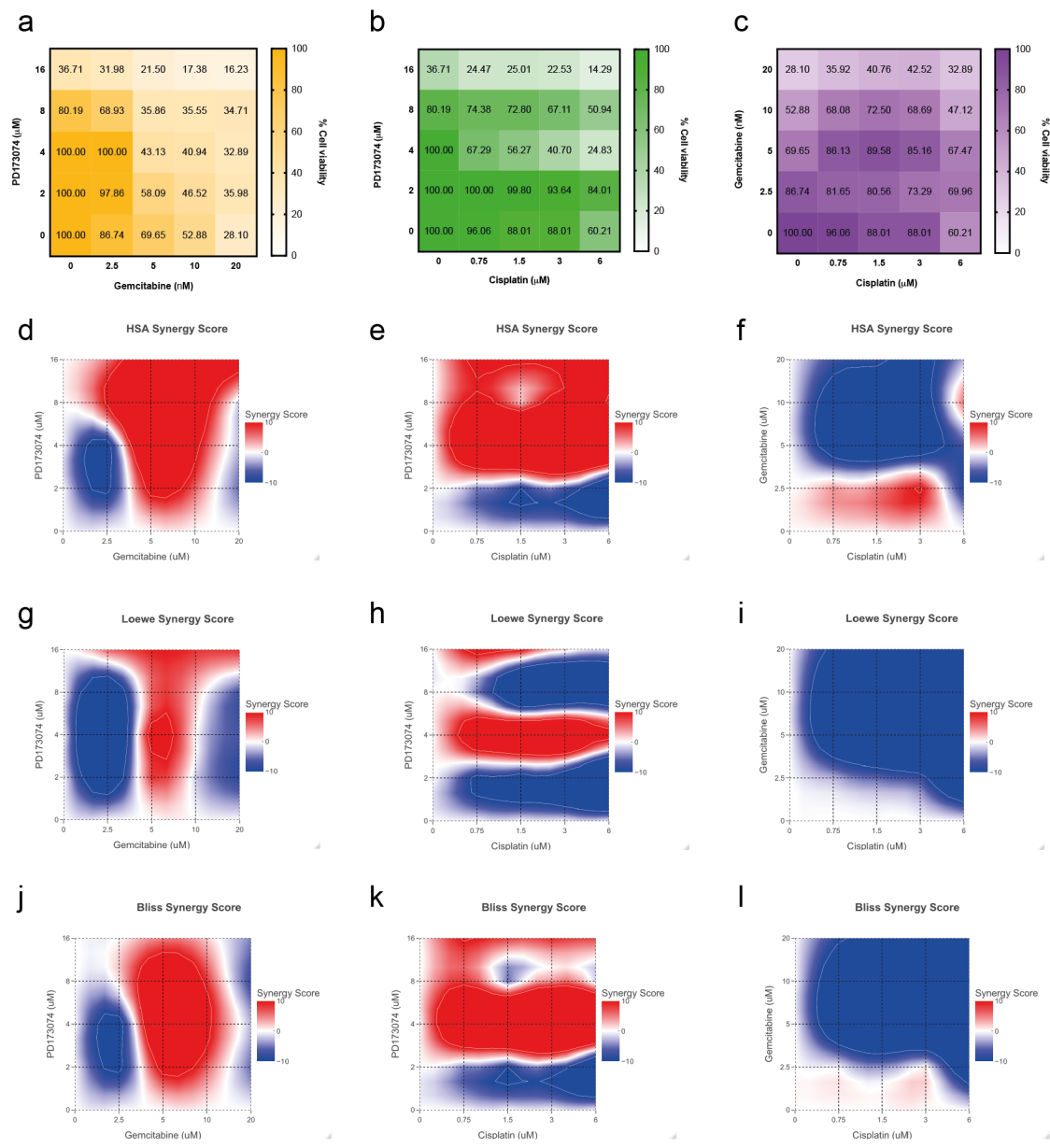


Figure S4. Combination treatment with PD173074 and erlotinib is synergistic in CCA cell line, RBE. The dose-response matrix shows percentage cell survival in combination amongst. A) PD173074 and Gemcitabine, B) PD173074 and Cisplatin and C) Gemcitabine and Cisplatin. Synergy scores were calculated according to d,e,f) HSAmodel, g,h,i) Loewe's additivity mathematical model and j,k,l) Bliss Independence model using the R package SynergyFinder.

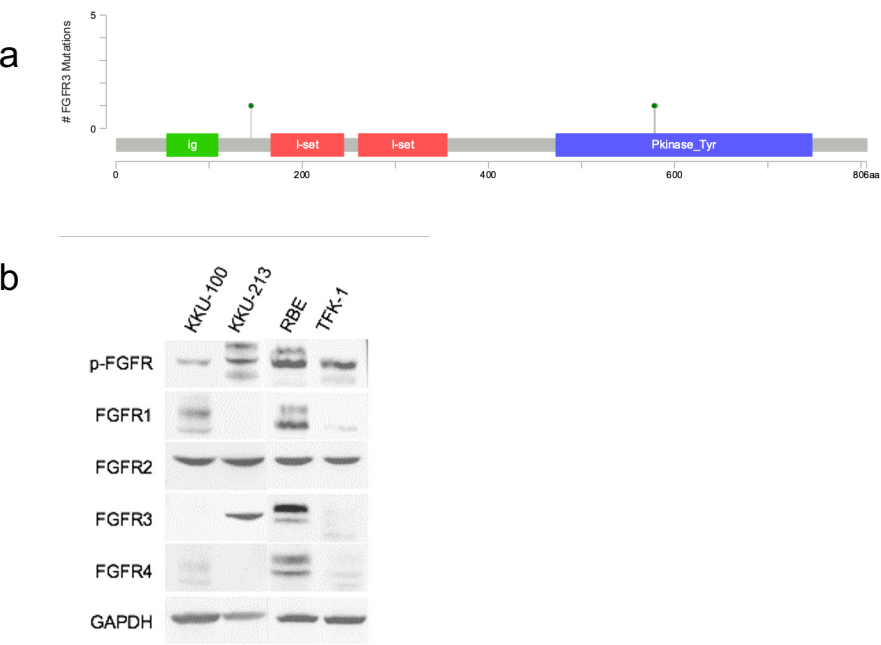


Figure S6. Mutation and Protein expression of FGFRs in CCA cell lines  
A) Mutation plot showing the two different FGFR mutations present in CCA cell lines in this investigation. No other mutations or fusions in FGFR were observed in these cell lines.  
B) Base-line FGFR expression in different cell lines investigated.

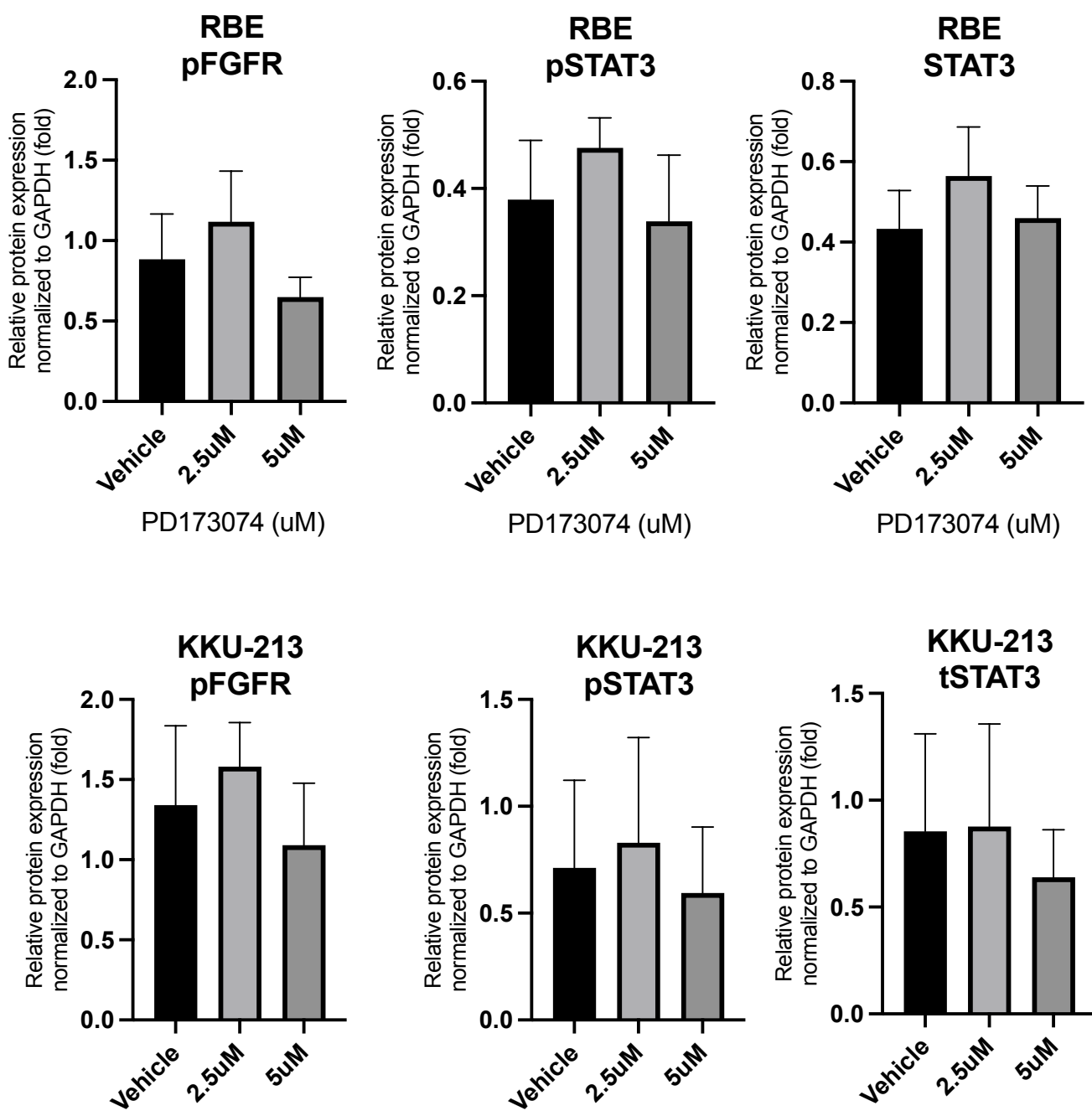


Figure S7. Relative protein expression of p-FGFR, p-STAT3 and STAT to GAPDH in RBE and KKKU-213 cells following 24h treatment with PD173074