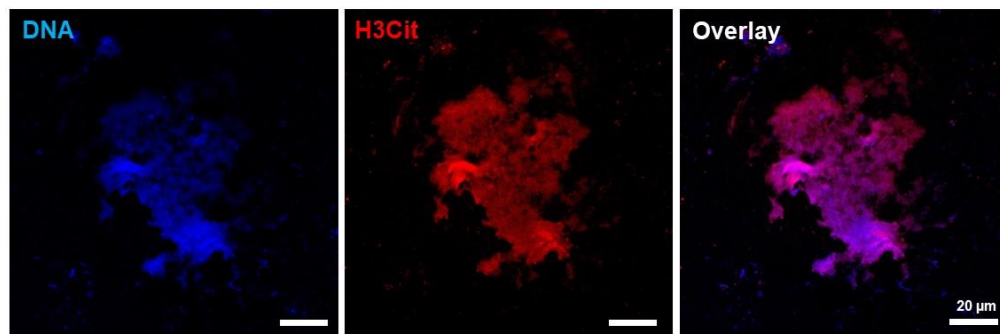


## Supplementary Materials

**Supplementary Table S1.** qPCR primer sequences.

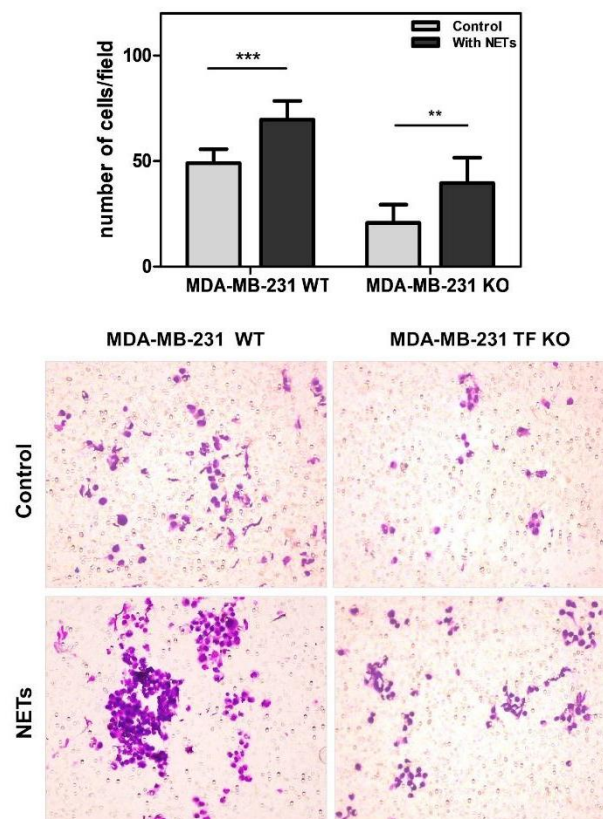
Primer name	Forward primer (5'–3')	Reverse primer (5'–3')	Size bp
GAPDH	5'- TGCACCACCAACTGCTTAGG -3'	5'- GGCATGGACTGTGGTCATGAG -3'	87
IL1B	5'- GGACAGGATATGGAGCAACAA -3'	5'- TCTTTCAACACGCAGGACAG -3'	128
IL6	5'- TACCCCAAGGAGAAGATTCC - 3'	5'- TTTTCTGCCAGTGCCTCTTT -3'	174
CXCL8	5'- CTGGACCCCAAGGAAACTG -3'	5'- GAATTCTCAGCCCTCTCAAAAAC -3'	65
MMP9	5'- GCAATGCTGATGGGAAACCC -3'	5'- AGAAGCCGAAGAGCTTGTCC -3'	144
ZEB1	5'- TGGAATGTATGCTTGTGATTTGTG -3'	5'- GAATAAGACCCAGAGTGTGAGAAG -3	225
CD44	5'- GGAGCAGCACTTCAGGAGGTTAC -3'	5'- GGAATGTGTCTTGGTCTCTGGTAGC -3'	129
PTGS2	5'- TGGTGCCTGGTCTGATGATG -3'	5'- GCCTGCTTGTCTGGAACAAC -3'	120

**Supplementary Figure S1.**



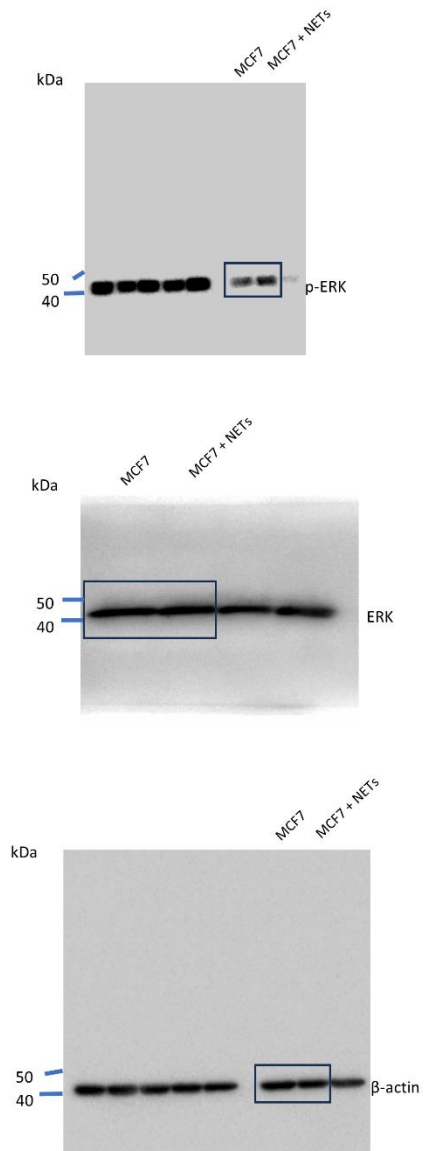
**Supplementary Figure S1.** Characterization of isolated NETs with DAPI and immunostaining with anti-citrullinated Histone 3. Isolated NETs were submitted to DNA staining with DAPI which correlates with citrullinated Histone 3 staining employing a rabbit polyclonal anti-histone H3 (citrulline R2 + R8 + R17) (ab5103, Abcam, MA, USA).

Supplementary Figure S2.



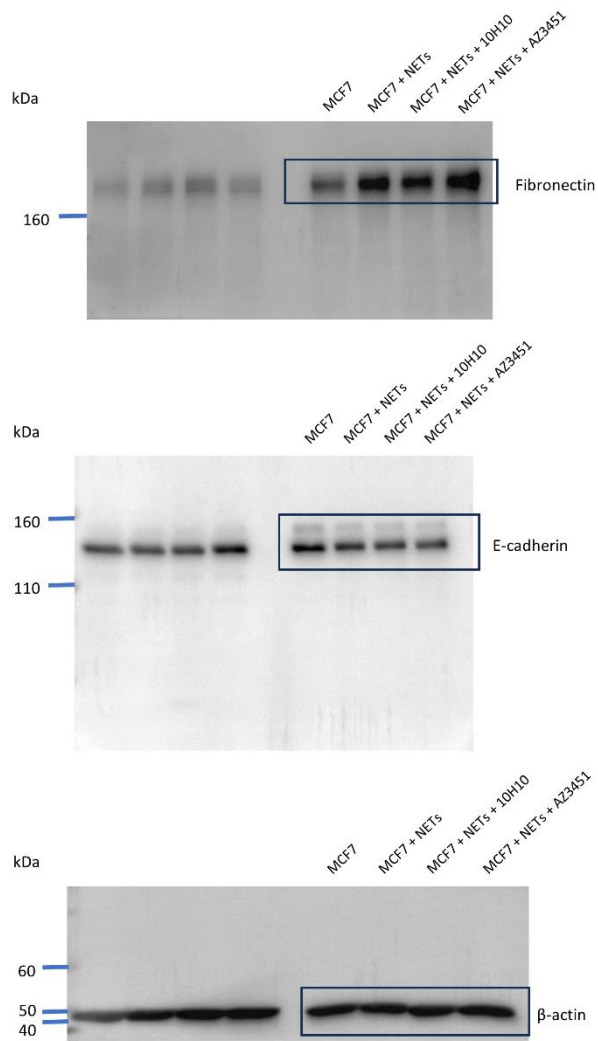
**Supplementary Figure S2. NETs trigger TF-independent migratory capacity.** Migration assays were performed as described by Martins-Cardoso et al. (37). MDA-MB-231 cells TF knockout (KO) or empty vector (WT) were treated with NETs (500 ng/mL) for 24 h.  $5 \times 10^4$  cells were seeded in the upper well. DMEM medium supplemented with 2% FBS was used as a chemoattractant. After 6 hours of incubation, an 8  $\mu$ m pore membrane was stained, and 10 fields per condition were photographed and counted. Values represent the mean  $\pm$  standard deviation of three independent experiments, \*\* *p*-value < 0.01, \*\*\* *p*-value < 0.001, and *ns* = no significance (unpaired t-test).

**Supplementary Figure S3.**



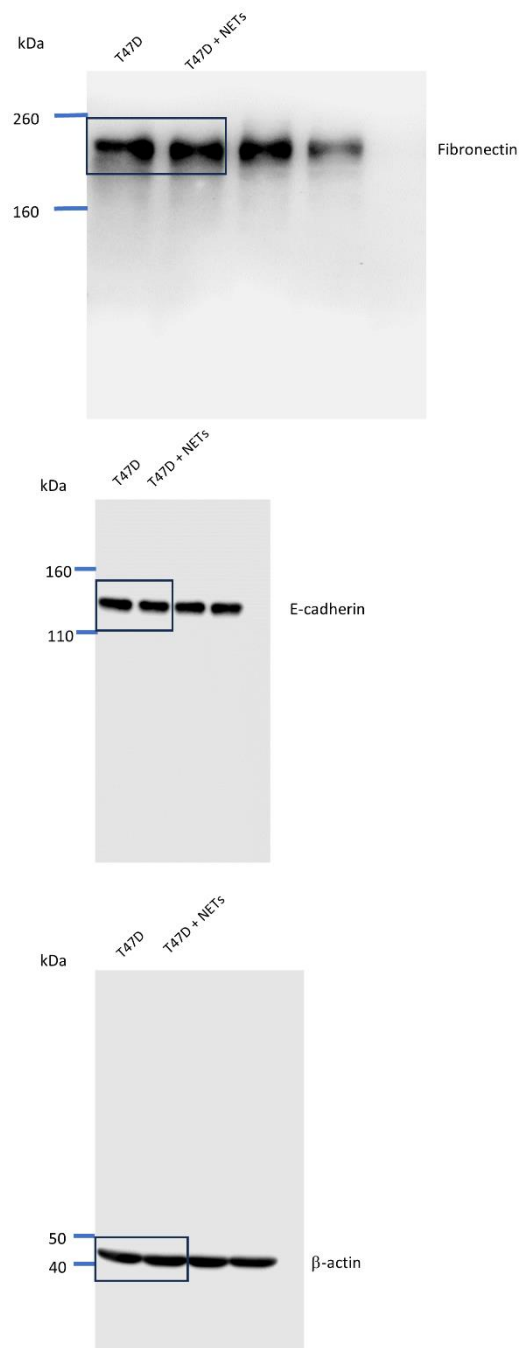
**Supplementary Figure S3.** Uncropped blots of Figure 3A; pERK/ERK staining represented in Figure 3.

**Supplementary Figure S4.**



**Supplementary Figure S4.** Uncropped blots of Figure 7; Fibronectin and E-cadherin staining for MCF7 cells.

**Supplementary Figure S5.**



**Supplementary Figure S5.** Uncropped blots of Figure 7; Fibronectin and E-cadherin staining for T-47D cells