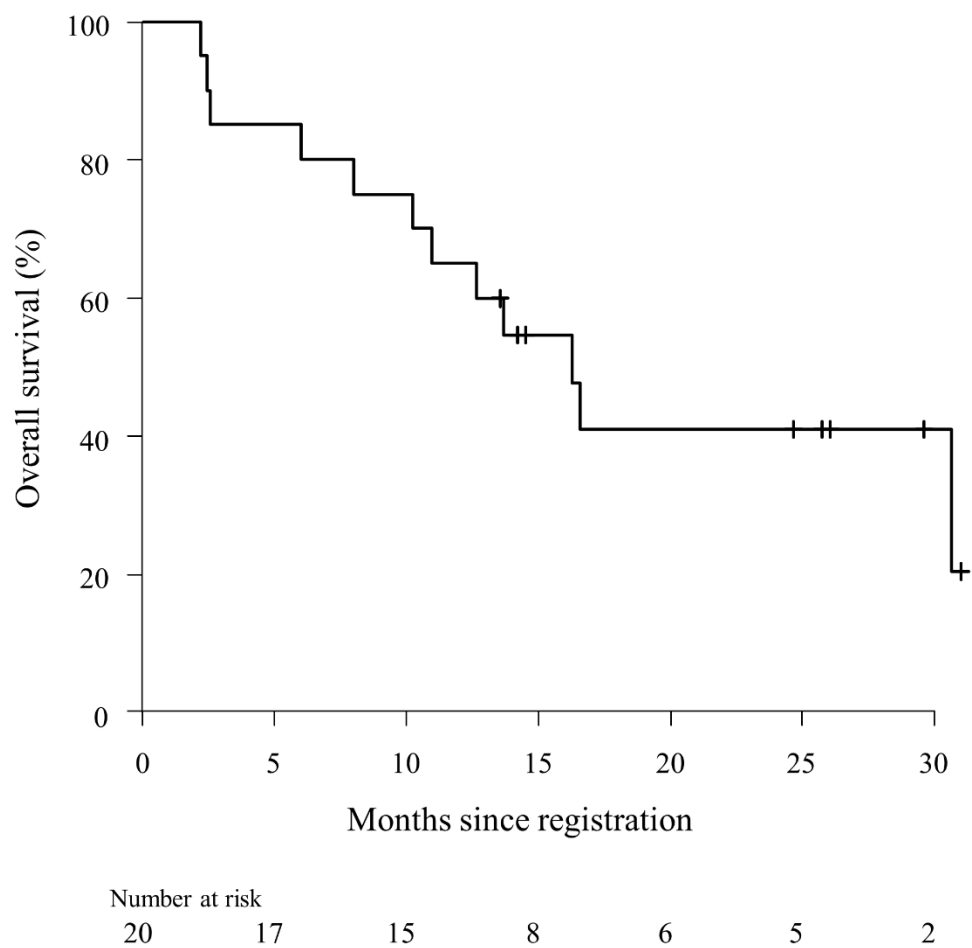


Table S1. Prescribed dose and dose constraints.

Organs (PRVs)	Dose per five fractions
PTV	$D_{95\%} \leq 30.0 \text{ Gy}$ (100% PD) and $D_{2\%} \leq 48.0 \text{ Gy}$ (160% PD)
Brain	$D_{0.035 \text{ cc}} \leq 30.0 \text{ Gy}$
Brain stem (+1.5-mm margin)	$D_{0.035 \text{ cc}} \leq 15.5 \text{ Gy}$
Spinal cord (+1.5-mm margin)	$D_{0.035 \text{ cc}} \leq 15.5 \text{ Gy}$
Cauda equina (thecal sac)	$D_{0.035 \text{ cc}} \leq 15.5 \text{ Gy}$
Brachial or lumbosacral plexuses	$D_{0.035 \text{ cc}} \leq 30.0 \text{ Gy}$
Pharynx	$D_{0.035 \text{ cc}} \leq 29.0 \text{ Gy}$
Trachea/Bronchi	$D_{0.035 \text{ cc}} \leq 29.0 \text{ Gy}$
Esophagus	$D_{2.5 \text{ cc}} \leq 25.0 \text{ Gy}$ and $D_{0.035 \text{ cc}} \leq 29.0 \text{ Gy}$
Heart	$D_{15 \text{ cc}} < 20.0 \text{ Gy}$
Kidney (bilateral)	$D_{200 \text{ cc}} < 11.0 \text{ Gy}$
Stomach, small intestine, and colon (bowel bag)	$D_{0.035 \text{ cc}} \leq 29.0 \text{ Gy}$
Skin (thickness of 3 mm)	$D_{1 \text{ cc}} \leq 29.0 \text{ Gy}$

$D_{X\%/Y \text{ cc}}$ Dose irradiated to the X%/Y cc, PD Prescribed dose, PRV Planning organ-at-risk volume, PTV Planning target volume

Figure S1. Kaplan–Meier curve of overall survival after registration



The 12-month survival rate and median survival are 65% and 16.3 months, respectively.