

## SUPPLEMENTARY MATERIALS

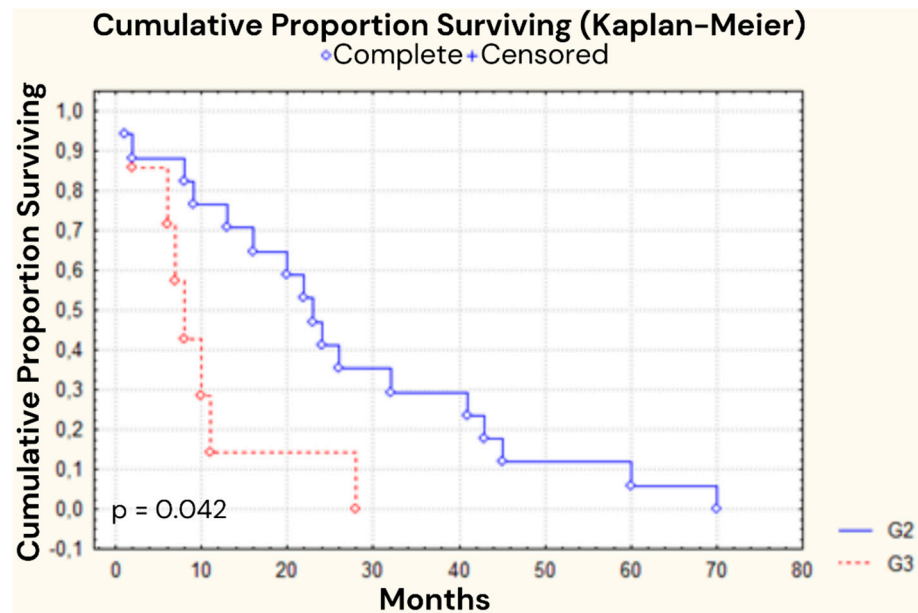


Figure S1. The survival analysis of patients with colon adenocarcinoma at various tumor grades. The Kaplan-Meier test was used to perform the survival analysis. p: statistical significance; G: grade.

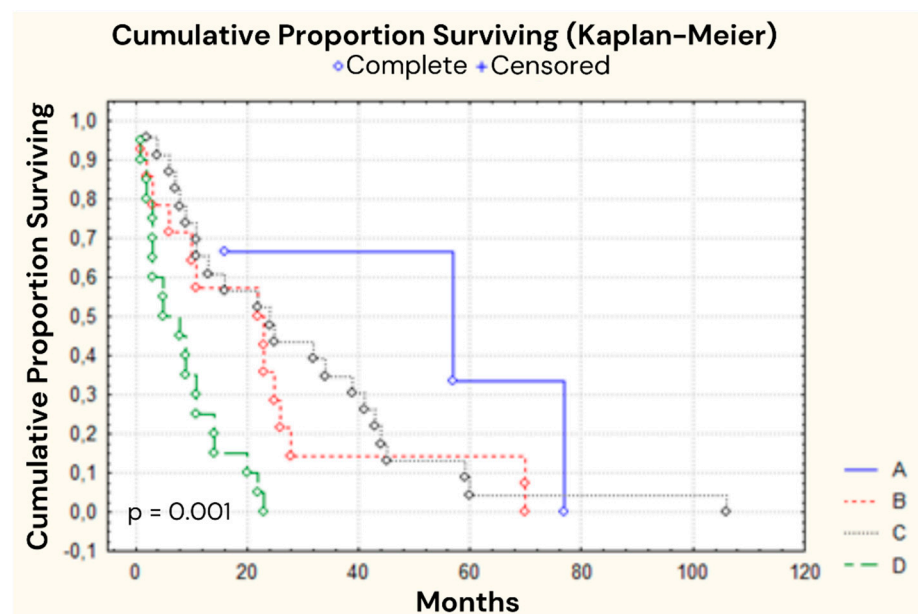
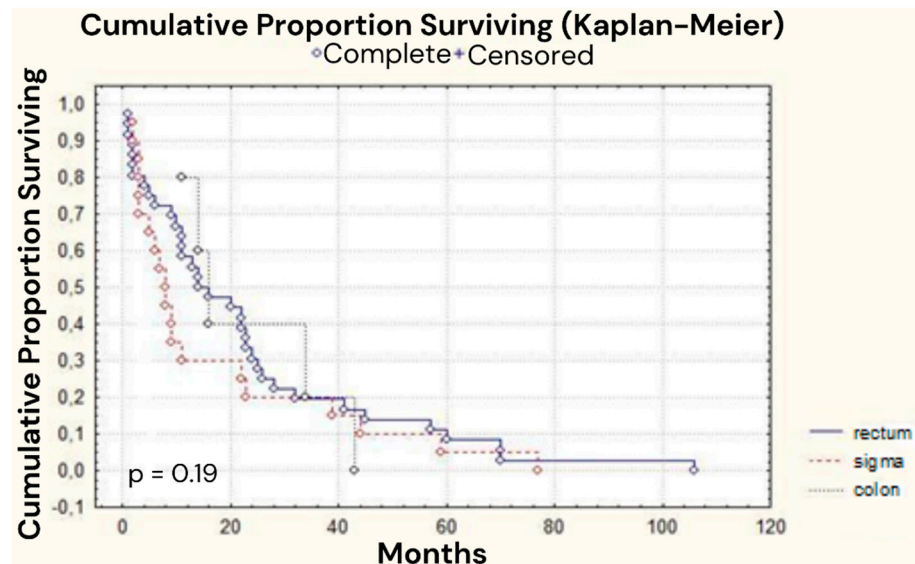
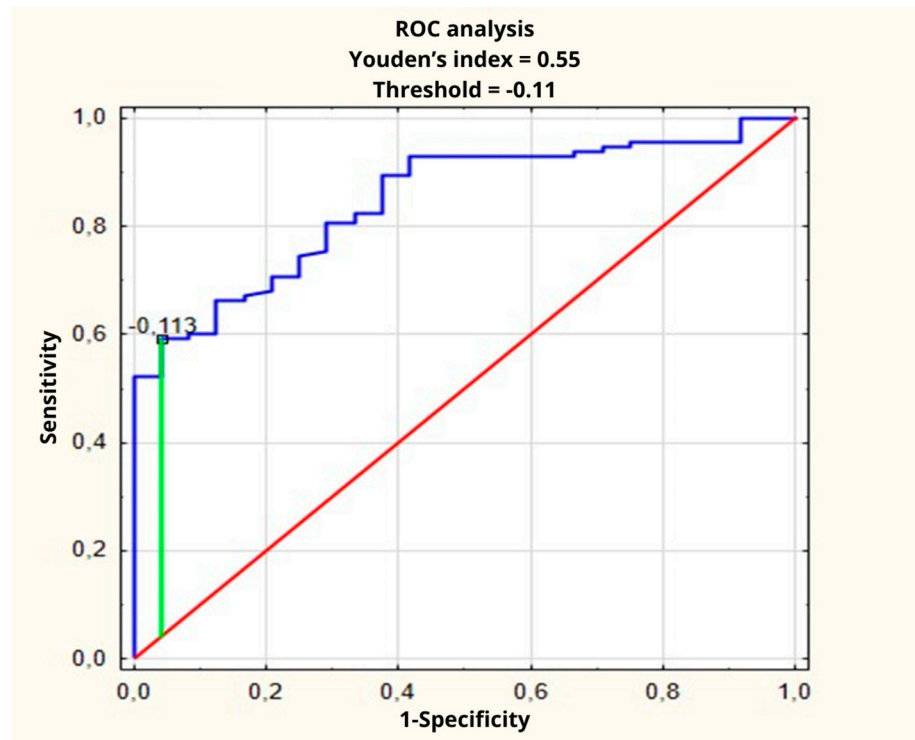


Figure S2. The survival analysis of patients with colon adenocarcinoma at various clinical stages. The Kaplan-Meier test was used to perform the survival analysis. Clinical stages (A, B, C, D) were assessed according to the Dukes classification. p: statistical significance.



**Figure S3.** The survival analysis of patients with colon adenocarcinoma in different locations. The Kaplan-Meier test was used to perform the survival analysis. p: statistical significance.



**Figure S4.** The receiver operating characteristic (ROC) curve used to determine the threshold for the combination of three parameters: leukocytic elastase, antitrypsin activity, and total sialic acid.