

Figure S1. Example of 76Gy isodose for automated (upper) and manual treatment plans for whole-pelvic localization (Patient n° 5).

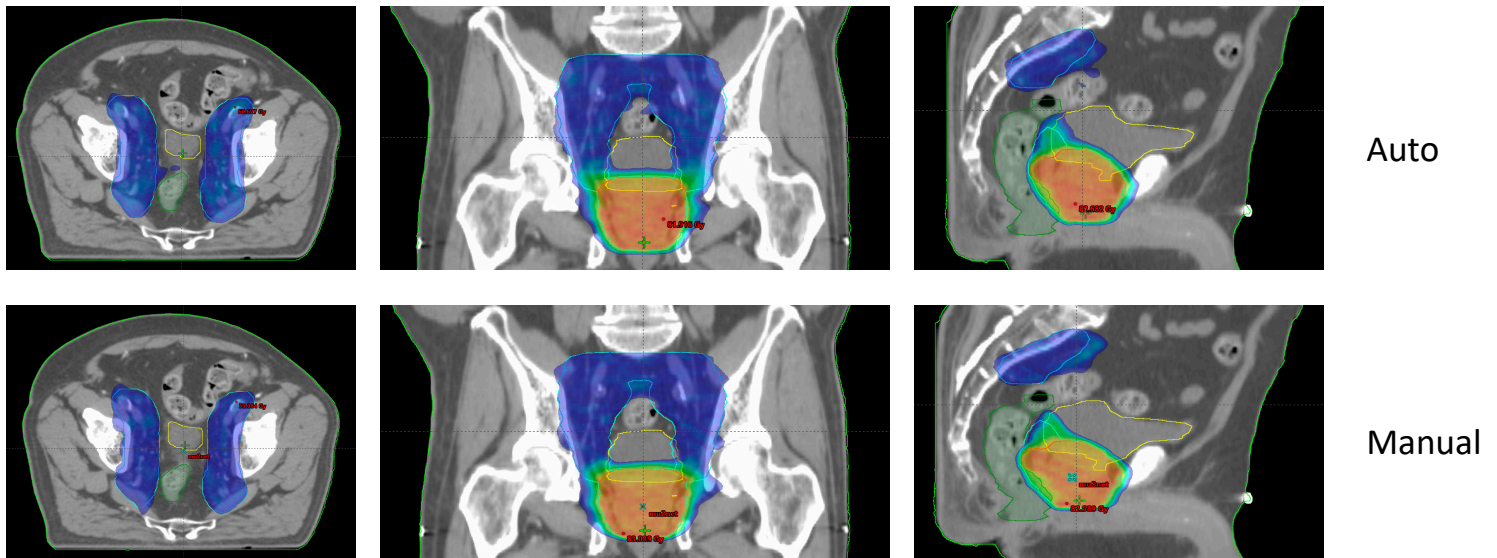


Figure S2. Example of 53.2Gy isodose for automated (upper) and manual (lower) treatment plans for whole-pelvic localization (Patient n° 5).

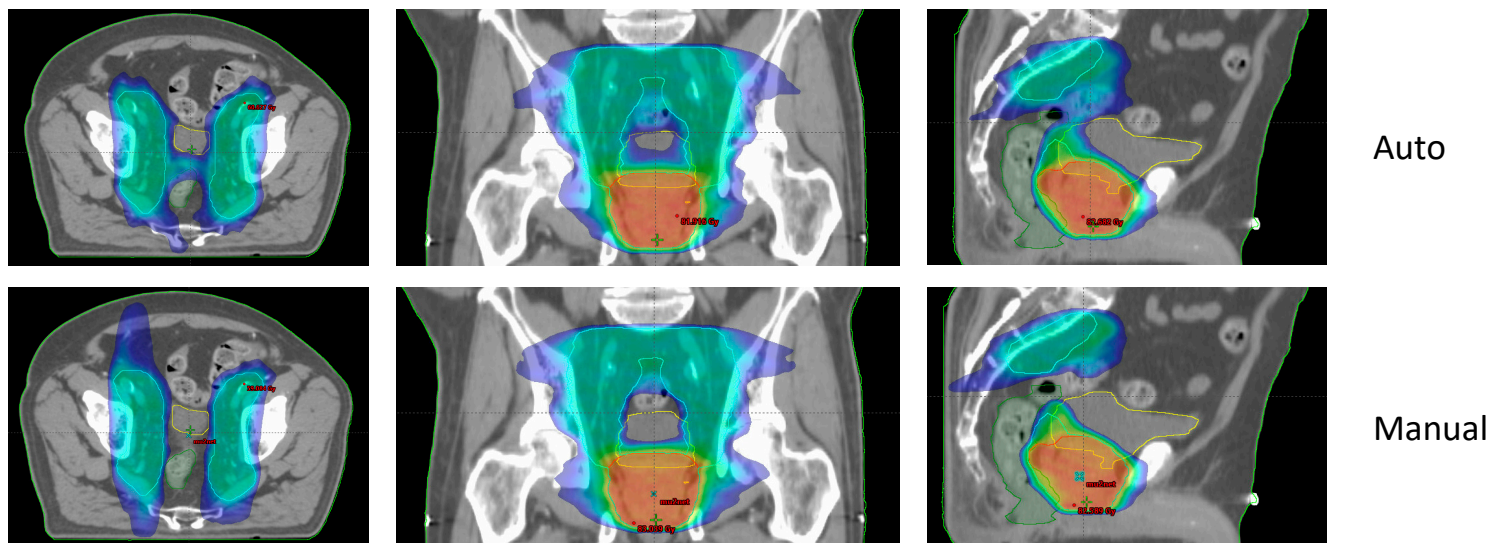


Figure S3. Example of 40Gy isodose for automated (upper) and manual (lower) treatment plans for whole-pelvic localization (Patient n° 5).