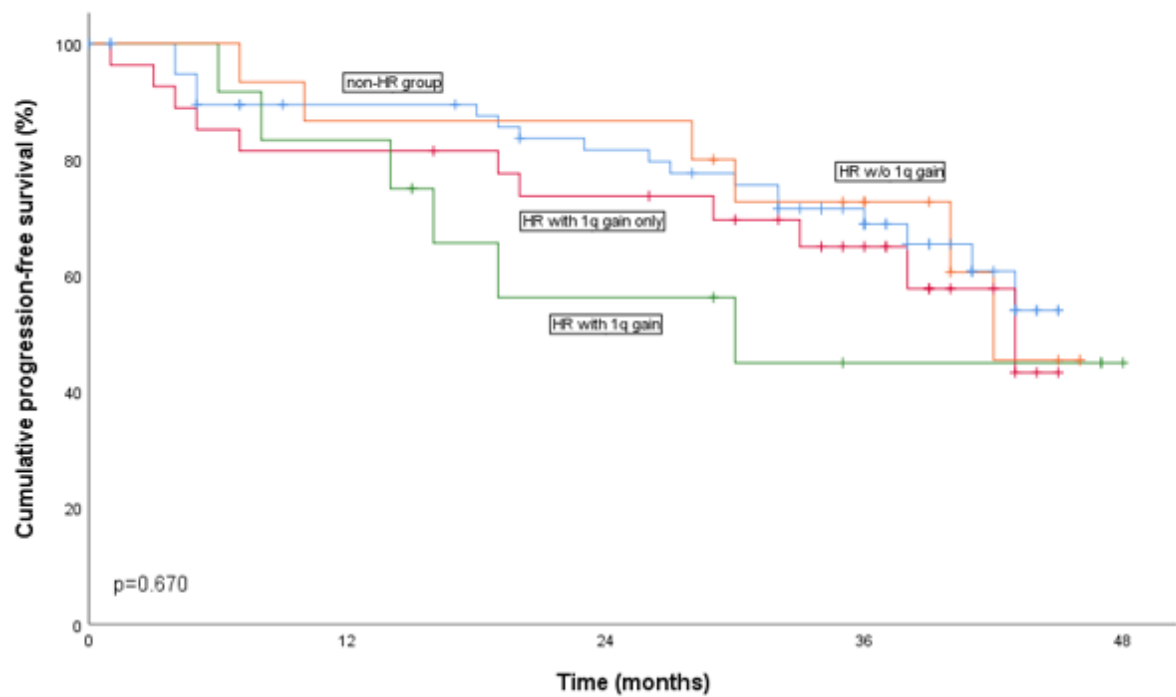


Supplement figure S1. Progression-free survival according to detailed risk groups (ITT)

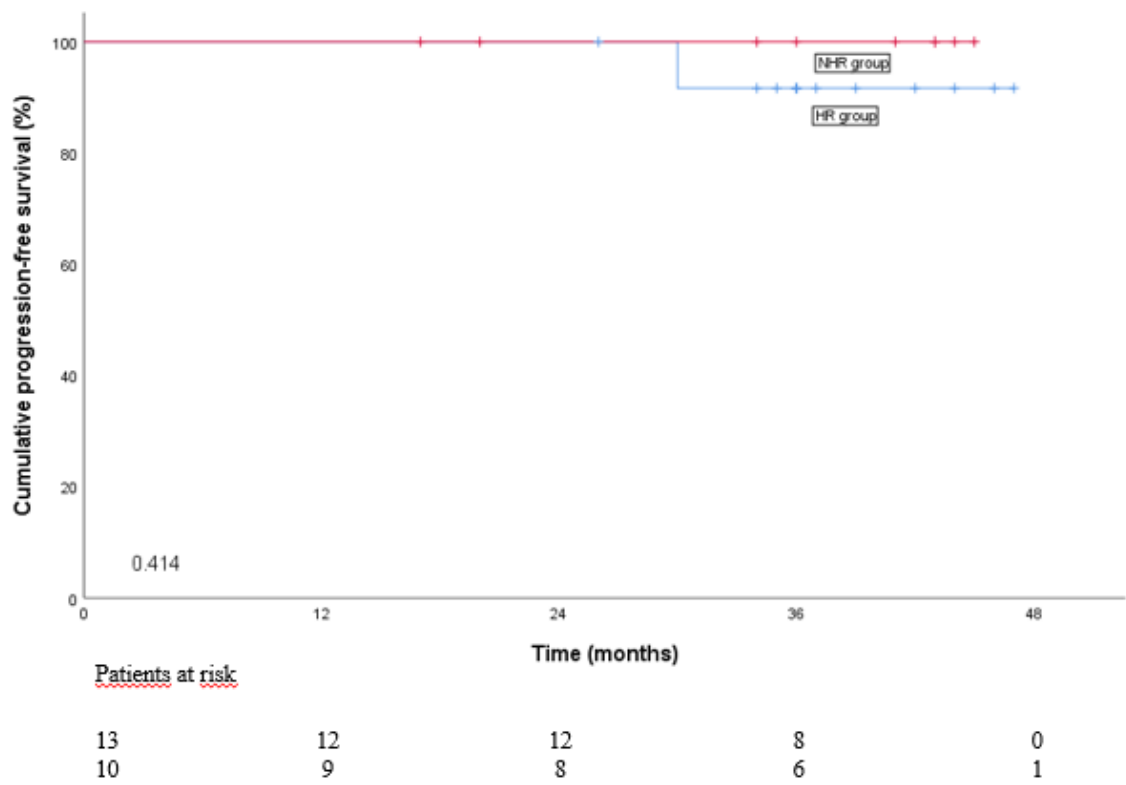


Patients at risk

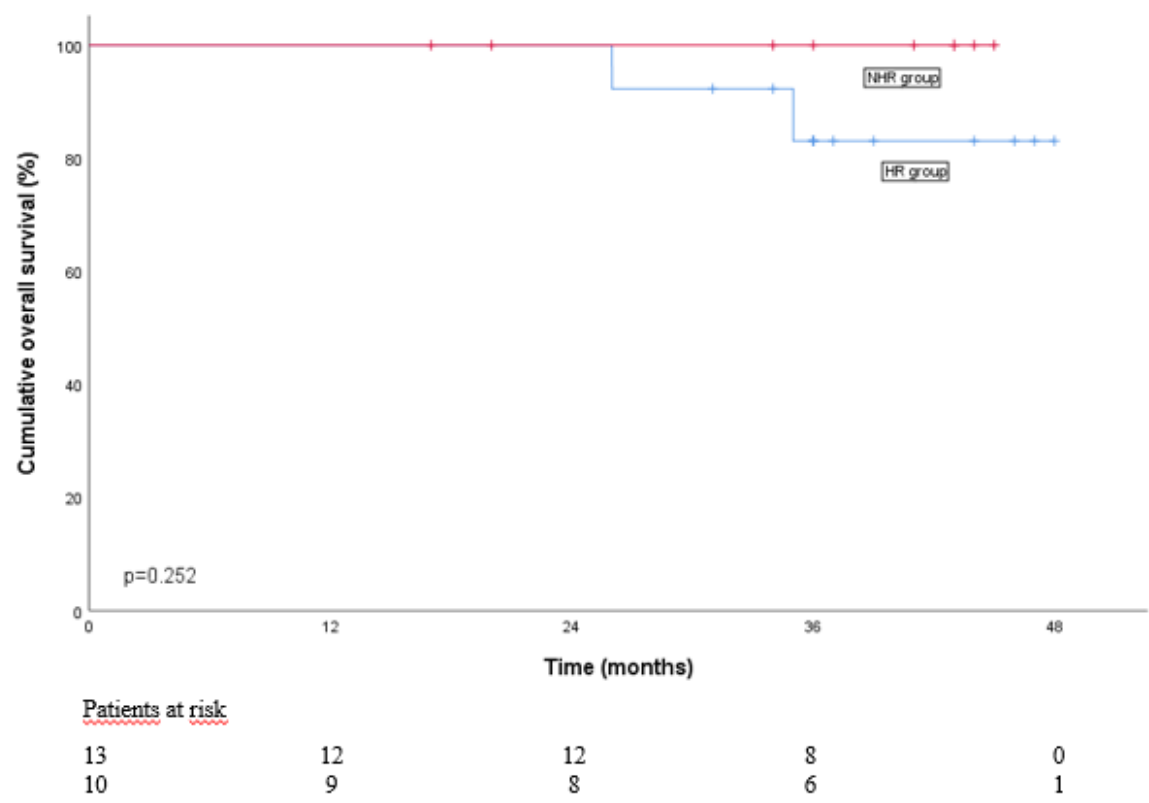
62	47	41	26	0
29	22	19	11	0
11	10	6	3	0
14	13	12	7	0

Supplement figure S2. Progression-free survival a) and overall survival b) in myeloma patients with sustained undetectable MRD <10⁻⁵

a.



b.



Supplement Table S1. Mobilization and collection data of 108 myeloma patients according to the risk groups			
Variable	HR group n=54 (%)	NHR group n=54 (%)	Significance <i>p</i>
Mobilization type			0.272
CY+FIL	37 (68)	43 (80)	
CY+PEG	1 (2)		
FIL alone	16 (30)	11 (20)	
PLER use	20 (35)	14 (22)	0.270
Peak blood CD34⁺ cell count (x 10⁶/L), median (range)	42 (13-106)	77 (16-212)	0.045
Total collected CD34⁺ cell yield † (x 10⁶/kg), median (range)	5.6 (0.2-19.2)	6.8 (1.8-15.9)	0.119
Number of apheresis			0.389
1	23 (43)	23 (43)	
2	19 (35)	24 (44)	
3	6 (11)	4 (7)	
4	5 (9)	1 (2)	
Abbreviations: CY+FIL=cyclophosphamide+filgrastim; CY+PEG=cyclophosphamide+pegfilgrastim; FIL=filgrastim;PLER=plerixafor; HR=high risk † four mobilization failures			

Supplement Table S2. Associations of different variables with PFS in 120 patients with myeloma

Variable	Exp (B)	95% CI	<i>p</i>
Gender			
Male	1		
Female	1.648	0.899-3.022	0.106
Age			
≤65	1		
>65	1.464	0.756-2.833	0.258
ECOG			
0	1		
1	1.076	0.561-2.063	0.826
2	1.150	0.391-3.383	0.799
IMWG risk group			
low	1		
standard	2.384	0.842-6.749	0.102
high	1.654	0.464-5.895	0.437
R-ISS			
1	1		
2	2.656	1.163-6.065	0.020
3	7.279	2.415-21.940	< 0.001
Cytogenetic risk group			
HR	1		
NHR	0.770	0.419-1.415	0.400
Best serological response			
sCR	1		
CR	0.933	0.503-1.733	0.827
VGPR	0.854	0.452-1.614	0.628
PR	1.328	0.608-2.899	0.477
Flow-MRD 10⁻⁴			
sustained undetectable	1		
turned positive	40.382	5.039-323.625	< 0.001
positive	28.167	3.843-206.453	0.001
undetectable once			0.981
Flow-MRD 10⁻⁵			
sustained undetectable	1		
turned positive	11.106	1.300-95.571	0.028
positive	16.495	2.256-120.596	0.006
undetectable once			0.982